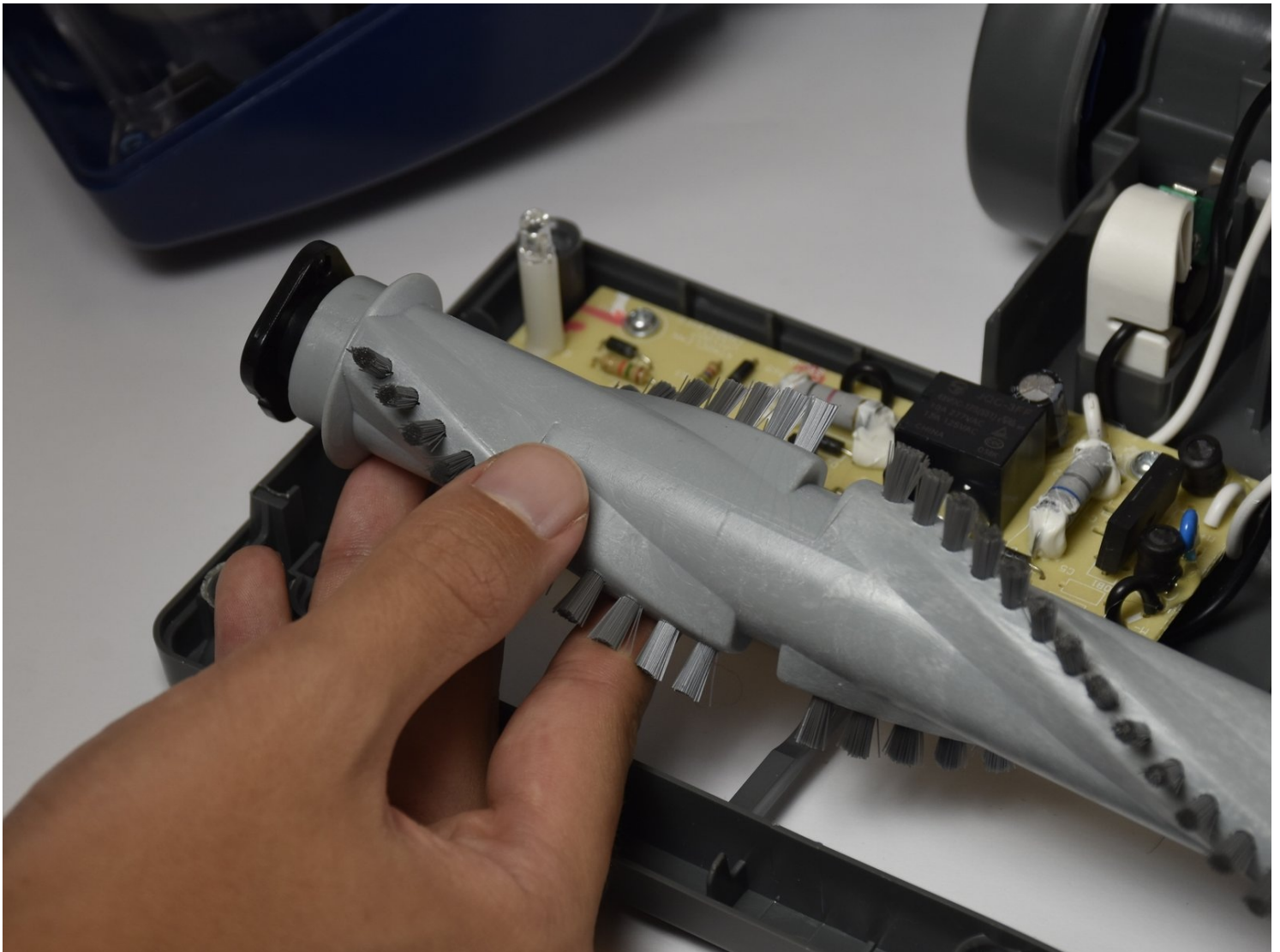




# Shark Navigator Lift-Away Deluxe NV360 Roller Brush Replacement

Replacing the roller brush can help improve the...

Written By: Elena Postupalskaya



# INTRODUCTION

Replacing the roller brush can help improve the suction and movement of the vacuum.

## TOOLS:

[Metal Spudger](#) (1)  
[Phillips #1 Screwdriver](#) (1)  
[iFixit Opening Tool](#) (1)

## PARTS:

[Shark Navigator Lift-Away Deluxe NV360 Roller Brush](#) (1)

### Step 1 — Roller Brush Belt



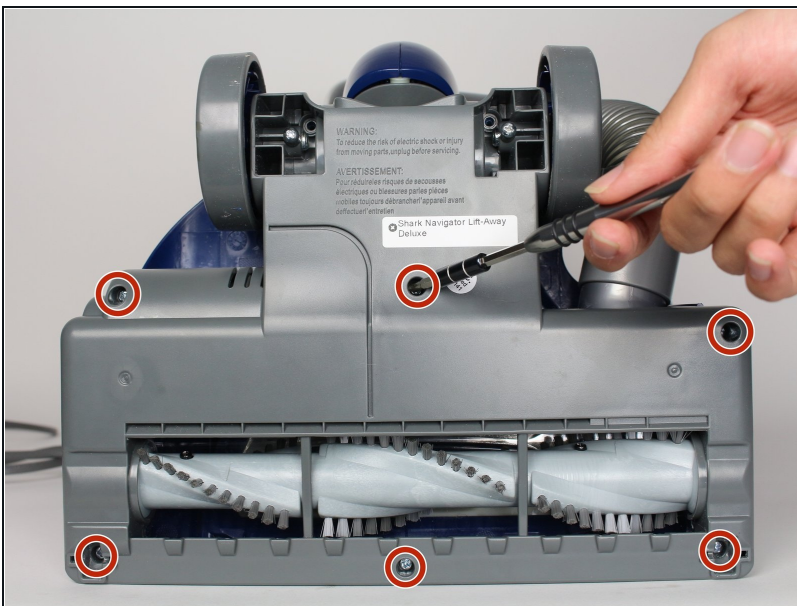
- Lay the vacuum down by hand and locate the roller brush underneath the vacuum cleaner.

## Step 2



- Insert the metal spudger between the inside side of the wheel and the plastic body.
- Push the metal spudger away from you to pop the wheels out.
- Repeat the step to remove the other wheel on the other side.

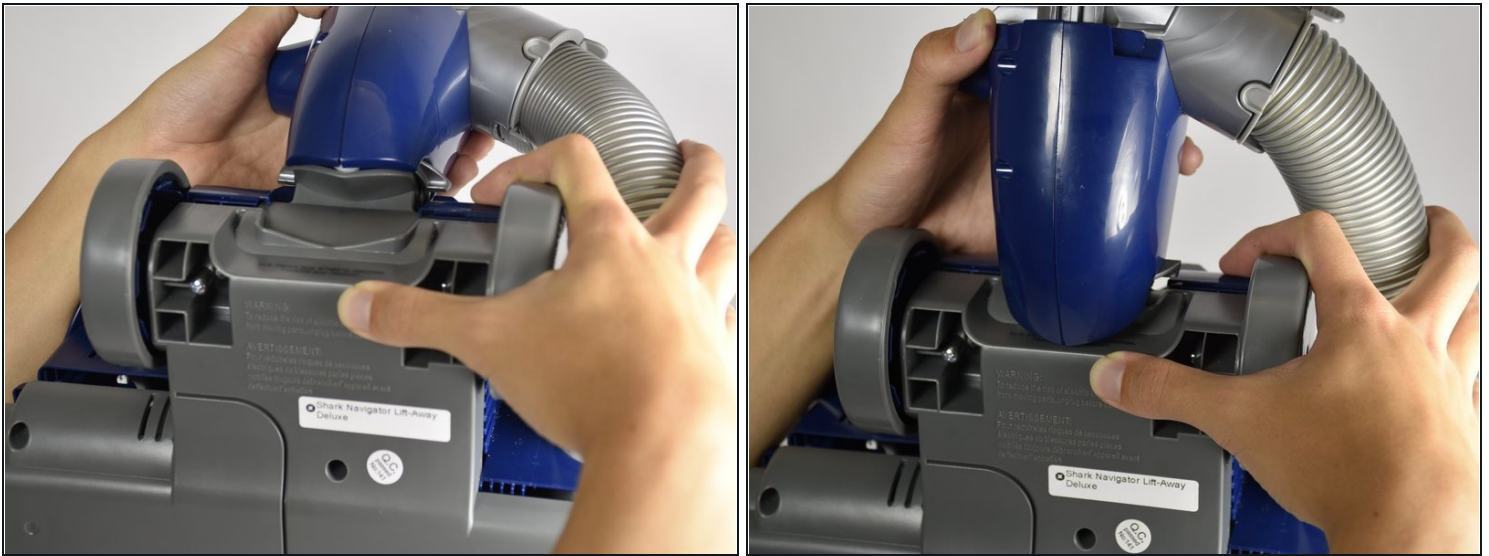
## Step 3



- Remove the six 15mm screws using the PH1 screwdriver.



## Step 4



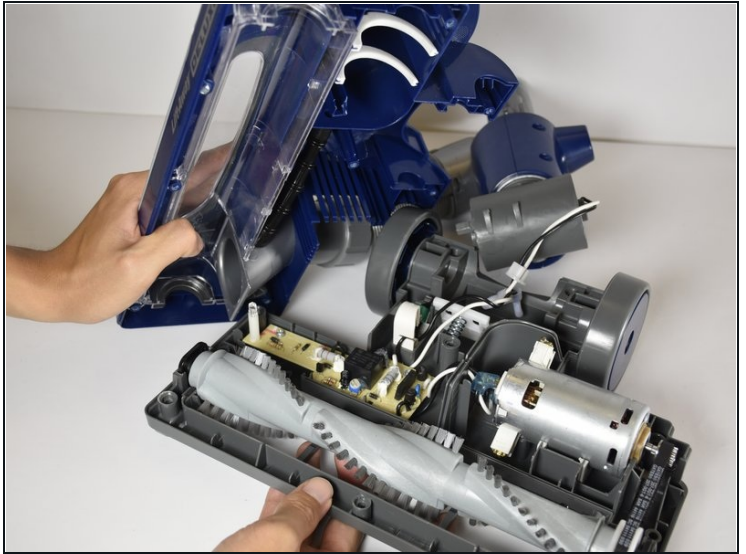
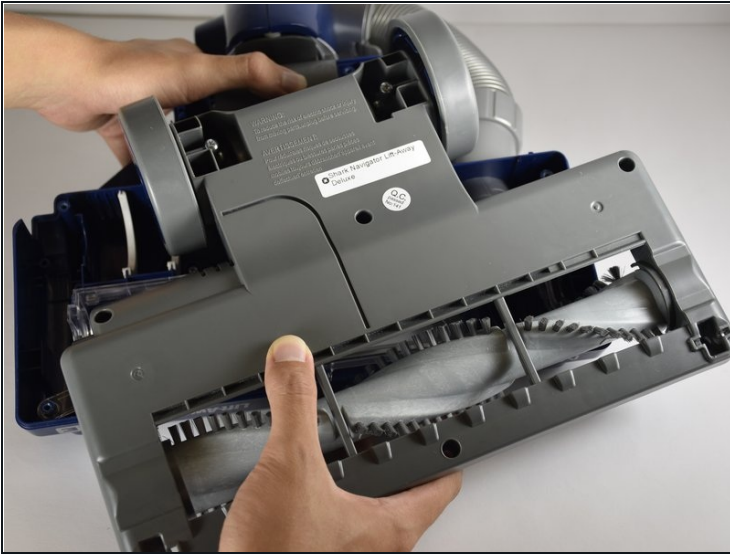
- Move the blue fulcrum connecting the bottom and the main body of the vacuum cleaner back and forth to loosen up crevice between the two halves of the roller brush enclosure.

## Step 5



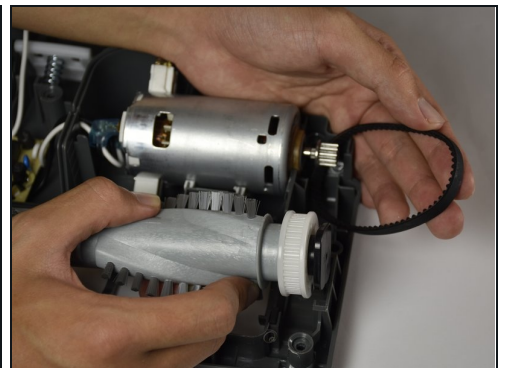
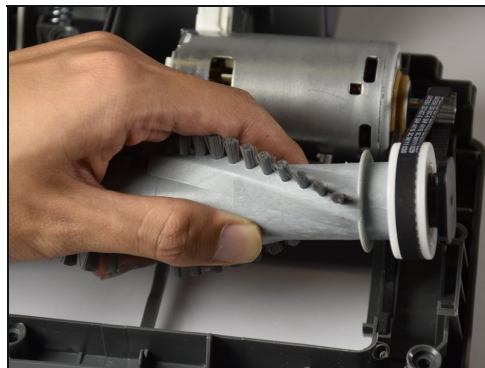
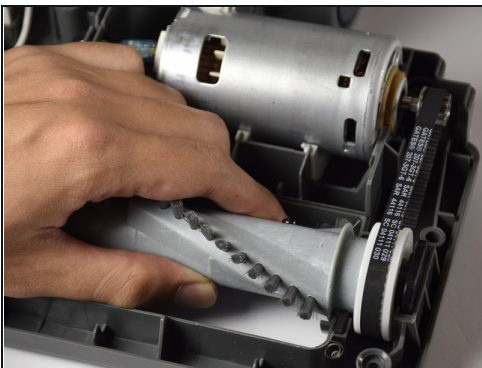
- Insert the plastic opening tool into the crevice between the blue and the dark grey plastic frames enclosing the roller brush.
- Apply an outward force throughout and all around the gap in order to separate the two plastic frames.

## Step 6



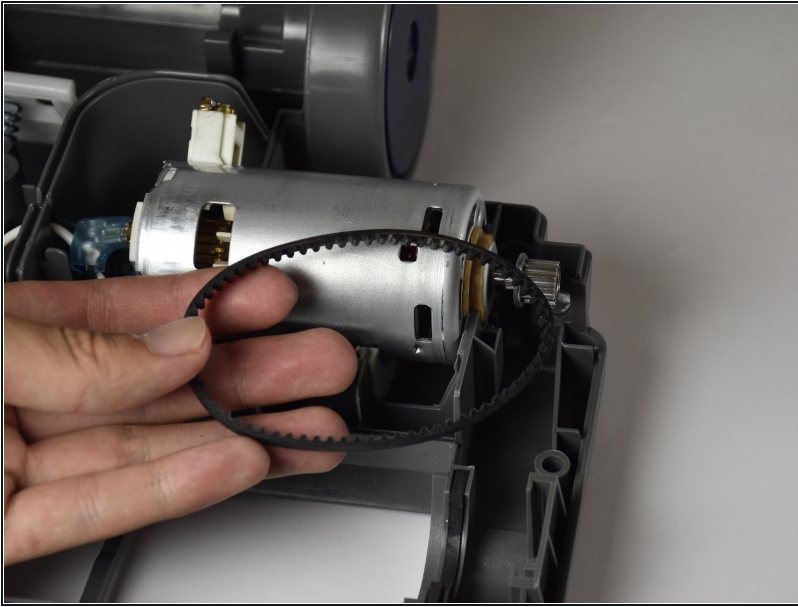
- Lift the grey frame off the bottom of the vacuum cleaner with your hands and place it on a flat surface.

## Step 7



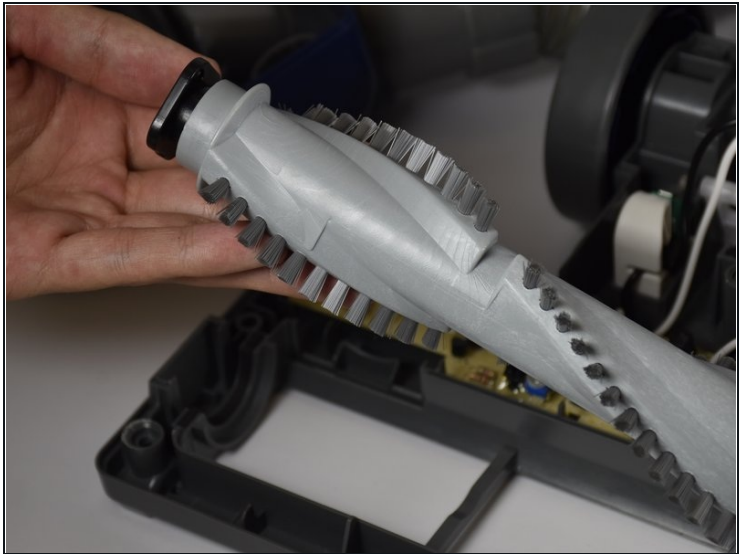
- Lift the roller brush slightly upwards using your hand.
- Take one side of the black roller brush belt off by pulling it over the end of the roller brush with your other hand.

## Step 8



- Remove the roller brush belt with your hands by sliding it off the end of the motor.

## Step 9 — Roller Brush



- Remove the roller brush from the plastic frame using your hands by lifting it away.

To reassemble your device, follow these instructions in reverse order.