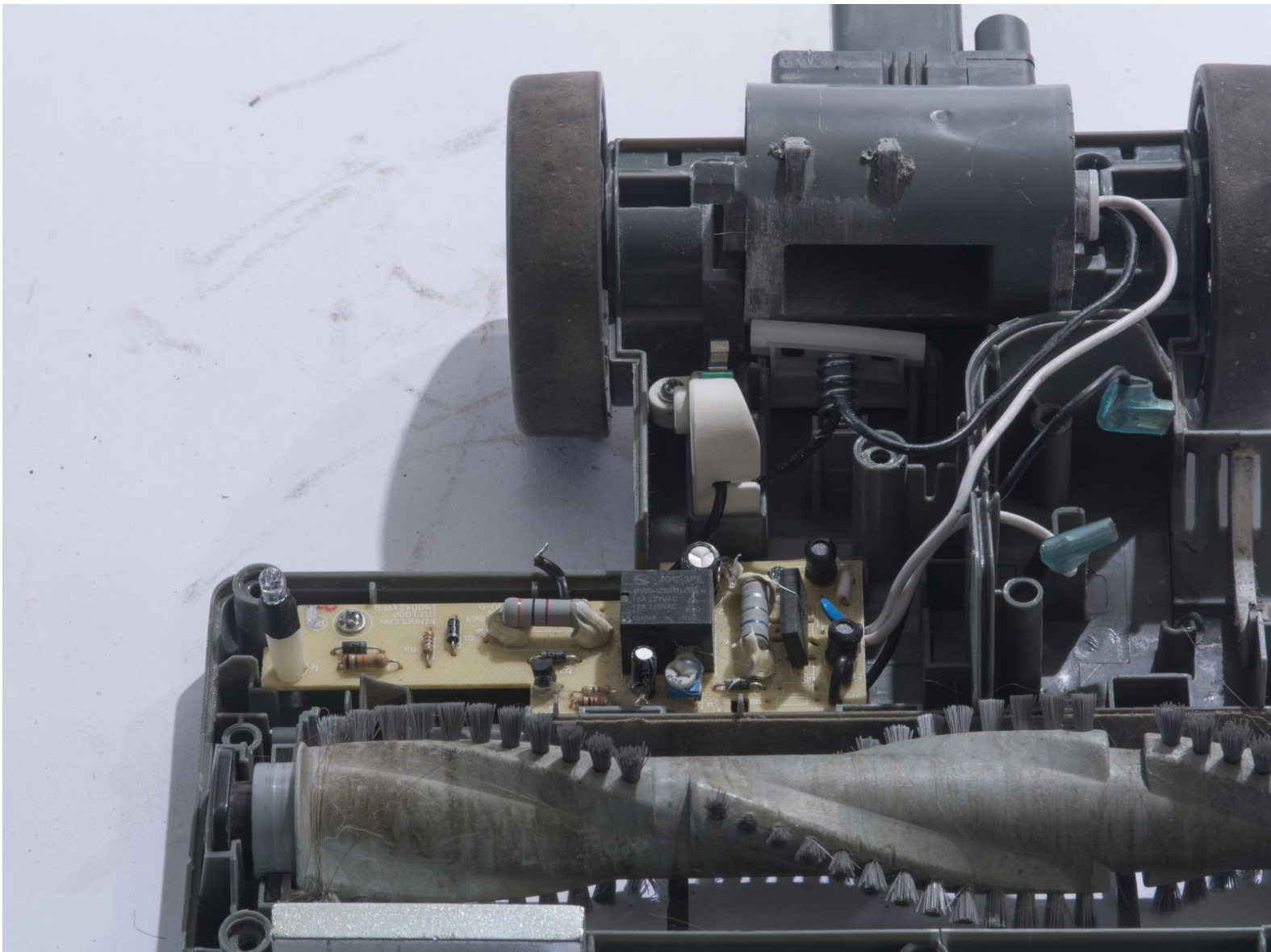




# Shark Navigator Lightweight Upright Motherboard Replacement

This guide will show you how to safely access and replace your Shark Navigator Lightweight Upright vacuum's motherboard.

Written By: Suzie



# INTRODUCTION

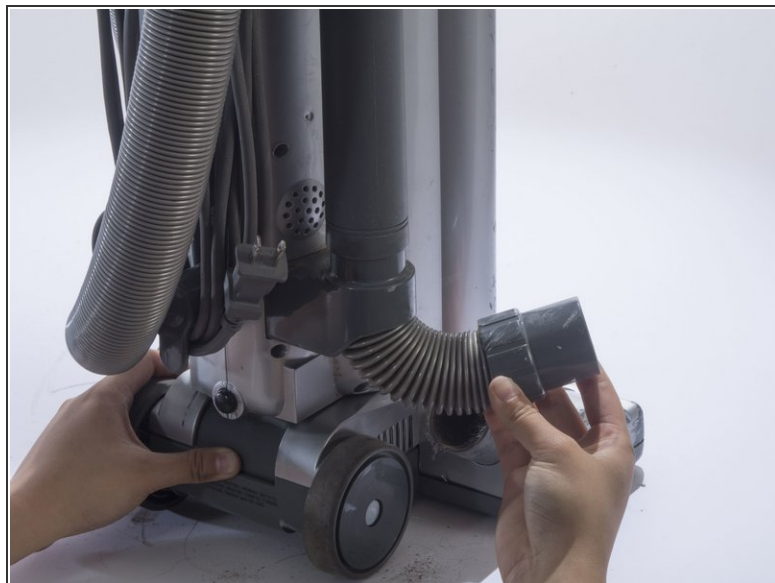
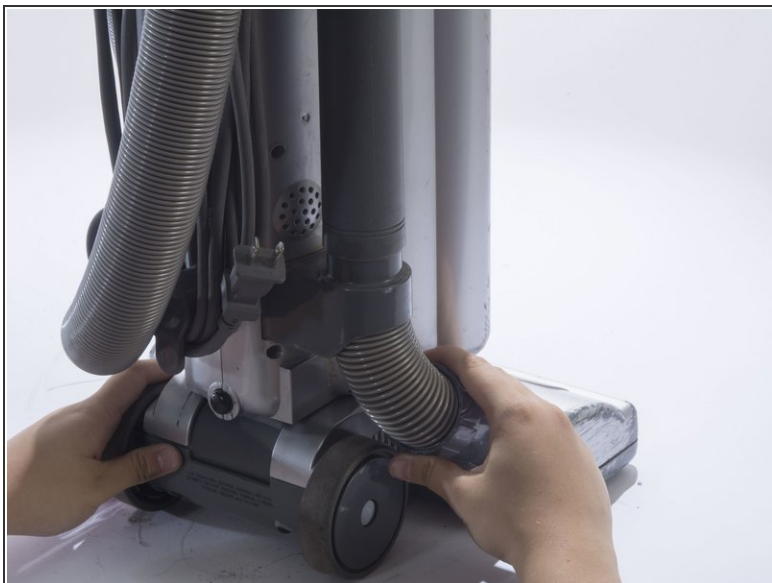
The motherboard is the command center for the vacuum's functions. Sometimes components on the board will come loose and require replacement. This guide will show you the steps necessary to replace the motherboard.



## TOOLS:

- [iFixit Opening Tools](#) (1)
  - [Metal Spudger](#) (1)
  - [Soldering Iron](#) (1)
  - [Tweezers](#) (1)
  - [JIS #1](#) (1)
-

## Step 1 — Head Shell



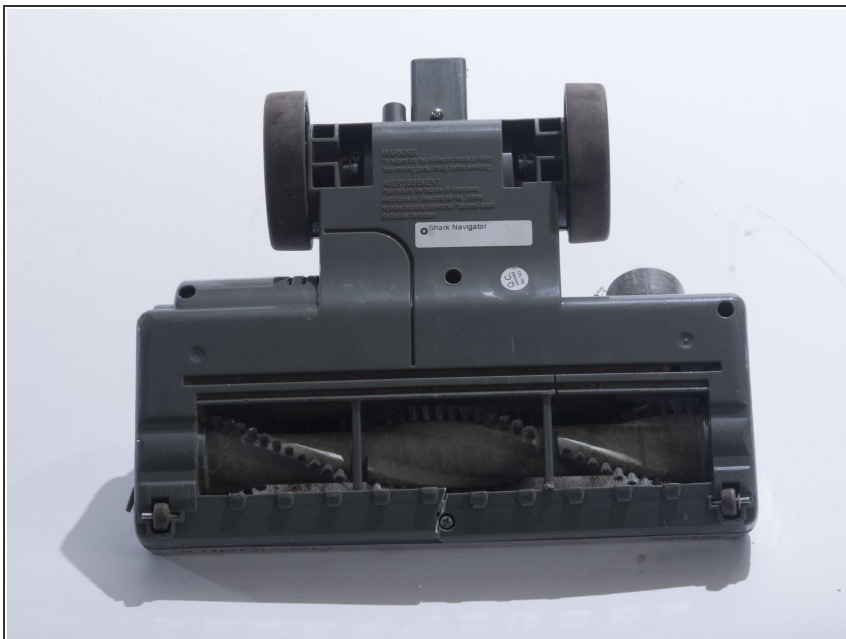
- Detach the hose connected on the bottom of the vacuum by pulling it out of the casing.

## Step 2



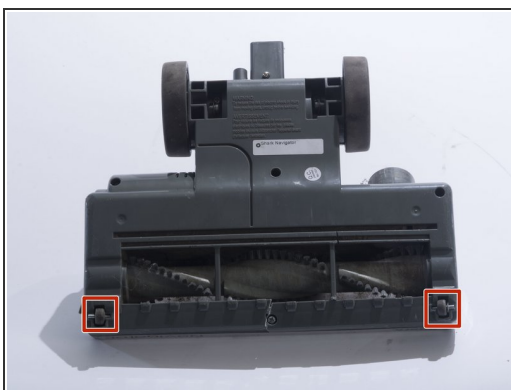
- Lay the vacuum on its side.
- Press in the black, rubberish button located on the back of the vacuum to detach the vacuum head from the body.

### Step 3



- Flip over the vacuum head so the brush head is facing up.

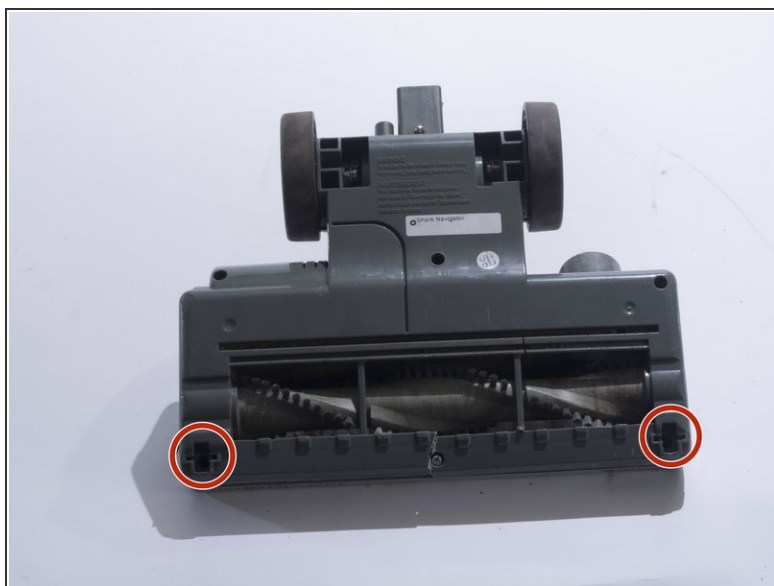
### Step 4



- Remove the small front wheels with a metal spudger by inserting the metal spudger in front of the wheel and slowly prying up. This will free the wheel and reveal the screw beneath it.
- Repeat this for the other wheel.

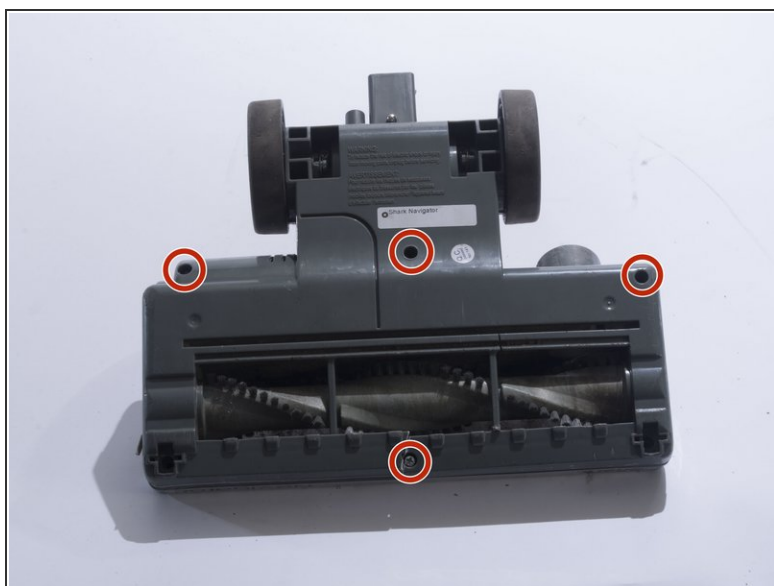


## Step 5



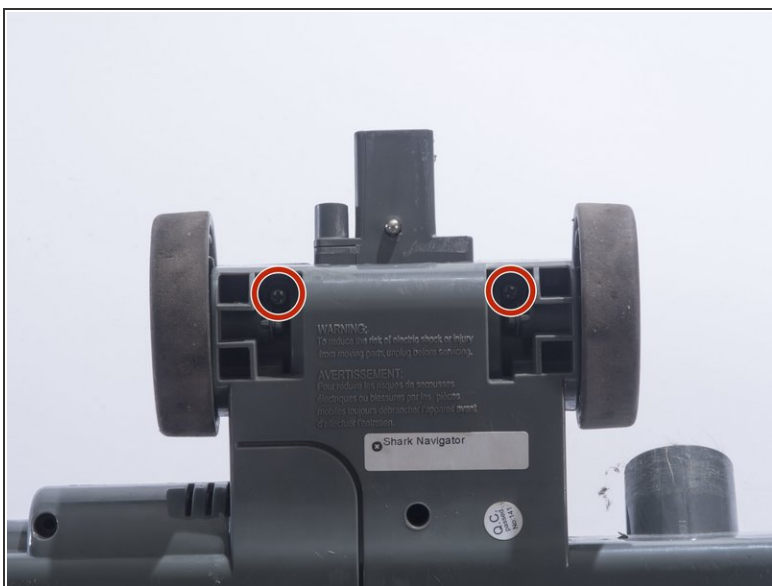
- Remove the two 18mm screws with a JIS 1 screwdriver.

## Step 6



- Remove the four 18mm screws located on the top corners and the bottom/middle of the vacuum head using a JIS 1 screwdriver.

## Step 7



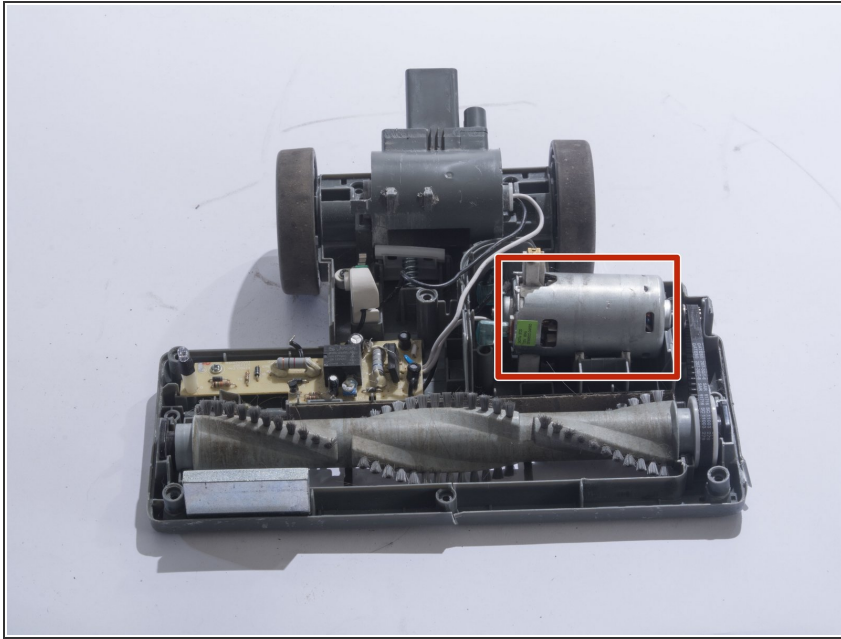
- Remove the two 18mm screws located on the inside of the large wheels using a JIS 1 screwdriver.

## Step 8



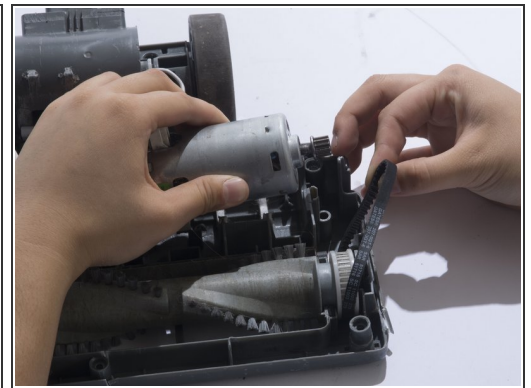
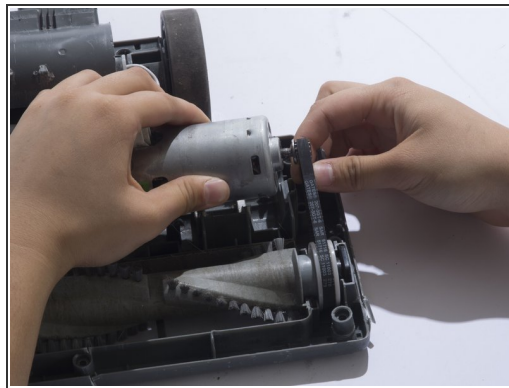
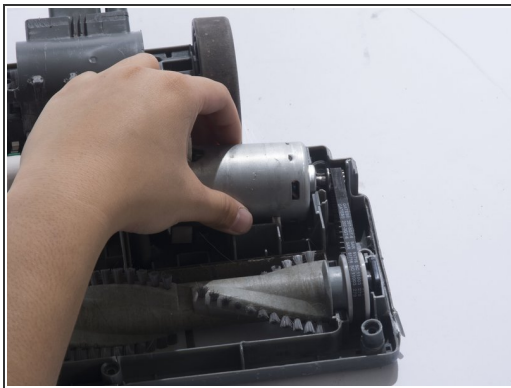
- Remove the plastic cover by prying the plastic cover up using a plastic opening tool.
- ⓘ Prying in multiple locations may be necessary to create separation.

## Step 9 — Motor



- Locate the motor on the top right corner of the vacuum head shell.

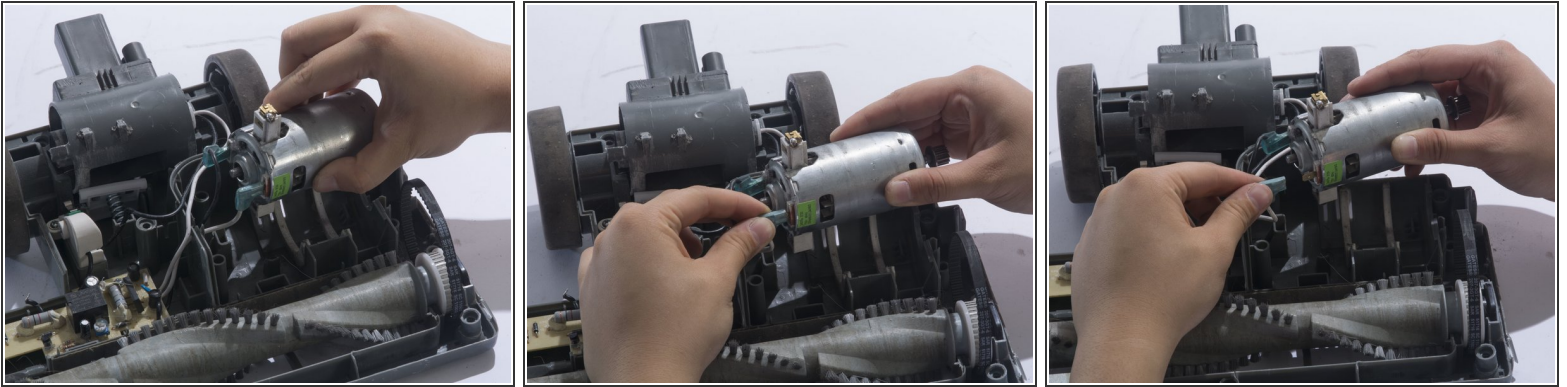
## Step 10



- Remove the belt from the motor gear by sliding the belt to the right.



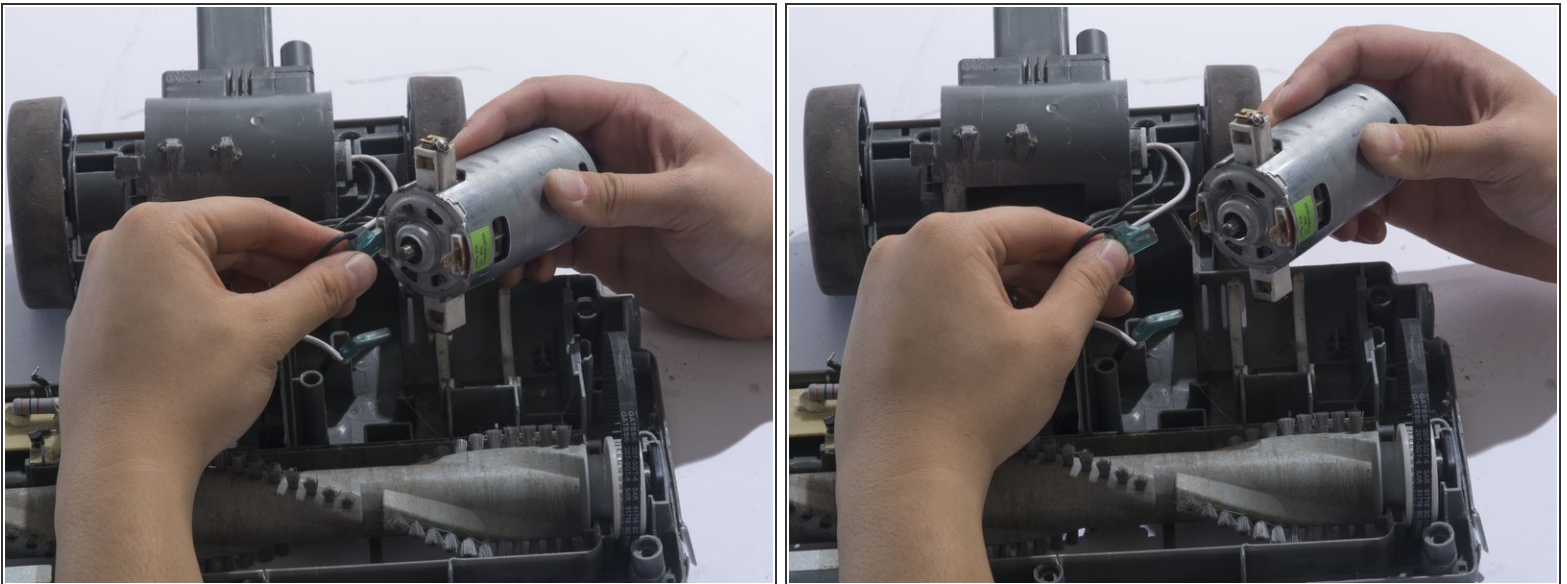
## Step 11



- Remove the white metal wire connector from the motor.

**i** The white cable is positive.

## Step 12

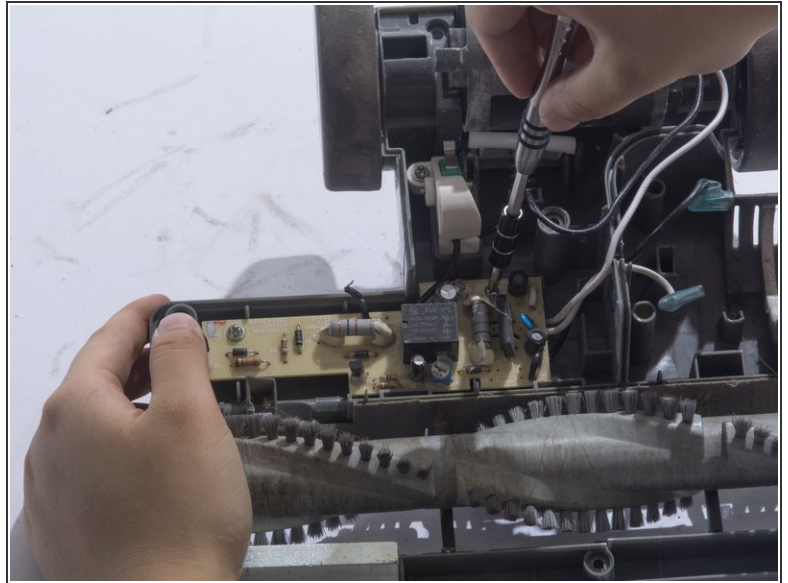
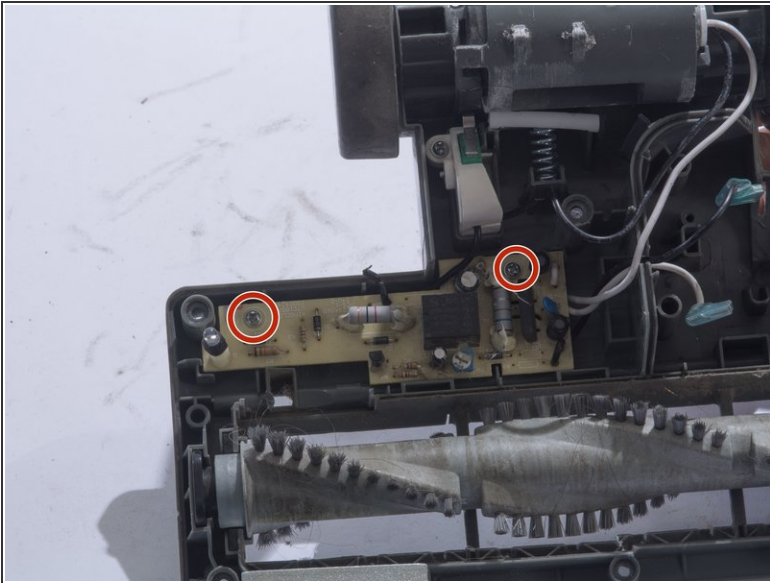


- Remove the black metal wire connector from the motor.

**i** The black cable is negative.

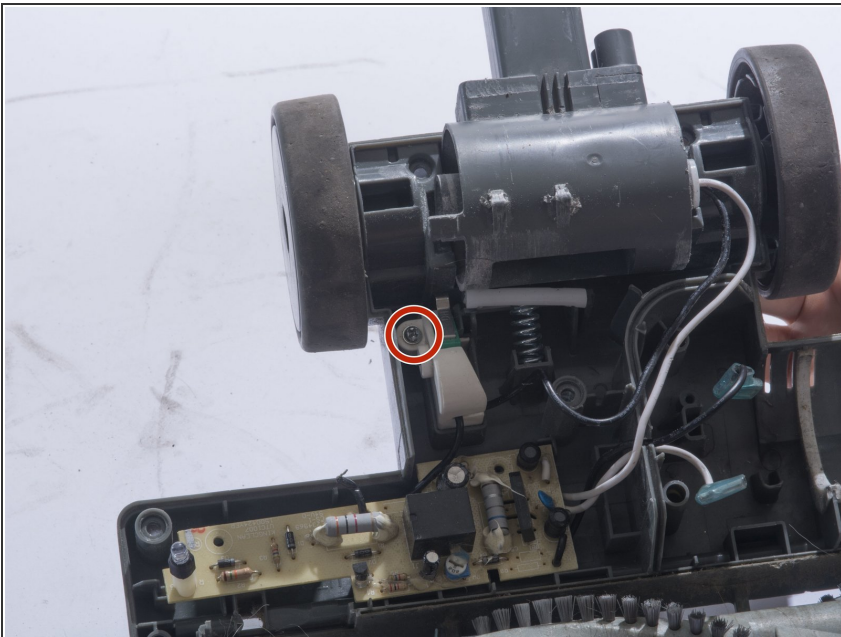


## Step 13 — Motherboard



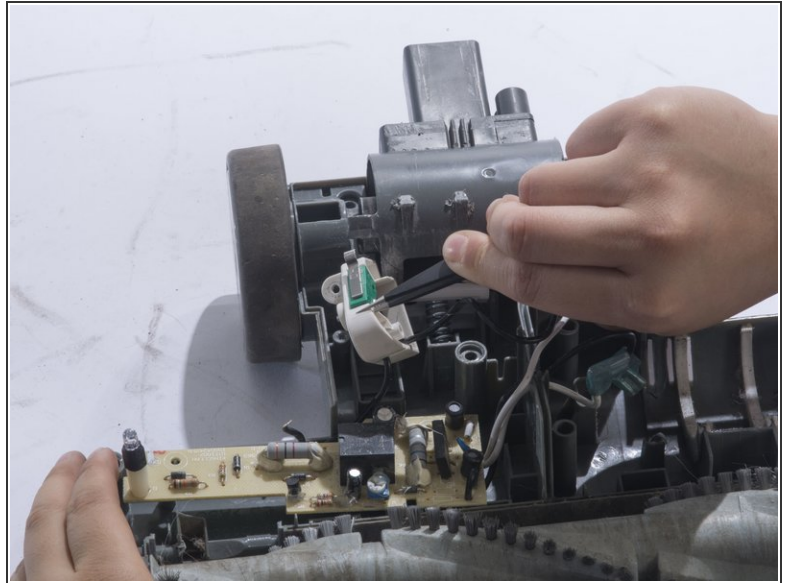
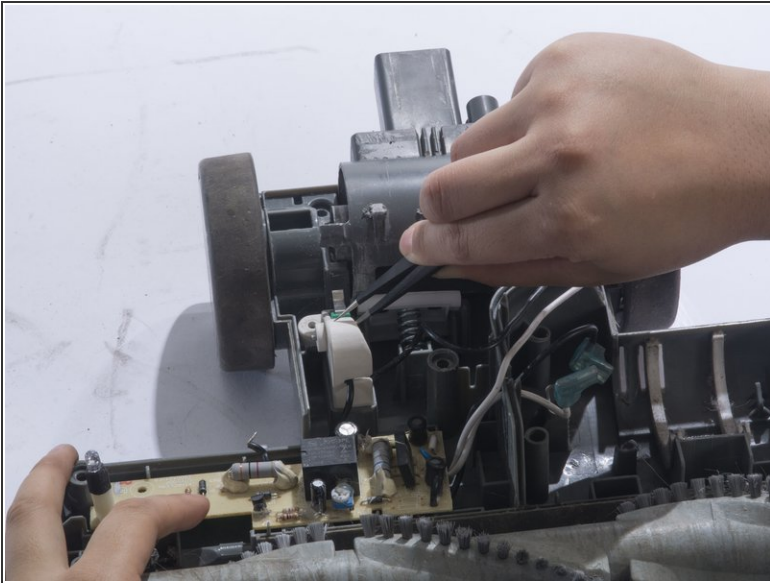
- Remove the two 12mm screws using a JIS 1 screwdriver.

## Step 14



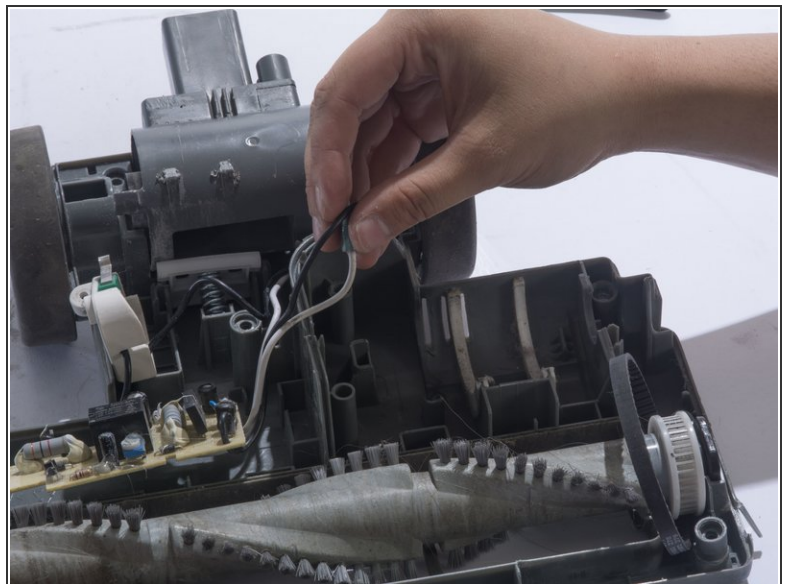
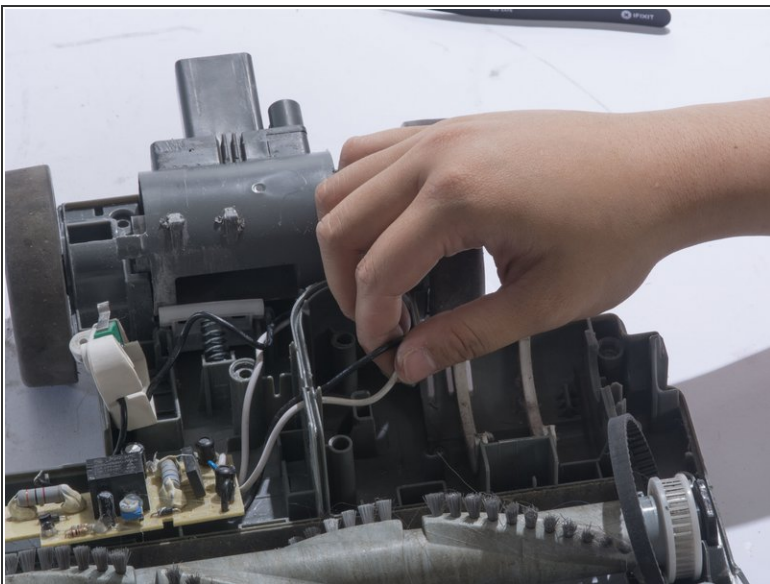
- Remove the wire housing by removing one 12mm screw using a JIS 1 screwdriver.

## Step 15



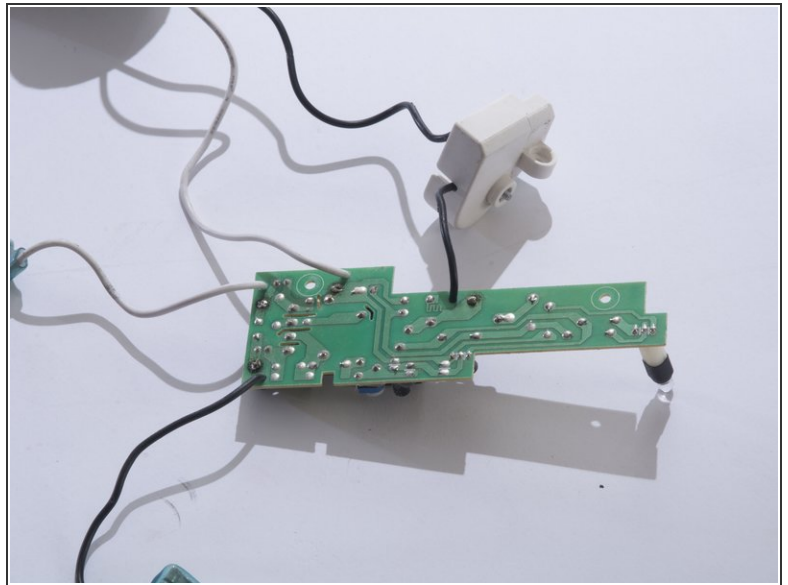
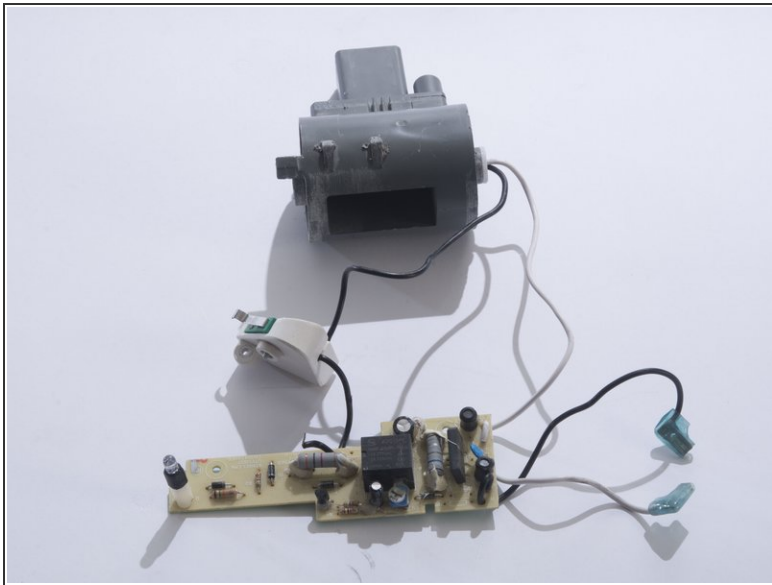
- Lift up the wire housing from the plastic base using tweezers.

## Step 16



- Free the black and white cables that were previously attached to the motor from their slot.

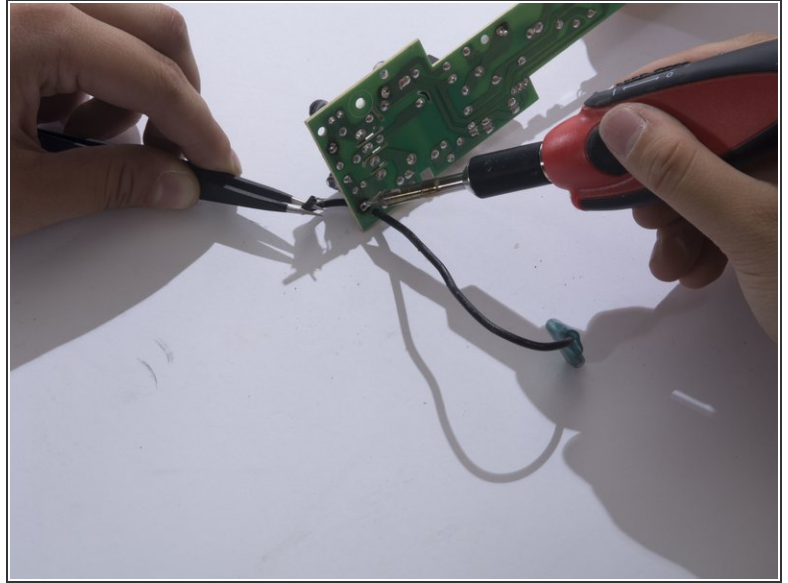
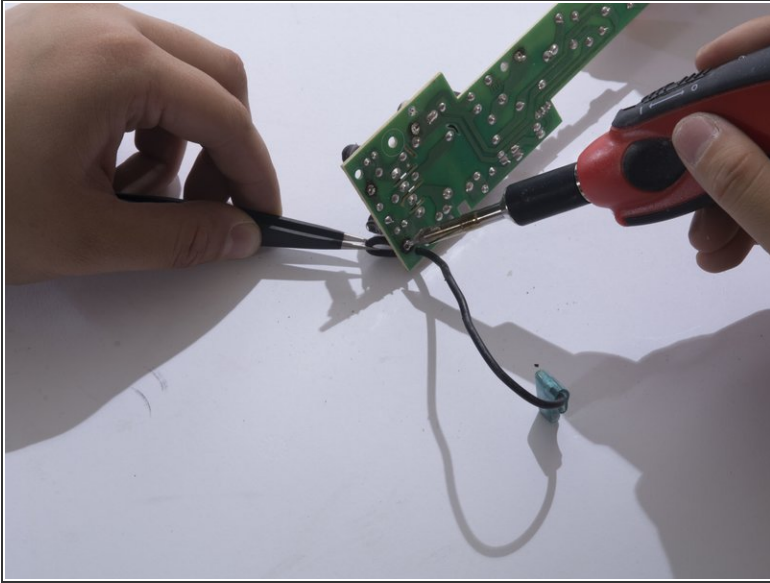
## Step 17



- Free the motherboard and its connecting parts from the rest of the vacuum.
- Turn the motherboard upside-down and spread wires out.

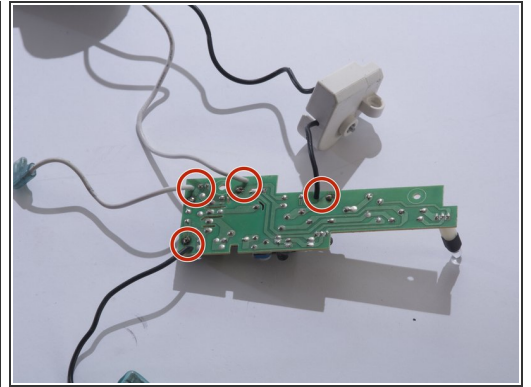
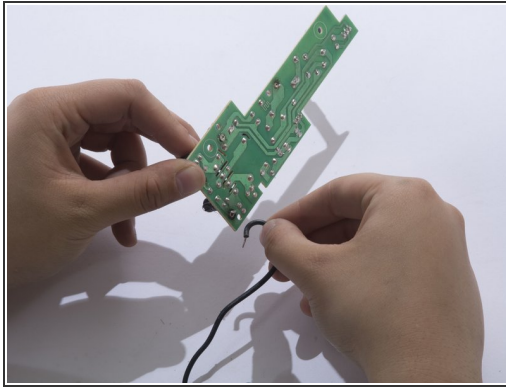
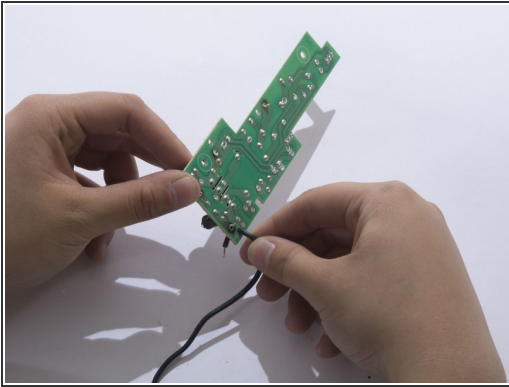


## Step 18



- Heat the wire connection's solder joint until the joint looks wet and liquidy.
- While maintaining contact with the solder iron, free the wire end by pulling the wire away from the board with the tweezers.
- i For instructions on how to solder properly please refer to this soldering technique guide. [How To Solder and Desolder Connections](#)
- i Remember which cables were soldered onto where. You will have to re-solder the cables back onto the same joint.
- ! Solder iron is extremely hot and should be handled with care. Always wear eye protection when soldering.

## Step 19



- Completely free the cable by pulling it out of the board.
- Repeat for the remaining cables. There are 4 total.

To reassemble your device, follow these instructions in reverse order.