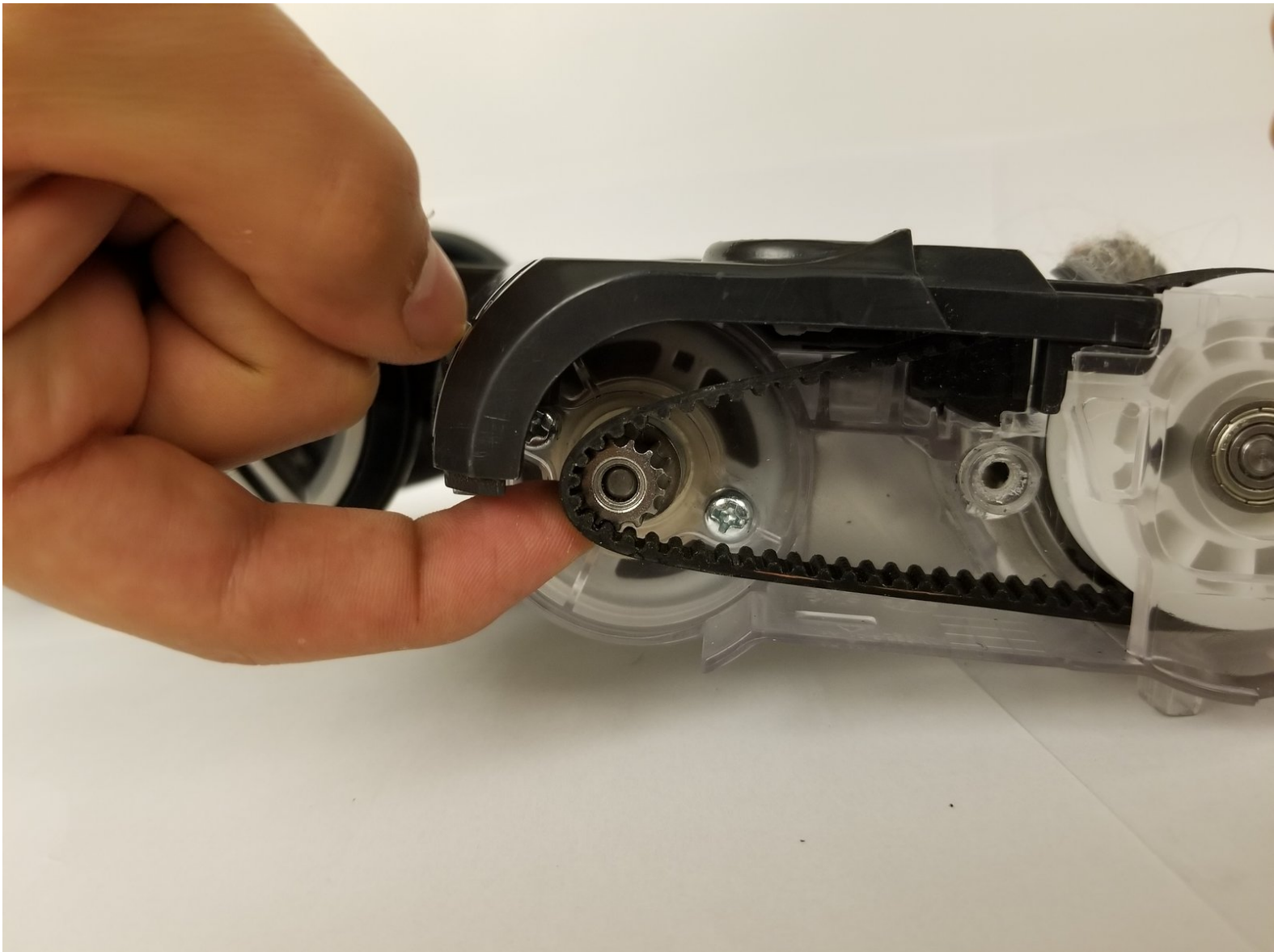




Shark Rotator Powered Lift-Away Brush Belt Replacement

If the brush does not spin and the motor still ...

Written By: Cameron Ngai



INTRODUCTION

If the brush does not spin and the motor still works, then the brush belt may be worn down or damaged.

This guide will aid in replacing that belt.



TOOLS:

- [64 Bit Driver Kit](#) (1)

you will need the Phillips, Flathead, and Torx drivers for the disassembly.

- [Metal Spudger](#) (1)
 - [Phillips #1 Screwdriver](#) (1)
 - [TR10 Torx Security Screwdriver](#) (1)
-

Step 1 — Shark Rotator Powered Lift-Away Head Nozzle Disassembly



- Push the lift away button and pull the handle up to separate the body from the wand section.

Step 2



- Push lift away button on the wand then lift up on the top section to separate.

Step 3



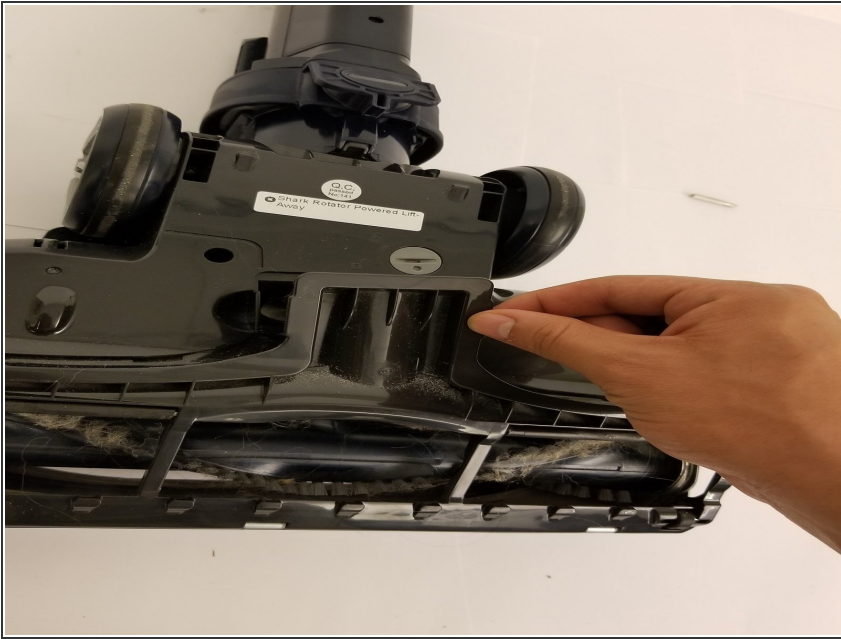
- Tilt the wand shaft backwards for convenient.

Step 4



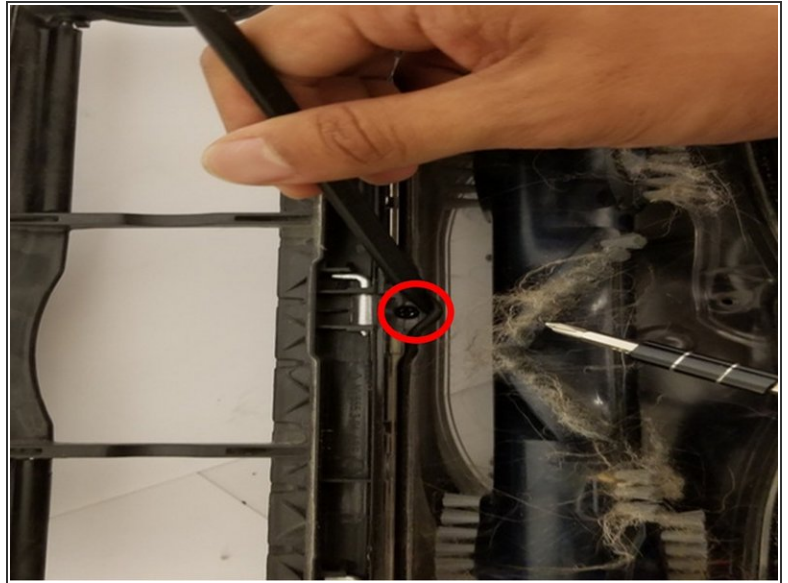
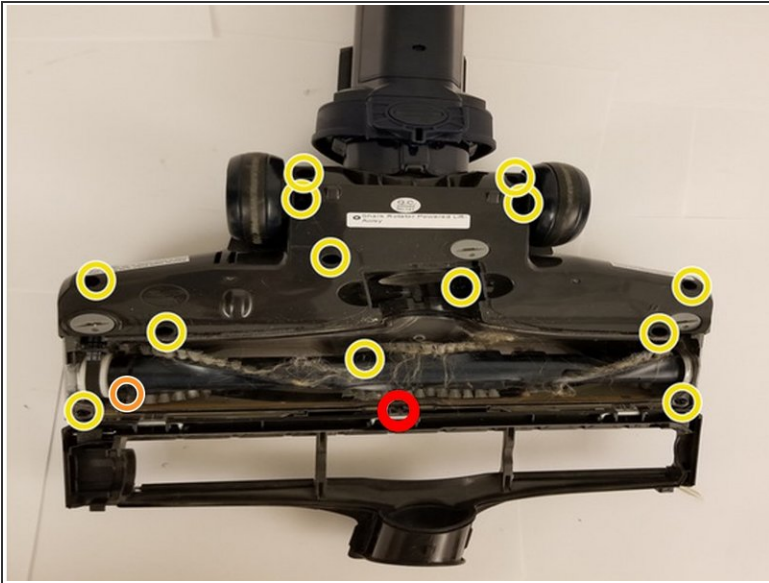
- Lay the head nozzle piece upside down.
- Rotate the three gray taps to the unlock position.

Step 5



- With your fingers, pry and pull the brush cage open.

Step 6



- Remove the 13 screws (circled in yellow) using a phillips screwdriver.

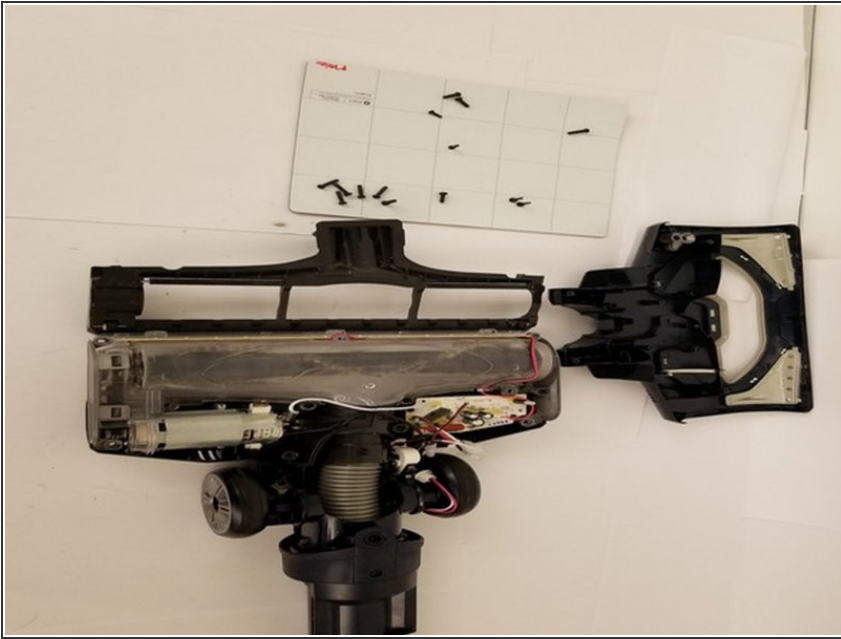
⚠ Be sure to keep track of which screws go into which hole.

- Remove the one screw (circled in red) that has a Torx head (might be Phillips head on some models).

⚠ The Torx screw is hidden under a rubber gasket. Carefully, lift up the gasket without damaging it to access this screw.

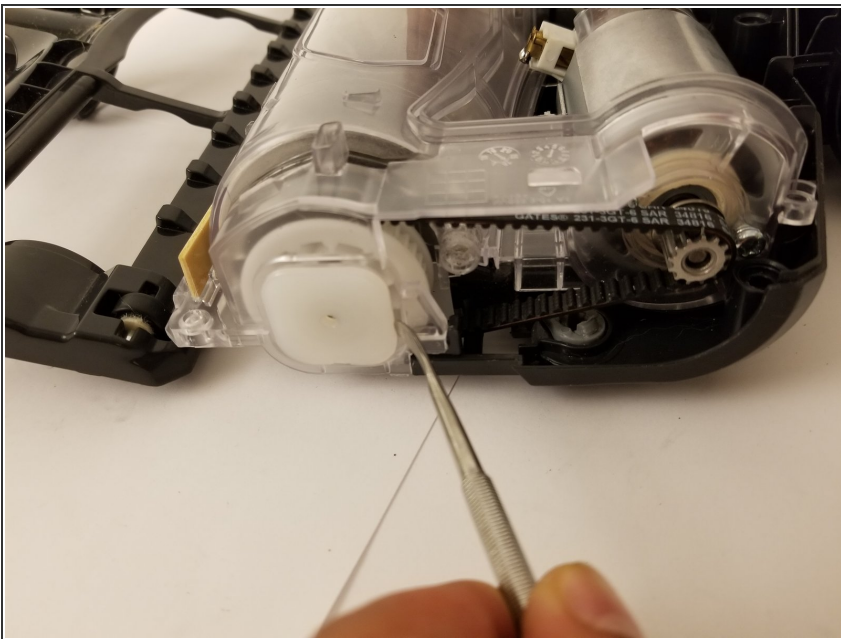
- Remove the horizontal screw (circled in orange) that attaches the gray side panel (necessary to remove the white cap on the roller brush in step 8)

Step 7



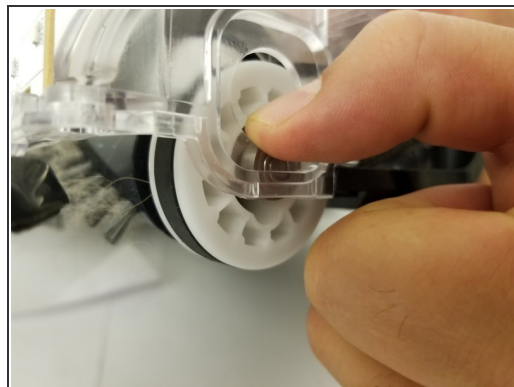
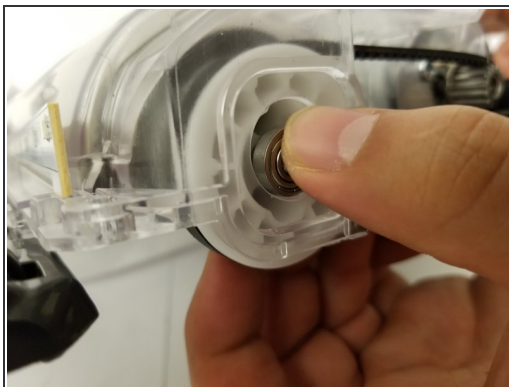
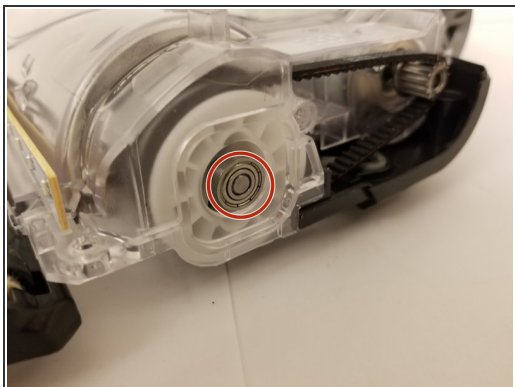
- Lift up the top cover now that all of the screws have been removed.

Step 8 — Brush Belt



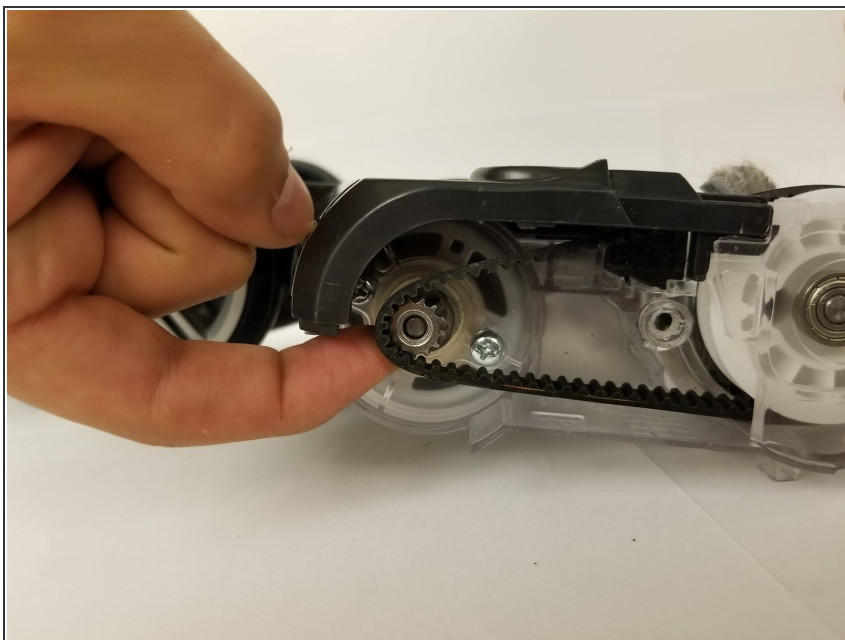
- Pry tab out with a flat head screwdriver or any wedge-like tool.

Step 9



- Gently press in on brush to detach.
- Pull brush down and out.

Step 10



- Slide the belt off of the gear.

To reassemble your device, follow these instructions in reverse order.