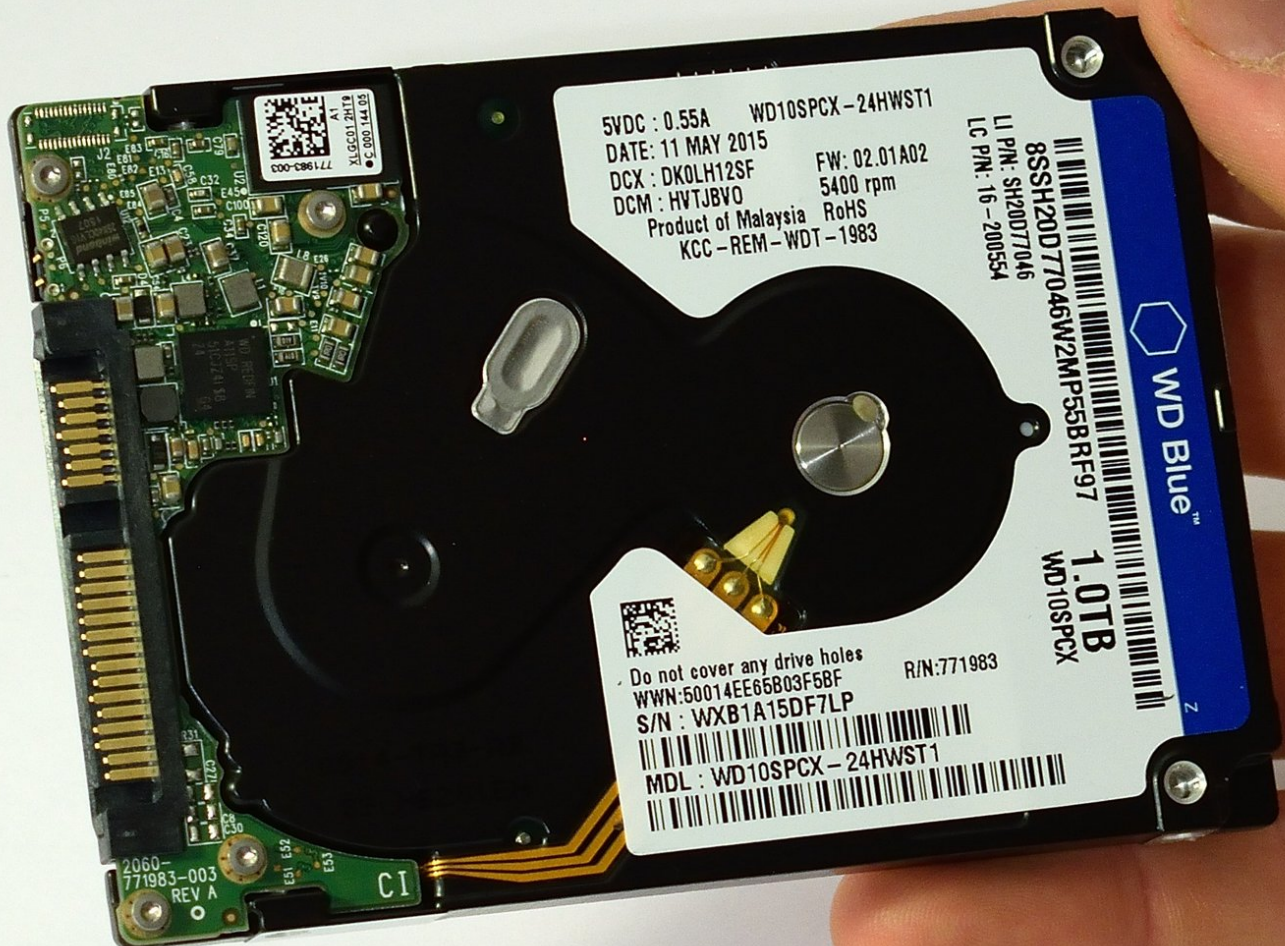




Lenovo Edge 15 Hard Drive Disk Replacement

This guide will instruct you on how to replace...

Written By: David Daley



INTRODUCTION

This guide will instruct you on how to replace your Edge 15's hard drive disk (HDD), or upgrade to a compatible solid state drive (SSD). Physical replacement of the hardware is a simple job, but installing an operating system (OS) on the new drive can be more involved.

This video may be helpful in showing you how to download a Windows operating system file and install it on your new hard drive: <https://www.youtube.com/watch?v=tjmRWFep...>



TOOLS:

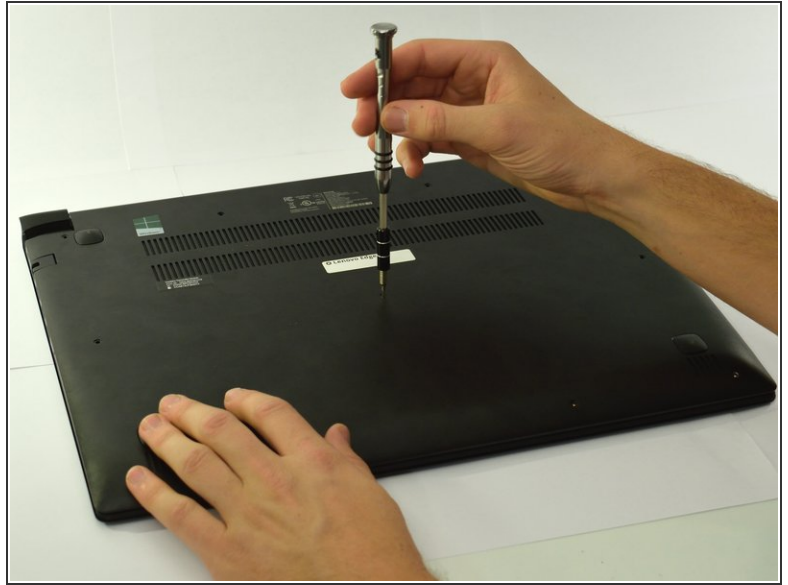
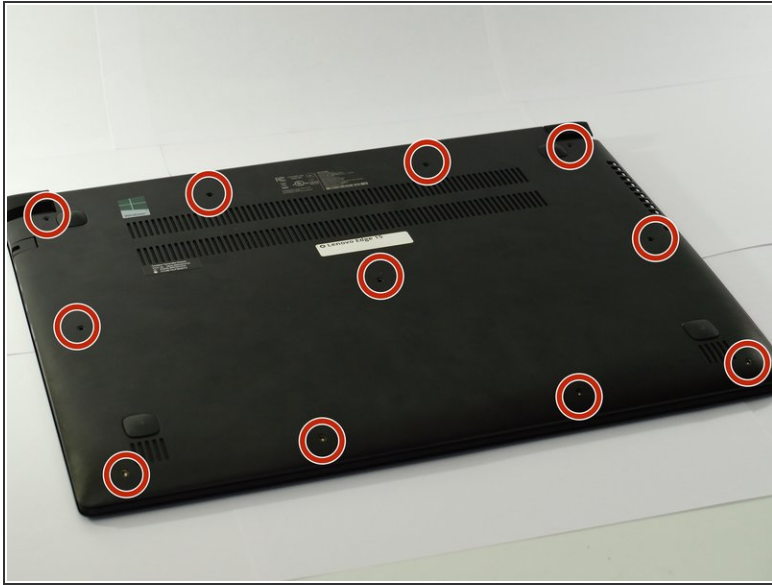
- [Phillips #0 Screwdriver](#) (1)
- [Phillips #1 Screwdriver](#) (1)



PARTS:

- [1 TB SSD](#) (1)
- [250 GB SSD](#) (1)
- [Crucial MX500 500 GB SSD](#) (1)
- [2 TB SSD](#) (1)

Step 1 — Battery



- Locate the eleven M2 x 6.0mm back-cover screws.
- Unscrew the screws using the Phillips #0 screwdriver.

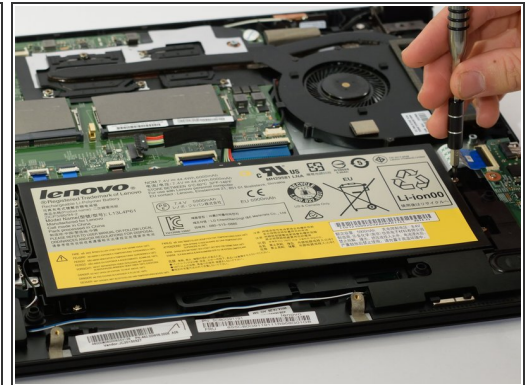
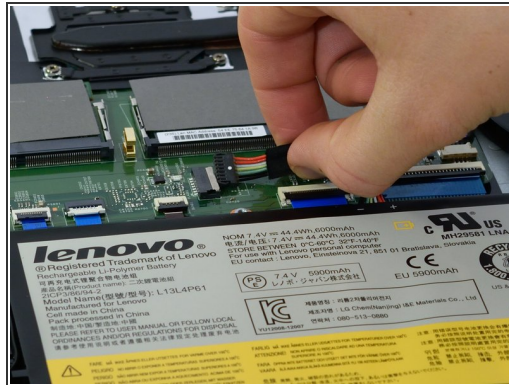
⚠ If battery is leaking, do not touch with bare hands.

Step 2



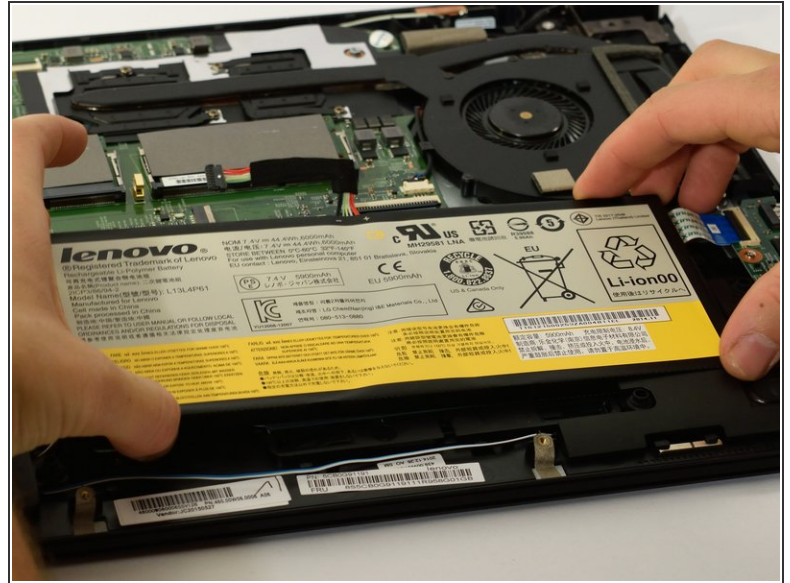
- Gently lift the cover plate off the body of the laptop, ensuring that it does not pull on any components such as the USB ports.

Step 3



- Locate the battery-connector and the three, M2 x 4.0mm screws holding the battery in place.
- Carefully unplug the battery-connector, wiggling the connector side to side if needed.
- Unscrew the 3-screws using the Phillips # 0 screwdriver.

Step 4



- Gently lift all four corners of the battery to remove it from the laptop.

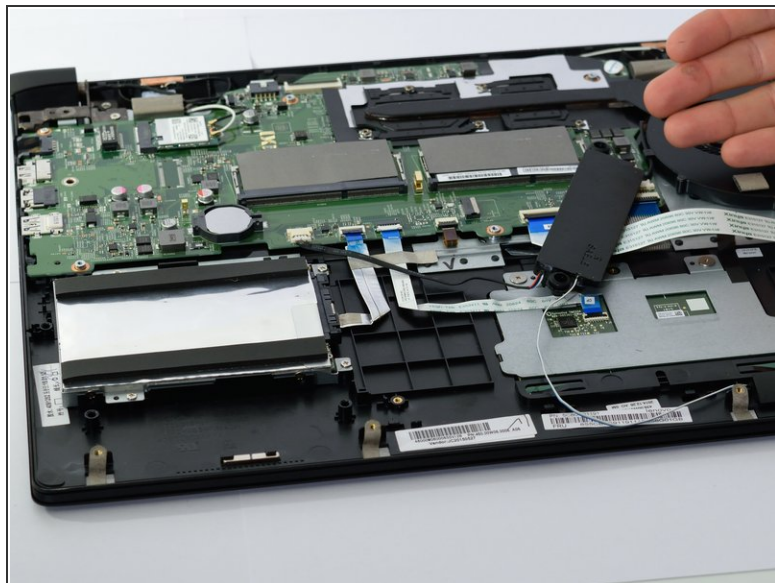
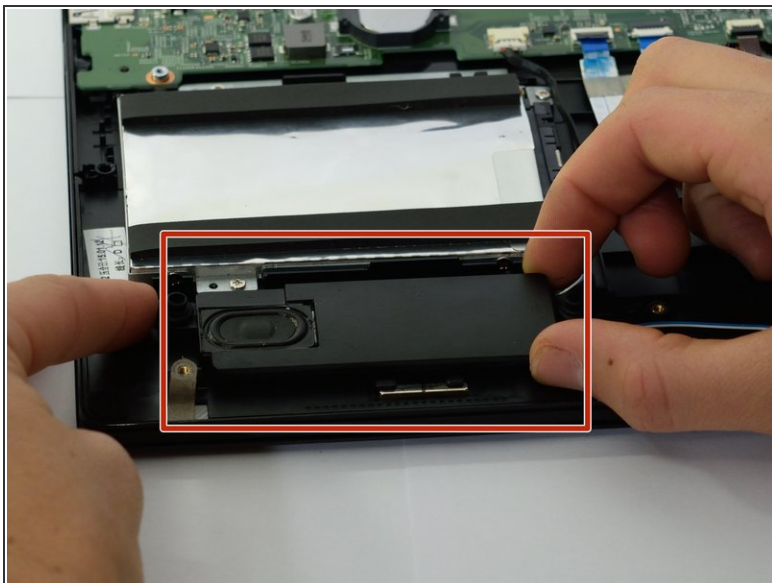
Step 5 — Hard Drive Disk



- Set the battery aside. This will allow easier access to the connector for the HDD.

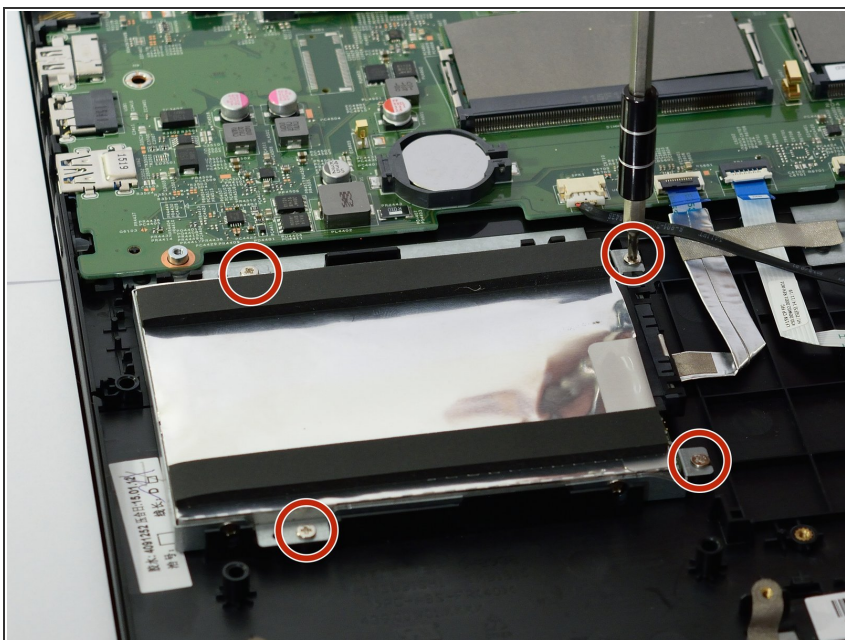
⚠ Keep the batches of screws from the battery, HDD, case and cover plate separate. Although the screws may look similar, they have slightly different lengths and thread pitches for the different components.

Step 6



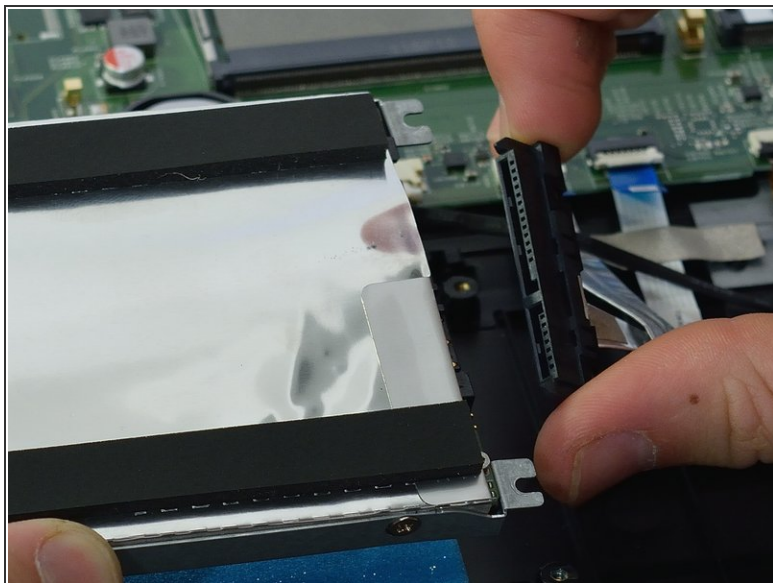
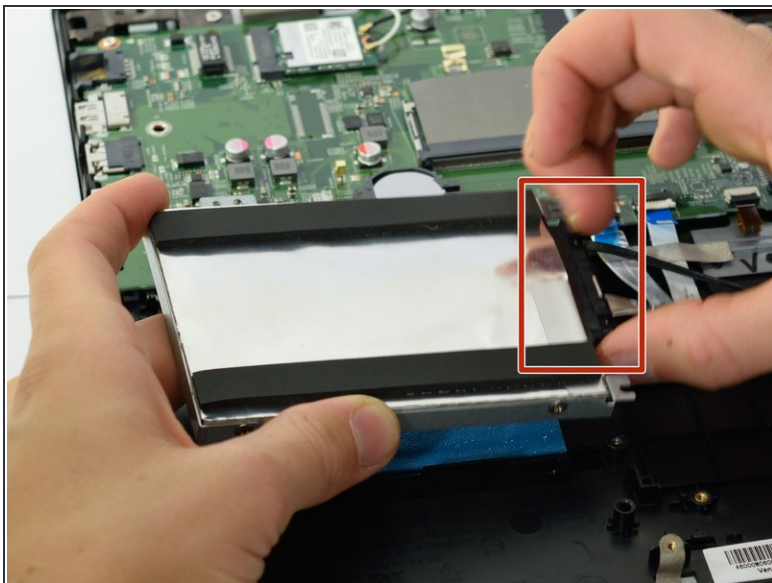
- The right side speaker can be lifted up off of its mounts and set out of the way if desired, but don't put sharp bends in the speaker wires.

Step 7



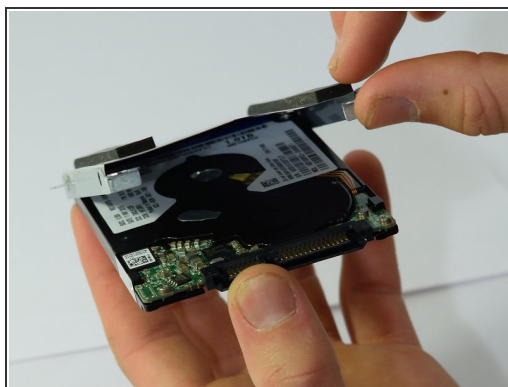
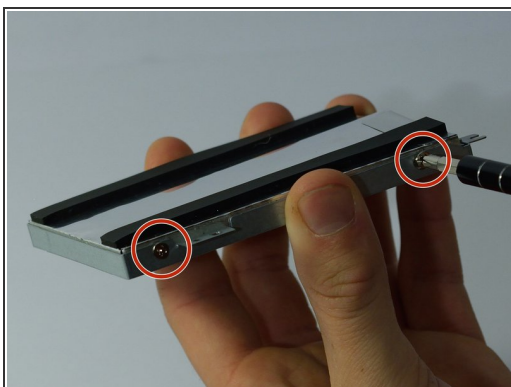
- With the Phillips #0 screwdriver, remove the 4 M2 x 4.0mm screws holding the HDD case to the laptop body.

Step 8



- Lift the HDD case up, and gently pull at the sides of the connector to disconnect it.

Step 9



- With the Phillips #1, remove the 4 M3 x 4.0mm screws on the sides of the case.
- The hard drive can now be removed.

To reassemble your device, follow these instructions in reverse order.

During assembly, take careful note of the following items:

- 1) Keep track of the correct screws for each application.
- 2) Components may need to be wiggled to allow for proper screw alignment.
- 3) Don't force screws in to avoid cross-threading.
- 4) Ensure proper connector alignment when reconnecting the HDD and battery cables.

Again, here is a video to help install a Windows OS on your new HDD: <https://www.youtube.com/watch?v=tjmRWFep...>