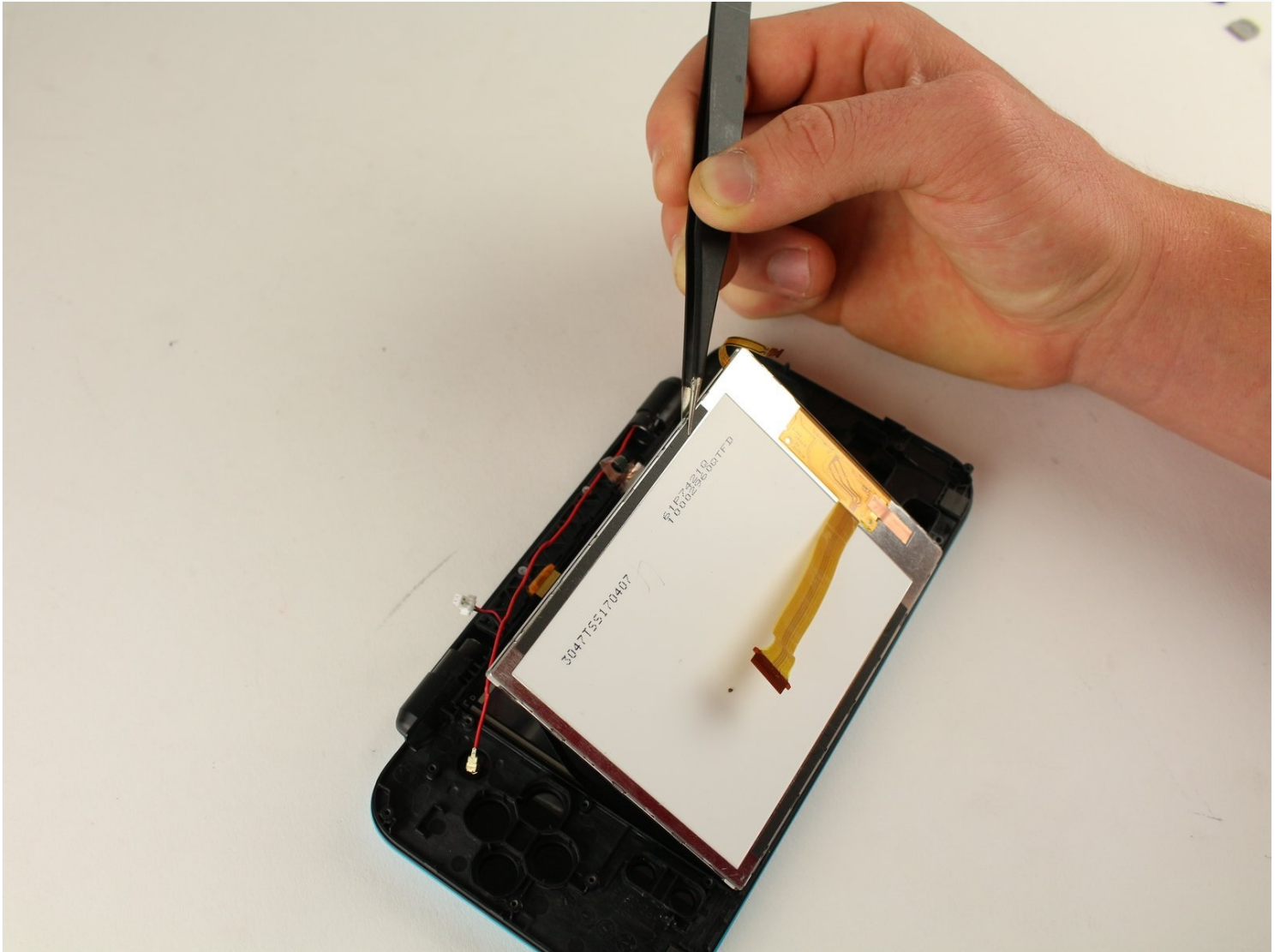




# New Nintendo 2DS XL Touchscreen Replacement

This guide outlines instructions for replacing...

Written By: Tim Newman



# INTRODUCTION

This guide outlines instructions for replacing a broken front screen . The touchscreen is the most buried component in the device, and lots of important cables need to be removed to access the screen. If the steps in this guide are followed, no damage is expected to come to the device. For more information, refer to our [troubleshooting page](#).

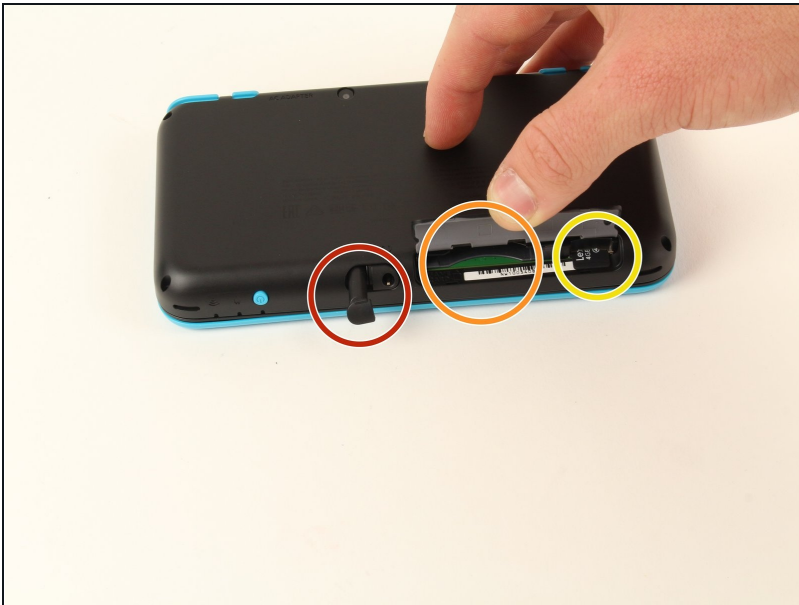
## TOOLS:

[Tri-point Y0 Screwdriver](#) (1)  
[Tweezers](#) (1)  
[Spudger](#) (1)  
[Phillips PH000 Screwdriver](#) (1)

## PARTS:

[New Nintendo 2DS XL Bottom Screen](#)  
(1)

## Step 1 — Back Cover Removal Preparation



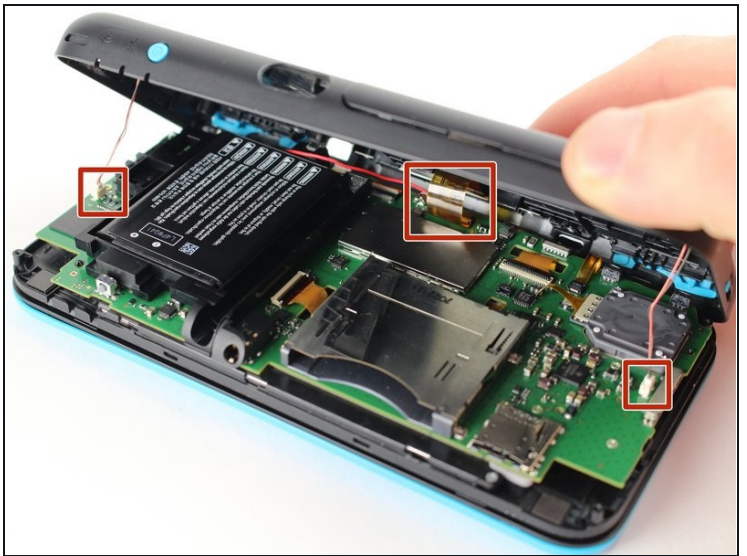
- Before starting the disassembly, remove
  - The stylus
  - Any game cartridge
  - The SD card

## Step 2 — Back Cover Removal



- Unscrew the four 6mm tri-point screws located at the four corners of the bottom panel.

## Step 3 — Case Separation



⚠ Be careful when separating the bottom panel from the front casing to avoid breaking the three cables connected to the motherboard (two on each side and one in the rear).

- Using a spudger, separate the back panel from the front casing by gently prying around the panel.
- There are many clips along the hinge of the case, so it is recommended to work your way along one short side and the two long sides before finishing the last short side.

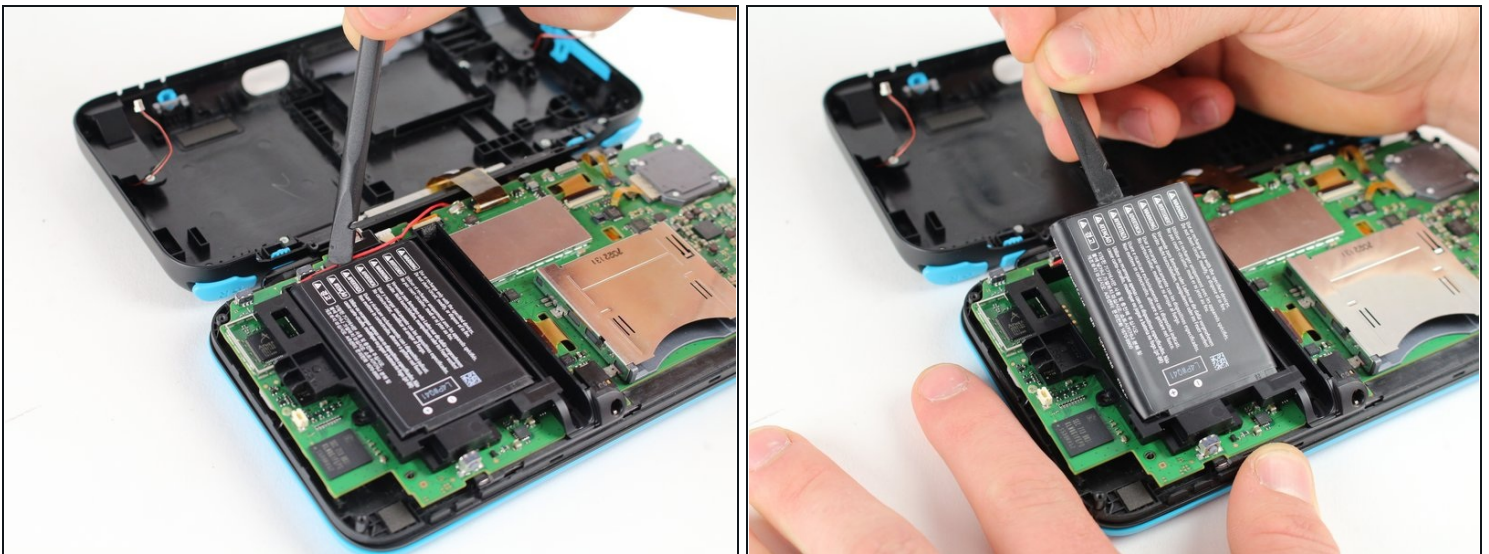


## Step 4



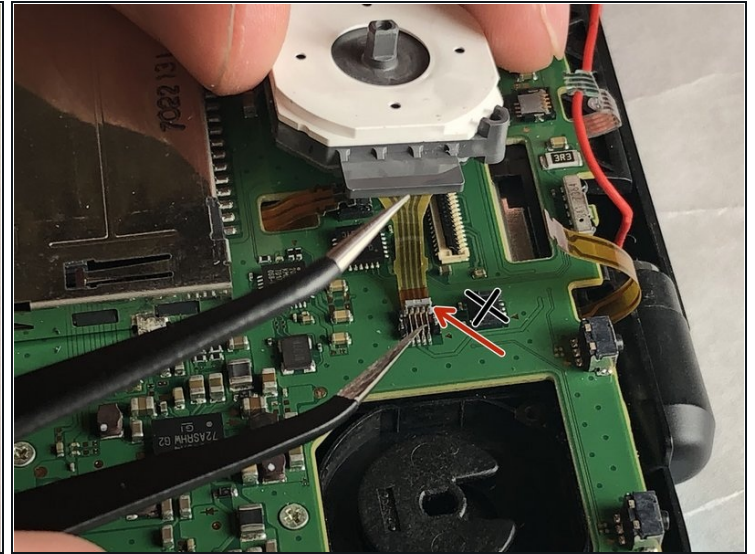
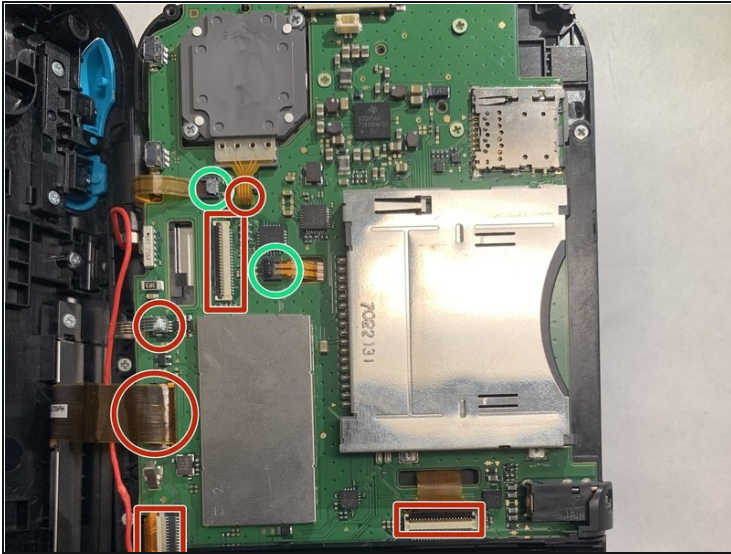
- Using [tweezers](#), disconnect the two cables that connect the rear buttons on either side to the motherboard by gently pulling them upwards.

## Step 5 — Battery Removal



- Using a spudger, lift out the battery.
- Be aware that there is a sticky pad holding the battery into its tray. It may be necessary to use multiple tools to gently pry the battery away from the tray and motherboard.

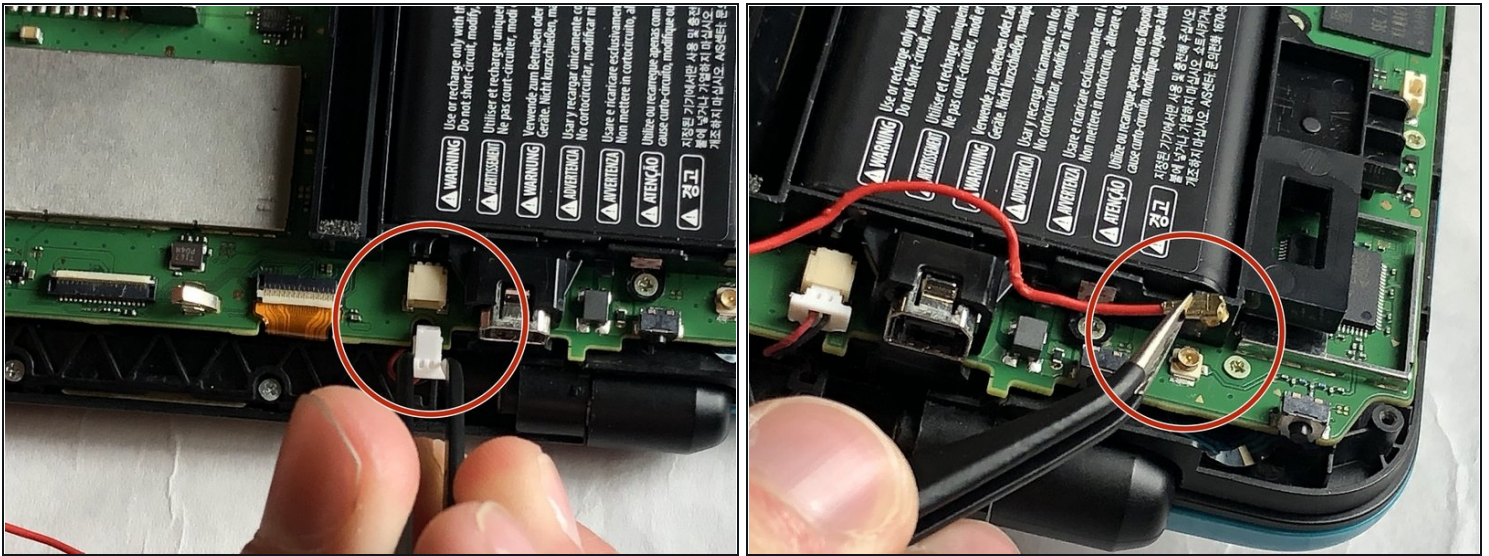
## Step 6 — Motherboard



- There are 8 ribbon cables that need to be removed as shown in the picture.
- ⚠ 2 of connectors (in green) are friction fit, unlike the rest of the connectors. Remove the cable by pulling it out gently. **Do not attempt to open or unlatch these connectors in any way.** Doing so will break them.
- For the remaining 6 (in red), use a pair of [tweezers](#) to flip the latches up and pull the ribbon cable out.
- Note that the second picture shows a broken ribbon connector next to the joystick ribbon connector (to the right of the red arrow). **Do not** attempt to unlatch this connector as shown in the picture!

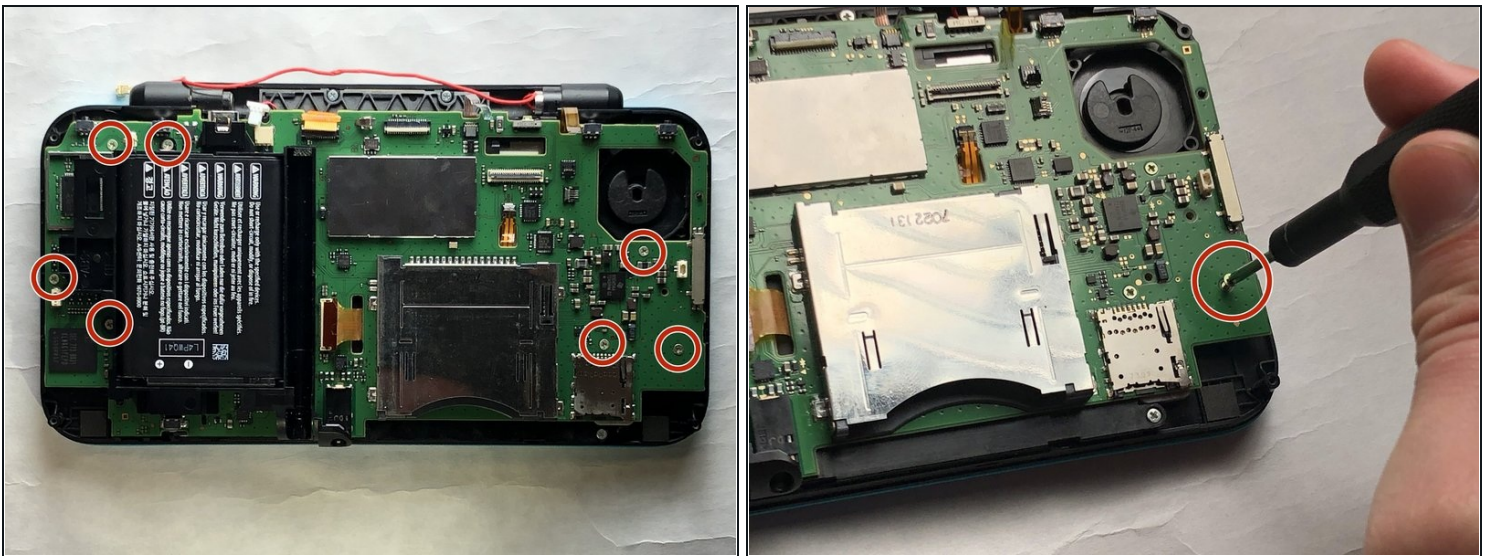


## Step 7



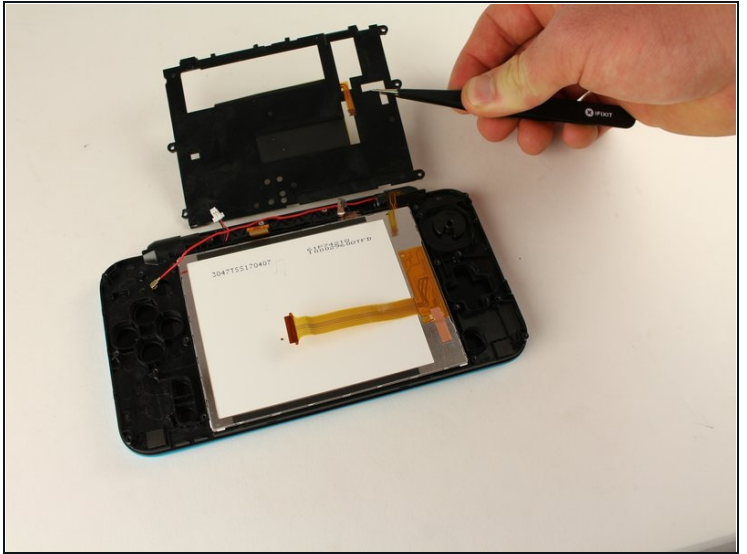
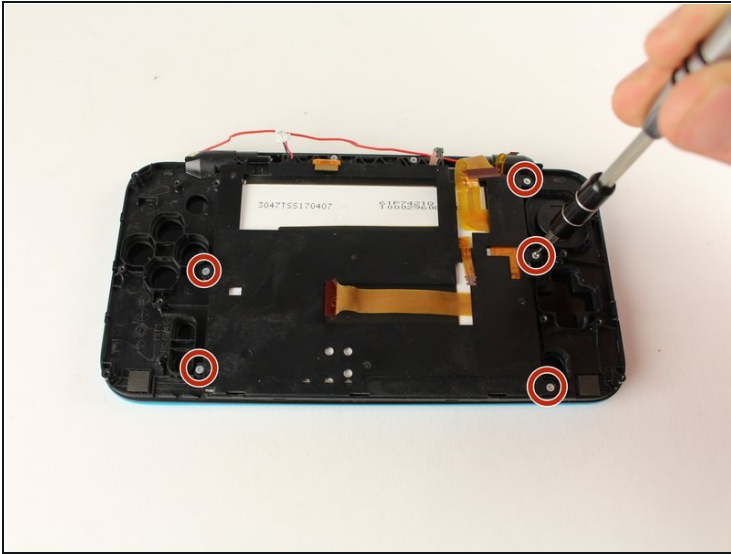
- Unplug the following wires from the motherboard using a pair of tweezers.

## Step 8



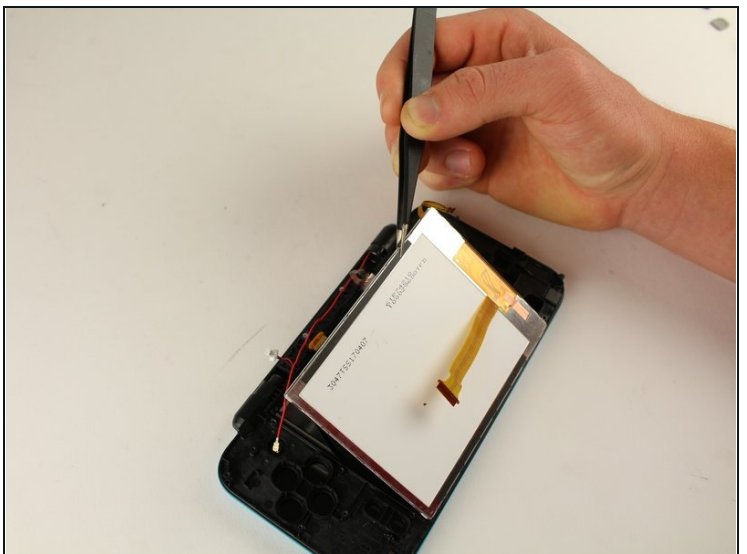
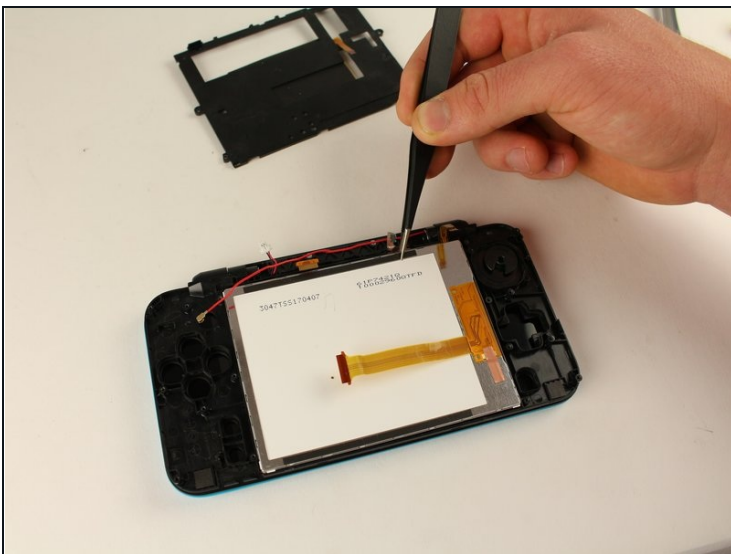
- Remove the seven 4.4 mm screws using a J00 Phillips screwdriver bit.
- Remove the motherboard from the device.

## Step 9 — Touchscreen



- Remove the five 7.5mm phillips screws using a PH000 screwdriver.
- Using [tweezers](#), pull up the plate covering the touchpad. The center ribbon cable will slide through this plate.

## Step 10



⚠ The bottom screen is stuck to the front with an adhesive border. Be careful to slowly separate the two. Quick separation can damage both components.

- Using tweezers, pry up the touchscreen.

---

To reassemble your device, follow these instructions in reverse order.