



New Nintendo 2DS XL Front Buttons Replacement

This guide provides the procedure for replacing...

Written By: Tim Newman



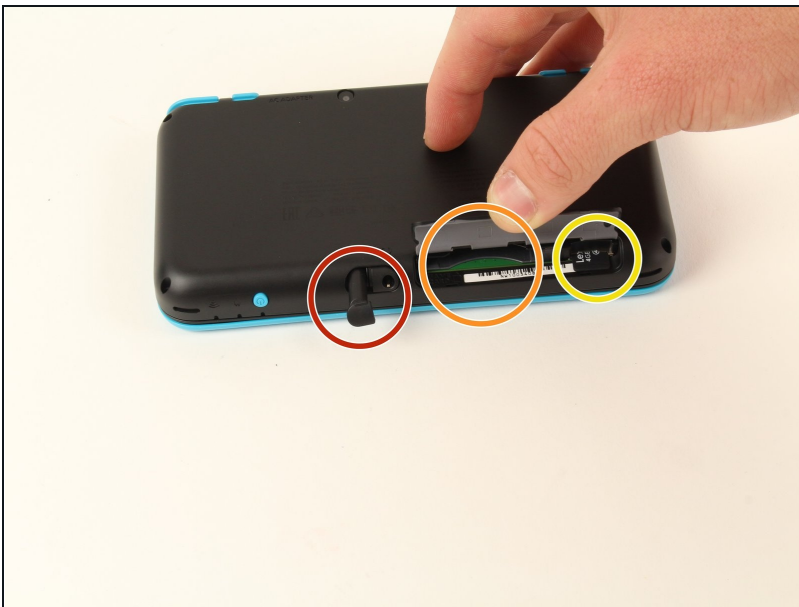
INTRODUCTION

This guide provides the procedure for replacing the front buttons on the device. To access the front buttons, the device case needs to be opened. The process of opening the device might be intimidating at first, but the proper precautions are outlined in the guide. No device damage is expected if the guide steps are followed. For more information, refer to our [troubleshooting page](#).

TOOLS:

Tri-point Y0 Screwdriver (1)
Tweezers (1)
Spudger (1)
Phillips PH000 Screwdriver (1)

Step 1 — Back Cover Removal Preparation



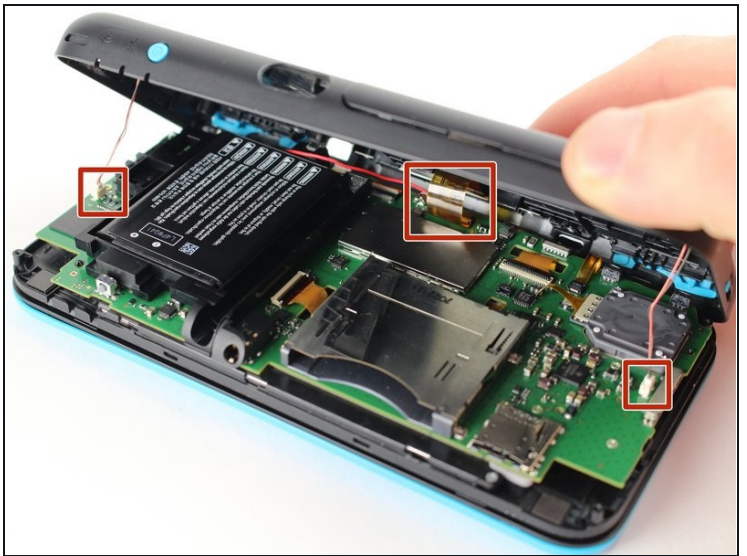
- Before starting the disassembly, remove
 - The stylus
 - Any game cartridge
 - The SD card

Step 2 — Back Cover Removal



- Unscrew the four 6mm tri-point screws located at the four corners of the bottom panel.

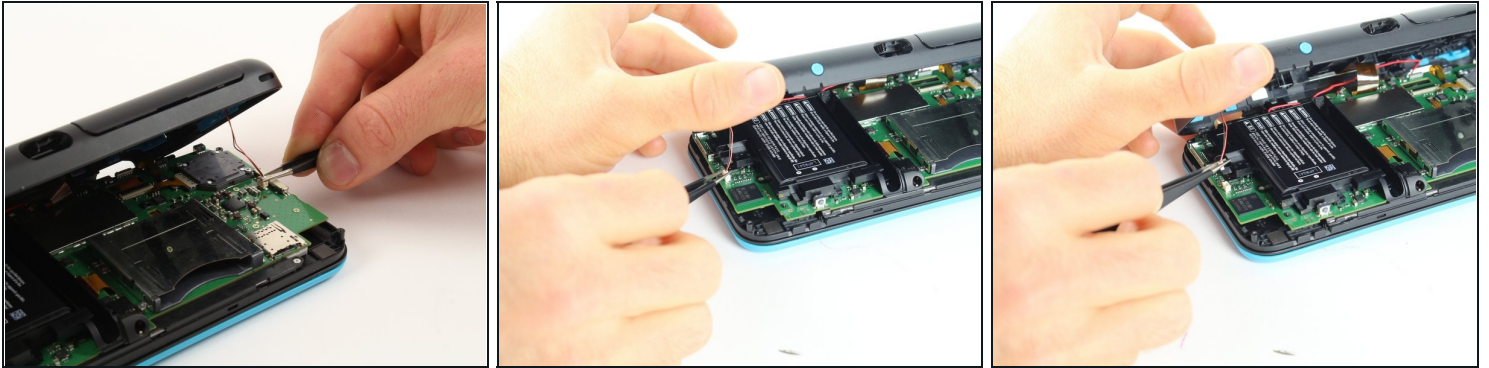
Step 3 — Case Separation



⚠ Be careful when separating the bottom panel from the front casing to avoid breaking the three cables connected to the motherboard (two on each side and one in the rear).

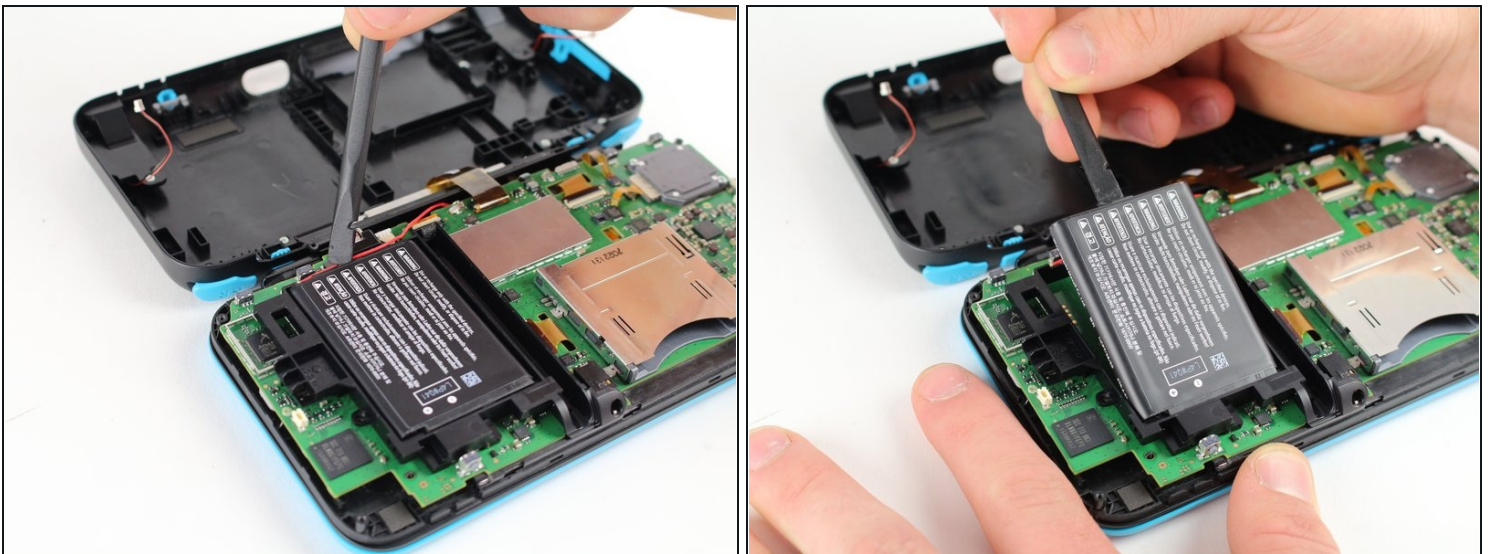
- Using a spudger, separate the back panel from the front casing by gently prying around the panel.
- There are many clips along the hinge of the case, so it is recommended to work your way along one short side and the two long sides before finishing the last short side.

Step 4



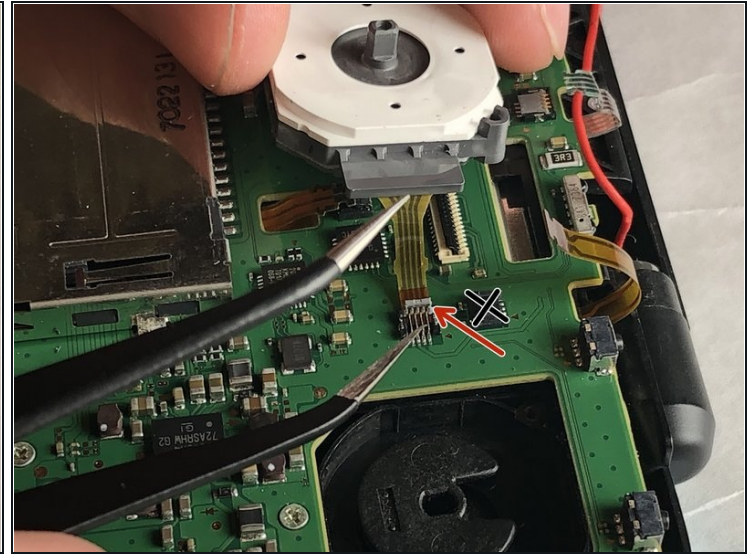
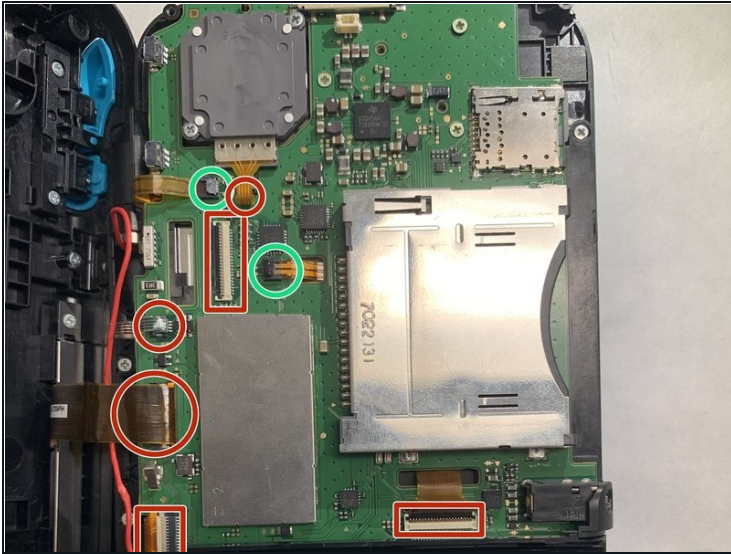
- Using tweezers, disconnect the two cables that connect the rear buttons on either side to the motherboard by gently pulling them upwards.

Step 5 — Battery Removal



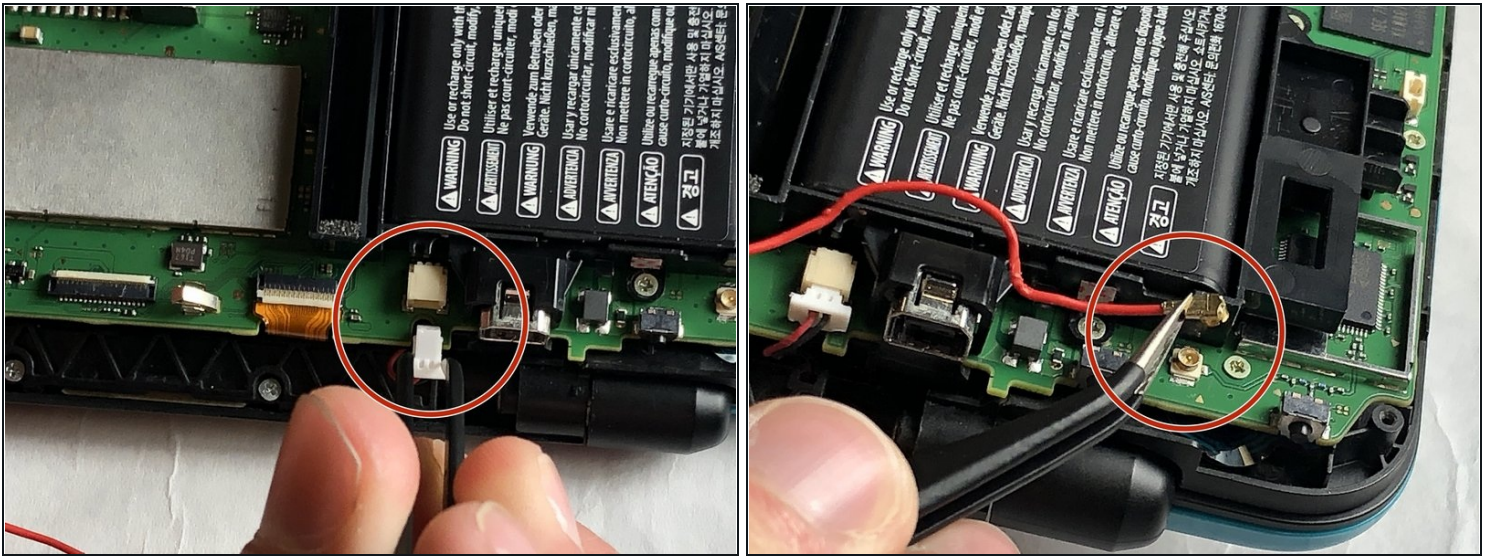
- Using a spudger, lift out the battery.
- Be aware that there is a sticky pad holding the battery into its tray. It may be necessary to use multiple tools to gently pry the battery away from the tray and motherboard.

Step 6 — Motherboard



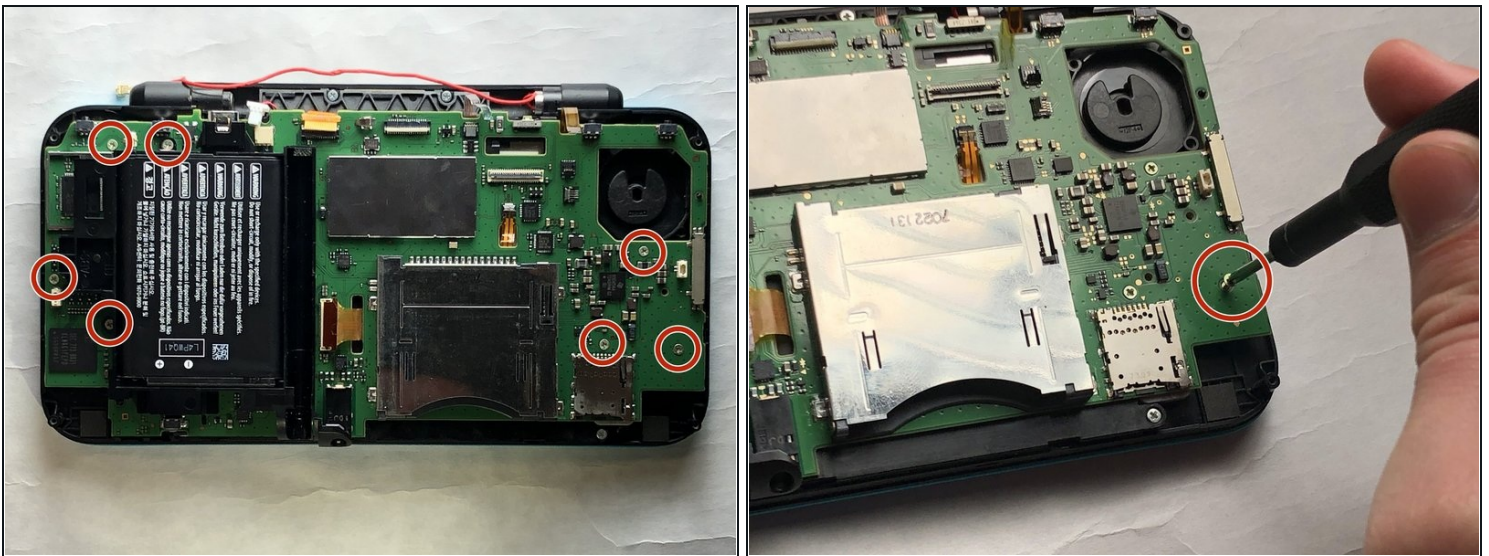
- There are 8 ribbon cables that need to be removed as shown in the picture.
- ⚠ 2 of connectors (in green) are friction fit, unlike the rest of the connectors. Remove the cable by pulling it out gently. **Do not attempt to open or unlatch these connectors in any way.** Doing so will break them.
- For the remaining 6 (in red), use a pair of tweezers to flip the latches up and pull the ribbon cable out.
- Note that the second picture shows a broken ribbon connector next to the joystick ribbon connector (to the right of the red arrow). **Do not** attempt to unlatch this connector as shown in the picture!

Step 7



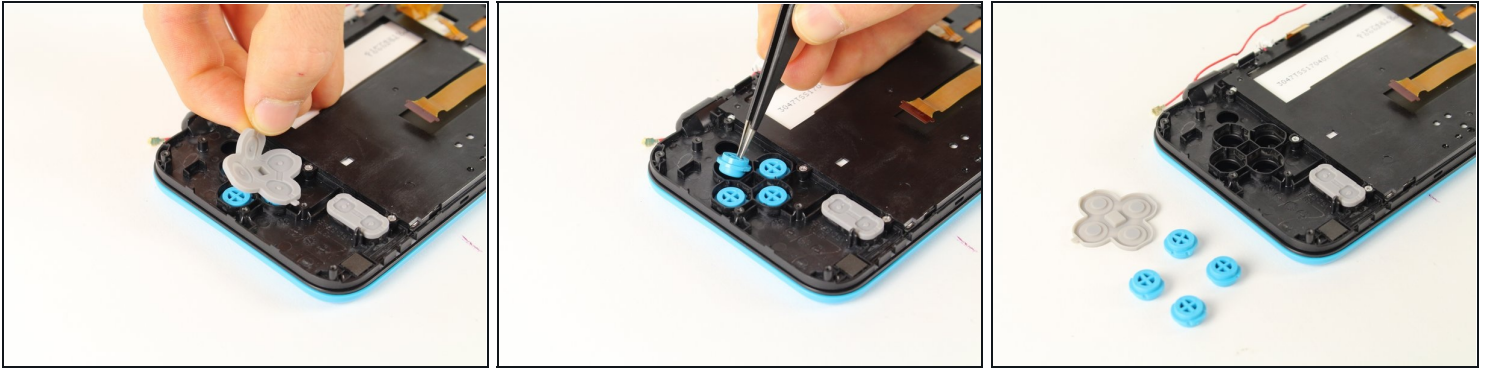
- Unplug the following wires from the motherboard using a pair of tweezers.

Step 8



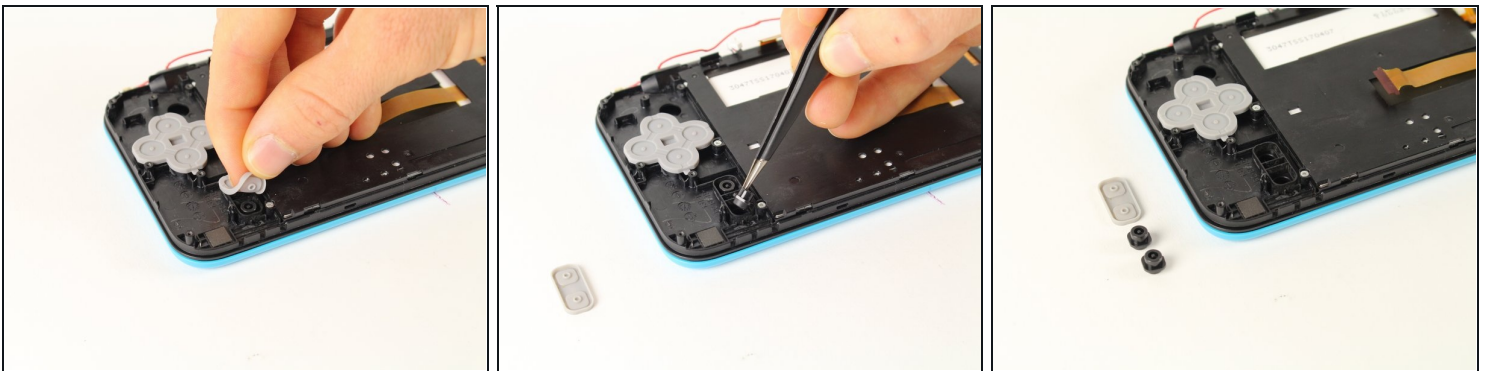
- Remove the seven 4.4 mm screws using a J00 Phillips screwdriver bit.
- Remove the motherboard from the device.

Step 9 — Button Removal



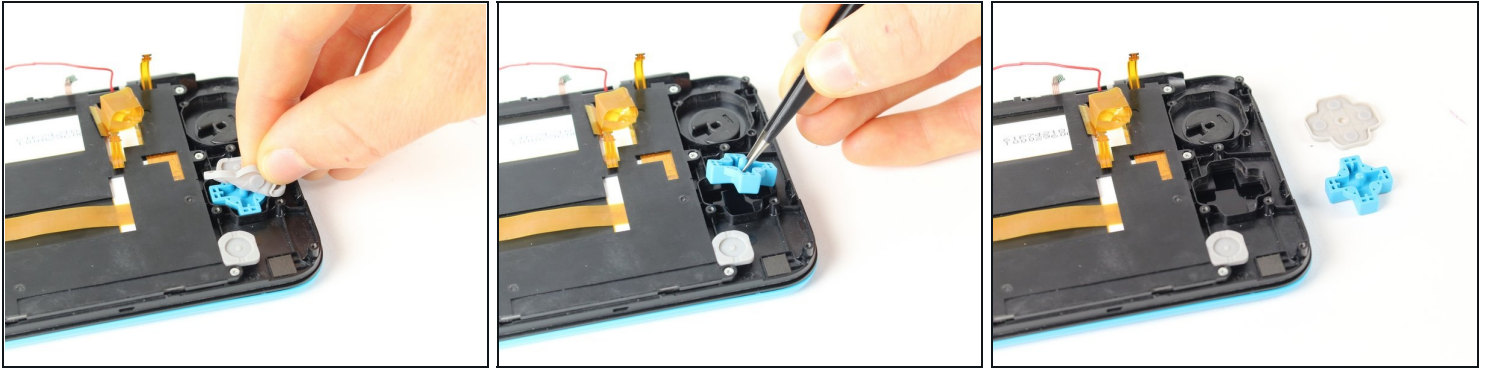
- Lift off the rubber cover on the A, B, X, and Y buttons.
- Using tweezers, lift out the buttons.

Step 10



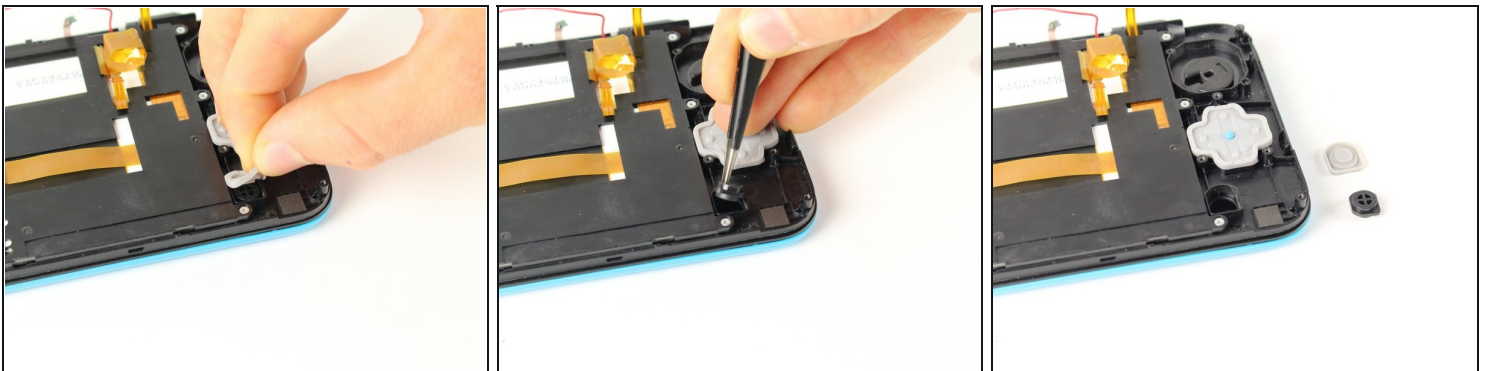
- Lift off the grey rubber cover on the start and select buttons.
- Using tweezers, lift out the buttons.

Step 11



- Lift off the grey rubber membrane on the D-pad.
- Using tweezers, lift the D-pad out.

Step 12



- Lift off the grey rubber membrane covering the home button.
- Using tweezers, lift out the button.

To reassemble your device, follow these instructions in reverse order.