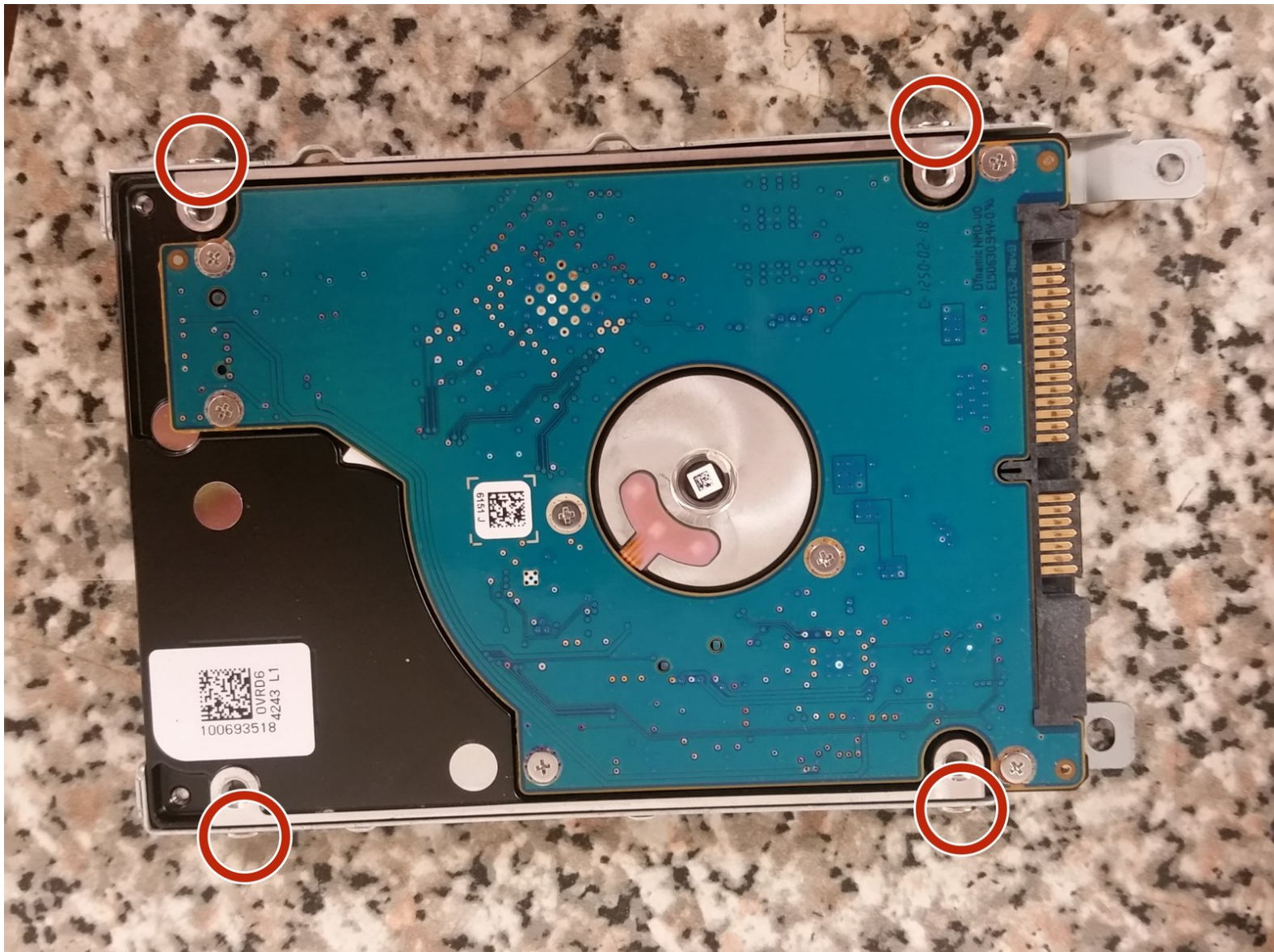




Gateway NE56R Series Hard Drive Replacement

This guide teaches you how to replace the hard drive in a Gateway NE series laptop.

Written By: Joseph Sctbunio



INTRODUCTION

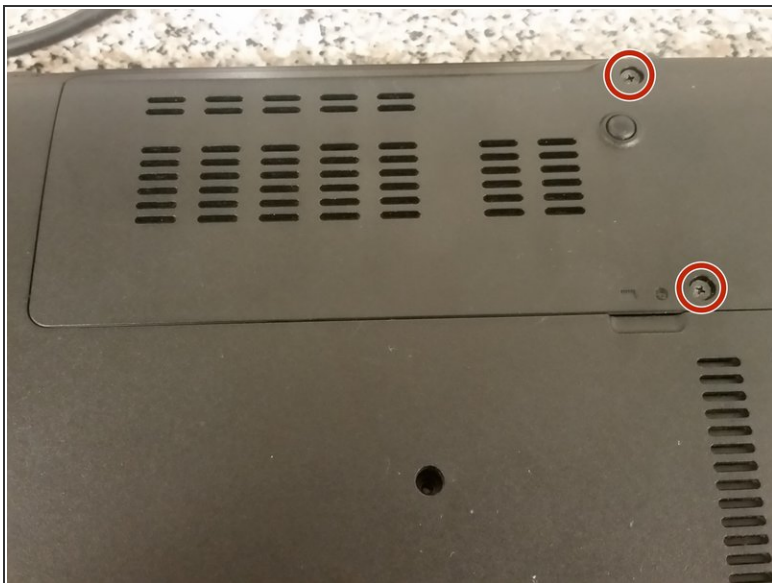
This guide teaches you how to replace the hard drive in a Gateway NE series laptop.



TOOLS:

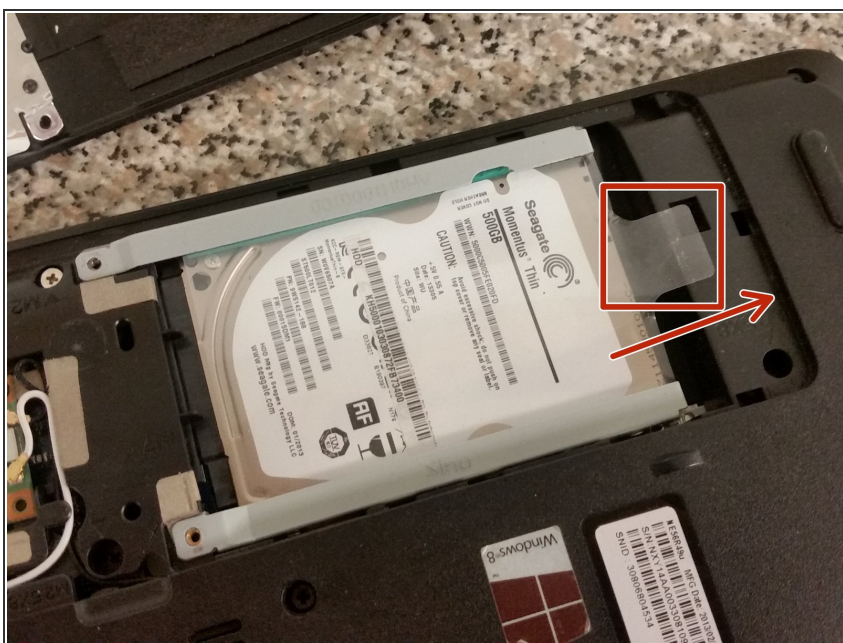
- [Essential Electronics Toolkit](#) (1)
-

Step 1 — Remove hard drive cover



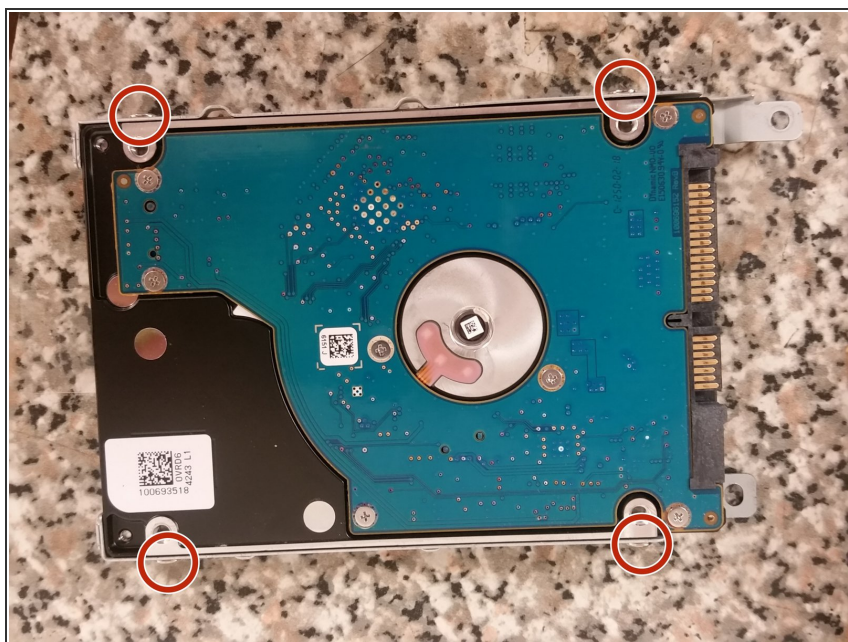
- Remove the two Philips screws securing the hard drive cover to the base.
- Pry the hard drive cover off with a spudger.

Step 2 — Remove hard drive caddy



- With the laptop's battery side facing you, pull the hard drive caddy's tab to the right.

Step 3 — Remove hard drive



- i This step is unnecessary if you are only taking the hard drive out for testing purposes or are removing the motherboard.
- Remove the four screws securing the hard drive to the caddy.

To reassemble your device, follow these instructions in reverse order.