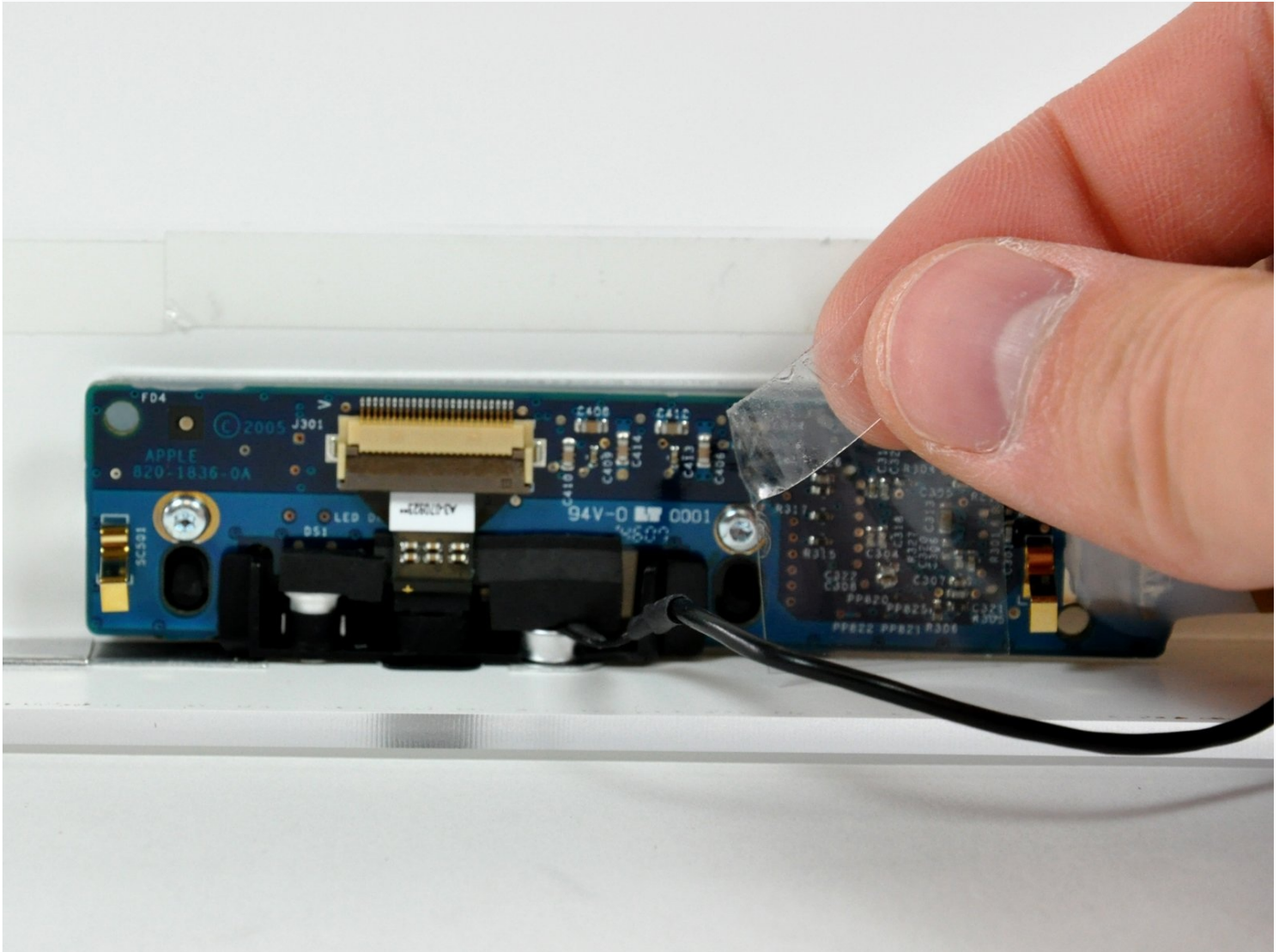




iMac G5 17" Model A1144 Camera Board Replacement

iSight not working? Replace your camera board.

Written By: Andrew Bookholt



INTRODUCTION

iSight not working? Replace your camera board.

TOOLS:

Phillips #1 Screwdriver (1)


Plastic Cards (1)

T6 Torx Screwdriver (1)


TR8 Torx Security Screwdriver (1)

Step 1 — Access Door

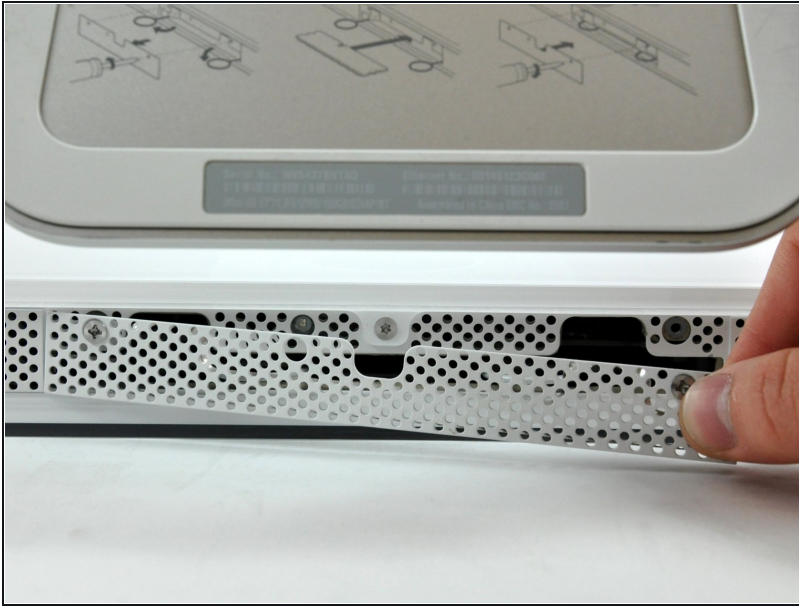


 Before you work on the computer, unplug the computer and press the power button for 20-30 seconds to drain the stored energy in the power supply.

● Loosen the two Phillips screws securing the access door to your iMac.

 These screws are captive in the access door.

Step 2



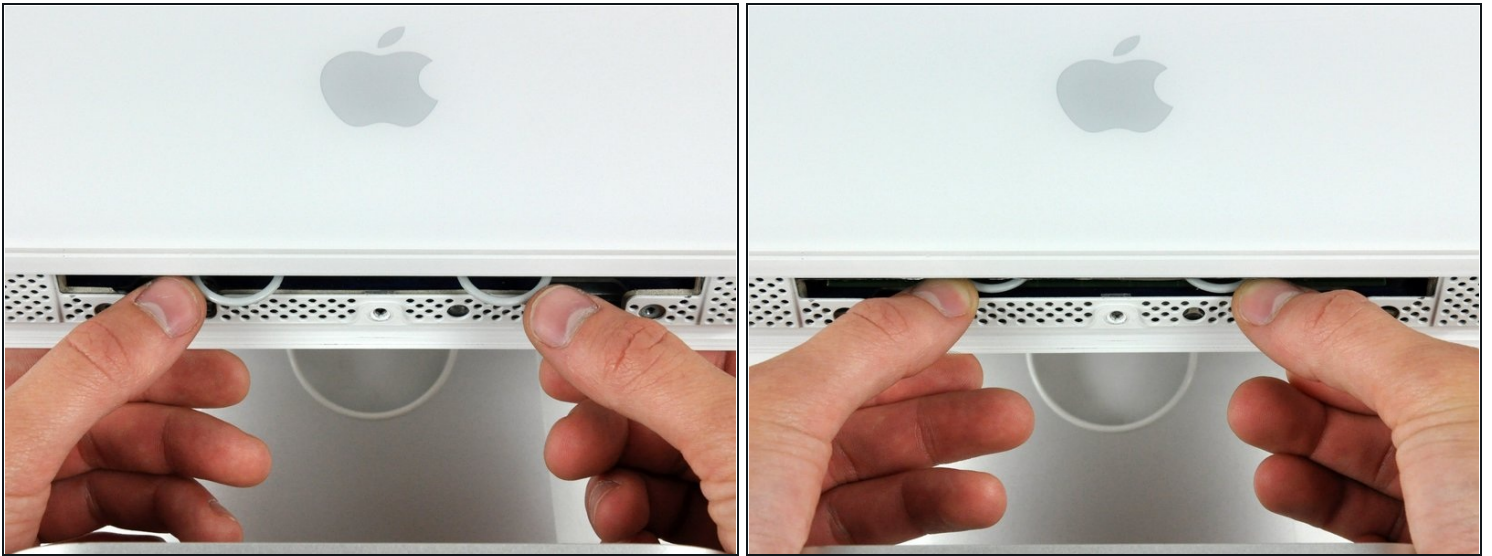
- Remove the access door from your iMac.

Step 3 — Front Bezel



- Remove the three T8 Torx screws securing the front bezel to the rear panel.

Step 4



① Orient the iMac face-up, on its backside.

- Use your thumbs to press both RAM arms in past the front bezel for enough clearance to lift it off the rear case.

Step 5



- While holding the RAM arms in with your thumbs, lift the lower edge of the front bezel enough to clear the rear case.

Step 6



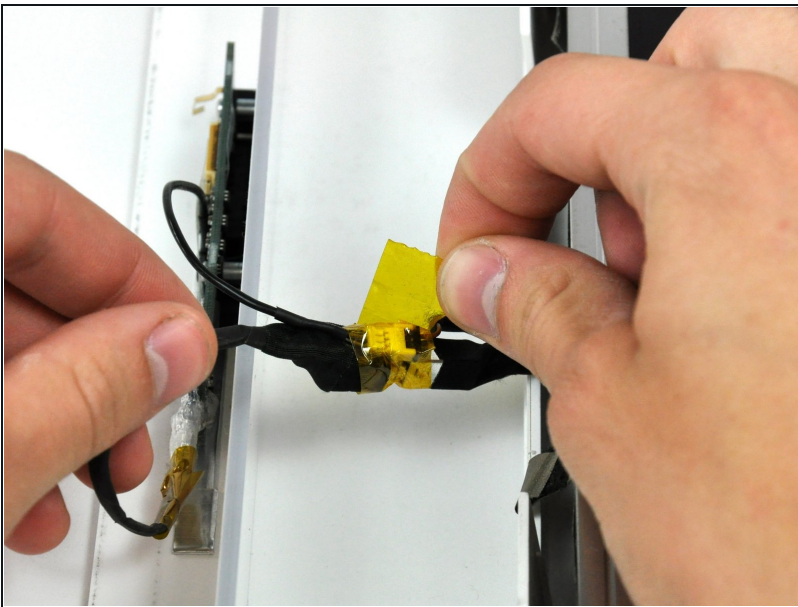
- ① Re-orient your iMac so it sits upright on the stand.
- Insert a [plastic card](#) up into the corner of the air vent slot at the top of the rear case.
- Push the card toward the top of the iMac to release the front bezel latch.
- Pull the front bezel away from the rear case.
- Repeat this process for the other side of the front bezel.
- ① It may be necessary to apply several layers of duct tape to the top of the access card to aid in releasing the latches.
- ① If the bezel refuses to release, try pressing the lower edge back onto the rear case and repeat this opening process.

Step 7



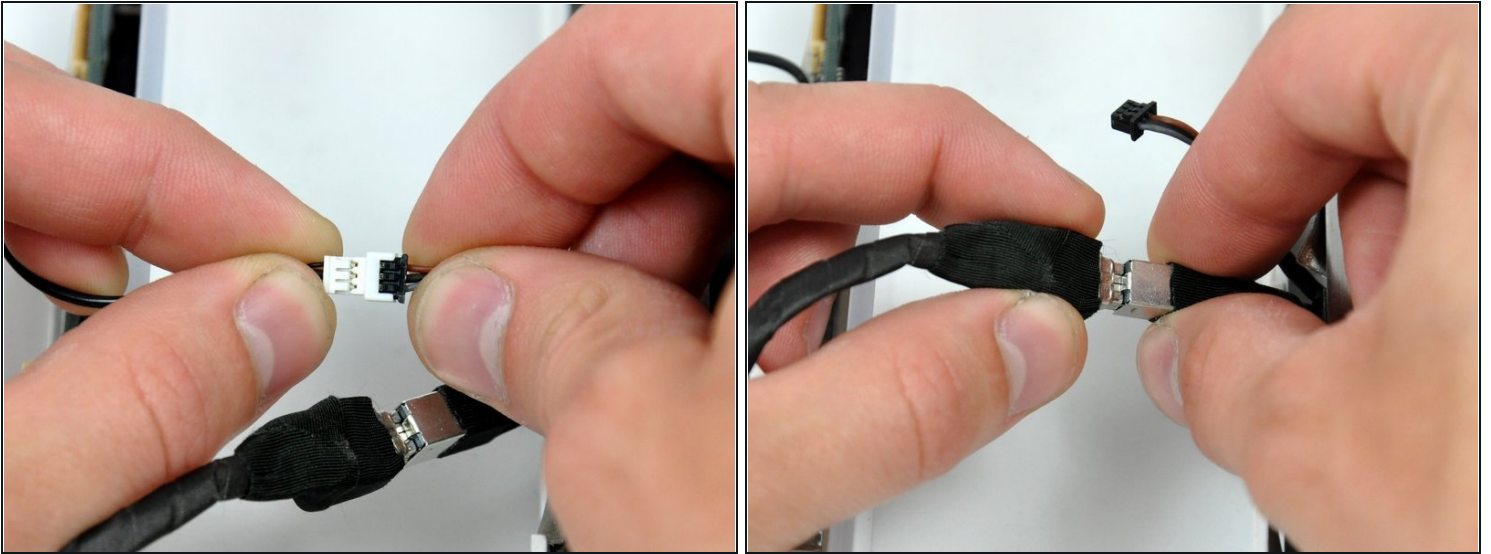
- Lay your iMac stand-side down on a table.
- Lift the front bezel from its lower edge and rotate it away from the rest of your iMac, minding the RAM arms that may get caught.
- Lay the front bezel above the rest of the iMac.

Step 8



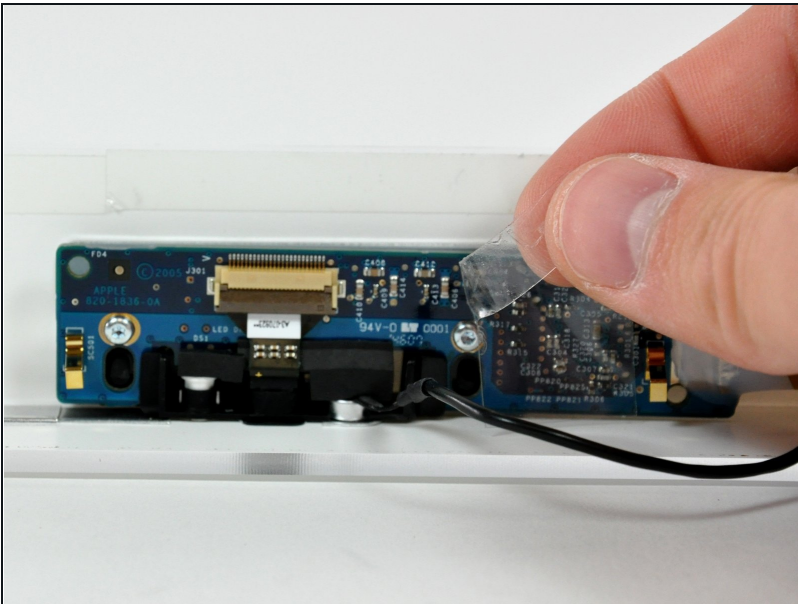
- If necessary, remove the piece of kapton tape wrapped around the microphone and camera cables.

Step 9



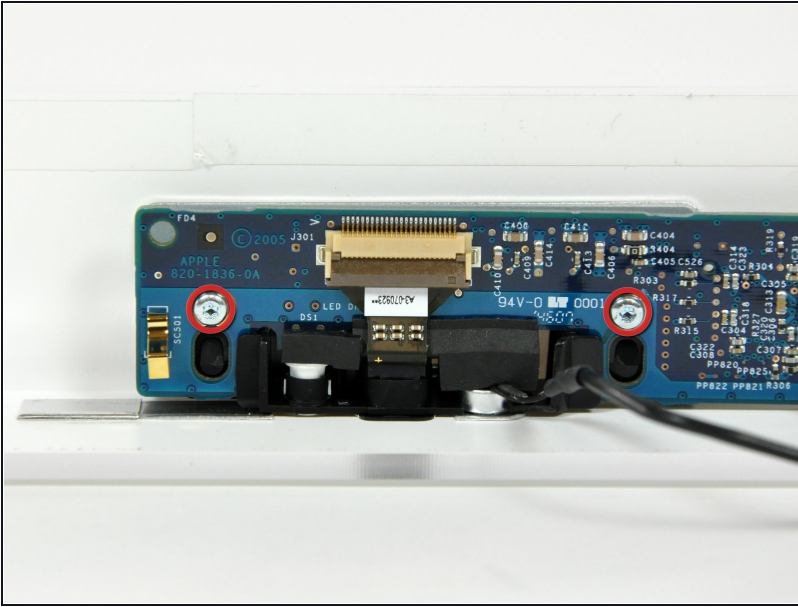
- Disconnect both the camera and microphone cables.

Step 10 — Camera Board



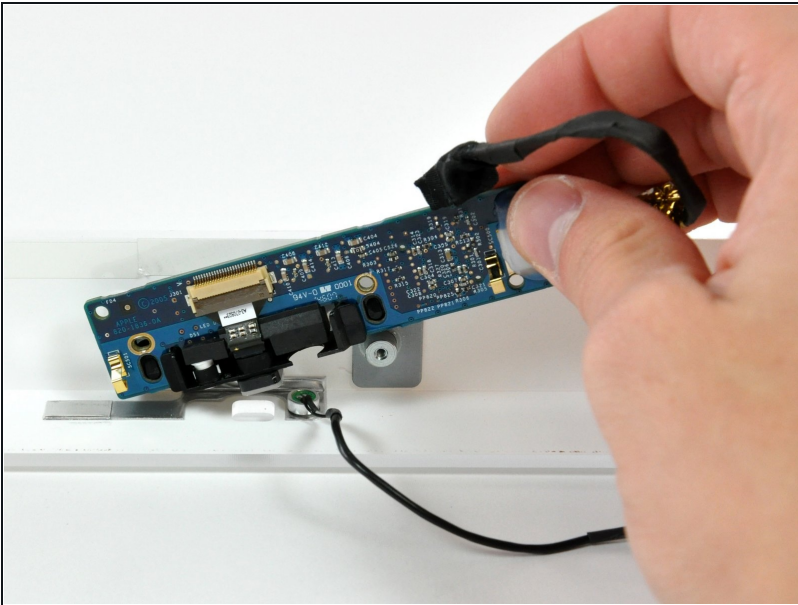
- Lay the bezel front side down on a table.
- If necessary, peel back the tape covering the camera board.

Step 11



- Remove the two T6 Torx screws securing the camera board to the front bezel.

Step 12



- Lift the camera board out from the front bezel.

To reassemble your device, follow these instructions in reverse order.