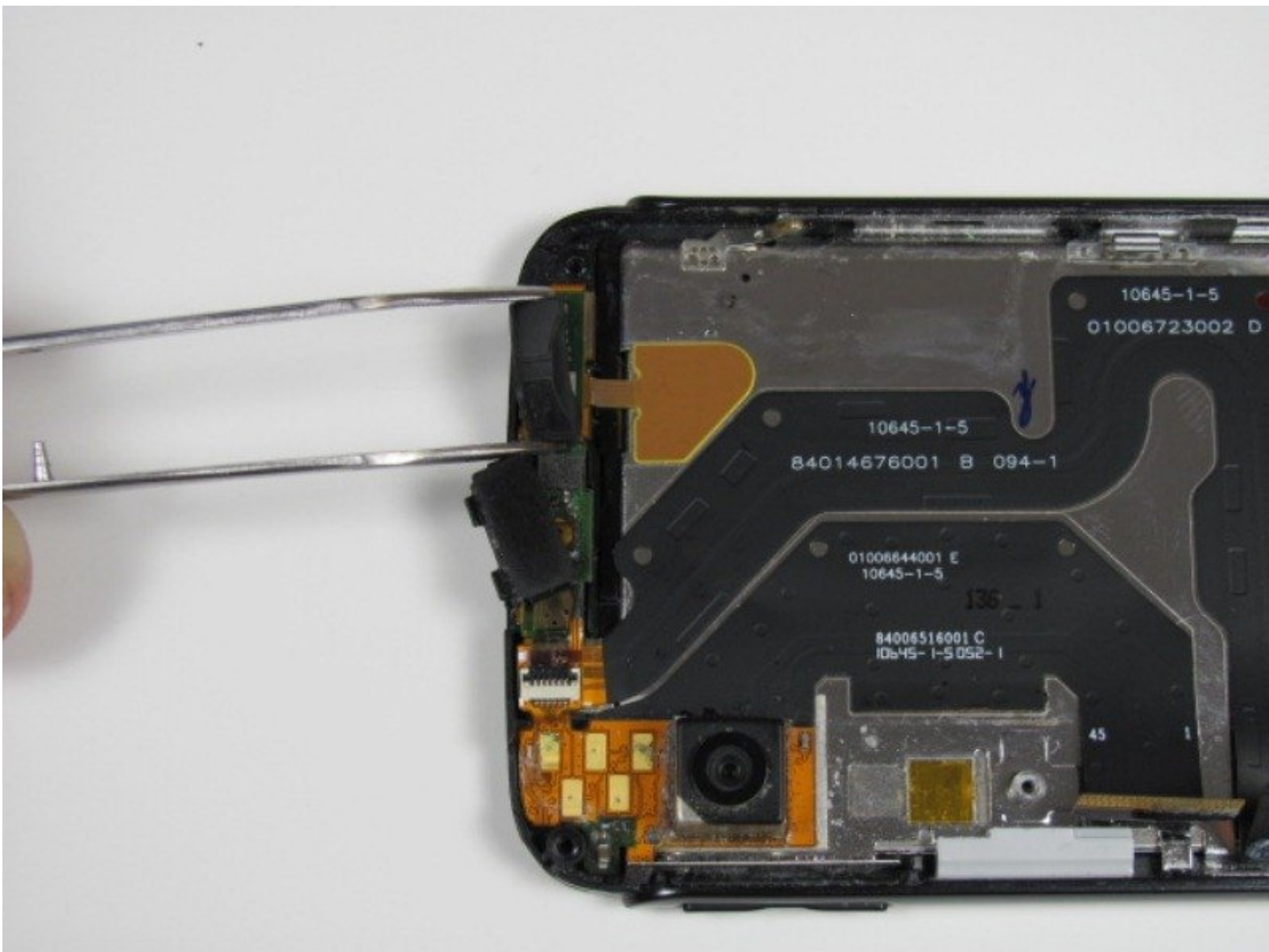




Motorola Atrix 4G Top Speaker Replacement

The following guide will lead one in installing the top speaker primarily used for phone calls in the Motorola Atrix 4G.

Written By: Derek Walker



INTRODUCTION

To remove the speaker you will first need to remove the battery, open the phone and remove the motherboard. Be ready to use a plastic opening tool, T5 Torx Screwdriver, spudger and heat gun or hair dryer.

TOOLS:

- [iFixit Opening Tool](#) (1)
 - [Spudger](#) (1)
 - [T5 Torx Screwdriver](#) (1)
-

Step 1 — Battery



- Pry the rear cover from the back of the phone.

Step 2



- Insert a spudger or plastic opening tool into the small notch at the base of the battery.
- Lift the battery out of the phone.

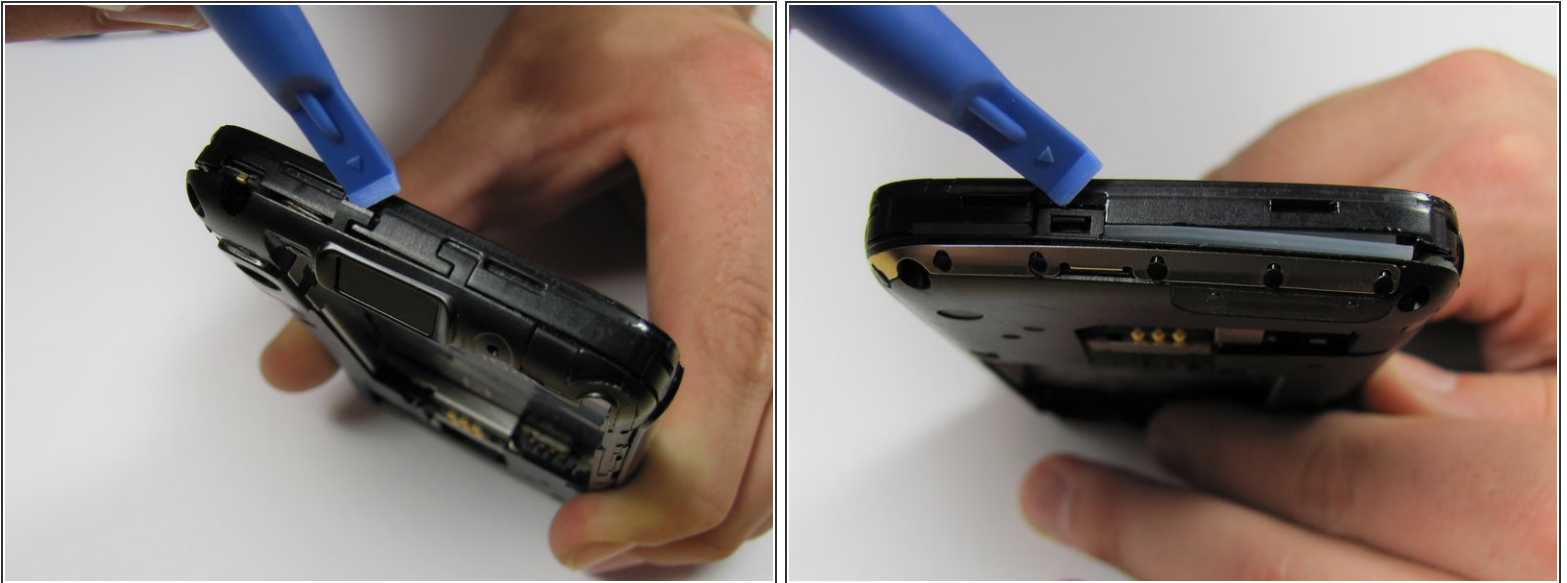
Step 3 — Antenna



- Remove the four 5.0 mm T5 Torx screws from the corners of the phone.
- Remove three 5.5 mm T5 Torx screws from the back of the phone.
- Lift up the black rubber flap near the SD card slot.
- Remove the single 5.5 mm T5 Torx screw beneath the flap.

⚠ Do not attempt to loosen the screws with too much force. These screws are small, and easily stripped.

Step 4



- Remove the back case of the phone by gently lifting the tabs located on top of the phone near the lock button.
- Use the case opener or spudger in these small areas because the plastic tabs can be easily broken.
- Lift the tabs located on the bottom of the phone to continue removing the back cover.

Step 5



- Slide an opening tool between the gap from the back of the case to the front.
- After separating the sides, make sure there is a noticeable gap between the back case and the rest of the phone.
- After detaching the tabs and sliding down the sides, there should be a noticeable gap between the front and back cases.

Step 6



- Carefully separate the back case from the rest of the phone by lifting it away from the phone.

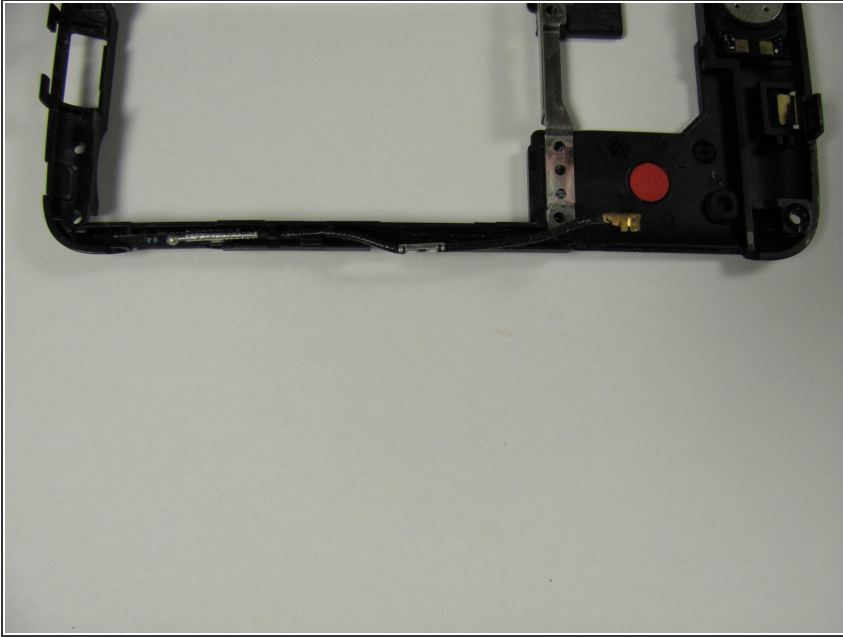
⚠ Do not completely remove the case from the rest of the phone. The antenna is connected to both cases.

Step 7



- Disconnect the antenna from its housing on the motherboard by gently lifting beneath it.

Step 8



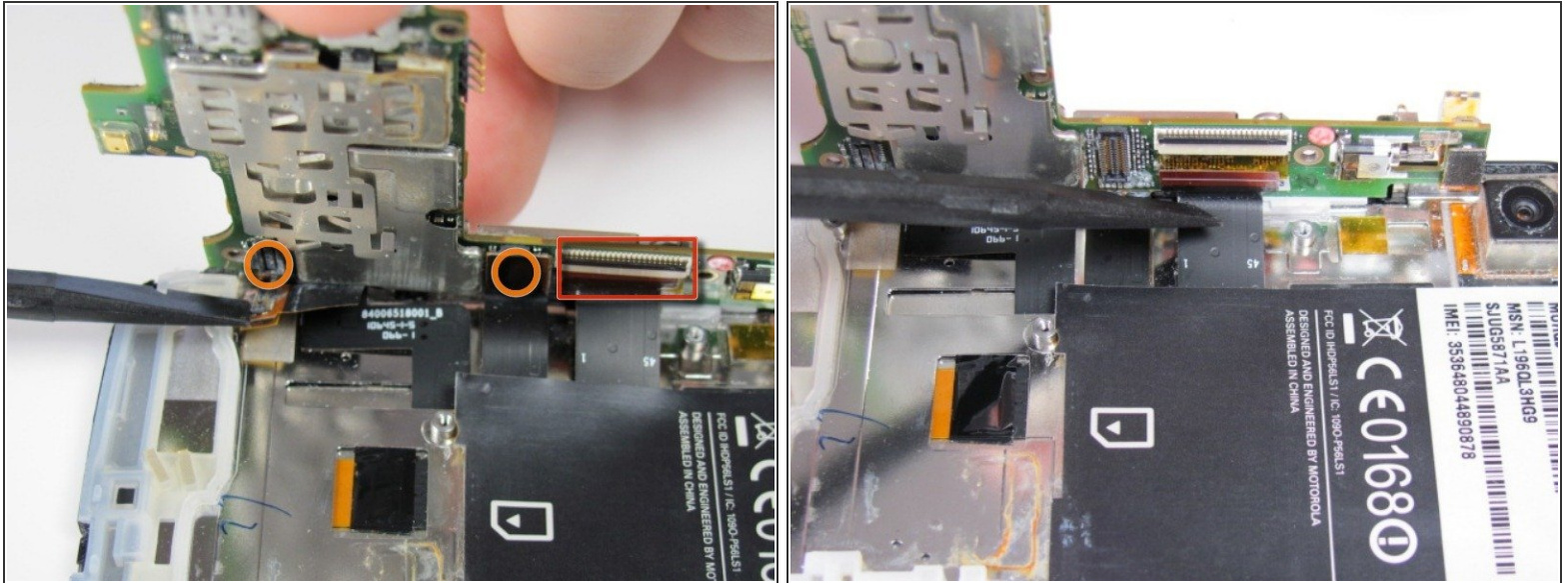
- Ease the antenna from out of its guide along the side of the phone
- Once the antenna is detached, remove the back case and the antenna from the phone
- ★ The antenna is soldered to the back case. Do not pull with too much force.

Step 9 — Motherboard



- To remove the motherboard, first dislodge the right side of the motherboard, where the external connections are located, from the rest of the phone.
- This can be done by placing a spudger in between the two ports on the phone, between the black plastic and motherboard, and prying out.
- The motherboard should be able to be easily lifted upwards after dislodging it.
- If the white rubber piece moves, replace it where it came from upon reassembly.

Step 10



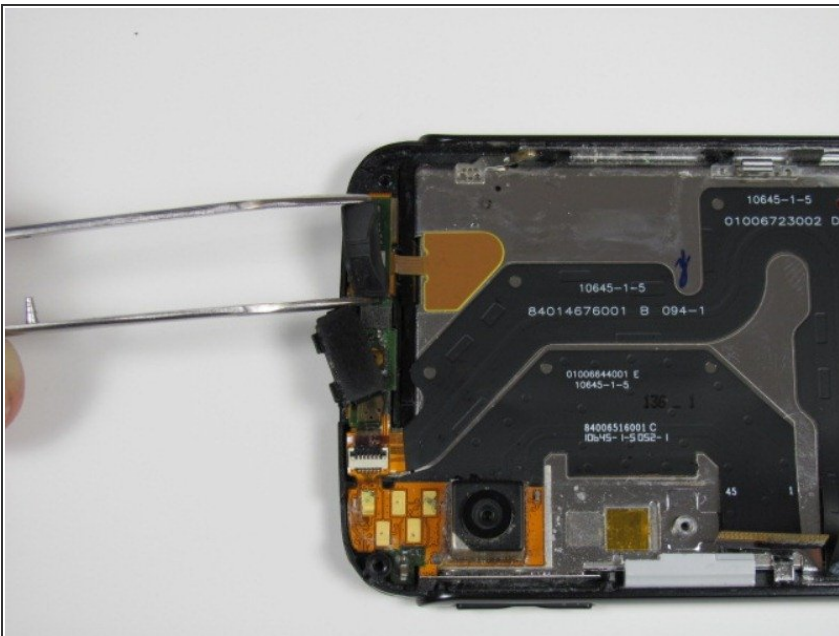
- First, several connections must be disconnected to completely separate the motherboard from the rest of the phone.
- The connection highlighted with a red box must be pulled down instead of out.
- Using the spudger tool, separate the two connections on the motherboard highlighted with orange circles by pulling them out.
- The black switch on top of this connection acts as a lock. Push it forwards to unlock the connection.

Step 11



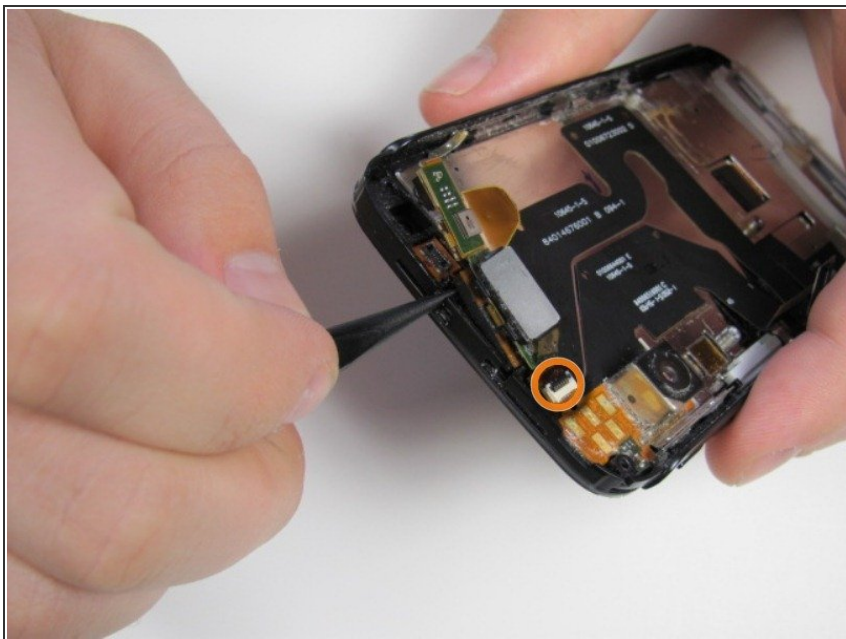
- After disconnecting the motherboard, there should be five distinct and separate parts of the phone: back cover, back case, front case, battery, and motherboard.

Step 12 — Top Speaker



- In order to get to the top speaker, first remove the rubber cover located directly over the speaker.
- The orange adhesive strip needs to be peeled off in order to remove the top speaker. This can be done using fingernails or the spudger tool.

Step 13



- Using the spudger, lift up from under the top speaker and it should slide easily out of place.
- Be careful when removing top speaker out of its housing because it is still connected to the phone. You must undo the connection indicated with the orange circle before complete removal.
- To undo the connector lift the black flap up - edge closest to the speaker - then the cable slides out

To reassemble your device, follow these instructions in reverse order.