



# Samsung Galaxy A3 2016 Battery Replacement

If your Galaxy A3 won't hold a charge you can...

Written By: Dominik Schnabelrauch



# INTRODUCTION

If your Galaxy A3 won't hold a charge you can use this guide to replace the worn-out battery. If your battery is swollen, [take appropriate precautions](#).

This guide involves removing the rear glass cover and the mid frame. You will need replacement adhesive to reattach the back cover to the phone.

Before disassembling your phone, discharge the battery below 25%. The battery can catch fire and/or explode if accidentally punctured, but the chances of that happening are much lower if discharged.



## TOOLS:

[iOpener](#) (1)  
[Suction Handle](#) (1)  
[iFixit Opening Picks \(Set of 6\)](#) (1)  
[Plastic Cards](#) (1)  
[Phillips #00 Screwdriver](#) (1)

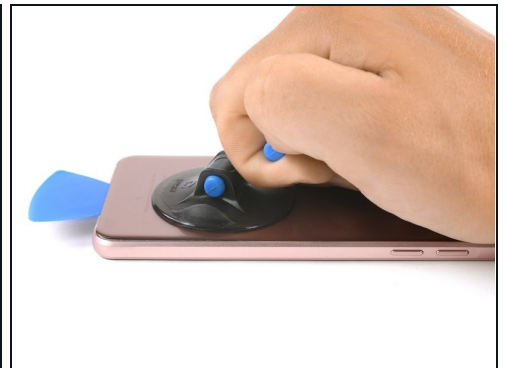
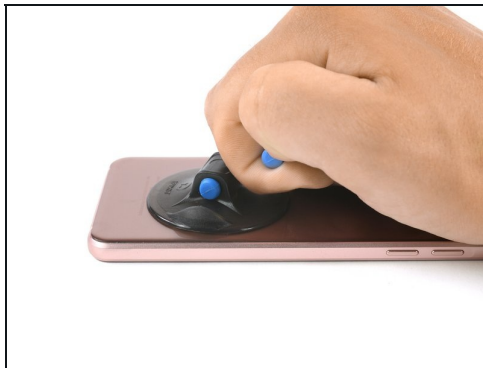


## PARTS:

[Tesa 61395 Double-Sided Tape](#) (1)

---

## Step 1 — Back cover



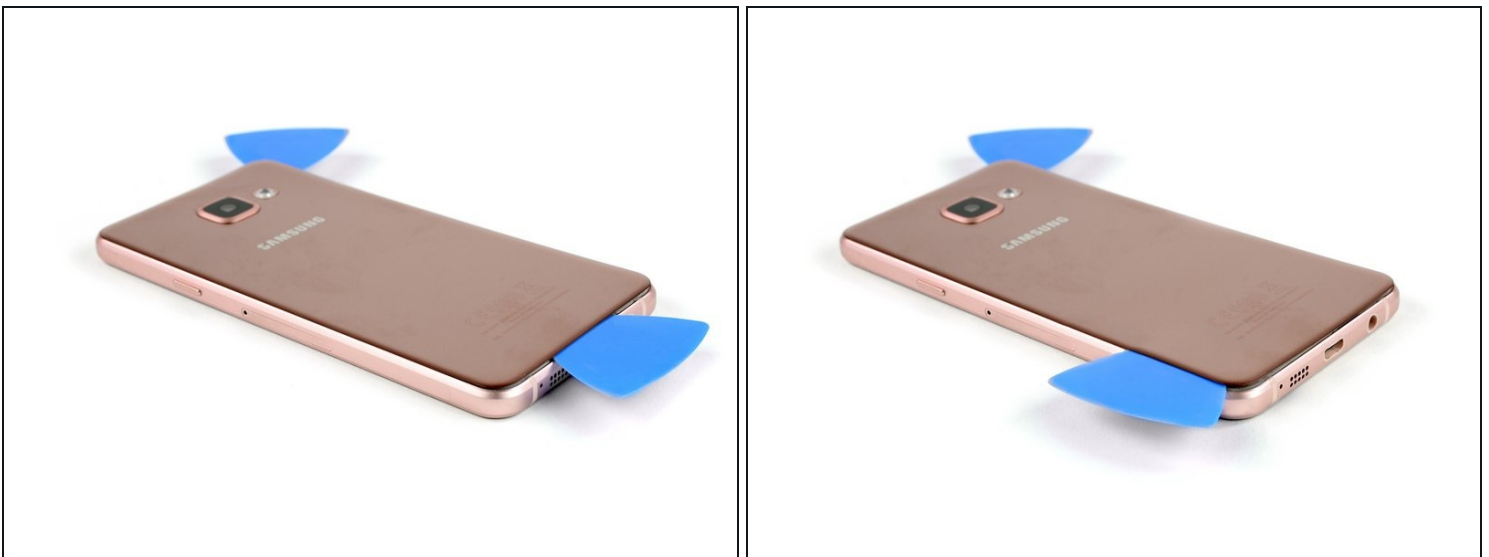
- Start by switching off your phone.
- [Take an iOpener](#) to heat up and soften the glue behind the back cover.
- Lift the bottom part of your back cover with a suction handle and insert an opening pick.

## Step 2



- Slide the opening pick up to the rear camera to separate the back cover from the frame.

## Step 3



- Insert a second opening pick and move around the other corner at the bottom part of the back cover.

## Step 4



- Move the second pick along the left side of the back cover to loosen the adhesive.
- Move around the upper left corner and loosen the adhesive above the rear camera.
- After loosening all the edges and sides of the back cover [use an iOpener](#) to loosen the adhesive underneath the center of it.

## Step 5



- Insert a [plastic card](#) at the bottom and slide it underneath the back cover.
- Separate the glue until you reach the rear camera.
- Now you can slowly lift up the back cover and finally remove it.

## Step 6 — Battery



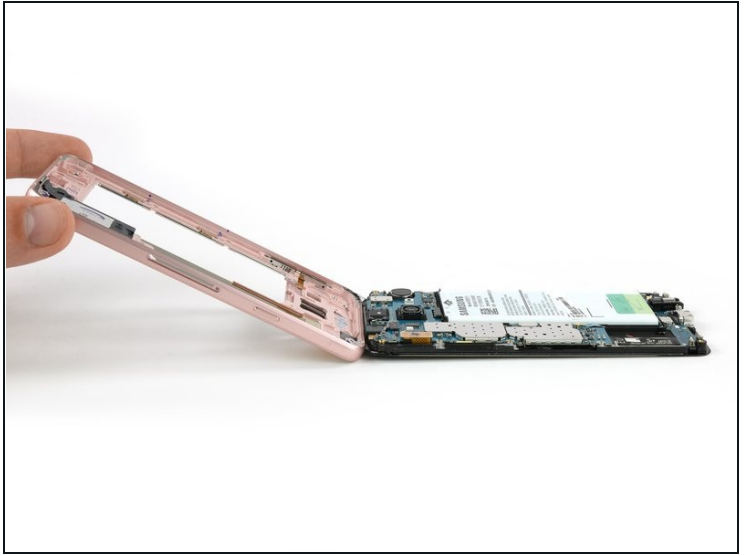
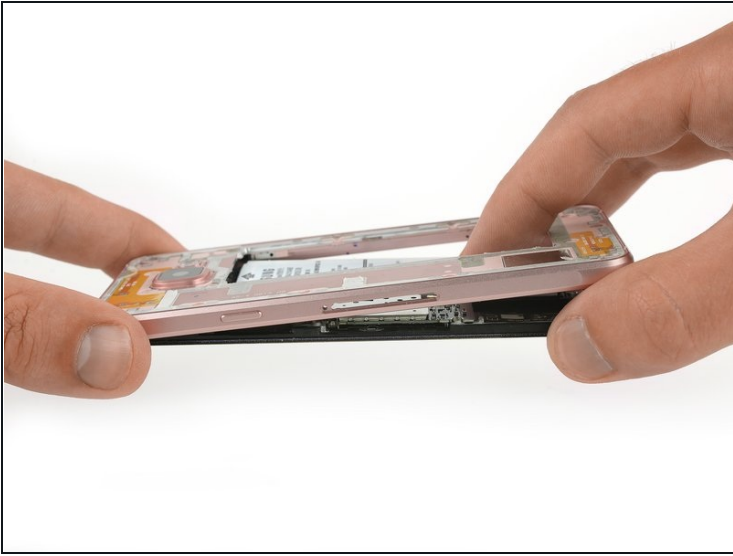
- Remove the SIM card tray.
- Remove the 16 Phillips #00 screws on the midframe.

## Step 7



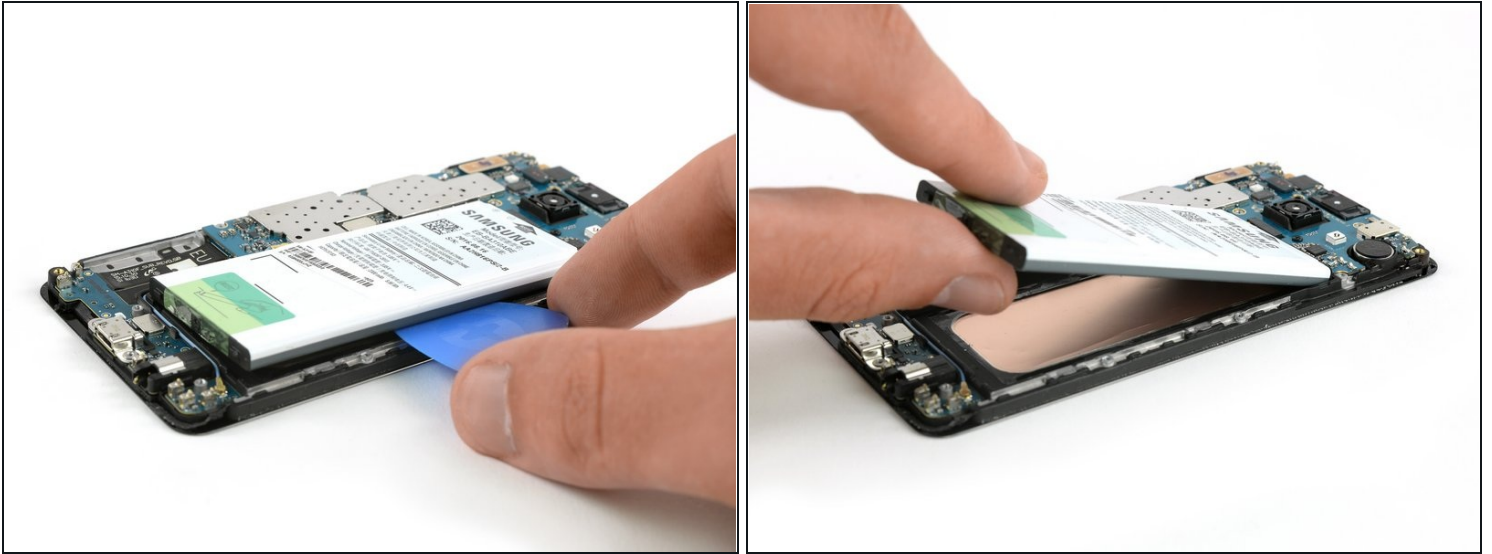
- [Use an iOpener](#) to loosen the adhesive around the mid frame.

## Step 8



- Push the exposed part of the battery away from the midframe to separate the components.
- Remove the midframe.

## Step 9



- Insert an opening pick between the battery and the frame. Slide along the battery to separate the adhesive.

⚠ Don't go too deep with the opening pick to not damage the display underneath.

- Remove the battery.

☒ You may need to apply new adhesive when installing the new battery.

---

To reassemble your device, follow these instructions in reverse order. Reapply adhesive where necessary.