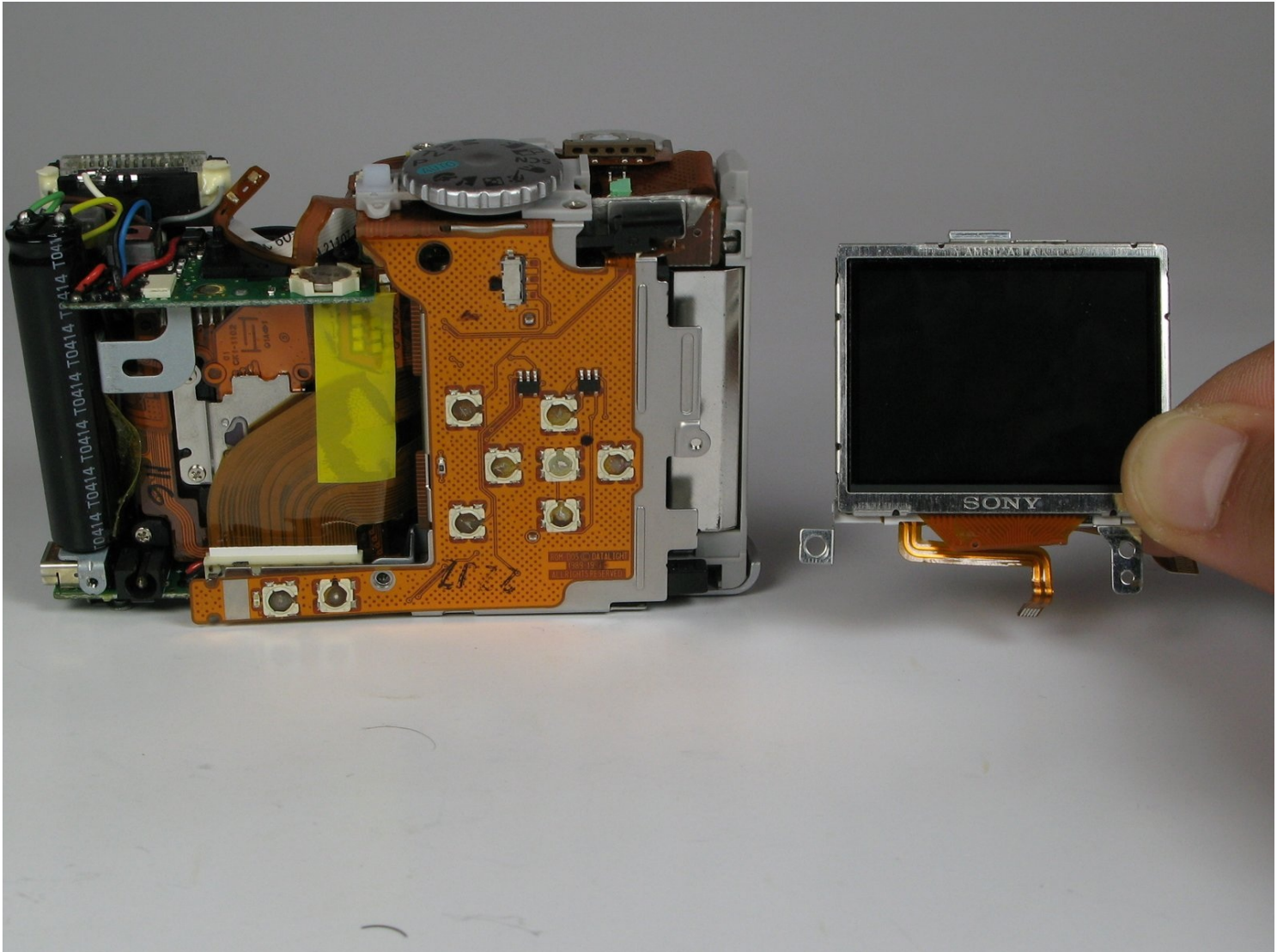




# Canon PowerShot A75 LCD Screen Replacement

Use this guide to replace the Canon PowerShot...

Written By: Austin Fox



# INTRODUCTION

Use this guide to replace the Canon PowerShot A75's LCD screen.

## TOOLS:

Phillips #00 Screwdriver (1)

Tweezers (1)

## Step 1 — Batteries



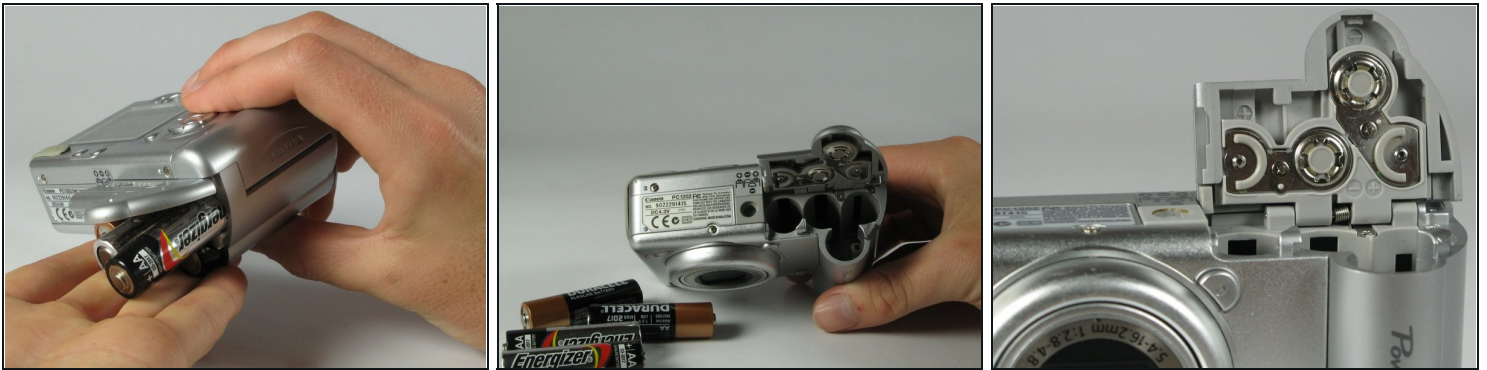
- Turn the camera over and locate the "BATT OPEN" sliding switch.

## Step 2



- Slide the switch to the right.
  - ① The battery cover should slide down and spring open.

### Step 3



- Remove the 4 AA batteries.
  - ⓘ Watch for the orientation of the batteries as they slide out.
  - ☑ The battery orientation is shown under the battery flap itself and on a sticker next to the battery flap.

### Step 4 — Casing



- Remove the three 2.5mm screws on the bottom of the camera.

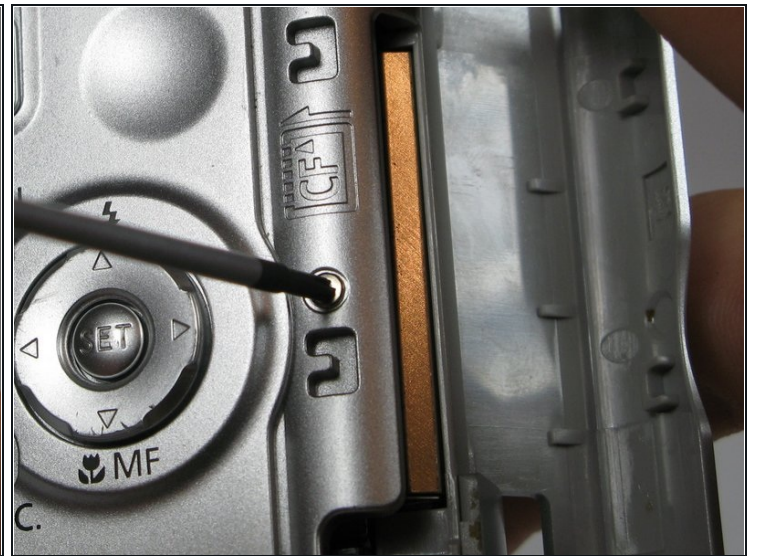


## Step 5



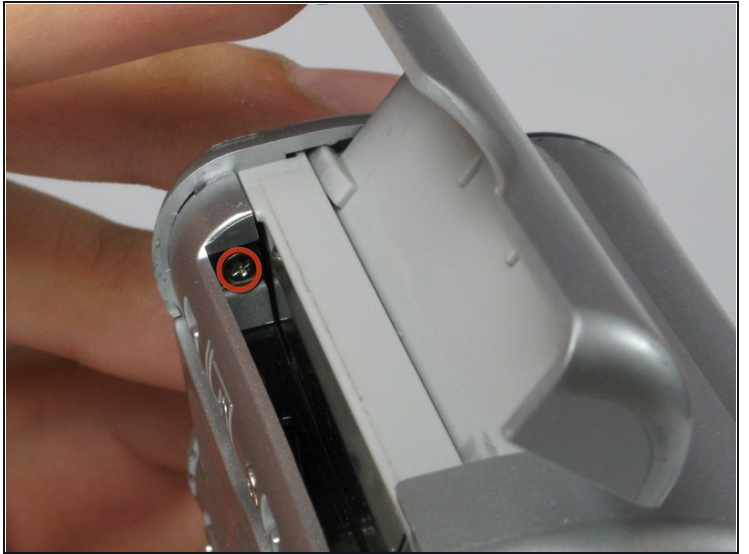
- Remove the 3.8mm screw underneath the flap that covers the A/V port.

## Step 6



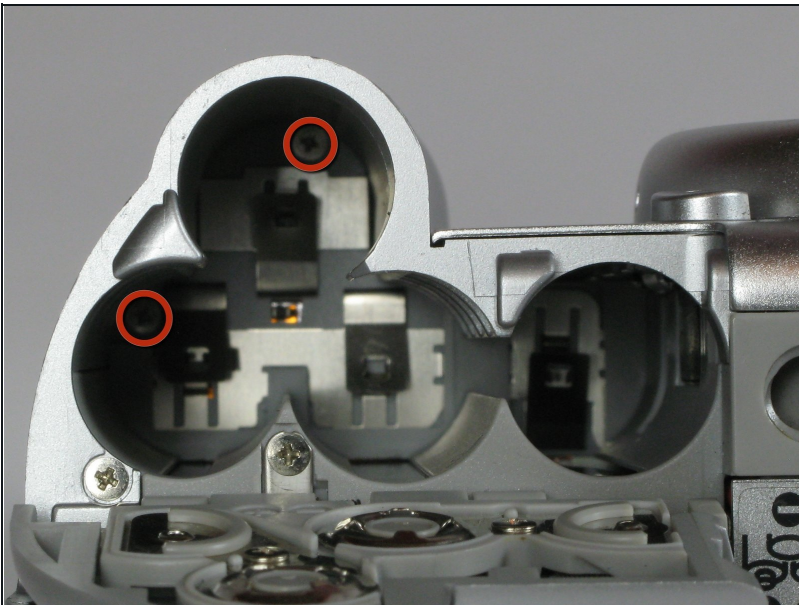
- Remove the 2.4mm screw located underneath the cover of the memory card slot.

## Step 7



- Open the memory card slot by sliding it laterally until you hear a click.
- Remove the 5.9mm screw in the upper corner of the memory card slot.

## Step 8



- Remove the two 4.1mm screws at the bottom of the battery flap.



## Step 9



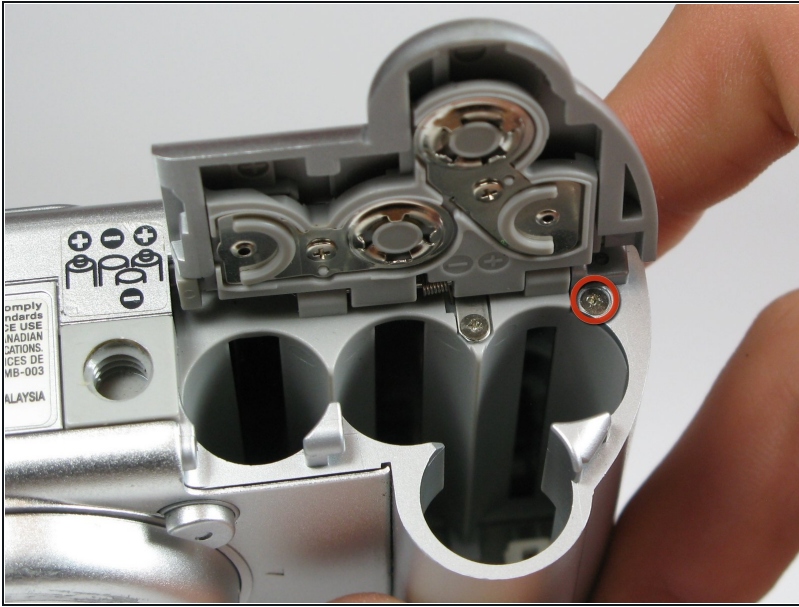
- Lift the shutter button and speaker part from the top of the camera.  
⚠ **DO NOT** pull the part too hard because there is a plug connecting the speaker to the camera.

## Step 10



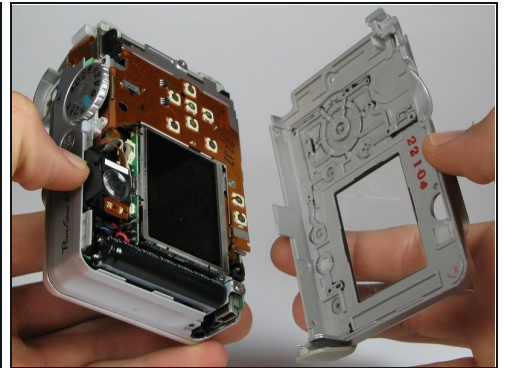
- Using a pair of [tweezers](#), grab the plug that connects the speaker to the camera and gently pull it out.

## Step 11



- Remove the rightmost 4.2mm screw underneath the battery cover, not the center screw.

## Step 12



- Separate the back casing and front casing of the camera using your hands.
  - ① Pulling the two halves apart can be difficult, especially at the top. Use a moderate amount of force.

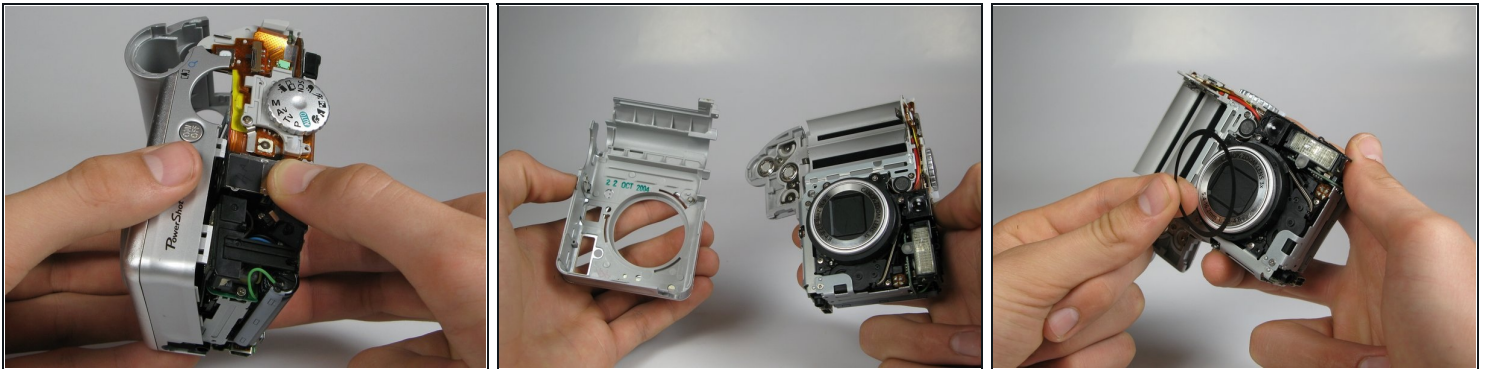


## Step 13



- On the front of the camera, press the button on the lower left of the lens.
- Twist the outer lens casing counter-clockwise and slide it out.

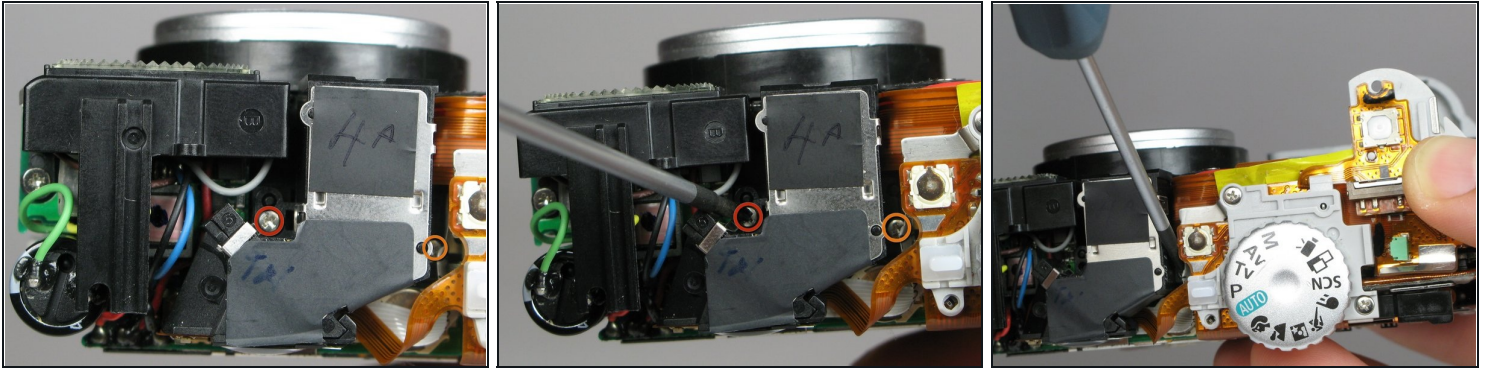
## Step 14



- Take off the front casing.
- ☒ There is a black rubber washer around the lens that comes out after you take the casing off. Make sure to replace it when putting the camera back together.

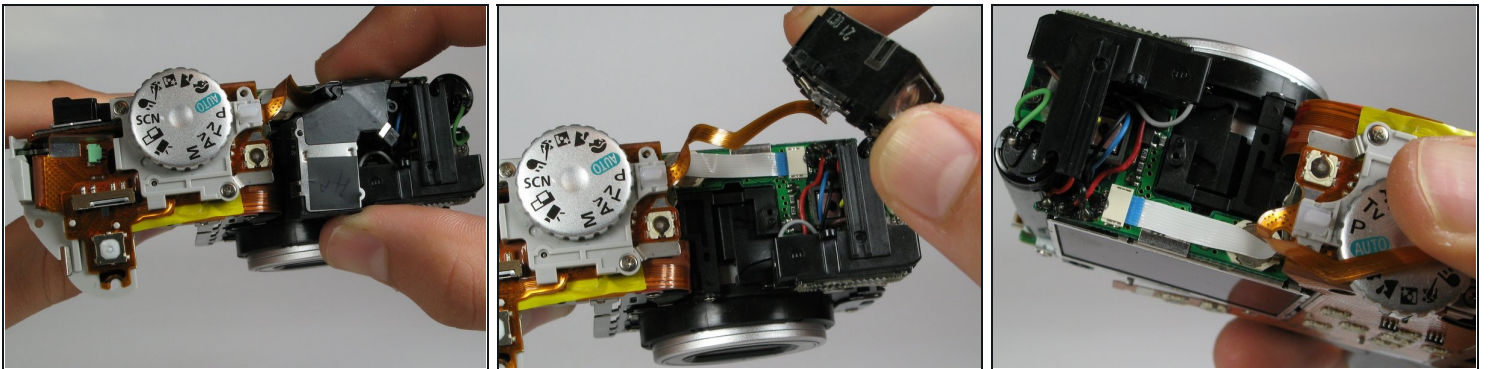


## Step 15 — LCD Screen



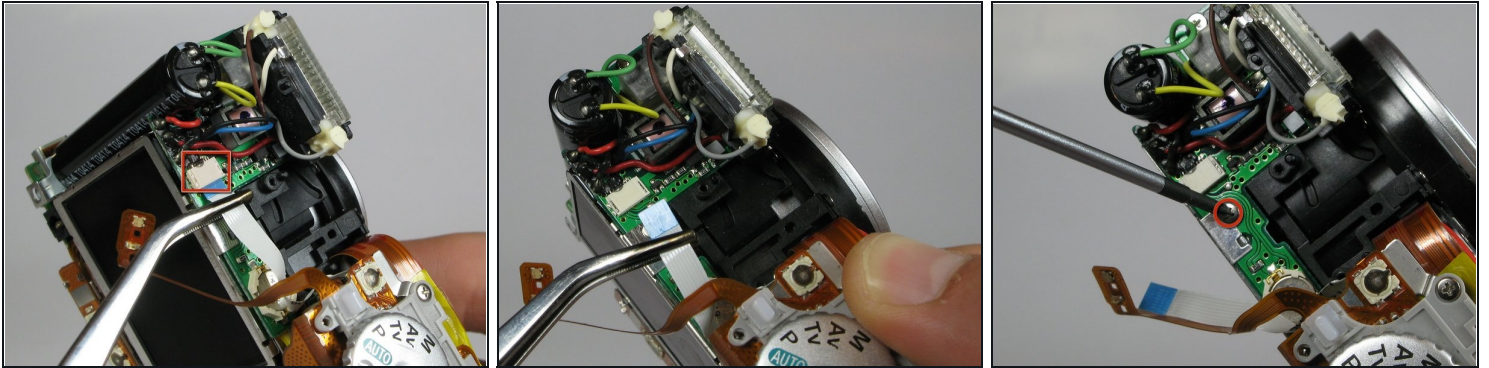
- Remove the 4.4mm screw directly behind the eyepiece on the top of the camera.
- Remove the 4.3mm screw to the right of the eyepiece housing in the crack in between the eyepiece and a ribbon cable on top of the camera.

## Step 16



- Gently wiggle the eyepiece out of its place. It should snap out of place.
- ⓘ There should be a white ribbon cable underneath attached to the motherboard.

## Step 17



- Locate the white cable on top of the camera where the eyepiece was.
- Using [tweezers](#), grasp the white cable as close to the connection point as possible and gently remove the cable.
  - ⓘ The cable should just slide out with a slight tug.
- Remove the 2.9mm screw directly underneath the white cable.

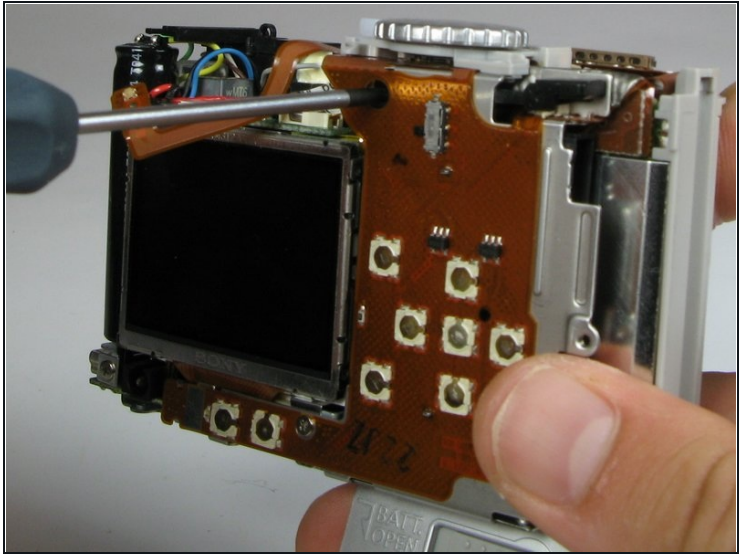
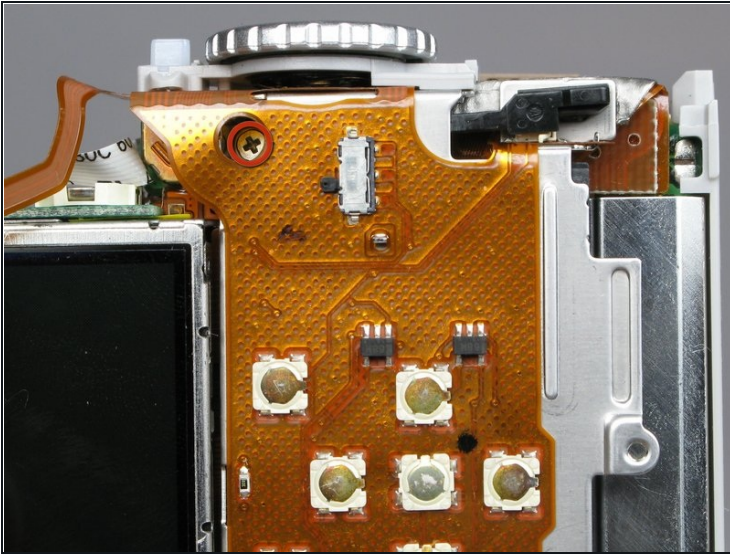
## Step 18



- Remove the 4.2mm screw directly under the battery flap.

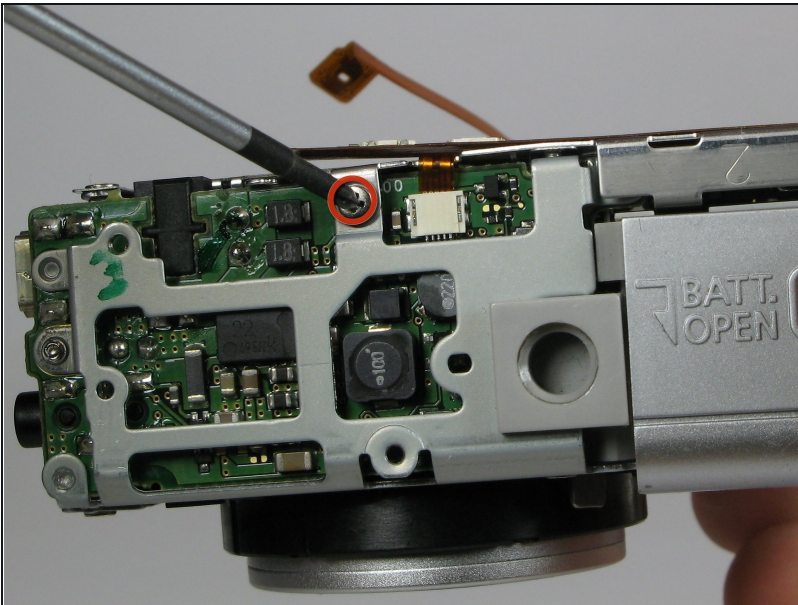


## Step 19



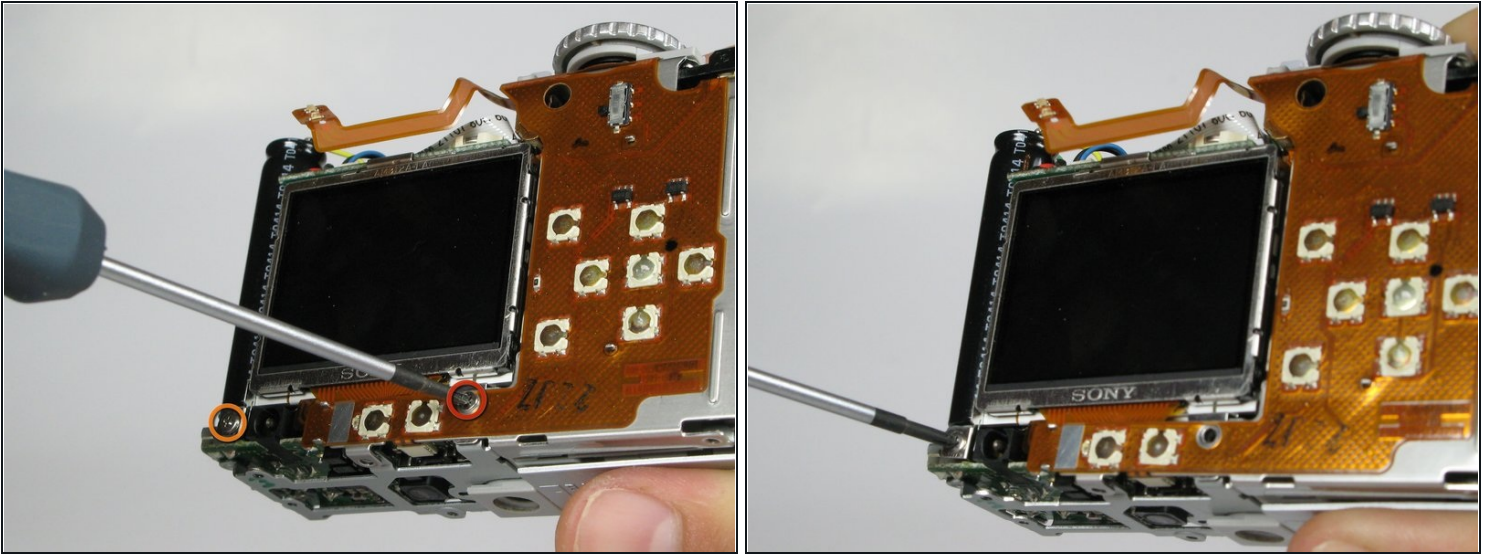
- Remove the 3.4mm screw inside a deep hole on the back copper panel beneath the circular mode switcher.
  - ⓘ This screw is a little difficult to get out.

## Step 20



- Remove 2.5mm the screw in the silver housing on the bottom of the camera. This screw is holding the back panel in.

## Step 21



- Remove the 3.4mm screw near the bottom of the back face of the camera on the copper ribbon.
- Remove the 2.9mm screw on the back face of the camera in the bottom left corner.

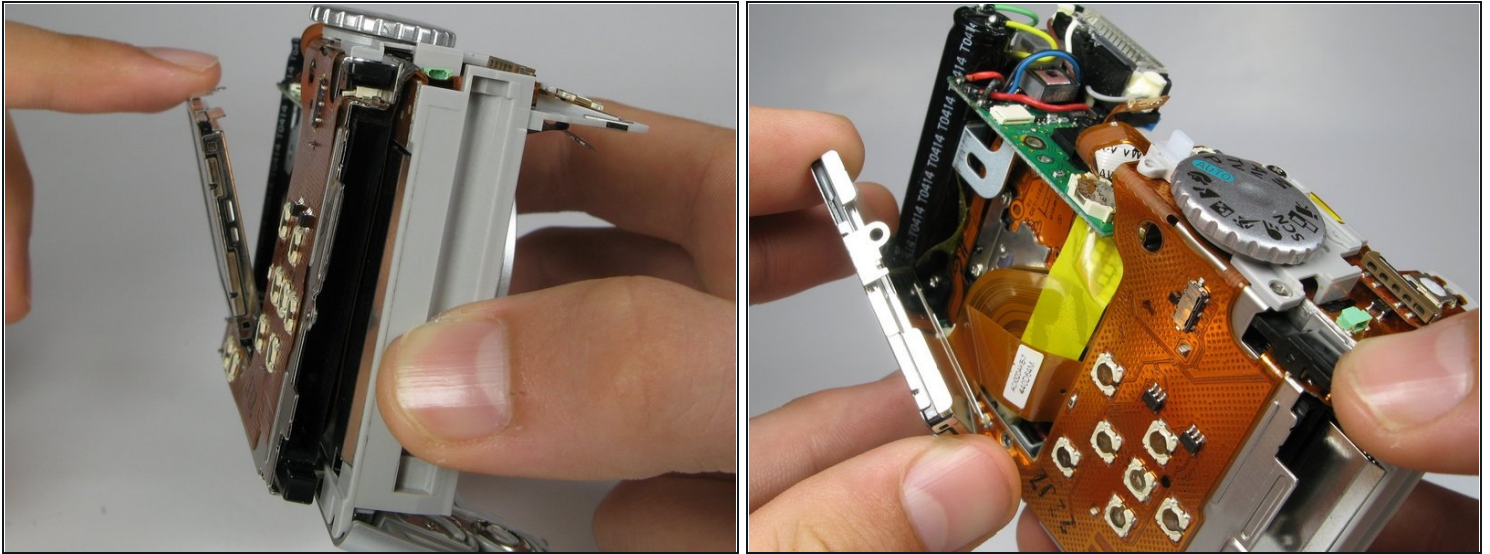
## Step 22



- Locate the copper ribbon cable attaching the LCD screen to the bottom motherboard.
- Grasp the cable near the white connector and gently remove the cable.

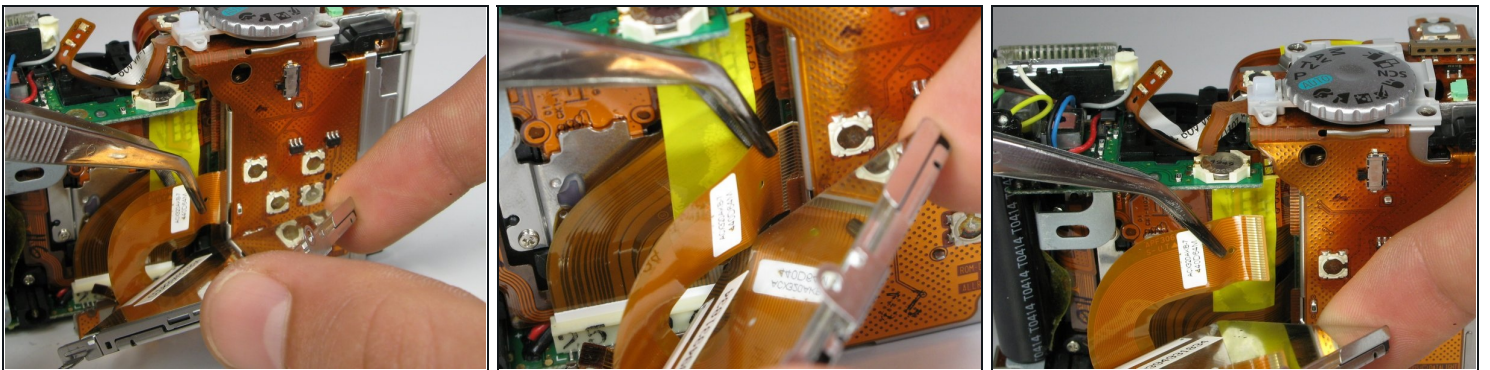


## Step 23



- Gently pull back the LCD screen to around 45 degrees from the back of the camera.  
⚠ Do not pull the back panel too far, it is connected to the top of the camera with ribbon cables and is not meant to separate from the camera.
- Locate the larger ribbon cable connecting the screen to the body of the camera.

## Step 24



- Gently grasp and pull the cable from the motherboard. The cable should easily slide out.  
① This ribbon cable may be easier to remove using your hands instead of the tweezers.
- The LCD should now be out after the cable is removed.

---

After all the steps are done, you can make any necessary repairs to the LCD screen. To reassemble your device, follow these instructions in reverse order.