

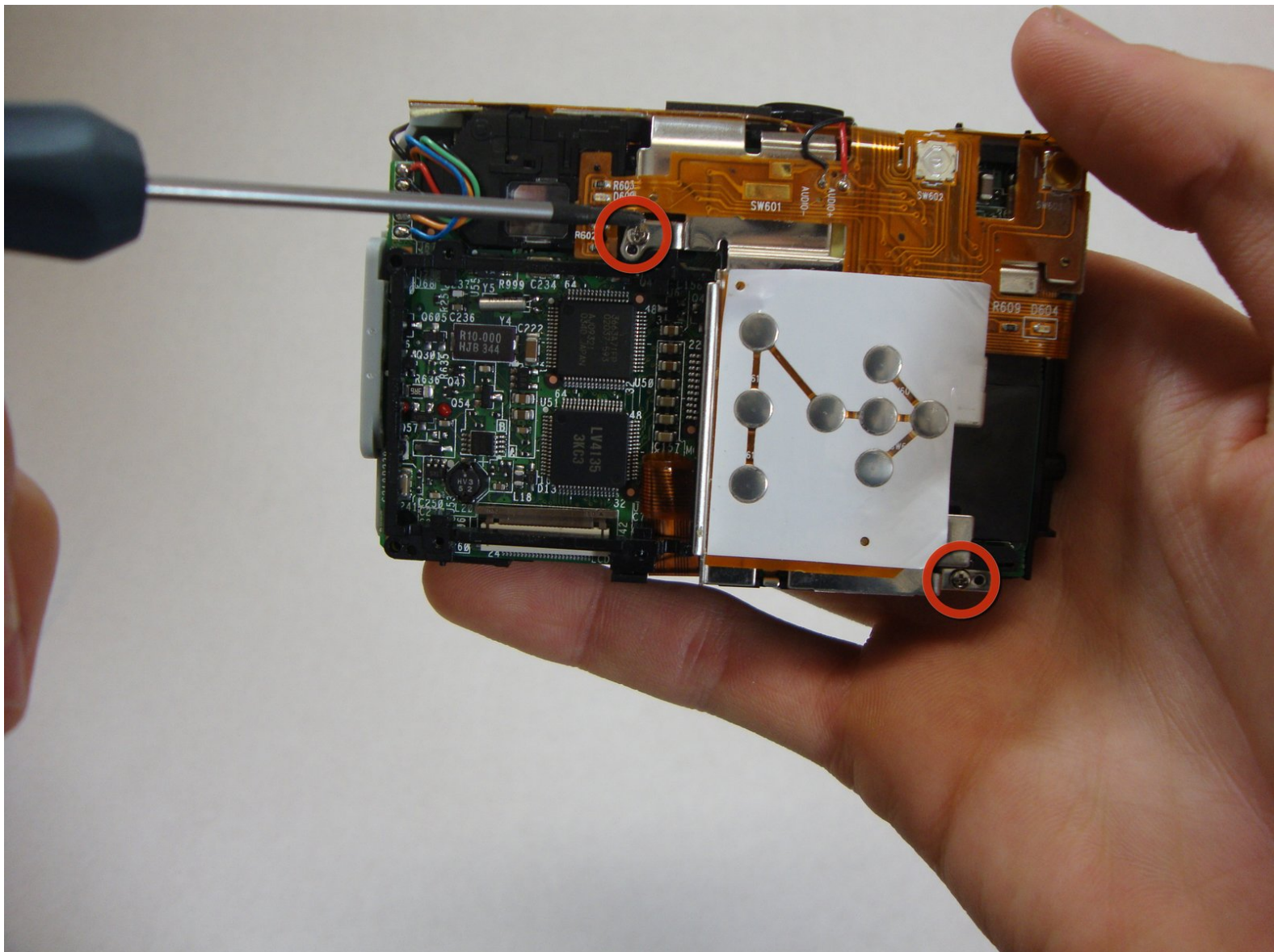


HP Photosmart 935 Viewfinder Digital Camera

Mirror and Lens Replacement

This guide will instruct the user on how to...

Written By: Nick Oleskowicz



INTRODUCTION

This guide will instruct the user on how to remove and replace the viewfinder mirror and lens on the HP Photosmart 935 Viewfinder Digital Camera. The following instructions can be used as an installation guide for a new viewfinder mirror and lens.

TOOLS:

- [Tweezers](#) (1)
 - [Phillips #00 Screwdriver](#) (1)
-

Step 1 — Batteries



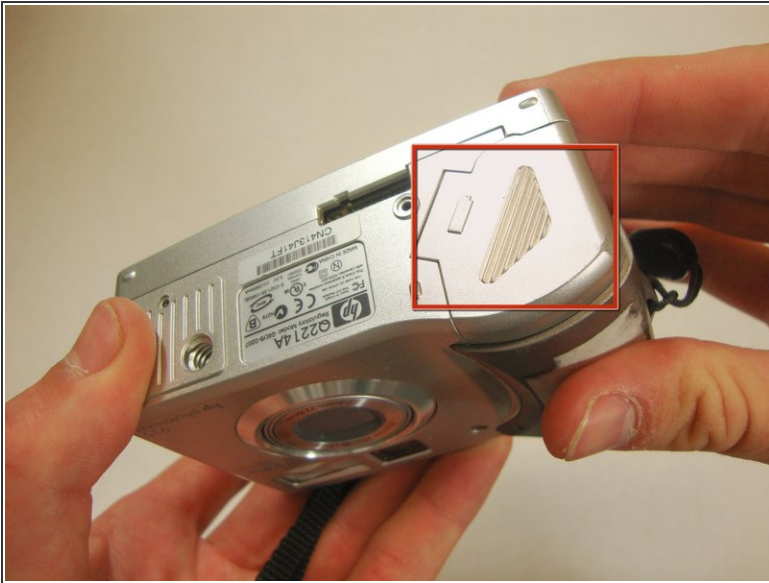
- Flip the camera over so the bottom of the camera is facing you.

Step 2



- Turn the mode dial to the OFF position.

Step 3



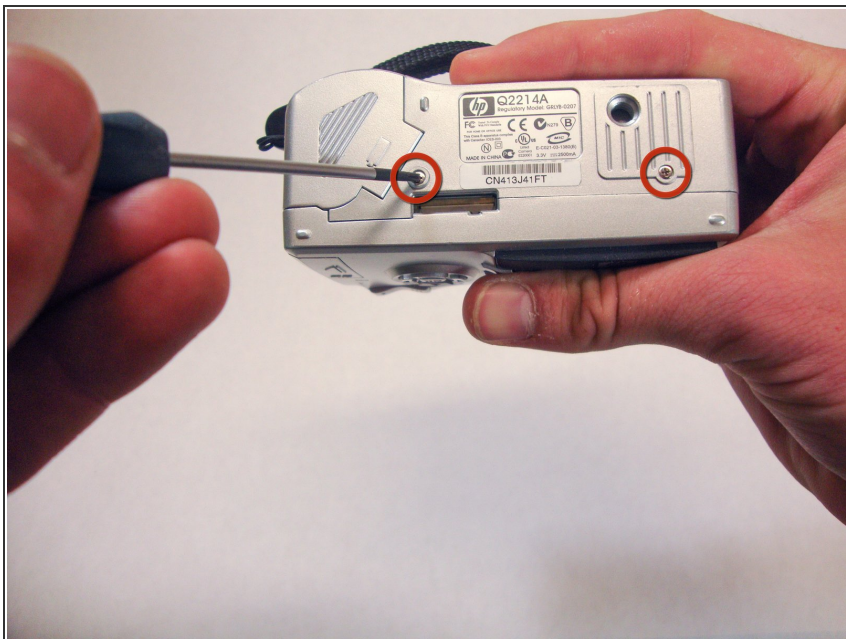
- Slide the bottom cover in the direction of the arrow to open it.

Step 4



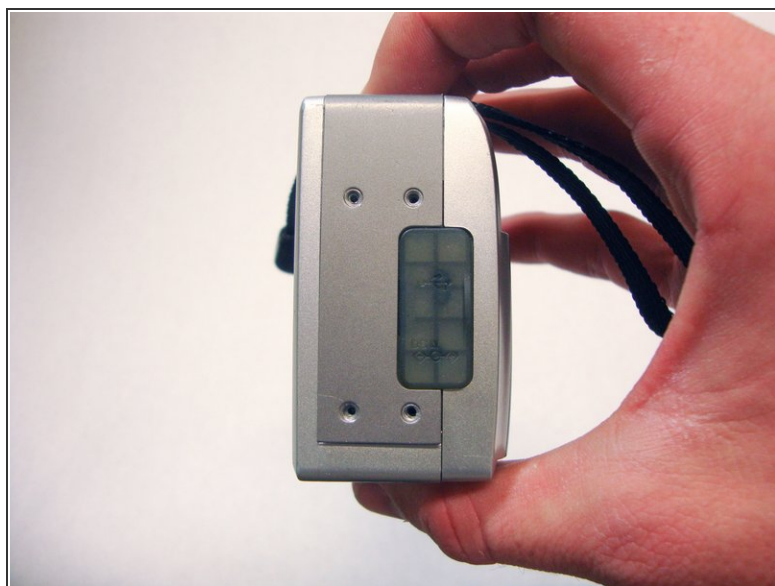
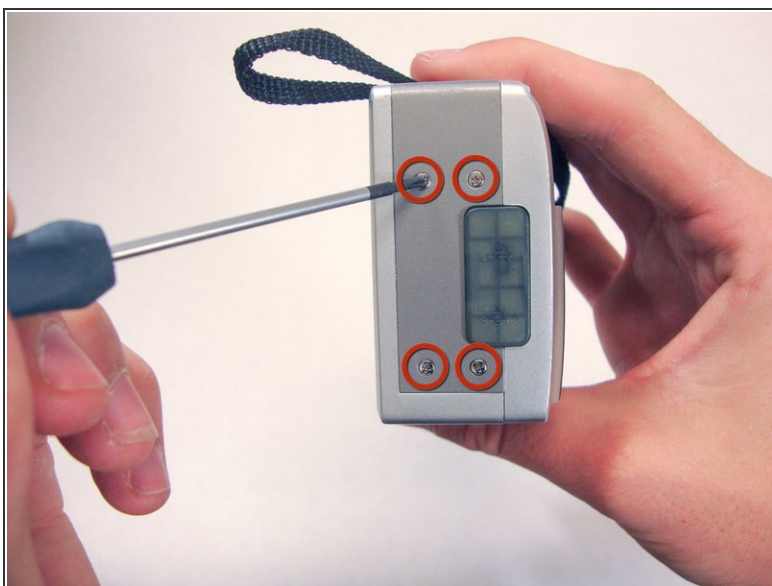
- Pull out the batteries.

Step 5 — Plastic Casing



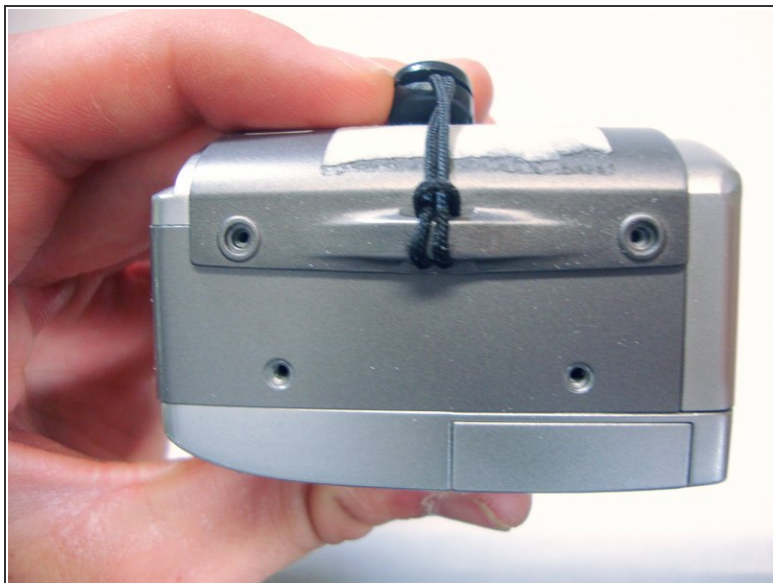
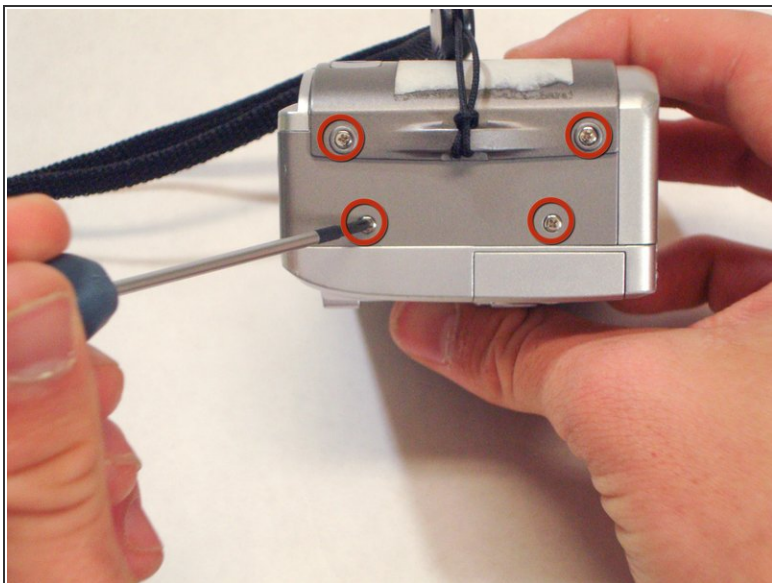
- Use a Phillips #00 screwdriver to remove the two 4.7 mm screws in the bottom of the plastic casing.

Step 6



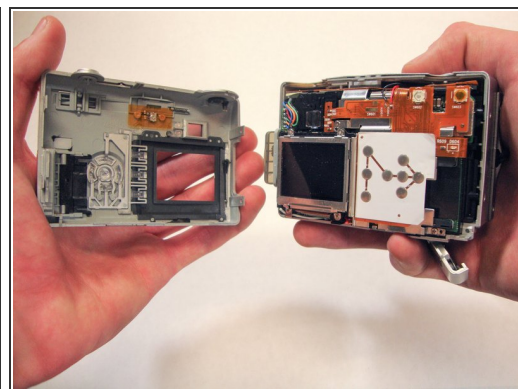
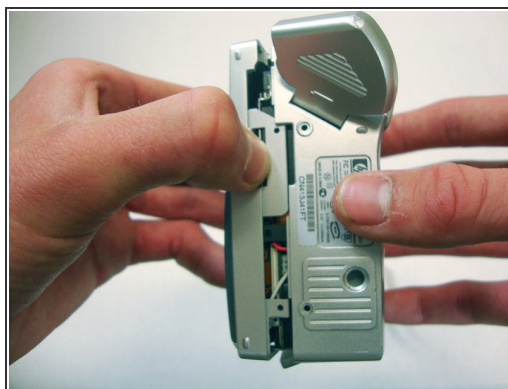
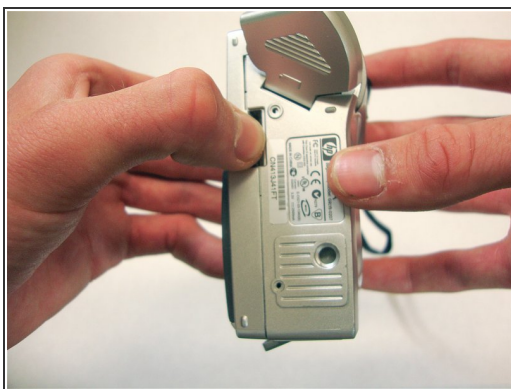
- Remove the four 4.7 mm screws on the left side of the camera.

Step 7



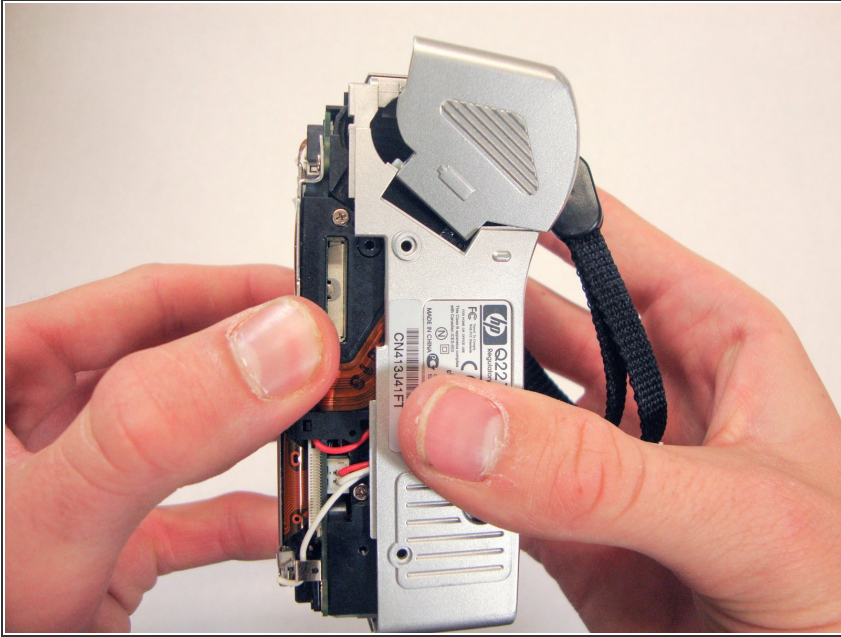
- Remove the four 4.7 mm screws on the opposite side of the camera.

Step 8



- Use your thumbs to pry the case apart.
- ⓘ It is easiest to pry the case apart if you start at the bottom.
- ⓘ The case should come apart with minimal effort. If it doesn't, you can use a spudger or plastic opening tool to pry it open.

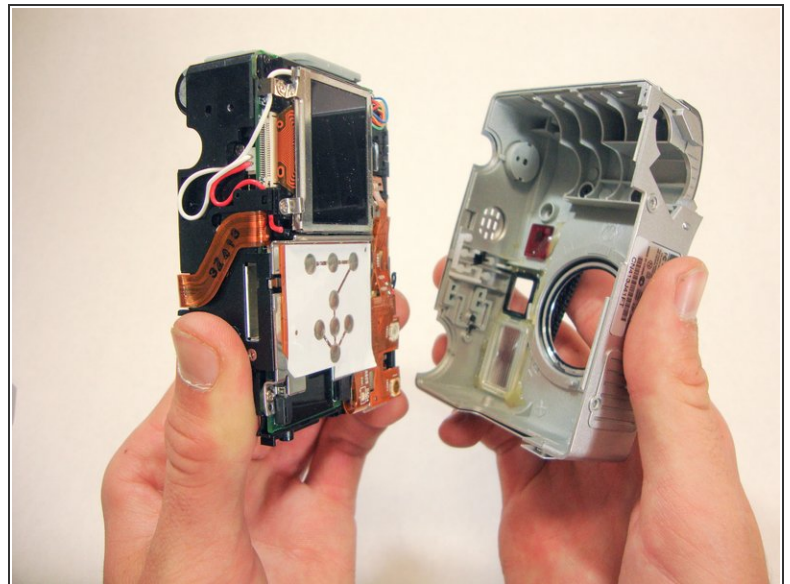
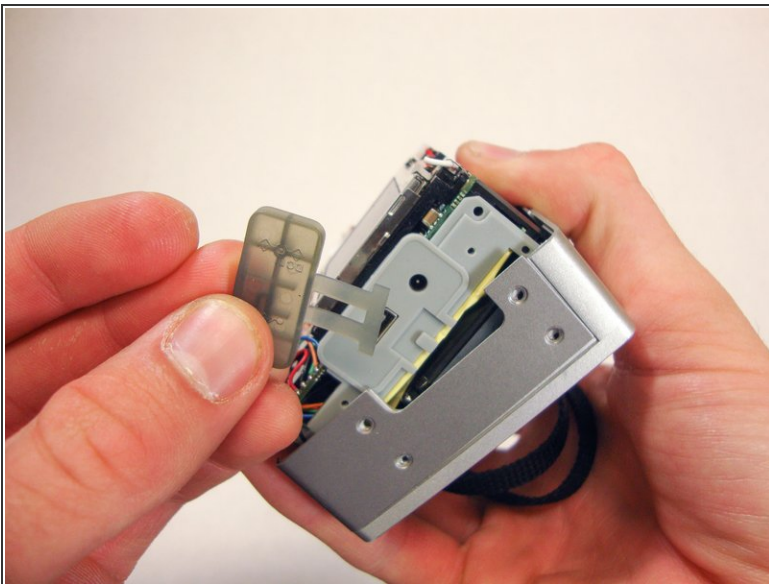
Step 9



⚠ This step requires a significant amount of force.

- Pull the bottom half of the inner camera out of the case by half an inch. This may be difficult.

Step 10

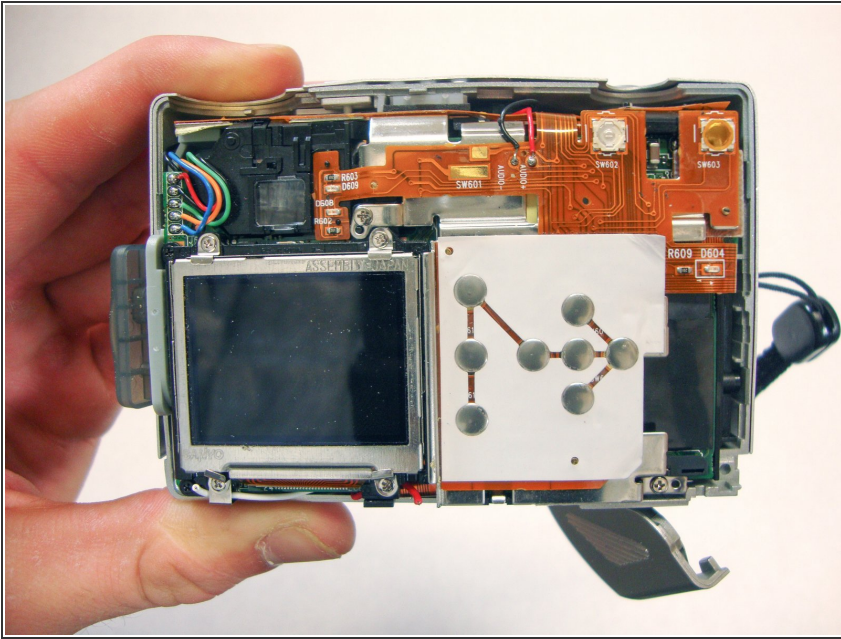


⚠ While pulling the camera out of the case, note the small soft plastic cover on the side. This cover will detach from the rest of the device.

- Once the bottom of the inner camera is pulled out, pull the device out completely.
- i** Use a firm grasp when removing the device from the case for stability and control.

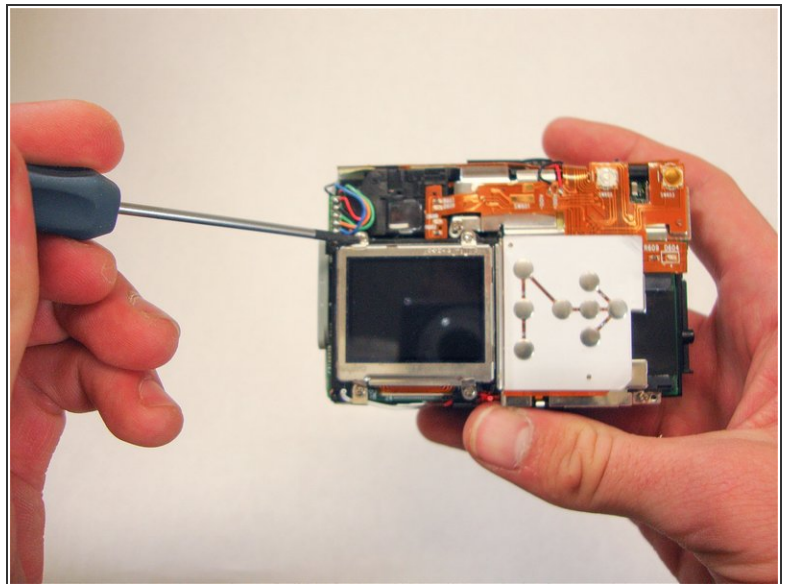
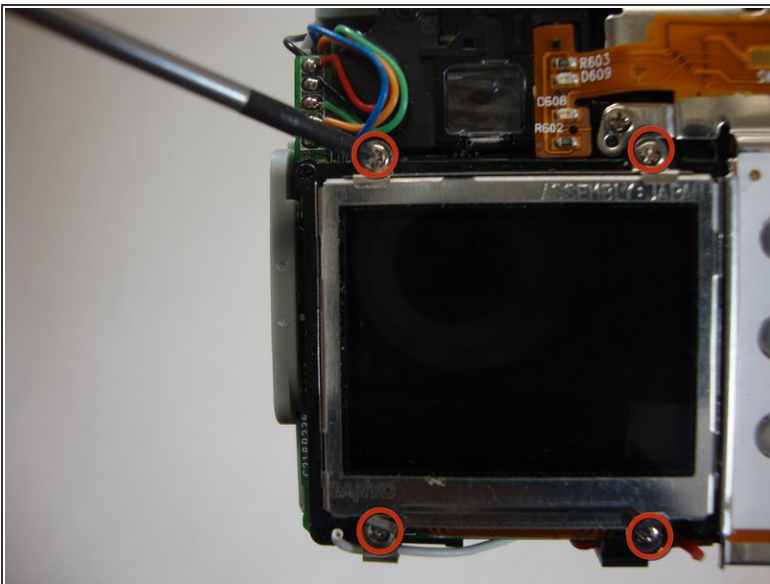
This document was generated on 2023-01-13 10:21:32 PM (MST).

Step 11 — LCD Screen



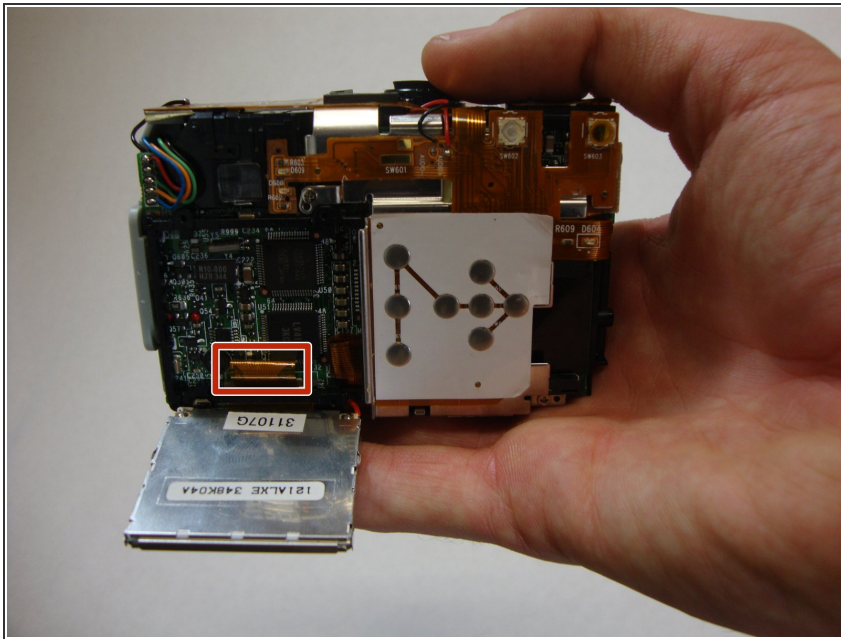
- Orient the camera so that the LCD screen is facing you.
- ❗ If case is still on, remove it by following the Plastic Casing Installation Guide found in the previous steps.
- ❗ Removing the casing completely is crucial to completing this guide.

Step 12



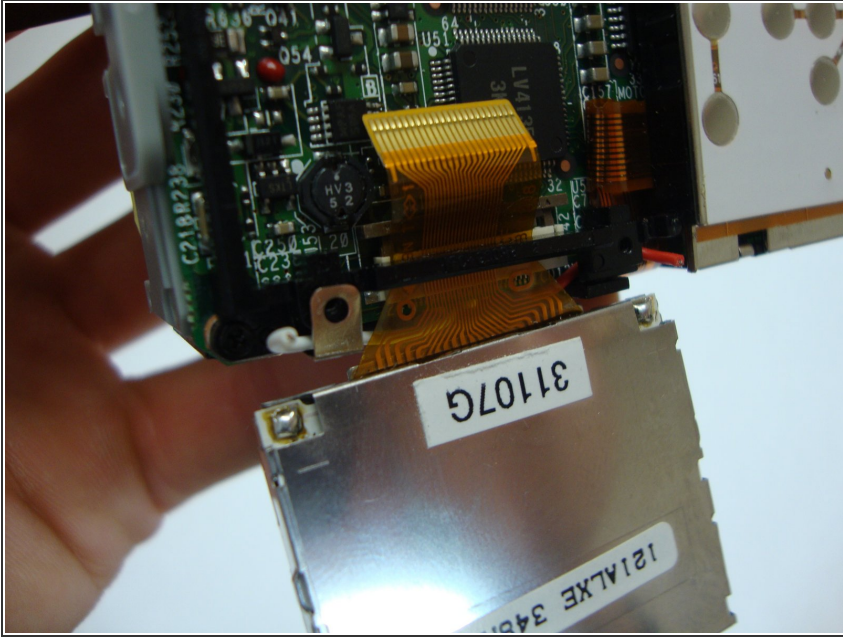
- Using a Phillips #00 remove the four 4.40 mm screws that secure the LCD screen to the frame.

Step 13



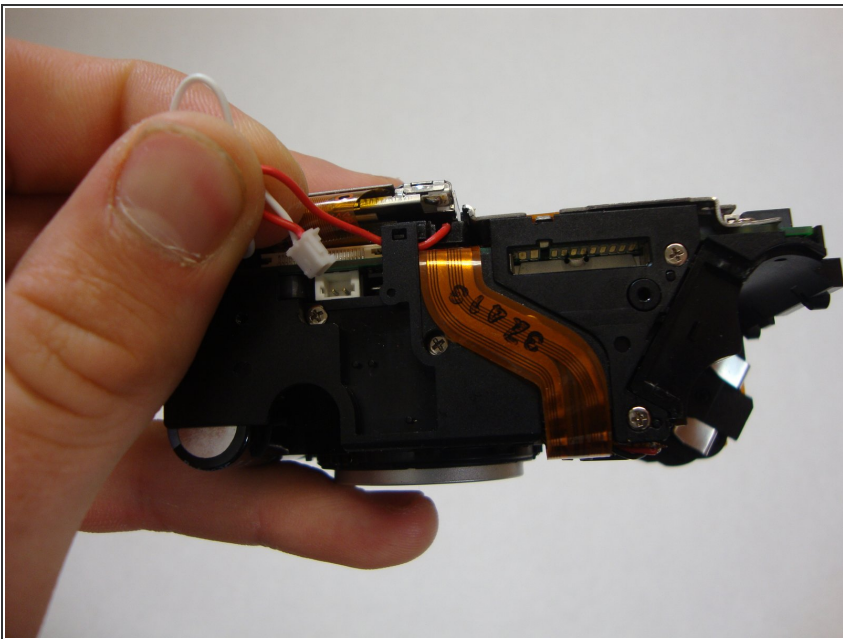
- Allow the LCD screen to flip down. This will expose the electric strip that connects the screen to the camera.

Step 14



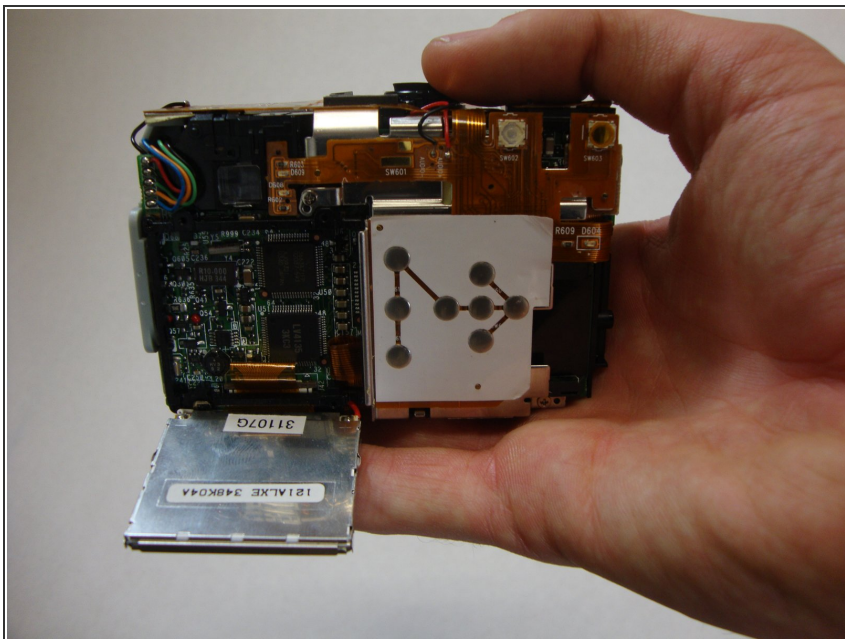
- ① Look for where the yellow electric strip is attached to the camera. You will find a plastic grey bar and a white base holding this strip in place.
- Push the grey bar away from the white base. This will release the yellow electric strip and free the LCD screen from the camera.

Step 15



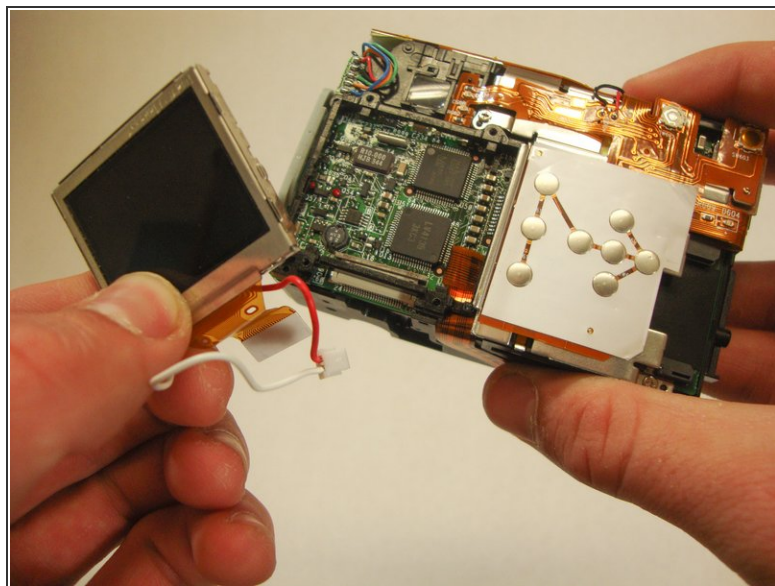
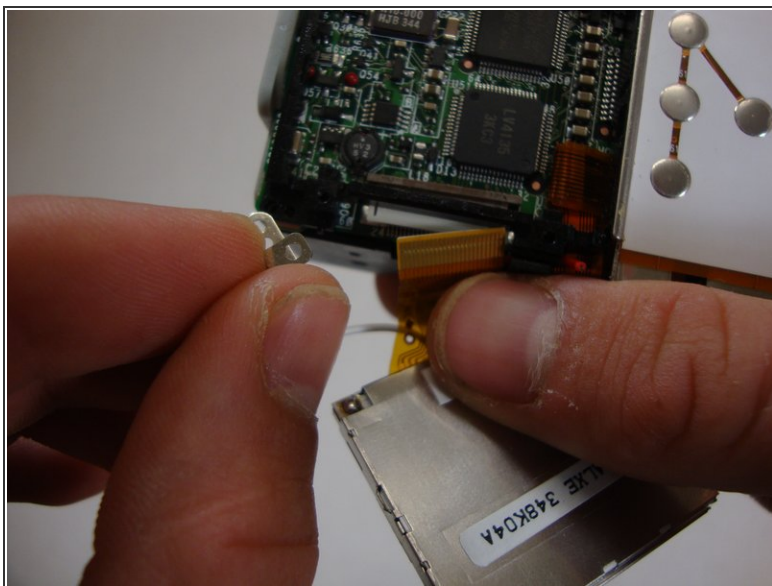
- Unplug the connected red and white wires. They will come out with the small white casing.

Step 16



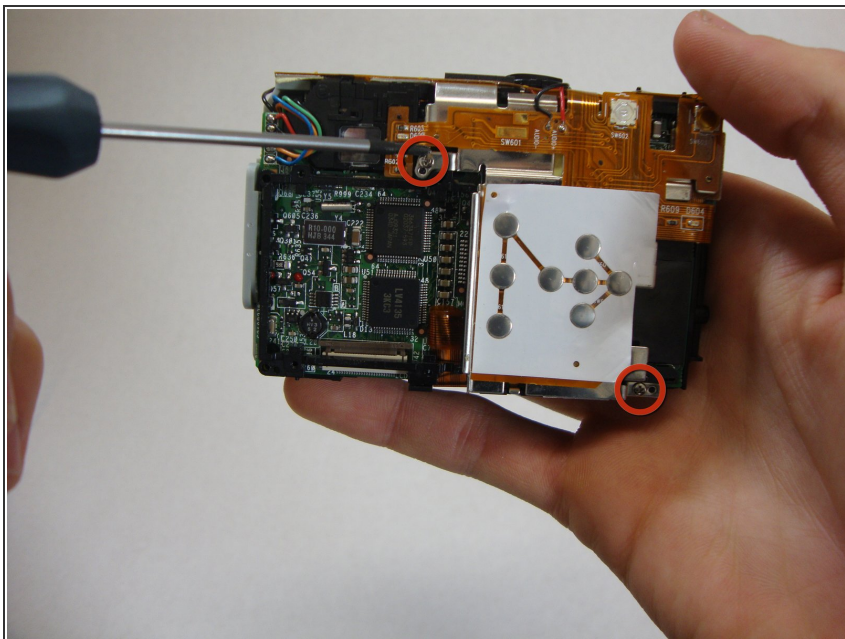
- Flip camera so that the lens is facing away from you. You should be looking at the LCD screen.

Step 17



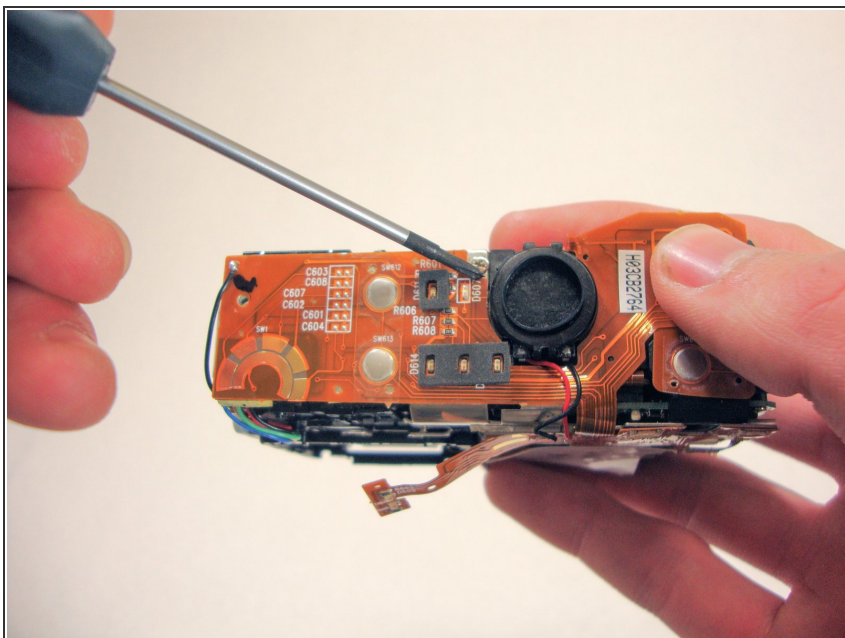
- Remove the bottom left LCD mounting frame screw. The screen should come loose after the screw is removed.
- Remove the LCD screen from the camera. Make sure that the electric strip comes out with screen.

Step 18 — Viewfinder Mirror and Lens



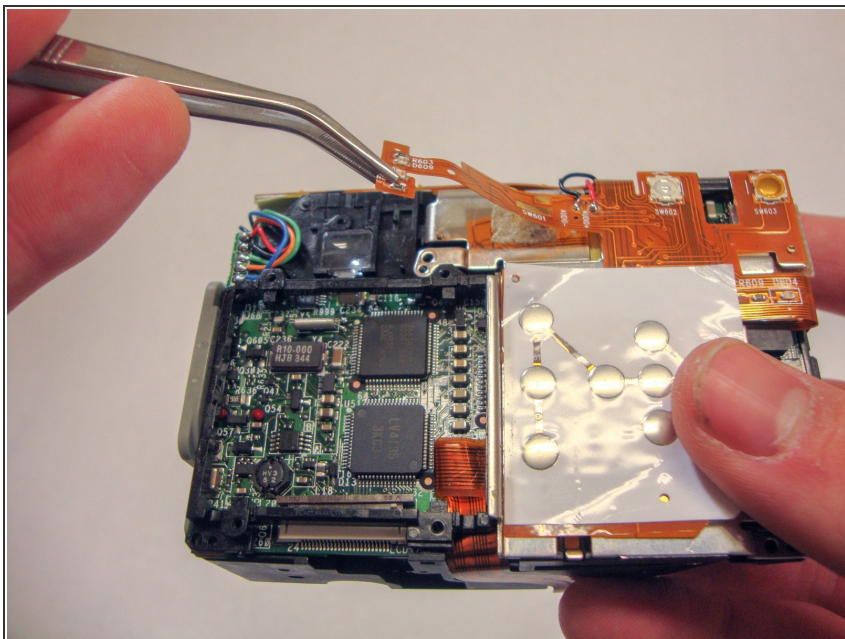
- Using a Phillips #00 screwdriver, remove the two screws securing the electric strip casing on the back of the camera.

Step 19



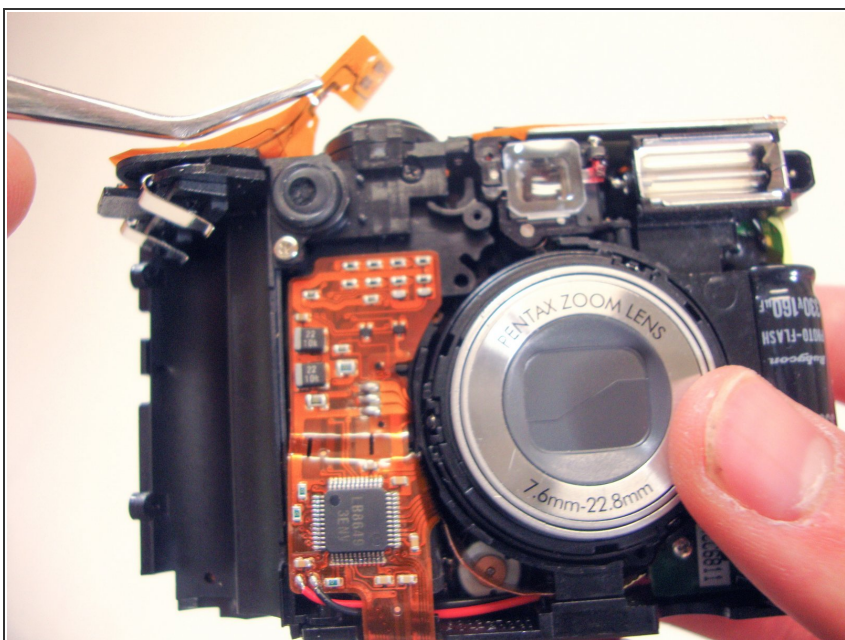
- On the top of the camera where the shutter button is located, remove the screws located near the speaker that secure the electric strip casing.

Step 20



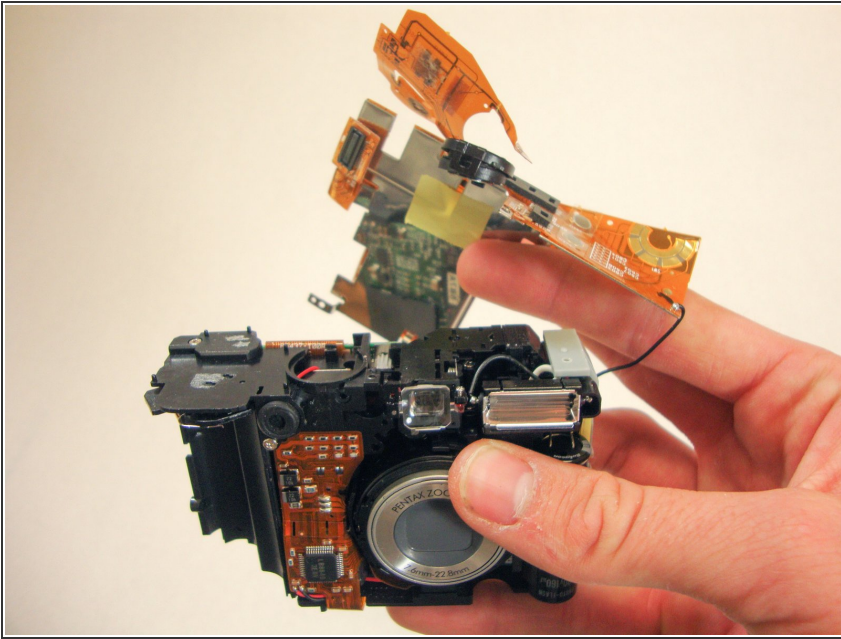
- Turn the camera over to the side that once housed the LCD screen. Locate the electric strip near the top of the camera.
- Holding the camera securely, gently pull the end of the electric strip off of the back of the camera using a pair of tweezers.

Step 21



- Ensure there are two ends of the electric strip detached from the camera.

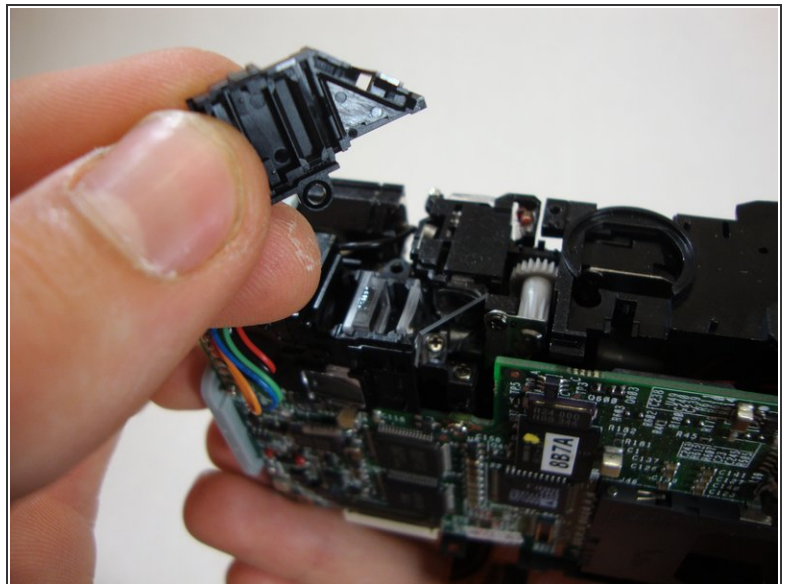
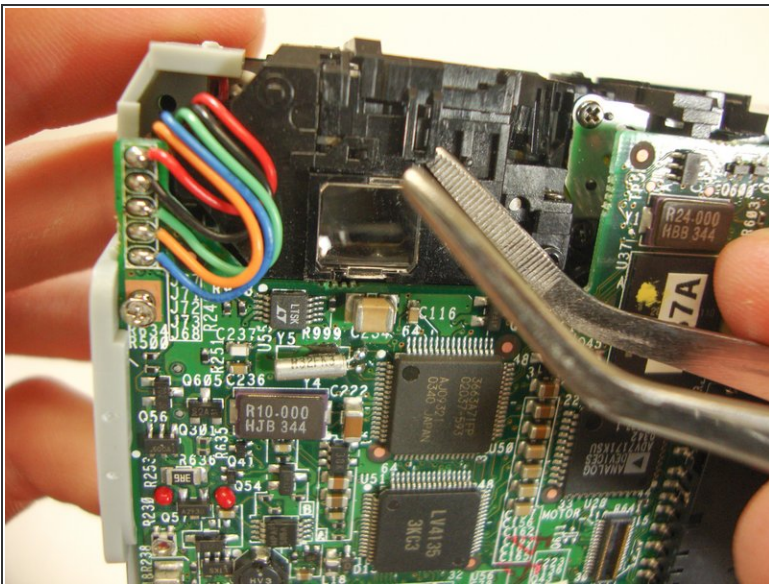
Step 22



- Using your fingers, fully detach the strip along with the casing. Be careful not to rip or tear any part of the electric strip.

⚠ Do not break or remove the black wire. This will damage the camera.

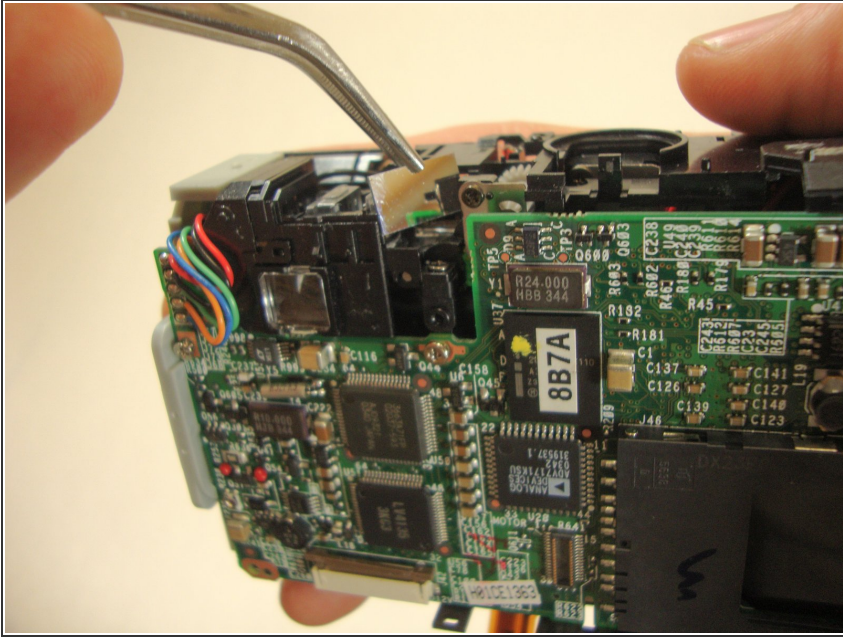
Step 23



- Orient the camera so that you are looking at the back of the camera. Directly above where the LCD screen was located, find the viewfinder cover clip.
- Detach the clip with a pair of tweezers.
- Push upwards and remove the viewfinder cover.

This document was generated on 2023-01-13 10:21:32 PM (MST).

Step 24



- Remove the viewfinder mirror by pulling up on the mirror with tweezers.

To reassemble your device, follow these instructions in reverse order.