



# Gateway ID49C07U Keyboard Replacement

Written By: Ryan Howlett





## TOOLS:

- [Metal Spudger](#) (1)
-

## Step 1 — Battery



- Turn the laptop over so the bottom of the device is facing upwards with the hinge facing away from you.

## Step 2



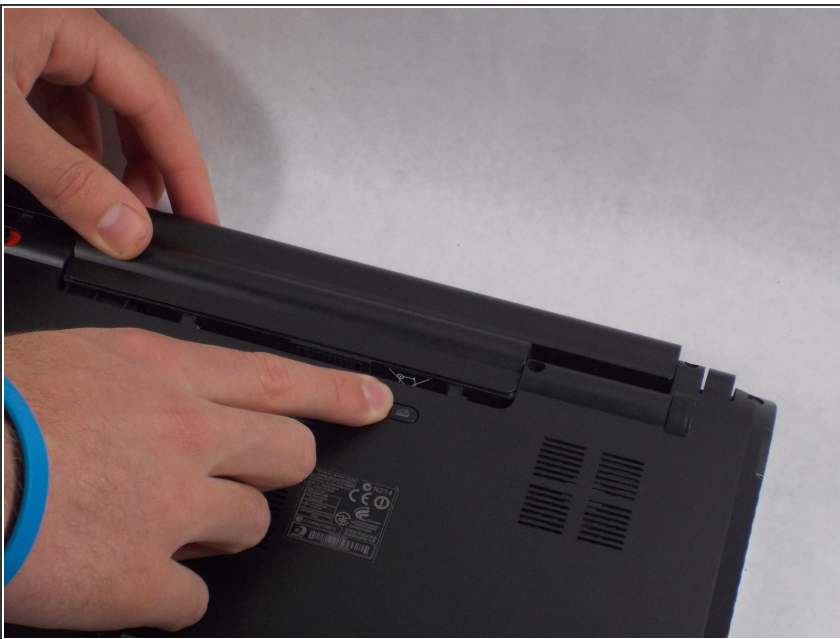
- Locate the switch on the top left of the laptop labeled with a padlock symbol.
- Flip the switch in the direction of the unlocked padlock symbol.

### Step 3



- Locate the switch that releases the battery and slide it to the right.

### Step 4



- While holding the release switch to the right, pull the battery away from you.

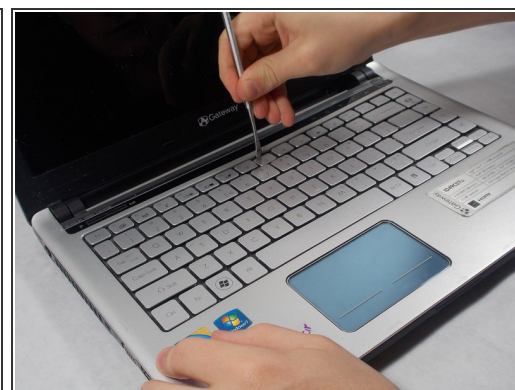
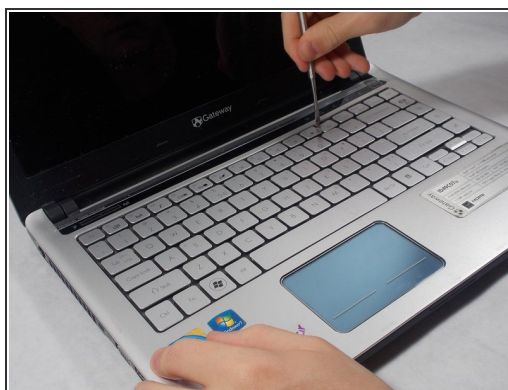
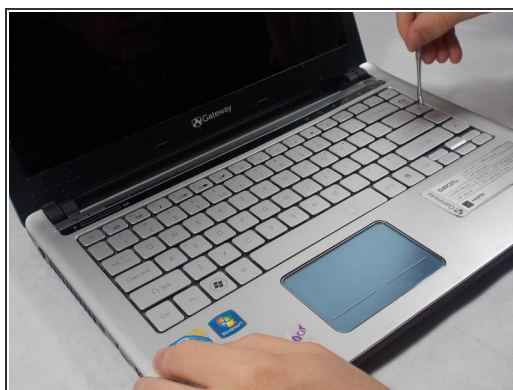


## Step 5 — Keyboard



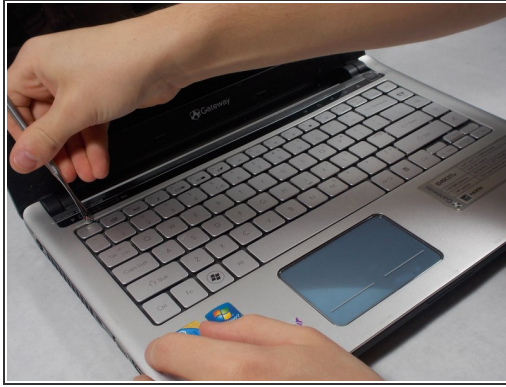
- Turn the laptop over and open

## Step 6



- Use the small metal spudger to push in each of the clips on the keyboard

## Step 7



- Continued

## Step 8



- Use the small spudger to pick up the corner

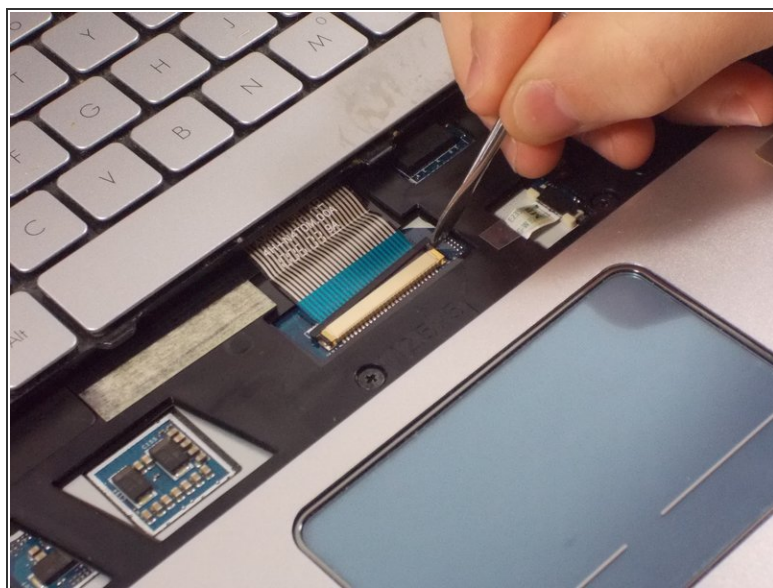
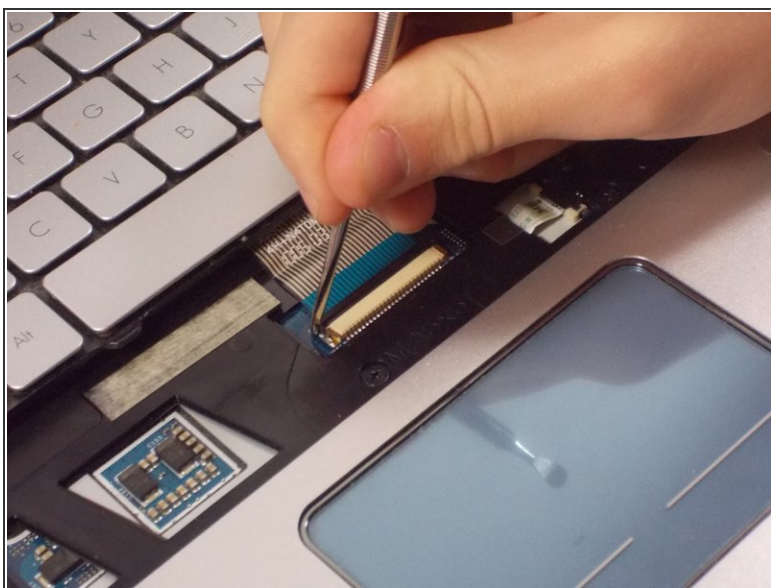


## Step 9



- Slide keyboard towards the screen

## Step 10



- Use the small spudger to slide the cable lock up on both sides of the connector and slide the cable out

To reassemble your device, follow these instructions in reverse order.

This document was generated on 2020-11-23 09:42:27 AM (MST).

