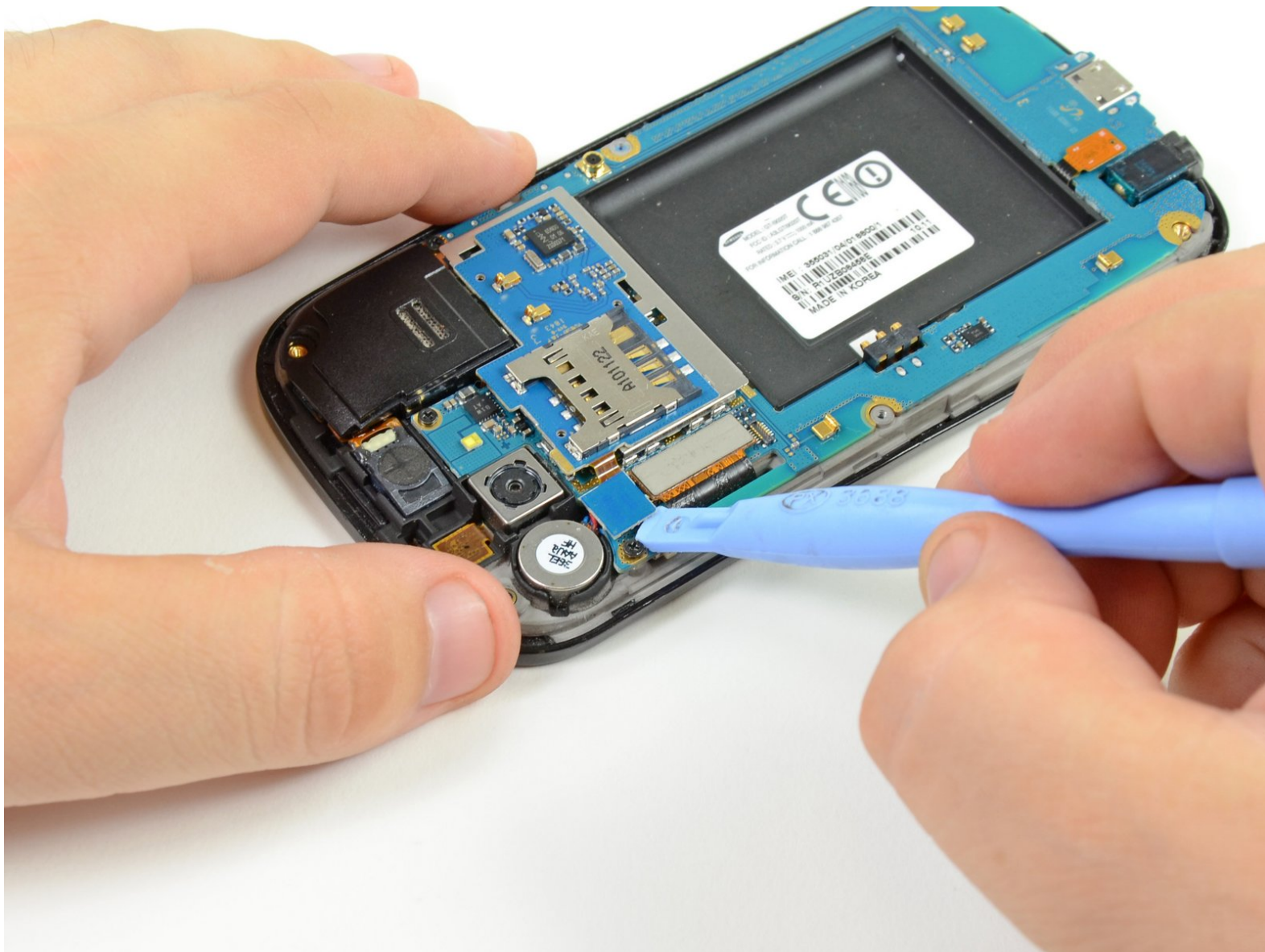




# Nexus S SIM Card Board Replacement

Written By: Walter Galan



---

# INTRODUCTION

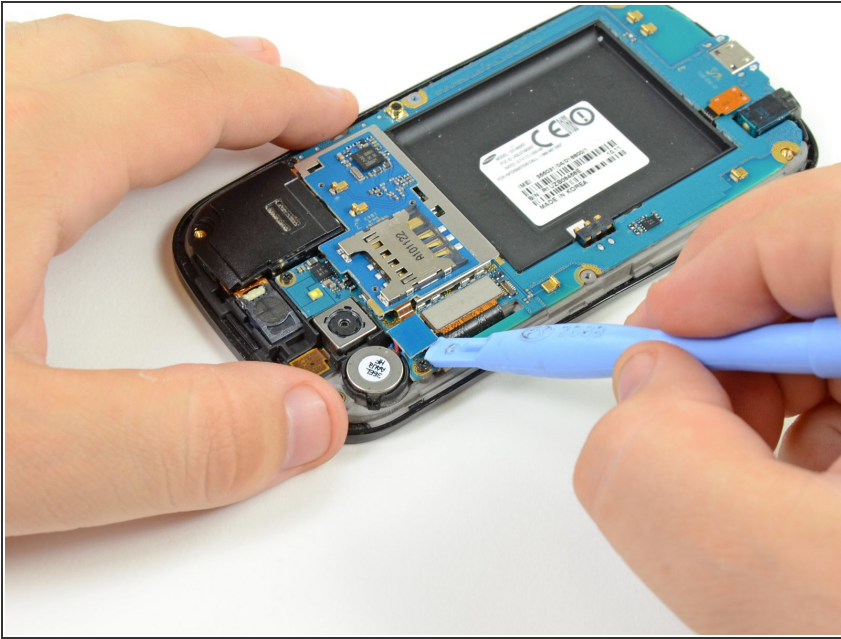
Internal prereq.



## TOOLS:

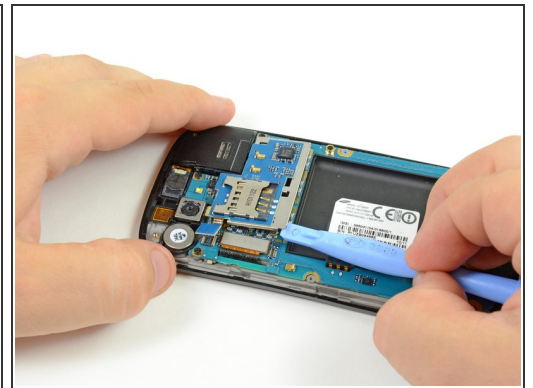
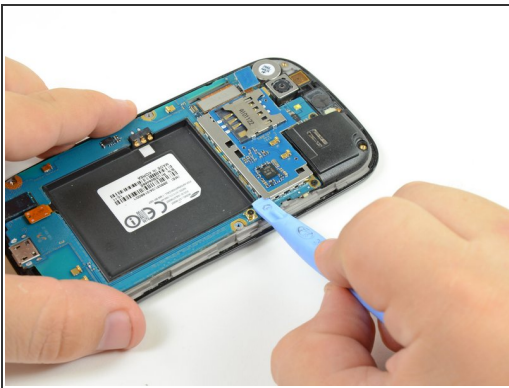
- [iFixit Opening Tools](#) (1)
-

## Step 1 — SIM Card Board



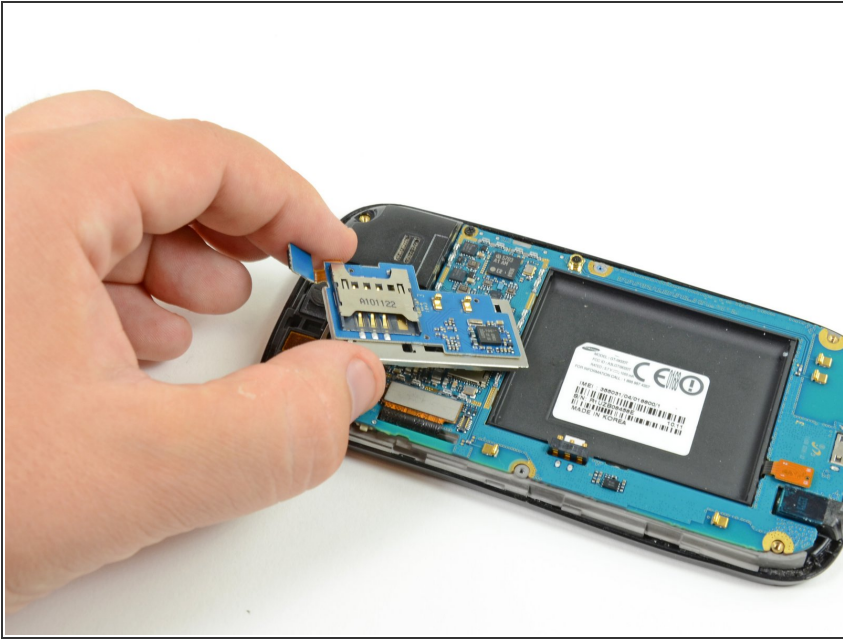
- Use the flat edge of a plastic opening tool to pry the SIM Board connector off its socket on the motherboard.

## Step 2



- Wedge the edge of a plastic opening tool underneath the SIM Card board and motherboard.
- Pry the clips located near the right bottom edge of the SIM Card board up off the motherboard.
- Repeat the process all along the bottom perimeter of the SIM Card board until all clips have been disengaged.

## Step 3



- Lift and remove the SIM Card board out of the Nexus S.

To reassemble your device, follow these instructions in reverse order.