



Sony AZ1VR Speaker Replacement

Written By: Michael Martin

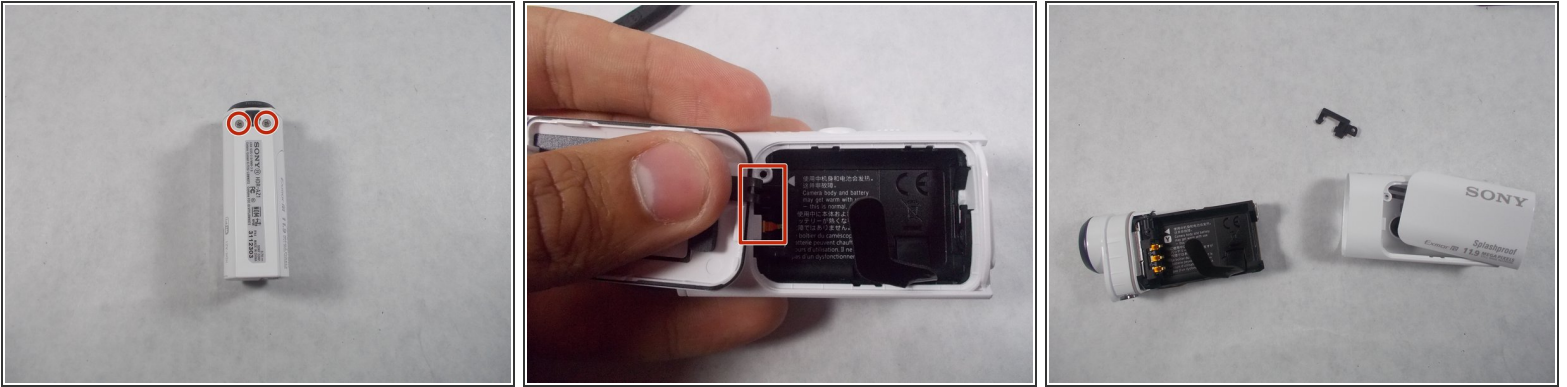




TOOLS:

- [Mako Driver Kit - 64 Precision Bits](#) (1)
 - [Spudger](#) (1)
-

Step 1 — Speaker



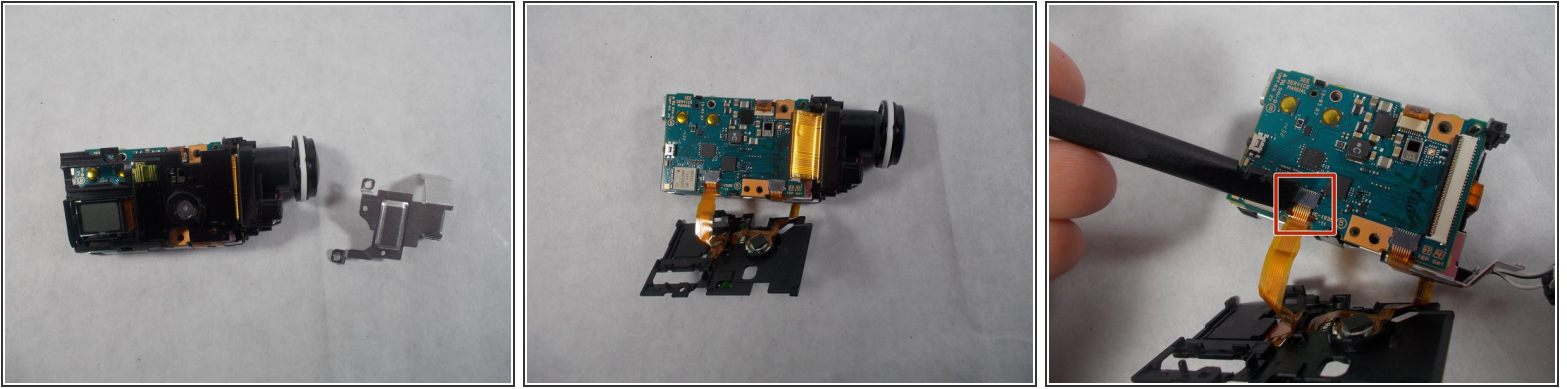
- Start by removing the two screws on the bottom, and the screw inside the battery room. Once these are removed, slide the door out, and the small piece of plastic with the door. Now, grab the lens and pull the body out of the plastic, this will reveal the insides of the device.

Step 2



- You'll see a screw on the top of the device, towards the front, remove this screw. Next pull the tabs on the bottom and top of the lens, and pull outward, this will remove the lens housing from the body. Once removed, flip the device onto its side, leaving the LCD display facing up.

Step 3



- Remove the screws connected to the silver metal plate, once done, remove the plate by pulling the back up and pushing it towards the front. Now remove the screw directly above the LCD display, this will loosen the plastic up. Pull the plastic up gently, it will be connected by cables on the bottom. From here remove the speaker .

To reassemble your device, follow these instructions in reverse order.