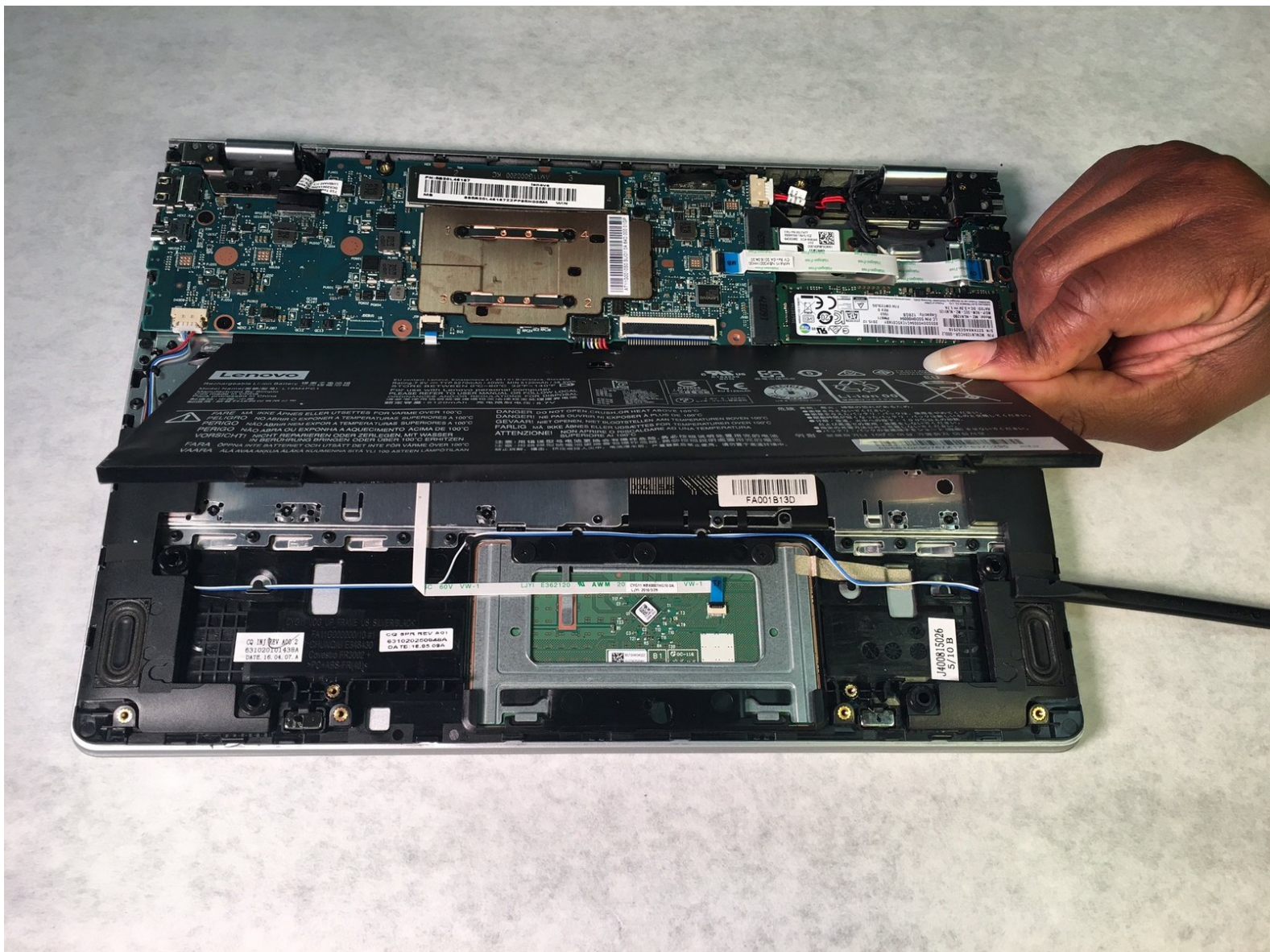




# Lenovo Yoga 710-11ISK Battery Replacement

The Lenovo is powered by an internal battery located directly under the back panel. This guide will show you how to replace your battery.

Written By: Teairra Woods



## INTRODUCTION

The Lenovo Yoga battery loses charge quickly. You have already tried unplugging it when it is fully charged, or adjusting the light to save energy. You may need to replace the battery. This guide will help you.



### TOOLS:

- [T5 Torx Screwdriver](#) (1)
  - [Phillips #00 Screwdriver](#) (1)
  - [Phillips #1 Screwdriver](#) (1)
-

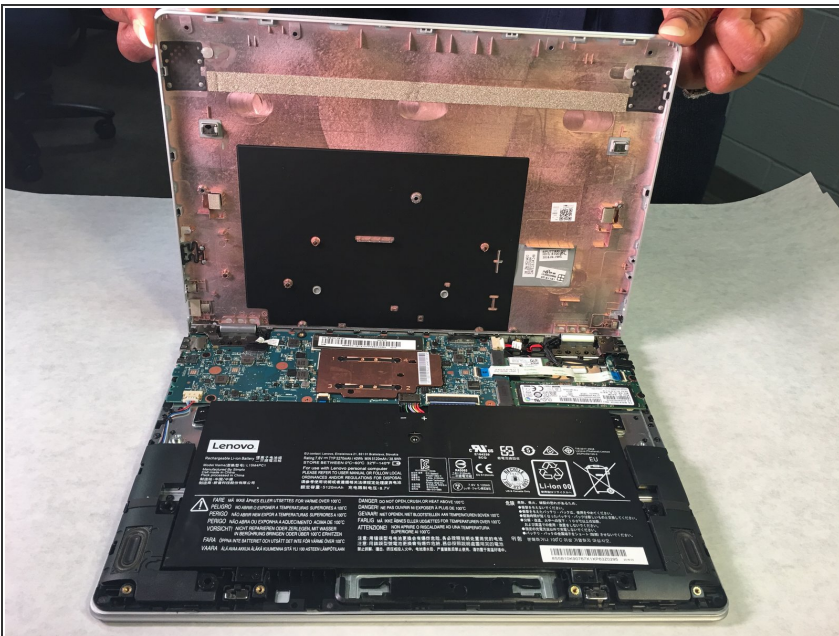


## Step 1 — Battery



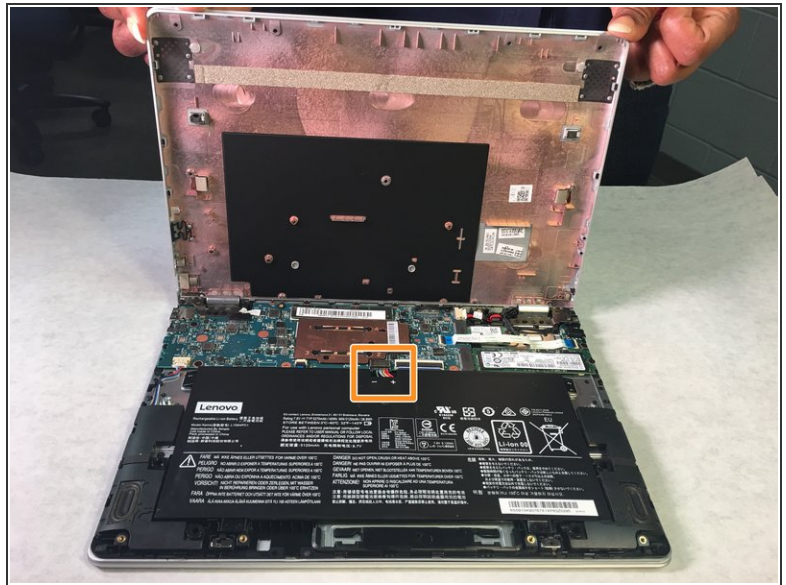
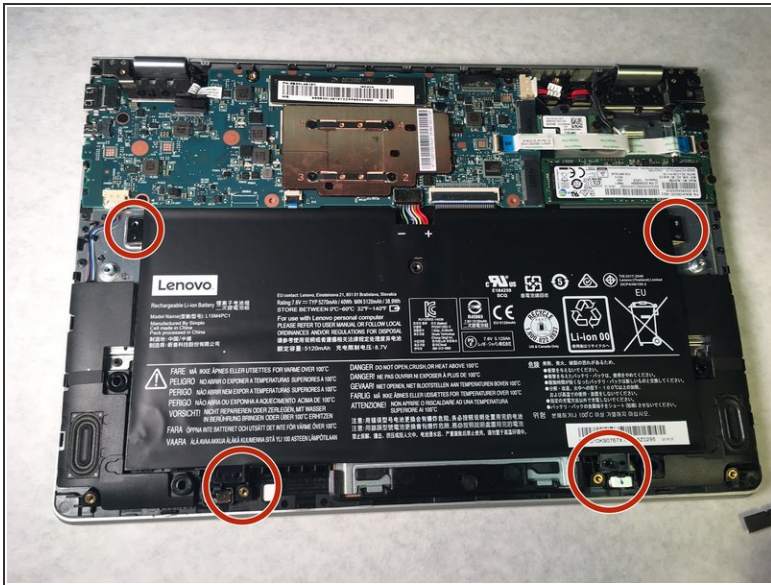
- Flip the device having the bottom panel facing you.
- Remove the eleven 5mm Torx T5 screws from the back panel.

## Step 2 — Removing back cover



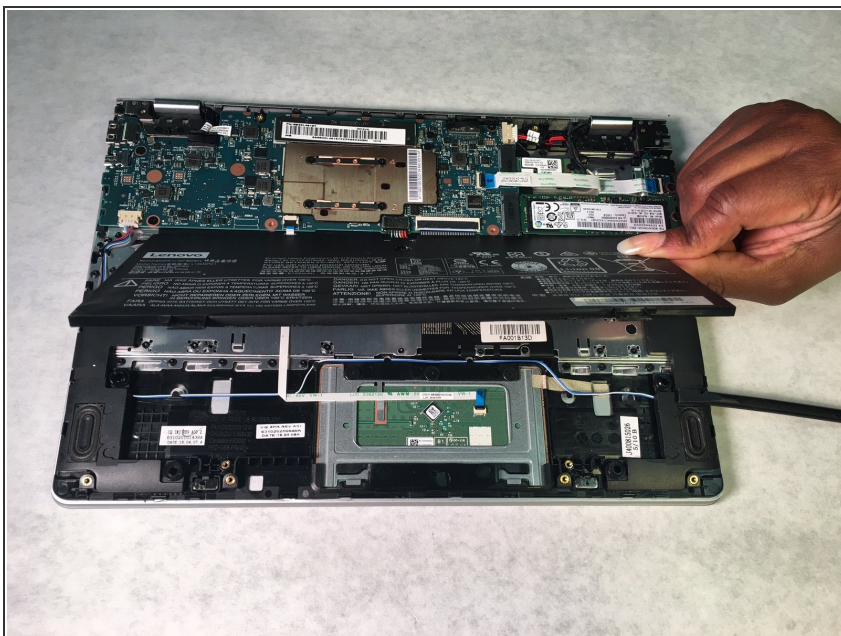
- Remove the back panel carefully.
- i* To remove the back cover, there are 5 plastic snap hooks that must be dislodged with a spudger or plastic pick tool.
- i* Lay the device upside down with hinges away from you. Tilt it at 45 degree angle, leaving hinges down and open the screen slightly. Apply a little pressure on one corner to see where it separates. Then work from side to side to separate the back case from the top case. The back case is a shell with no components in it.

## Step 3



- Remove the two 3mm Phillips #1 screws that are holding the battery to the device.
- Hold the bundled cable connector on each side and carefully pull the connector to release it from the motherboard.

## Step 4



- Remove the battery carefully from the device by lifting up the edge nearest you and then gently pull toward you to disconnect the power wires.

To reassemble your device, follow these instructions in reverse order.