



iMac G5 20" Model A1076 Inverter Replacement

Written By: Walter Galan



INTRODUCTION

Use this guide to replace your display inverter.



TOOLS:

- [Phillips #1 Screwdriver](#) (1)
- [Spudger](#) (1)



PARTS:

- [iMac G5 20" 1.8 \(EMC No. 2008\) 2 \(EMC No. 2056\) GHz Inverter](#) (1)

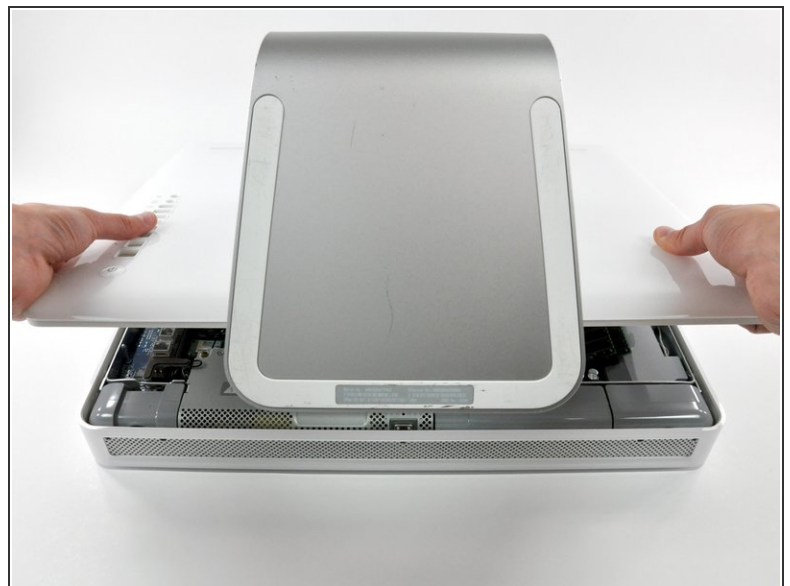
Step 1 — Rear Panel



- Lay the iMac display-side down on a flat surface.
- Loosen the three Phillips screws securing the rear panel to the iMac.

⚠ These screws are captive in the iMac. The center screw will stop turning after about 3.5 turns and the outer screws will stop turning after about 5.5 turns. Do not try to remove these screws from your iMac.

Step 2



- Lift the rear panel slightly near the bottom of the iMac.
- Pull the rear panel toward yourself and remove it from the iMac.

Step 3 — RAM



- Rotate each of the two RAM retaining arms away from the RAM chip.
- Pull the RAM chip straight away from its socket.
- ⓘ Repeat this process for the other RAM chip.
- ☑ Be sure the RAM arms are rotated fully outward before installing new RAM chips.

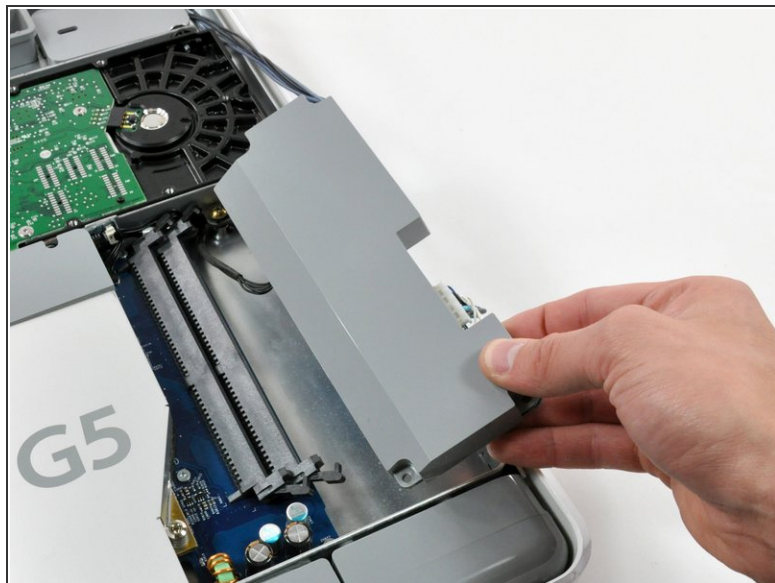
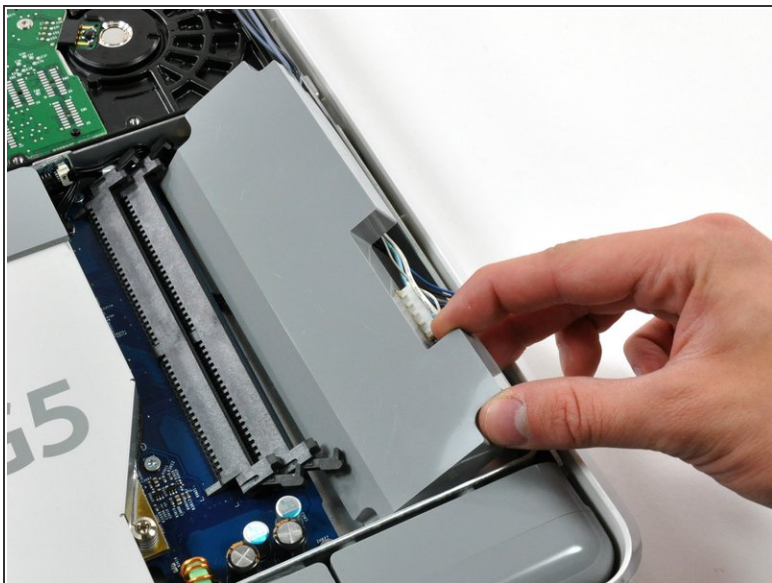
Step 4 — Inverter



- Remove the following three screws securing the inverter to the chassis:
 - Two 7.9 mm Phillips.
 - One 26 mm Phillips.

⚠ When reinstalling the inverter, be careful to route the purple and black cables around the screw mount. It is very easy to pinch the cable and damage the insulation.

Step 5



- Slide the inverter toward the edge of the mid-plane, then lift it out of the iMac.

⚠ Be careful to not pry up against the RAM brackets.

- ☞ When reinstalling the inverter, press the blue and white cables down in the edge of the midplane before lowering the inverter down into the midplane. The black cable can be routed near the hard drive thermal sensor cable.

Step 6



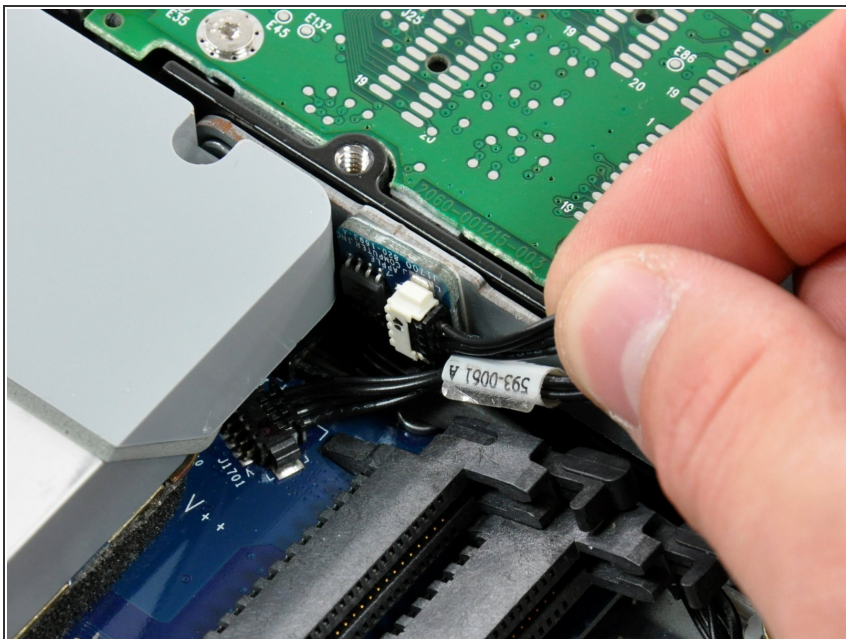
- Disconnect the large inverter cable connector from the inverter by pulling straight away from its socket.

Step 7



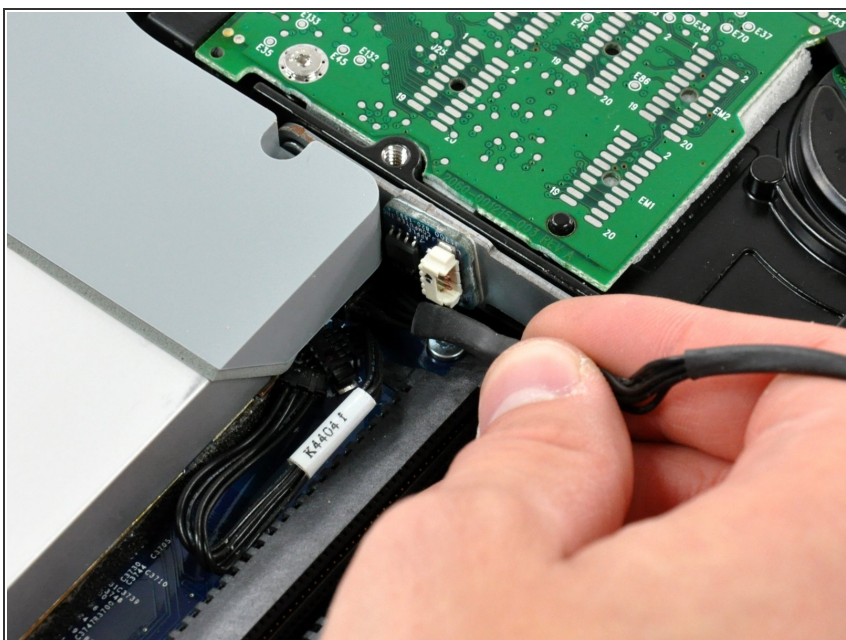
- Disconnect the small inverter cable connector by pulling it straight away from its socket.

Step 8



- Disconnect the hard drive thermal sensor cable from the thermal sensor board on the hard drive bracket by pulling the cable away from the heat sink.

Step 9



- Gently pull the black inverter cable to disconnect it from the logic board.
- ★ If you have trouble plugging this cable back in during reinstallation, remove the [fan duct](#) for more room to work.

Step 10



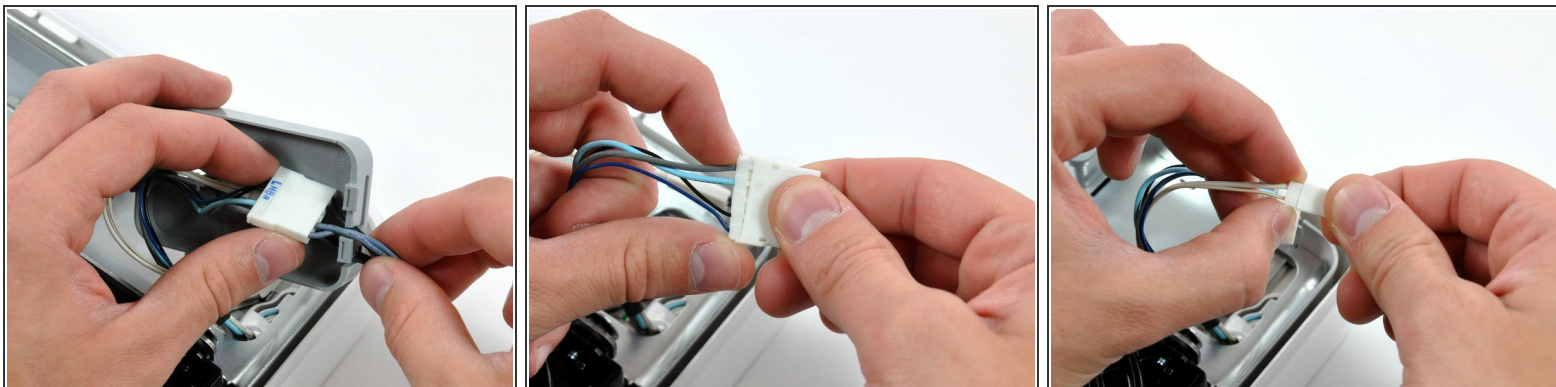
- Flip up the inverter cable cover from its left edge and lift it out of the chassis.

Step 11



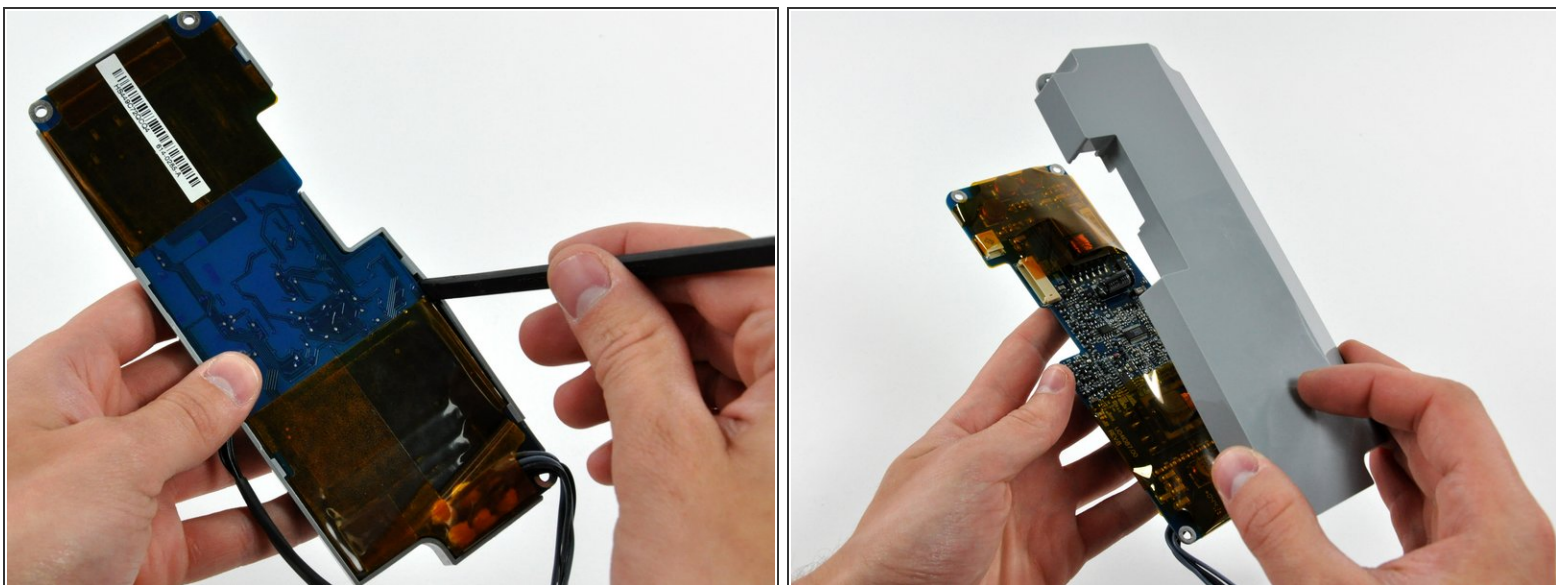
- De-route the inverter cables from the inverter cable cover hook.

Step 12



- Remove the inverter cables from the inverter cable cover, and disconnect both connectors.

Step 13



- ☞ If you wish to replace just the inverter board, use a spudger to pry off its plastic cover.

To reassemble your device, follow these instructions in reverse order.