



Acer Aspire One 751h-1948 Display Replacement

This guide will help you replace the display of your Acer Aspire One 751h-1948.

Written By: Chris Bolton



INTRODUCTION

This guide will help you replace the display of your Acer Aspire One 751h-1948.



TOOLS:

- [Phillips #0 Screwdriver](#) (1)
 - [iFixit Opening Tools](#) (1)
 - [Spudger](#) (1)
-

Step 1 — Battery



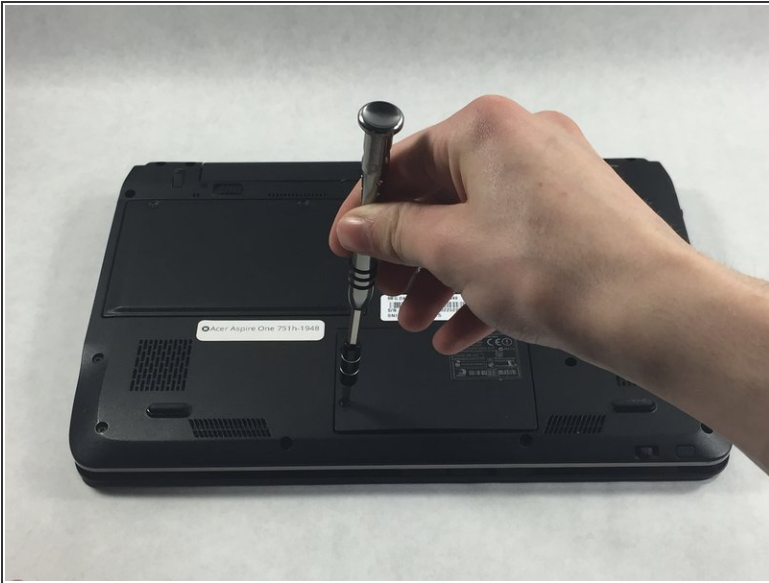
- Close the laptop and flip it over to view the back of the laptop.

Step 2




- Unlock the right side of the battery by sliding the battery lock to the right. Then slide the left lock to the left and remove the battery.

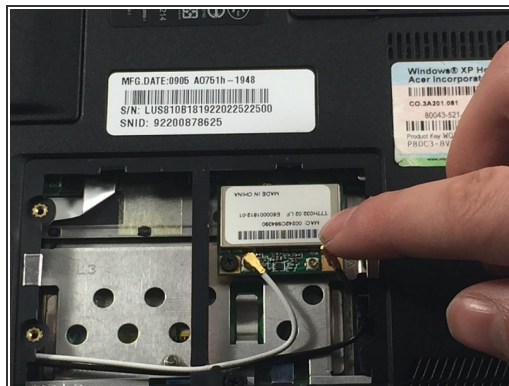
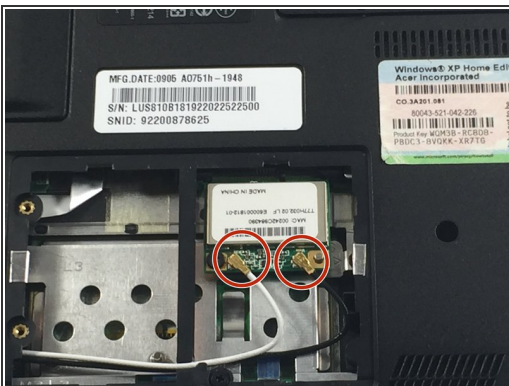
Step 3 — Network Card



- Unscrew the two Phillips #0 (M2-L2.5 mm) holding down the network card panel.

 These screws don't come all the way out.

Step 4



- Unplug the two connecting cables by lifting them up. They should unclip easily.

Step 5



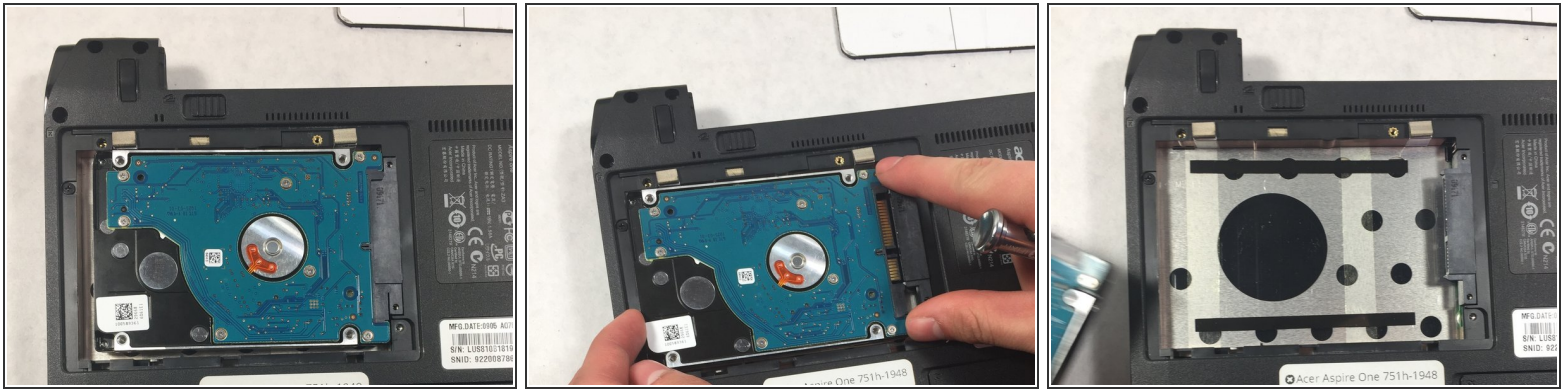
- Remove the screw Phillips #0 (M2-L3 mm) holding down the network card. Pull out the card.

Step 6 — Hard Drive



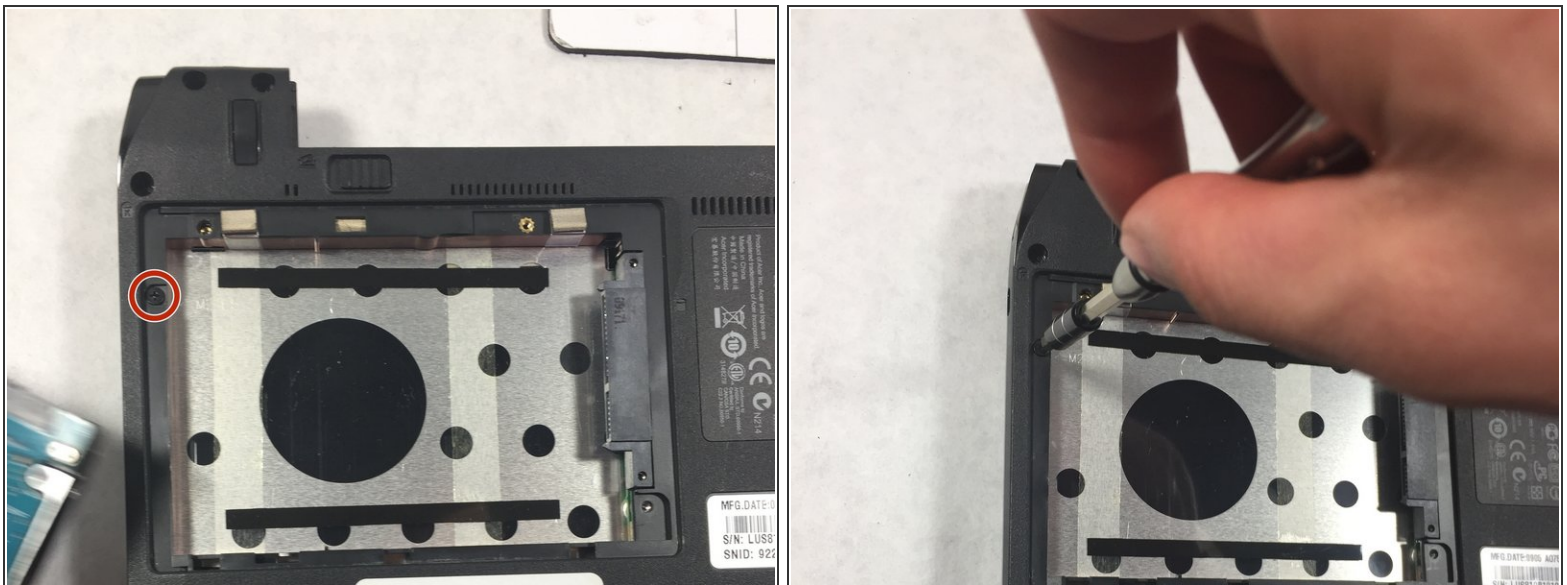
- Unscrew the Phillips 0# (M2 L2.5 mm) screw and remove the cover panel.
- ⓘ These screws will not come out all the way.

Step 7



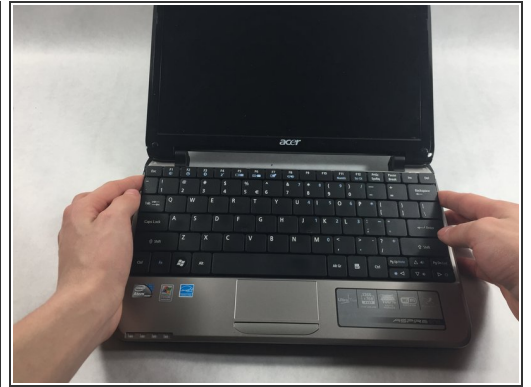
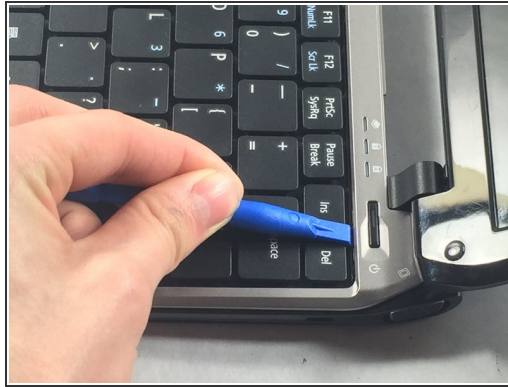
- Remove the hard drive by sliding it to the left and pull it out.

Step 8



- Unscrew the Phillips #0 (M2-L2.5 mm) screws.

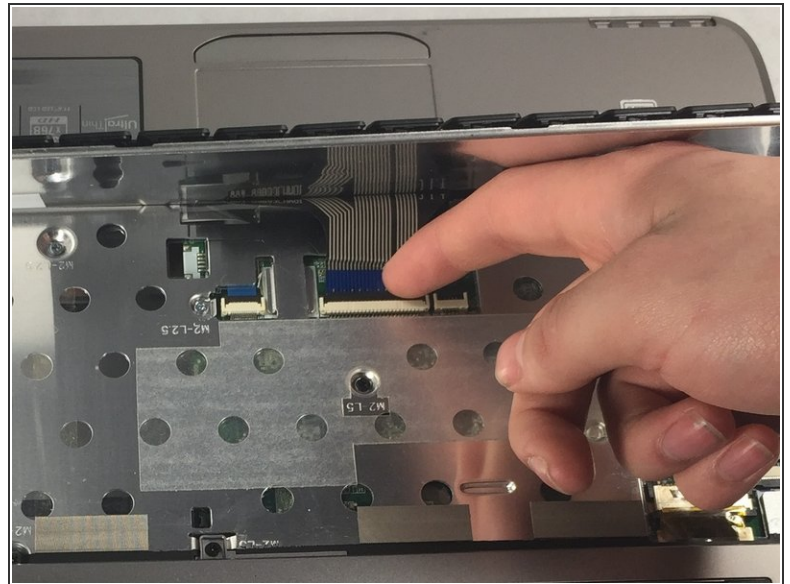
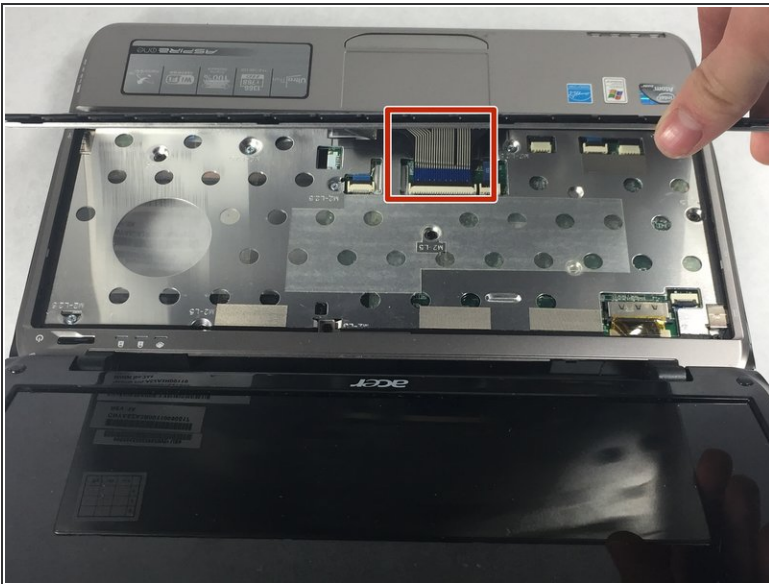
Step 9 — Keyboard



- Use the plastic opening tool to push in each of the four clips and carefully lift the keyboard.

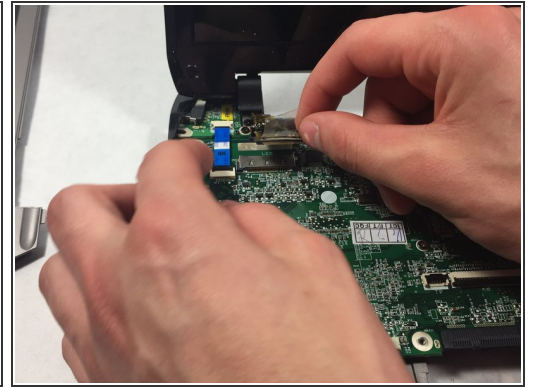
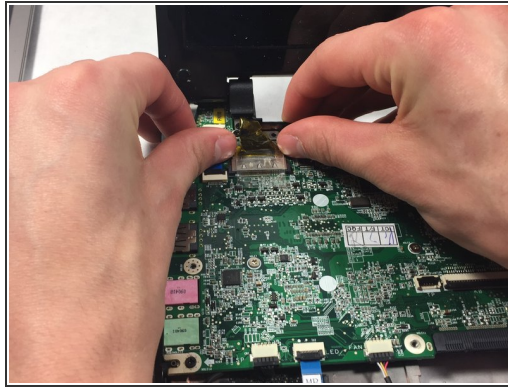
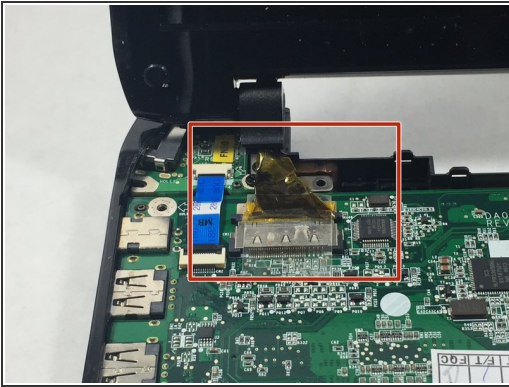
⚠ Don't lift the keyboard completely so that you don't damage the ribbon cable underneath.

Step 10



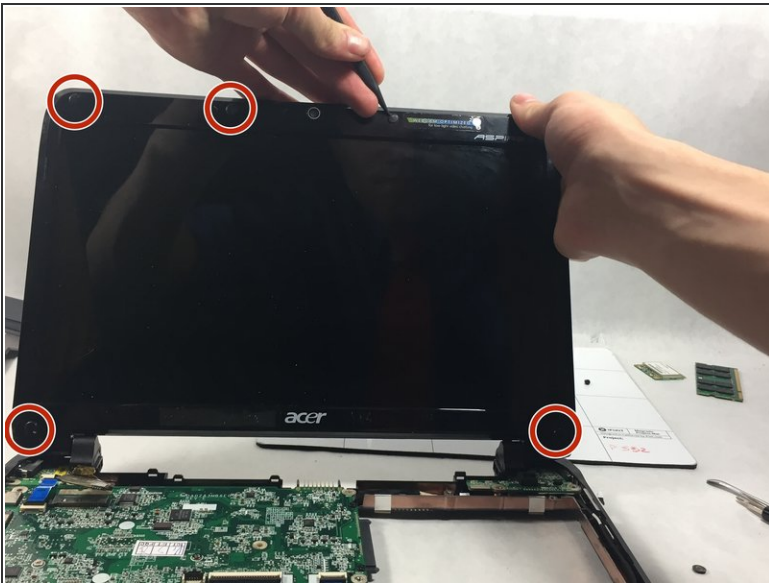
- When you remove the keyboard, be careful not to damage the ribbon cable that attaches it to the motherboard.
- Unplug the ribbon cable by gently lifting the black tab up. Then remove the cable.

Step 11 — Display



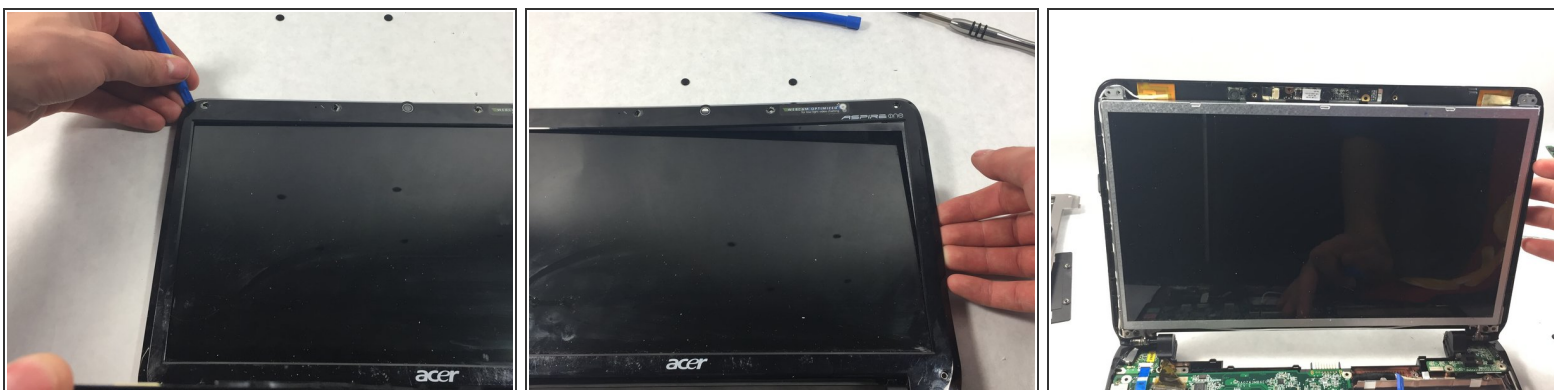
- Unplug the SCD cable

Step 12



- Use the spudger to remove all rubber pads covering the screws for the upper casing.
- Then unscrew all the Phillips #0 (M2-L5 mm) screws under rubber pads.

Step 13



- Separate the upper casing from the display.

Step 14



- Unscrew all the Phillips 0# (M2-L2.5 mm) on each side of the display.

Step 15



- Separate the screen from the metal frame that secures it to the upper casing and remove the screen.

⚠ Be careful, the display is very sensitive.

To reassemble your device, follow these instructions in reverse order.