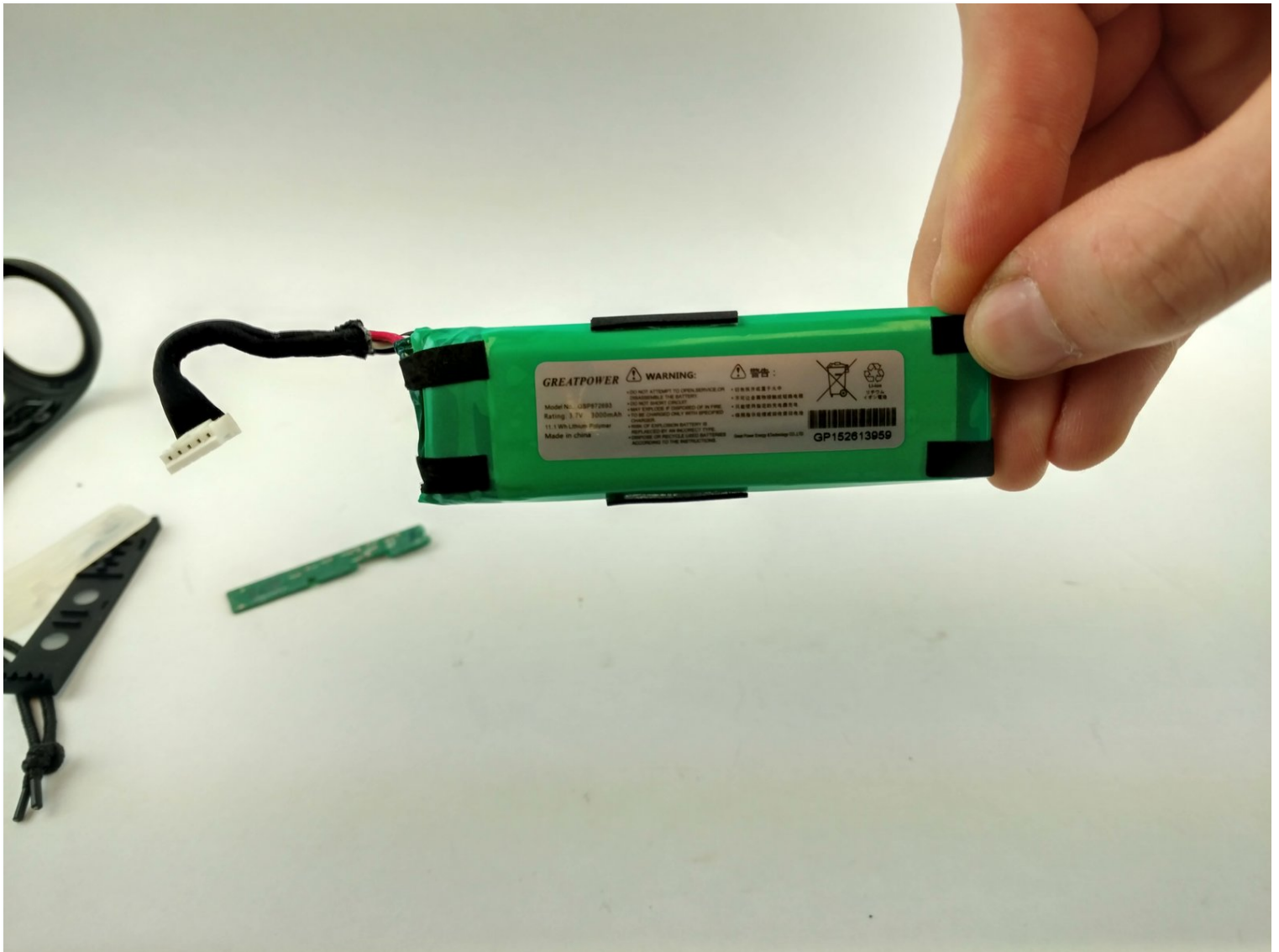




JBL Flip 3 Battery Replacement

Written By: College Student





TOOLS:

Heat Gun (1)

Spudger (1)

Phillips #00 Screwdriver (1)



PARTS:

JBL Flip 3 Battery (1)

Step 1 — Battery



- Remove plastic outer housing using hands or a standard spudger.
- Important! Note the three alignment pins on the inner part of the housing. When reassembling, take special care to line these up and insert the pins into the receivers on the chassis prior to snapping the edges into place.

Step 2



- Loosen the two screws on each side and then carefully remove the outer frame to expose the inner components of the speaker.
- ① Depending on your model, you may need to remove more screws along the sides or the spine.

Step 3



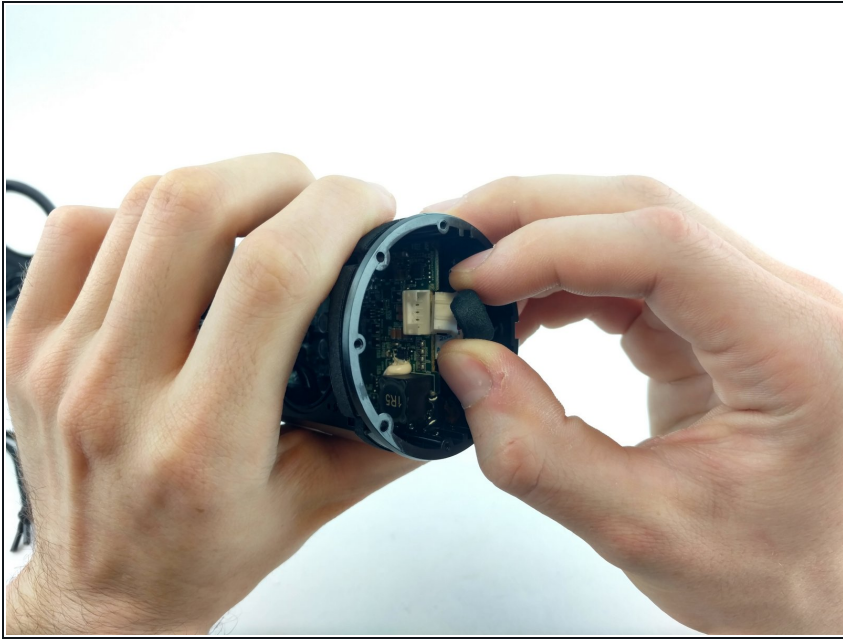
- Remove the 7 8.9mm Phillips #00 screws fastening the two side passive drivers. Then remove the side passive drivers themselves. Be sure to set them somewhere safe to ensure they aren't lost.

Step 4



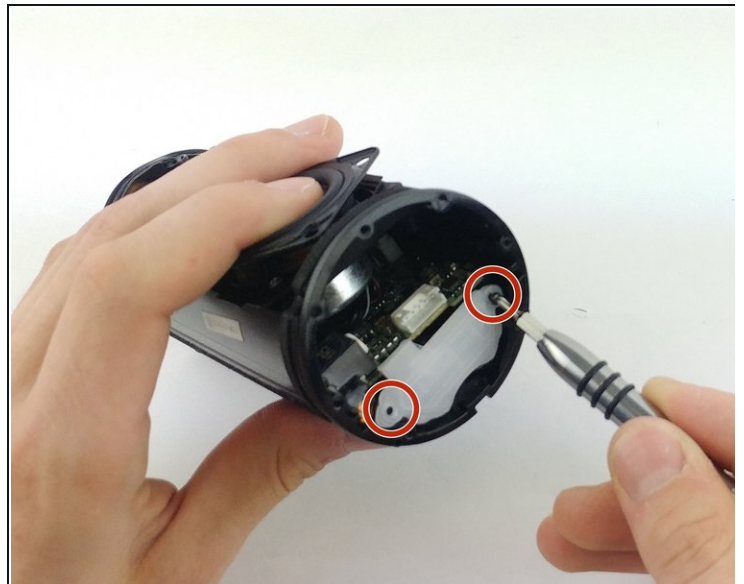
- Remove silicone button covers by peeling back the silicone covering. This will expose the circuit board. Disconnect the ribbon cable. Carefully pry out the circuit board and set aside. Use a heat gun to remove all adhesive so that the ribbon cable can freely slide out of the slot in a later step.

Step 5



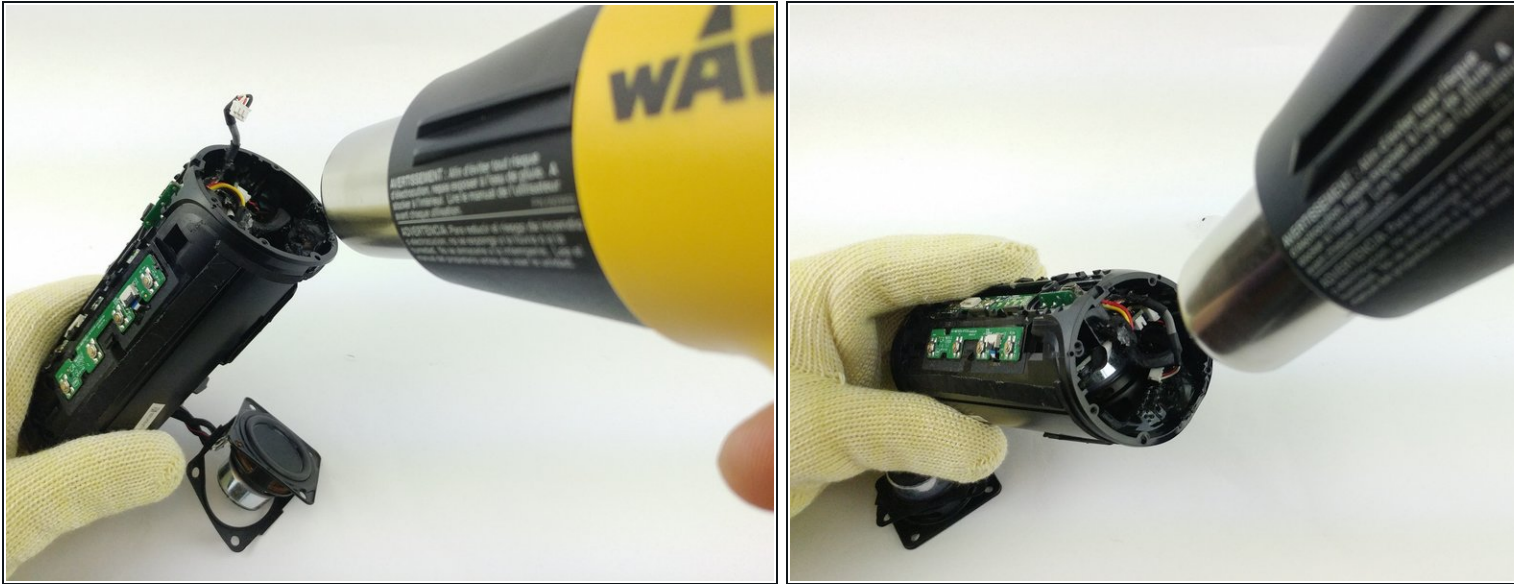
- Carefully remove the 5 pin connector from motherboard using your hands

Step 6



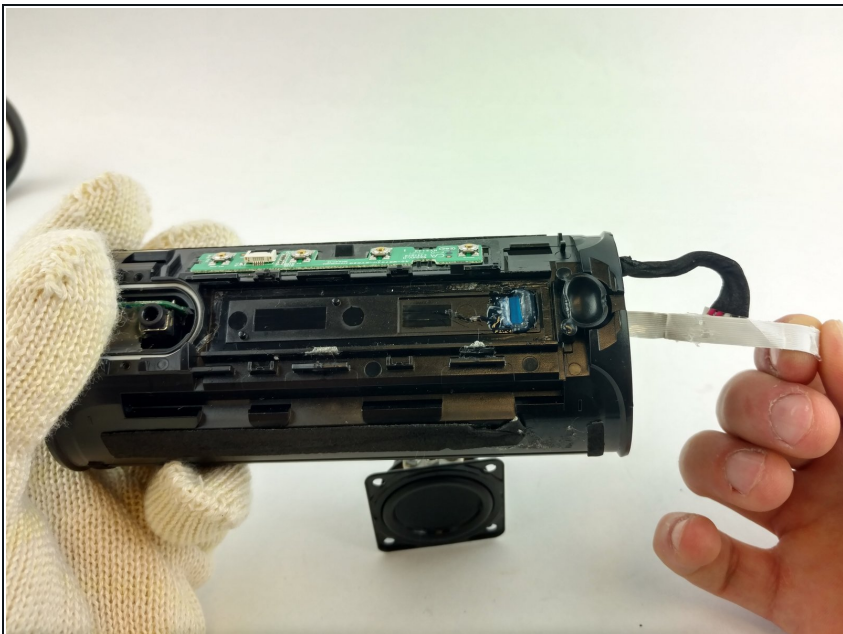
- Unscrew the 2 8.9mm Phillips #00 screws holding the plastic battery cover. Carefully set them in a different safe spot to ensure that they are both not lost and not confused with the screws from step 2.
- Remove the clear plastic battery cover.

Step 7



- Gently heat adhesive located at tip of powerchip to melt the plastic fastening the battery to the housing. Be careful not to melt the plastic housing during heating.
- Heat gun safety: http://www.powertoolinstitute.com/pti_pd...

Step 8



- Remove the ribbon holding the battery. When the ribbon is gently pulled until fully removed from the inner housing, the battery will be unfastened and removable.

To reassemble your device, follow these instructions in reverse order.