



Sony AZ1VR SD Battery Door Replacement

Replace a damaged or malfunctioning battery door on the Sony AZ1VR.

Written By: gaojian li



INTRODUCTION

Use this guide to replace the battery door on the Sony AZ1VR. There are only a few steps to removing the battery door of the Sony AZ1VR.



TOOLS:

- [Mako Driver Kit - 64 Precision Bits](#) (1)
-

Step 1 — Battery Door



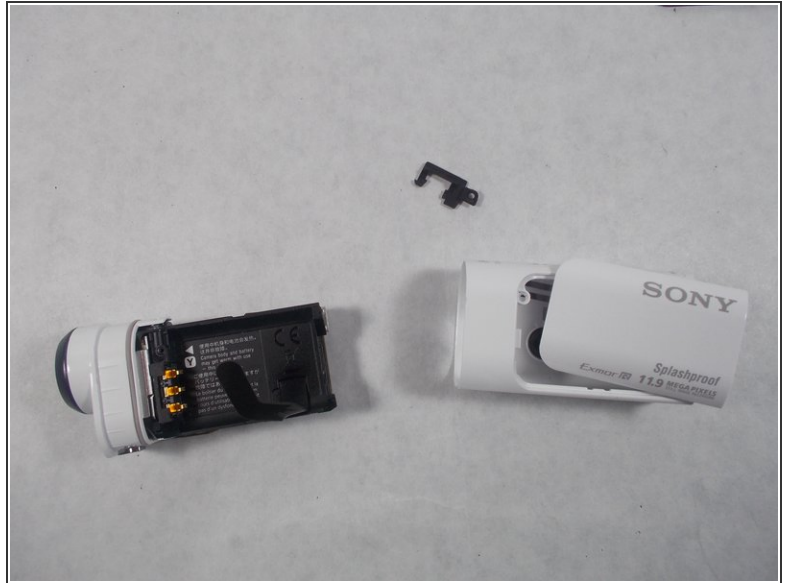
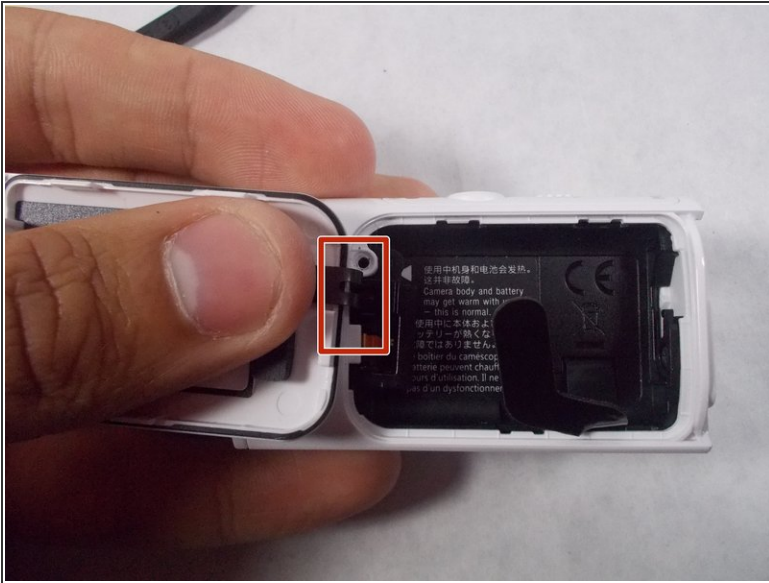
- Remove the screws on the bottom of the device.

Step 2



- Remove the screw within the battery housing.

Step 3



- Pull out the small plastic bracket that holds the door in place.

To reassemble your device, follow these instructions in reverse order.