



Dell Alienware M11x R3 Wi-Fi Card Replacement

If your Dell Alienware M11x R3 has an issue...

Written By: Richard Maurice



INTRODUCTION

If your Dell Alienware M11x R3 has an issue joining Wi-Fi networks or cannot connect to any Wi-Fi networks, a new replacement for the Wi-Fi card will be needed.

A Wi-Fi card is what allows for a device to connect to the internet with Wi-Fi and without an ethernet cable. A new Wi-Fi card will be able to connect to the internet, presuming the Wi-Fi network is able to connect to other devices.

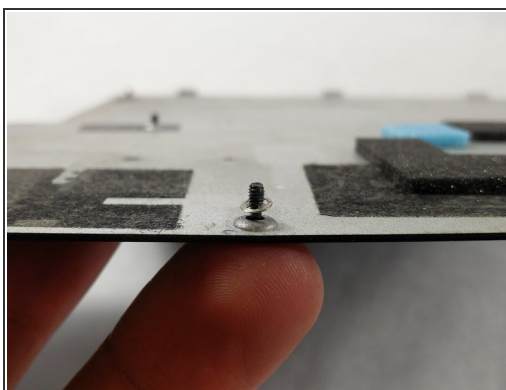
Before beginning this guide, make sure that the laptop is turned off completely unplugged from the power adapter.



TOOLS:

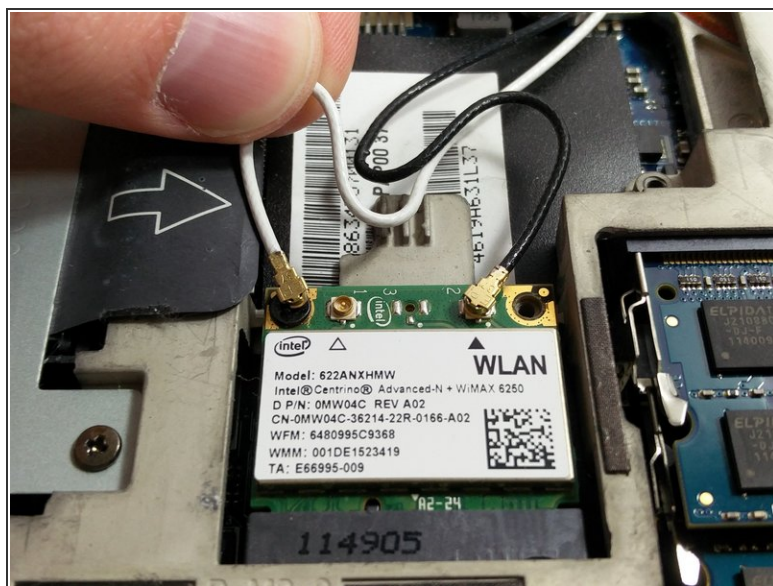
- [Mako Driver Kit - 64 Precision Bits](#) (1)
 - [JIS #1](#) (1)
-

Step 1 — Lower Case



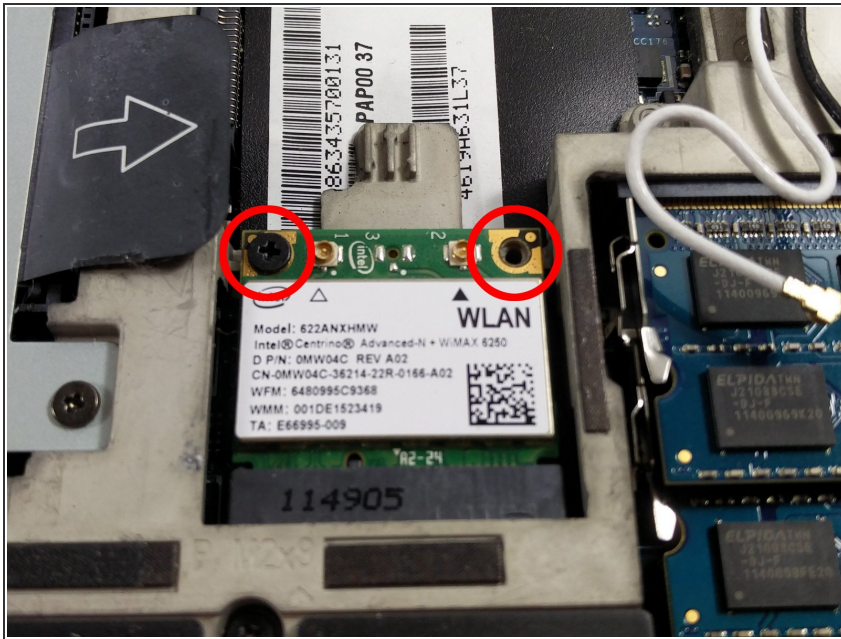
- Loosen the eight retaining screws on the base of the computer with a small Phillips screwdriver.
 - ⓘ The screws have retaining washers to hold them in place, so you don't have to remove them from the base plate.
- Remove the bottom cover from the laptop.

Step 2 — Wi-Fi Card



- ⓘ Your Wi-Fi card will have two coaxial cable wires connected to it.
- Gently **pull up** the wires to disconnect them from the Wi-Fi card.
 - ⚠ Be careful when you pull the wires. Pulling them hard or yanking them hard might cause damage to the wire or the Wi-Fi card.

Step 3



- Once the wires are removed, use an appropriate screwdriver to remove the screws holding down the Wi-Fi card.

Step 4



- When the Wi-Fi card pops up, slide it out of the socket.

⚠ Any mishandling of the Wi-Fi card will cause serious damage to it, so please be careful with it.

To reassemble your device, follow these instructions in reverse order.

This document was generated on 2022-12-23 02:32:17 PM (MST).

