



Panasonic Lumix DMC-FH25 LCD Screen Replacement

Replacing the screen is necessary if yours is damaged or broken. Removing the screen is also sometimes necessary in order to fix other things.

Written By: Janice Weldon



INTRODUCTION

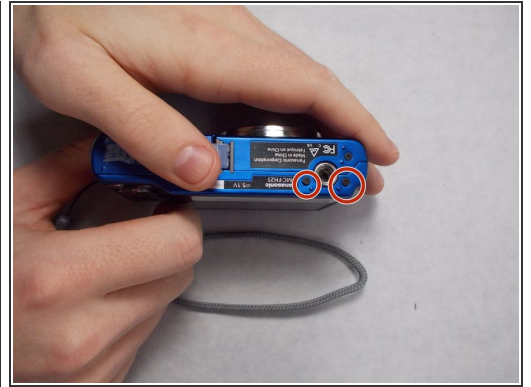
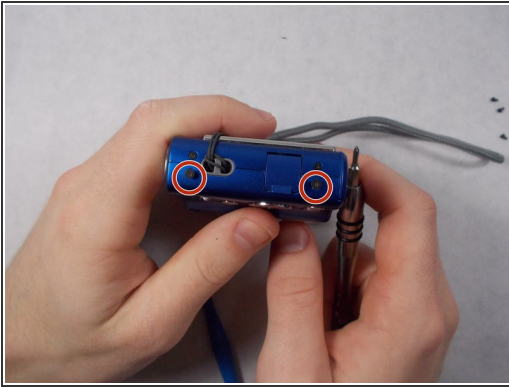
If your screen becomes damaged or broken it may need replacement. Removing the screen is an easy task involving the removal of a few screws and two cables. It is also necessary to remove the screen in order to access several parts beneath, such as the flash battery and lens assembly. Be careful not to tear the ribbon cables when the first screw on the screen is removed.



TOOLS:

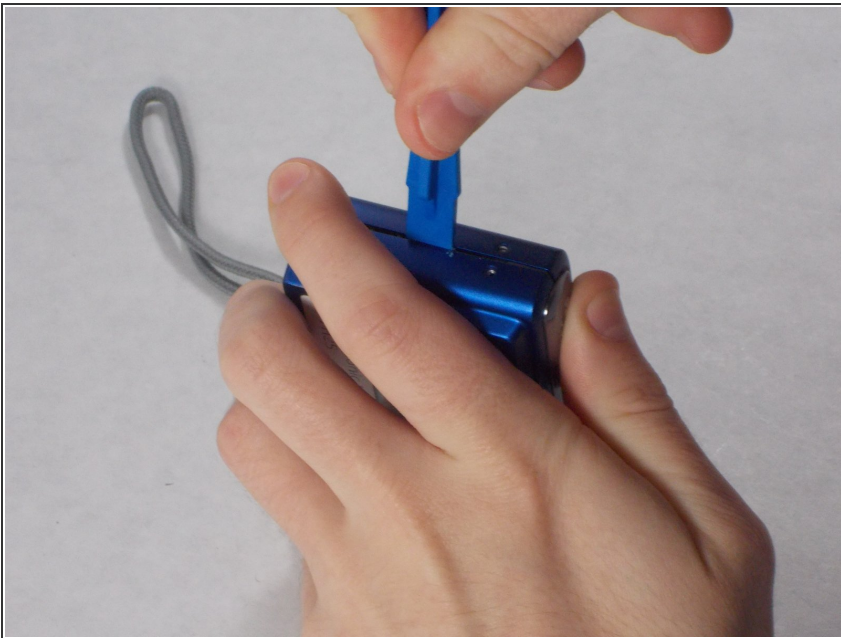
- [Phillips #00 Screwdriver](#) (1)
 - [iFixit Opening Tools](#) (1)
-

Step 1 — Back Case



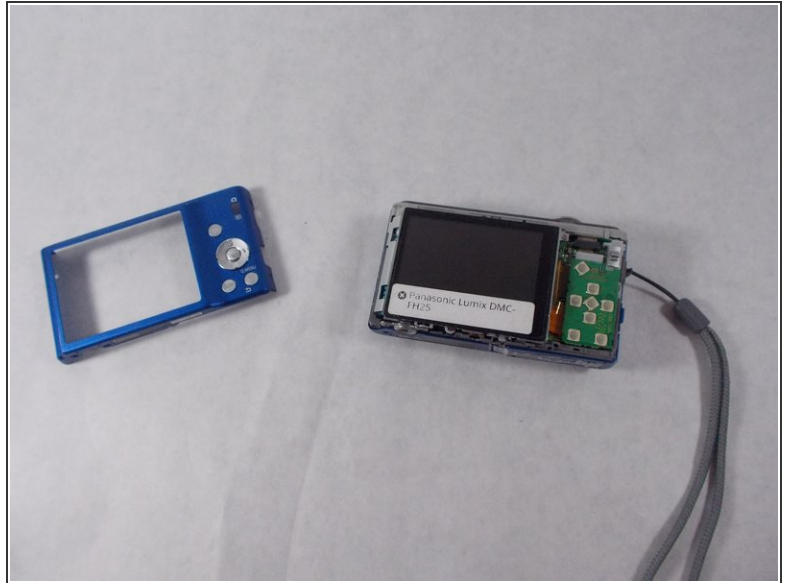
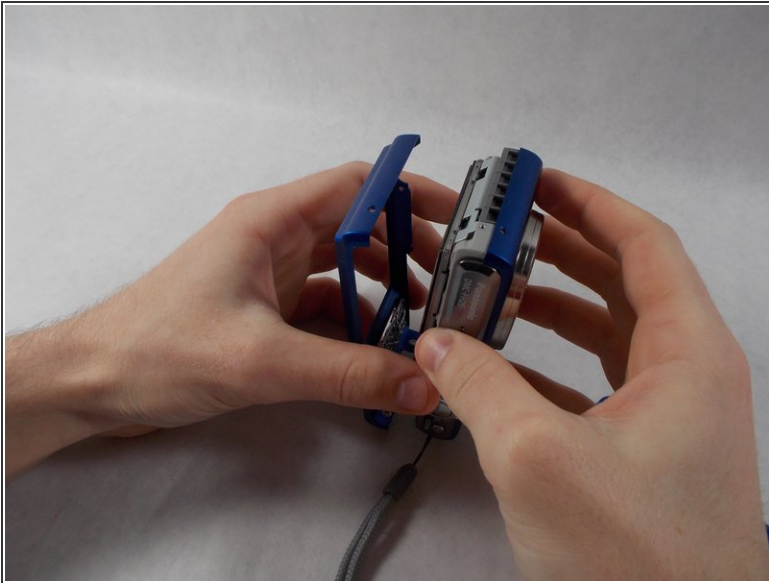
- Remove 5 screws attached to the back case using a 00 Phillips head screwdriver.

Step 2



- Using your hands and a pry tool, lever the back case off.

Step 3



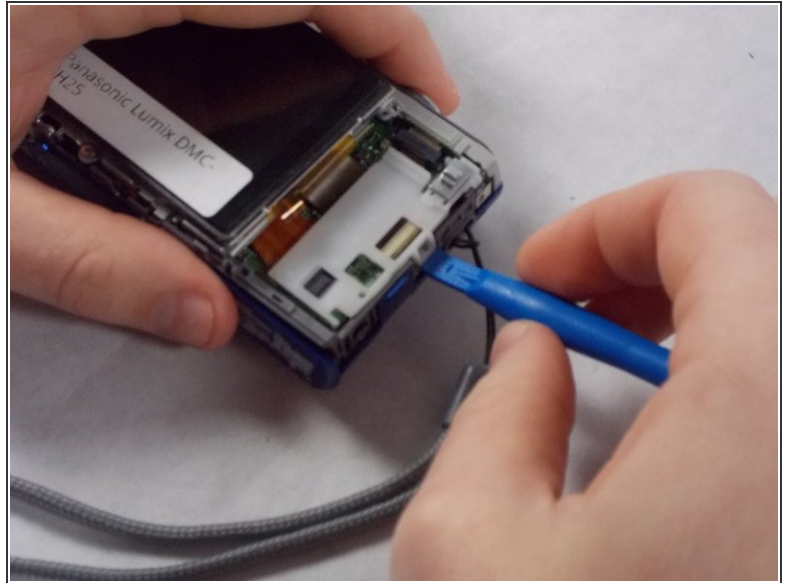
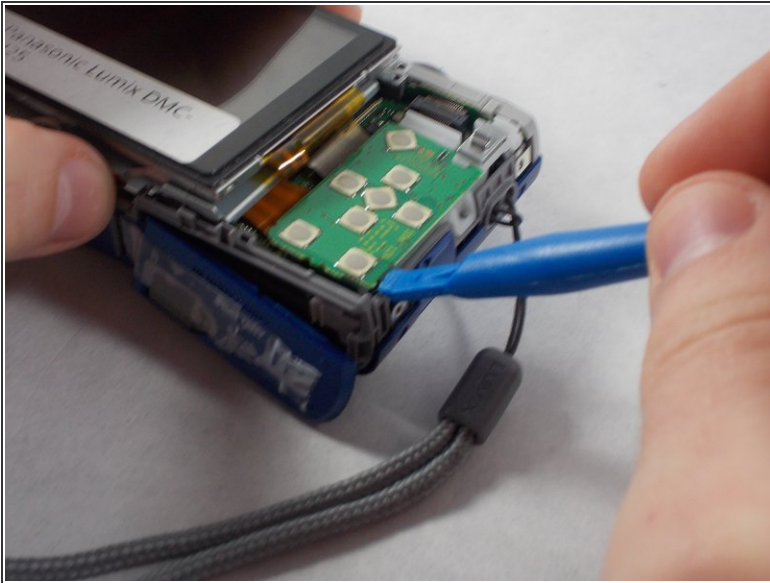
- Remove the back case.

Step 4 — LCD Screen



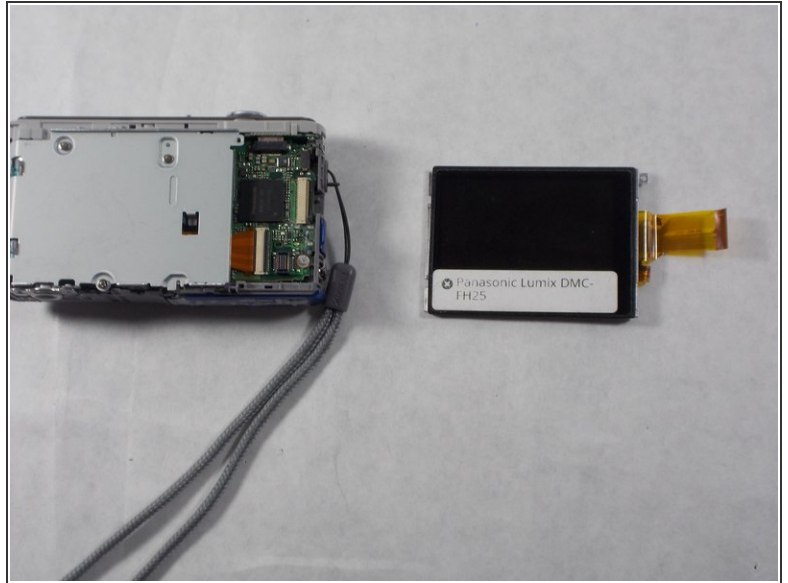
- Using a 00 Phillips head screwdriver, remove a screw from the top right corner of the screen.
- Lift the screen, being careful not to tear the ribbon cables on the right side.

Step 5



- Access the ribbon cables by removing the green button receiver panel using a plastic opening tool. There is a white panel beneath. Carefully remove this using a plastic opening tool. The white panel may require some elbow grease to get it off, and the panel may make a snapping sound as it comes off.

Step 6



- One of the ribbon cables will be housed behind the screen and the other will be under the panels. Gently pull each free from the housing and remove the screen.

To reassemble your device, follow these instructions in reverse order.