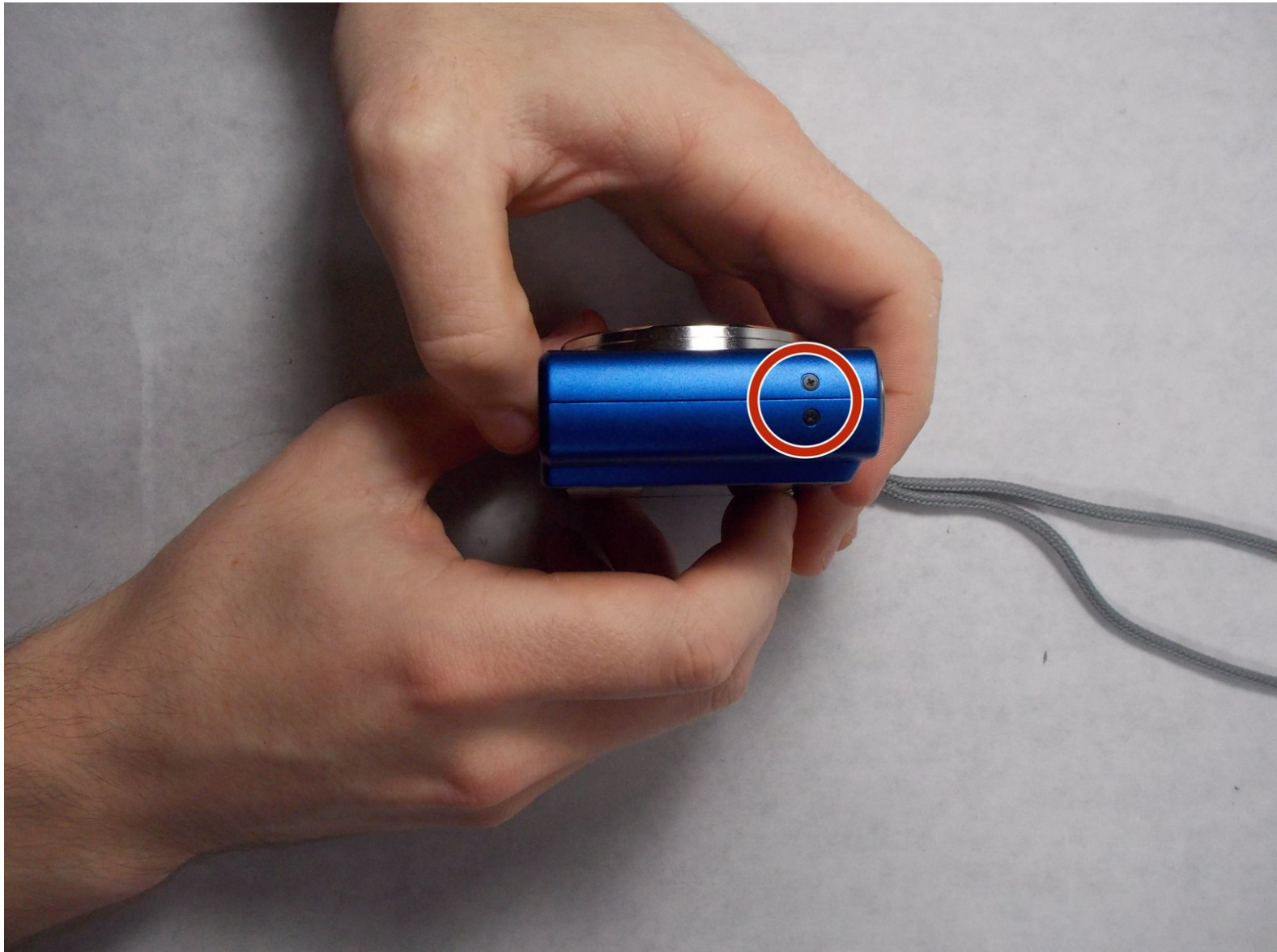




# Panasonic Lumix DMC-FH25 Front Case Replacement

Remove and replace the front case as either an end goal or as a pre-requisite for other steps.

Written By: Janice Weldon



## INTRODUCTION

Removing and replacing the front case is an incredibly easy task. It is useful if the case is damaged or broken, or if the user wants to change colors. Additionally, removing the front case is necessary if the user needs to replace any of the parts beneath, such as the lens assembly.



### TOOLS:

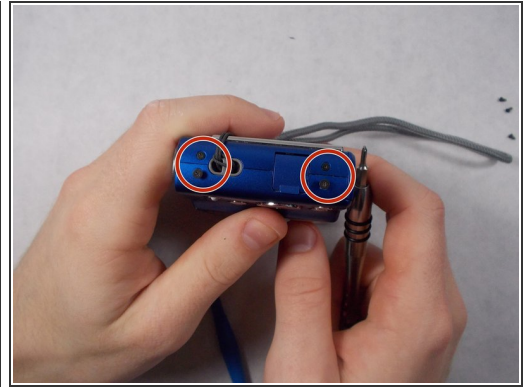
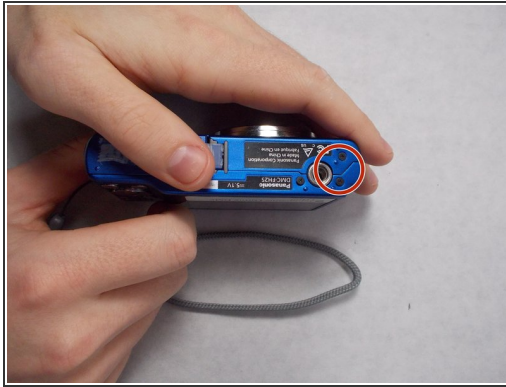
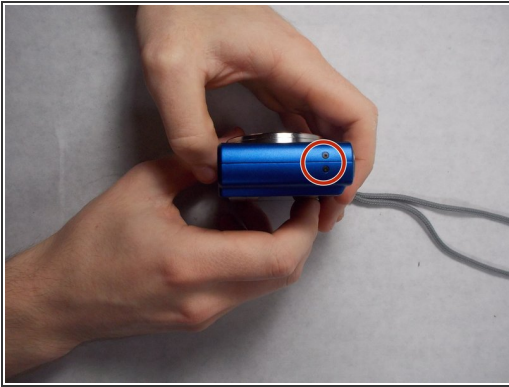
- [Phillips #00 Screwdriver](#) (1)
- [iFixit Opening Tools](#) (1)



### PARTS:

- [Phillips screws 6.35mm](#) (1)

## Step 1 — Front Case



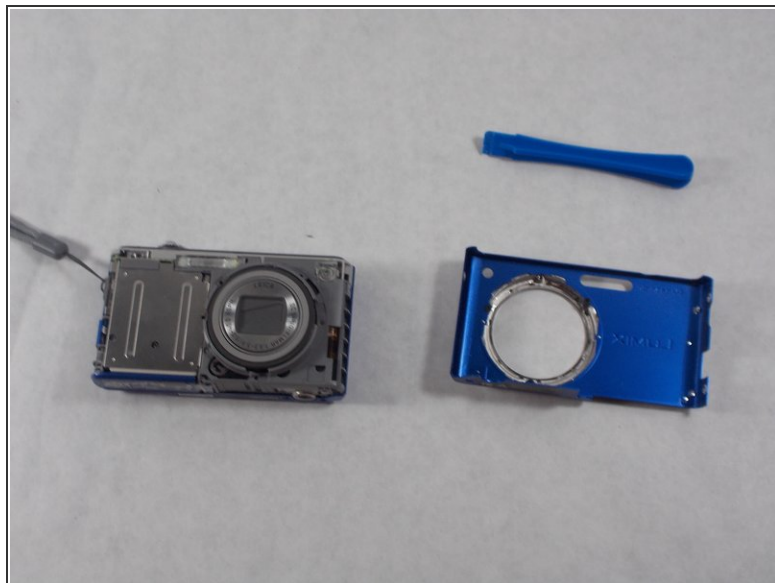
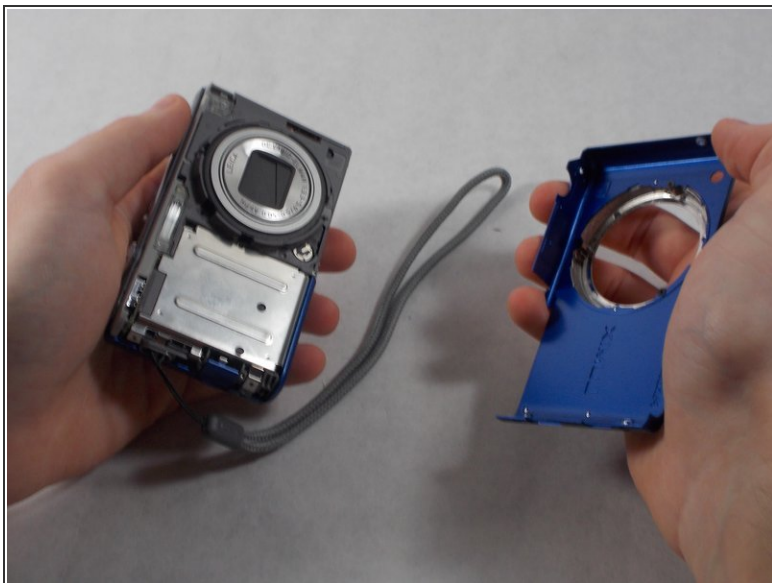
- Remove four screws on the front case using a 00 Phillips head screwdriver. Two will be on the side with the camera strap, one on the bottom, and one on the side opposing the camera strap. They will be in pairs, one screw holding the front case and one screw holding the back case.

## Step 2



- Using a plastic opening tool and your hands, pull the front case loose from the camera.

## Step 3



- Remove the front case from the camera.

To reassemble your device, follow these instructions in reverse order.