



Wand Company Star Trek Communicator

Antenna Grille Replacement

Use this guide to replace the Antenna Grille for the Wand Company Star Trek Communicator.

Written By: hans flores



INTRODUCTION

This detailed guide will cover the particulars on how to replace the Antenna Grille in the event it becomes damaged or does not open.



TOOLS:

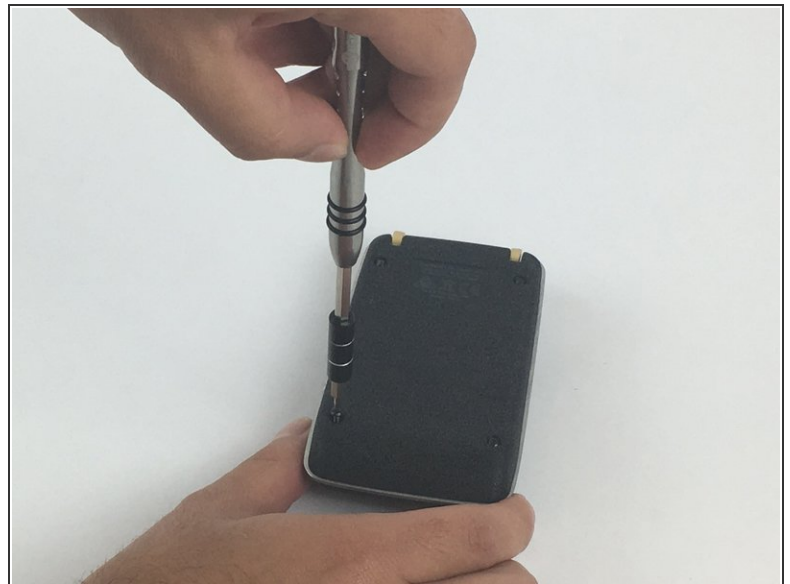
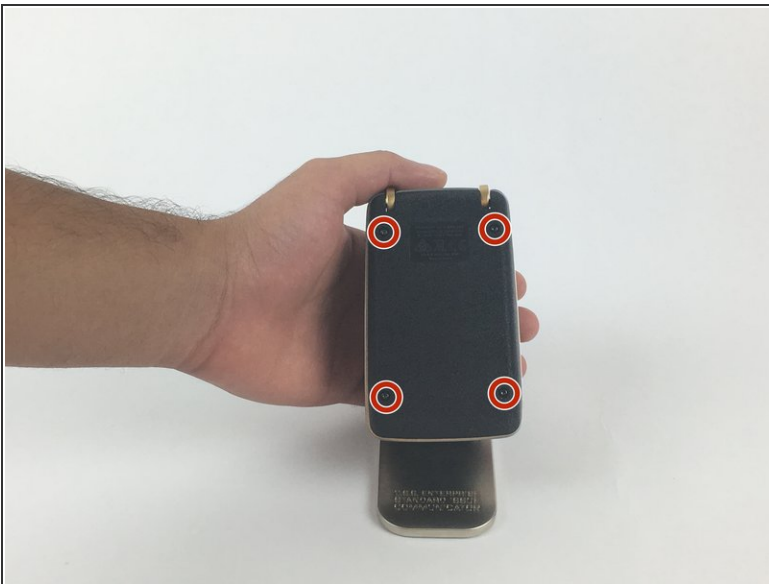
- [64 Bit Driver Kit](#) (1)
-

Step 1 — Antenna Grille



- Power off the Star trek Bluetooth Communicator before disassembling by holding down the left button for five seconds. A "woosh-down" sound indicates the power is going off, and no lights will blink.

Step 2



- Remove the four T6 Torx screws (1.70mm) located on the back of the device.
- Remove the black plastic cover by gently pulling it.

Step 3



- Remove the protective foam located around the speaker and charging magnets.
- ⓘ Be careful not to lose the two magnets located between the microphone and the speaker. The magnets can be easily removed if they come in contact with other magnetic materials. Use non-magnetic tools if possible.

Step 4



- Remove the two Phillips PH0 (0.9mm) screws located to the side of each magnet.

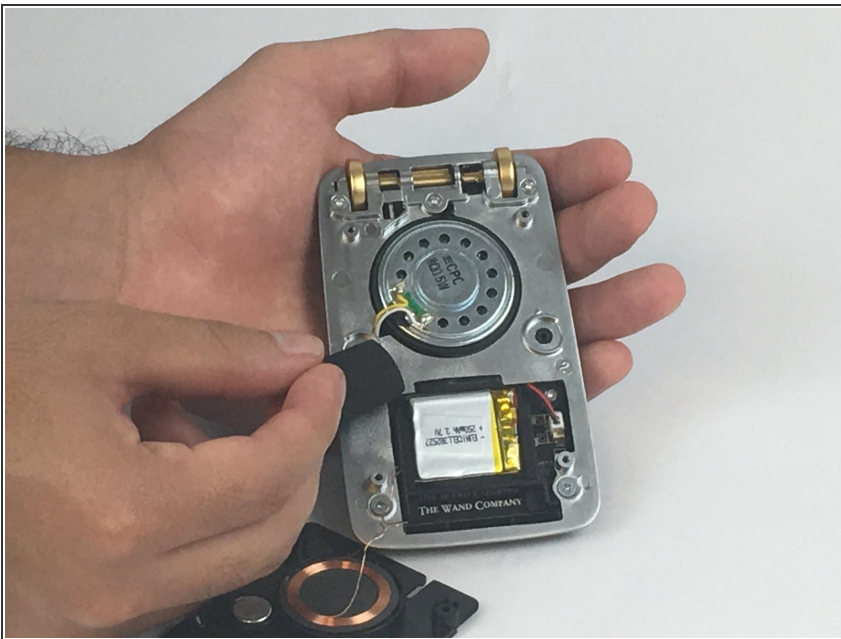
Step 5



- Remove the black cover.

⚠ Do not try to completely separate the black cover from the rest of the device since there are thin wires attached to the speaker and microphone.

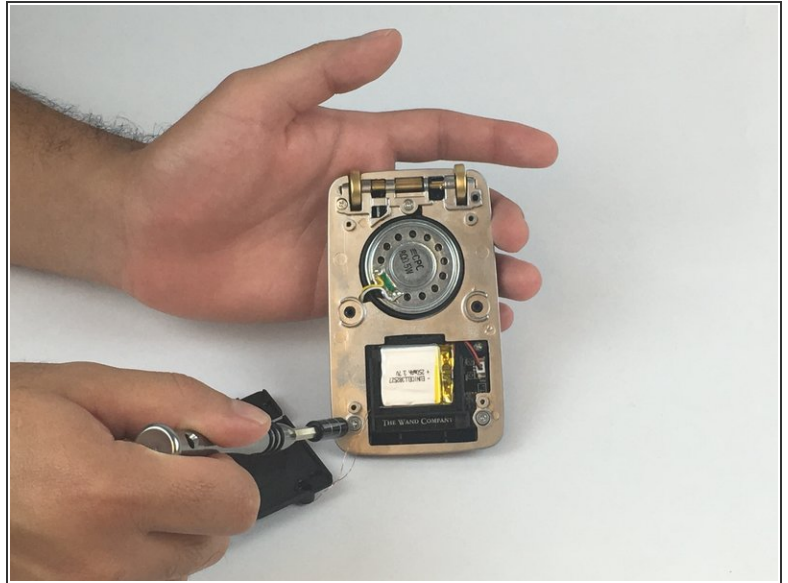
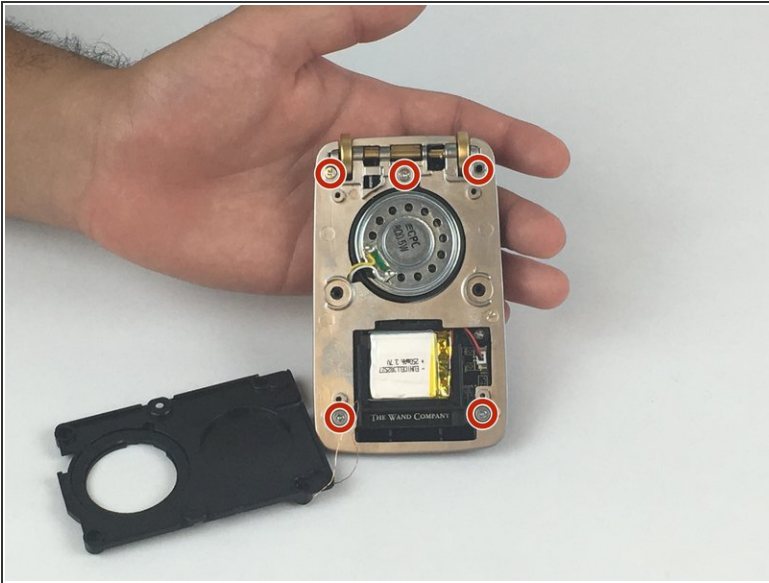
Step 6



- Remove the protective foam attached to the battery.

ⓘ The protective foam may be adhered to the underside of the plastic cover.

Step 7



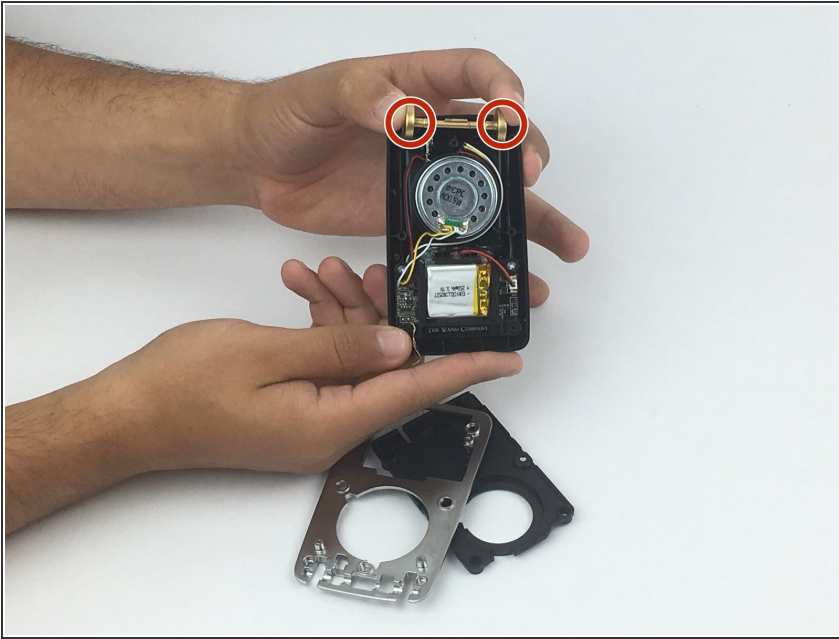
- Remove the five Phillips PH0 (0.9mm) screws located at the top and bottom of the silver plate. The three upper screws are different lengths and gauge than the lower two.

Step 8



- Remove the silver plate.
 - Carefully pivot and/or flip the midplate so as not to put stress on the thin wires. You can gently seat the midplate onto the plastic cover to keep them together securely.
- ⚠ Be careful not to lose the two hinge pins with plastic sleeves, located on the outer hinges of the antenna grill. If removed from their location, put them gently back into place. They must be positioned properly before the steel midplate is put back in place.

Step 9



- Remove the antenna grill.
- ⚠ Be careful of the plastic "brake" sleeve that mates with a triangular protrusion on the hinge spindle. The brake sleeve is spring-loaded, and is what gently holds the antenna in the open or closed position.

To reassemble your device, follow these instructions in reverse order.