



# DeWalt DW938 Clam Shell Replacement

How to separate the Clam Shell from the DeWalt DW938.

Written By: Christopher Chin



---

## INTRODUCTION

This guide will demonstrate how to separate the Clam Shell from the DeWalt DW938.

---



### TOOLS:

- [T10 Torx Screwdriver](#) (1)
  - [Sharp knife](#) (1)
-

## Step 1 — Clam Shell

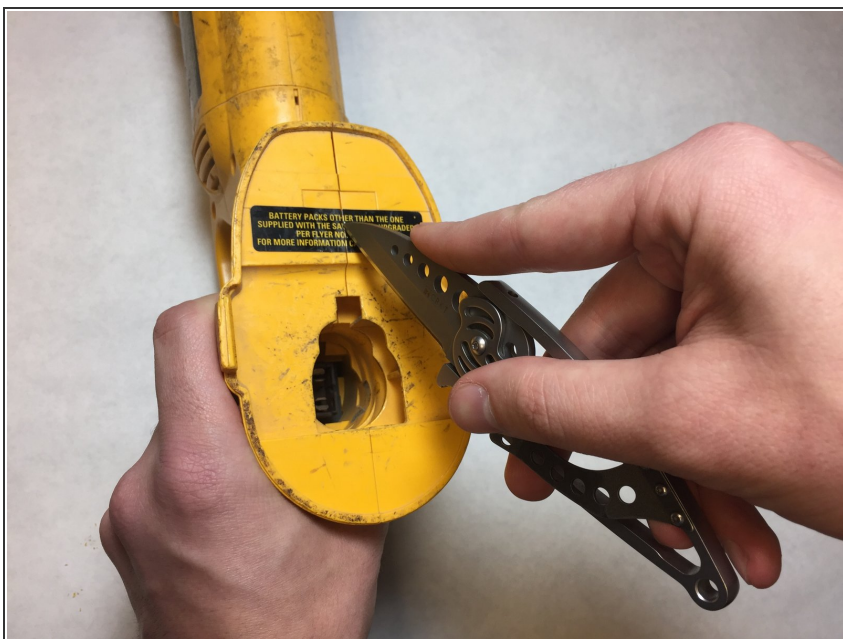


- Use a torque bit screw driver to remove the T10 18.3 mm screw on the handle.
- Use a torque bit screw driver to remove 6 T10 21.5 mm screws on the handle.

⚠ Insure power source is removed from tool.

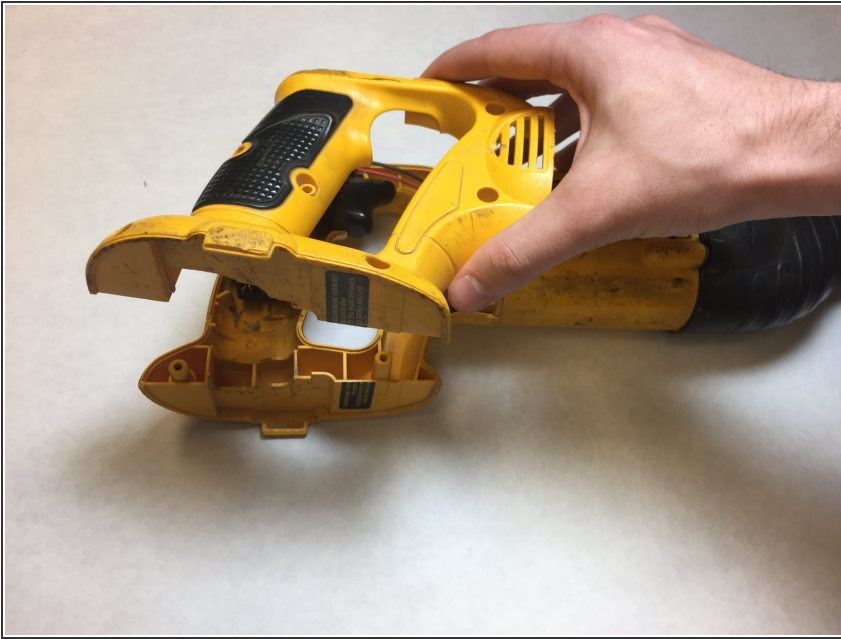
⚠ Insure blade is removed from tool.

## Step 2



- Carefully cut the safety sticker with a blade along the seam.

### Step 3



- Remove the Clam Shell from the handle unit.

To reassemble your device, follow these instructions in reverse order.