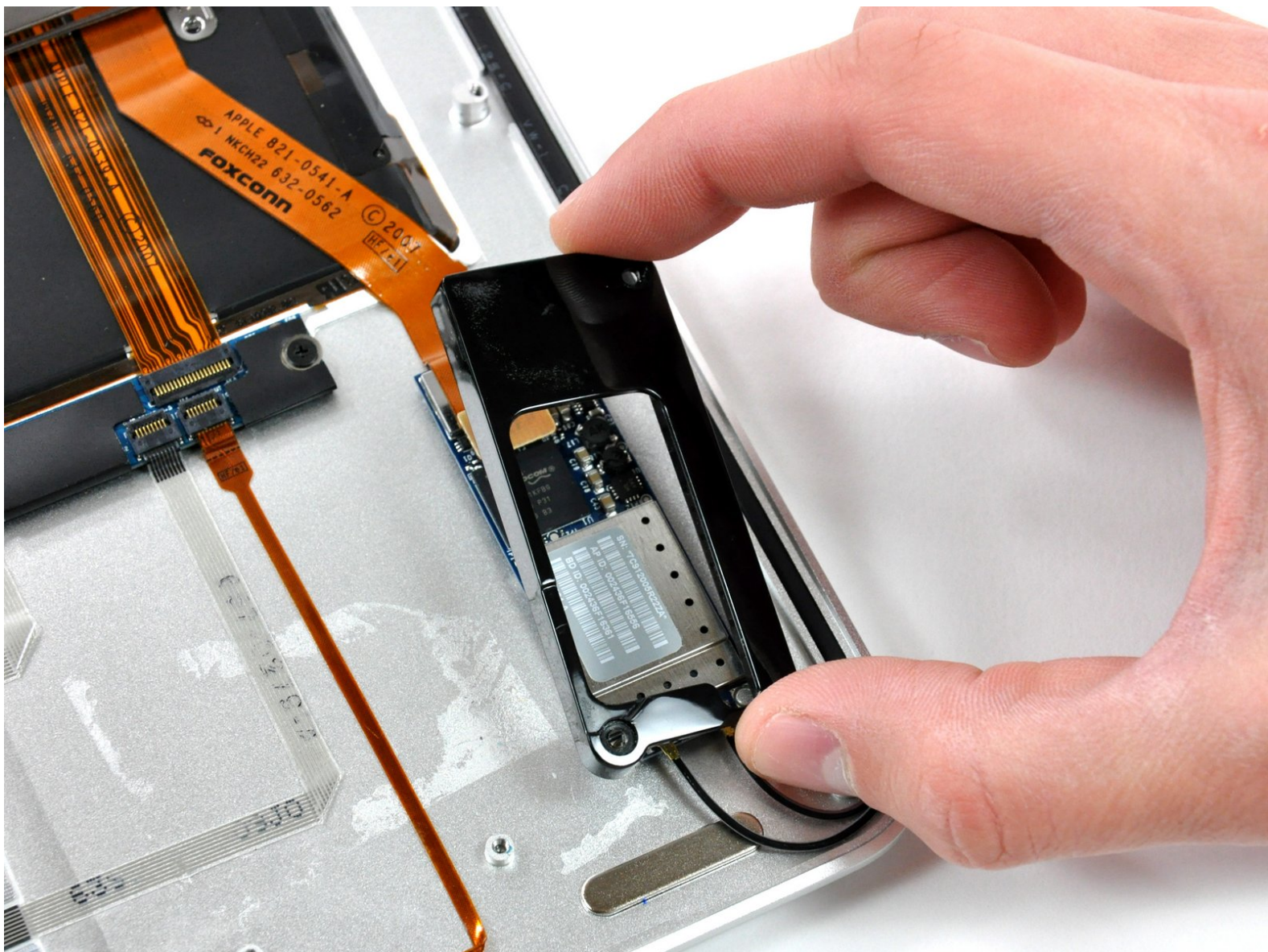




# MacBook Air Models A1237 and A1304 AirPort/Bluetooth Bracket Replacement

Written By: Walter Galan



## INTRODUCTION

Replace the black plastic bracket holding your AirPort/Bluetooth board to the upper case.



### TOOLS:

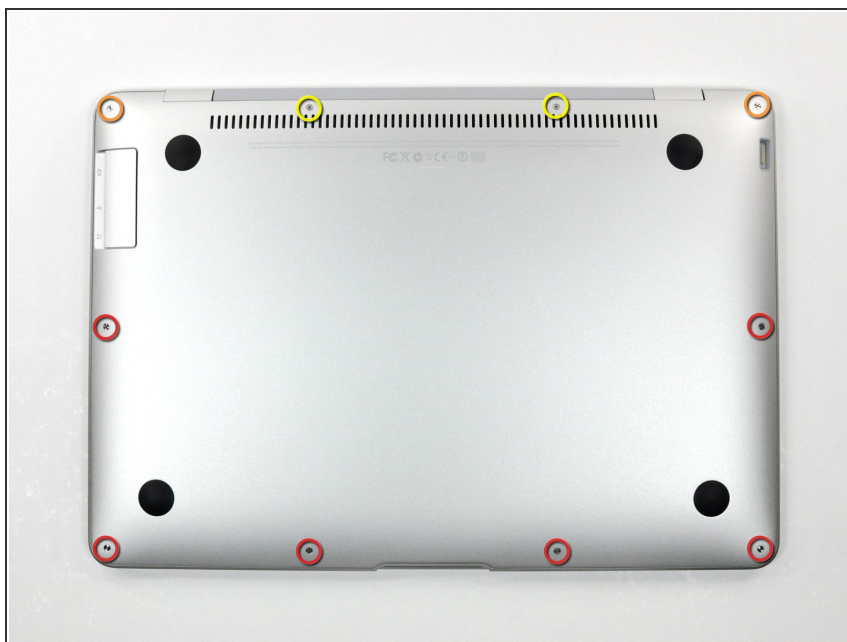
- [Phillips #00 Screwdriver](#) (1)
- [Spudger](#) (1)




### PARTS:

- [MacBook Air Airport/Bluetooth Bracket](#) (1)

## Step 1 — Lower Case



 Unplug your MacBook Air and power it off before you proceed.

- Remove ten Phillips screws securing the lower case to the MacBook Air:
  - Six 2.8 mm screws
  - Two 3.8 mm screws
  - Two 5.4 mm screws

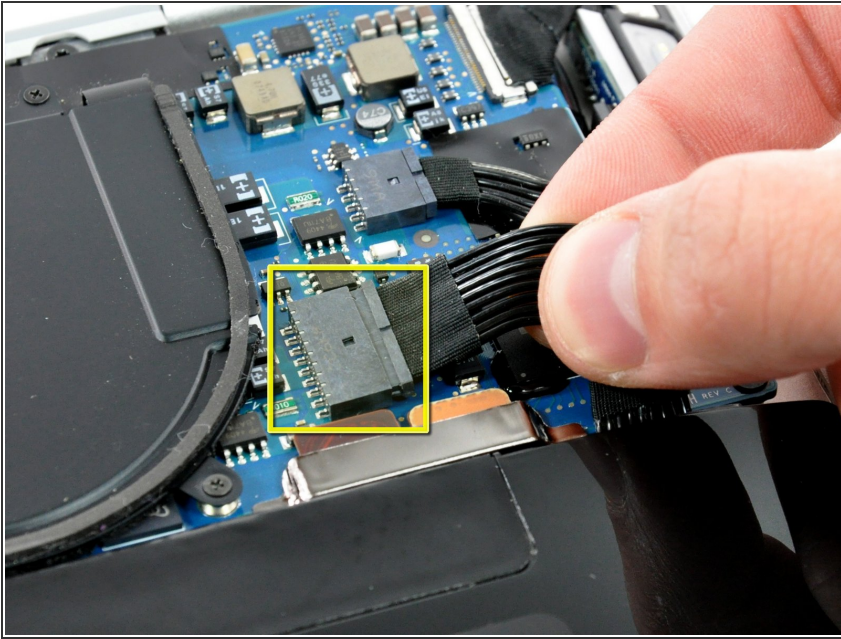
## Step 2



- Slightly lift the lower case near the vents and push it toward the rear of the computer to free the mounting tabs.



## Step 3 — Battery



- Disconnect the battery connector by pulling it straight out of its socket.

## Step 4



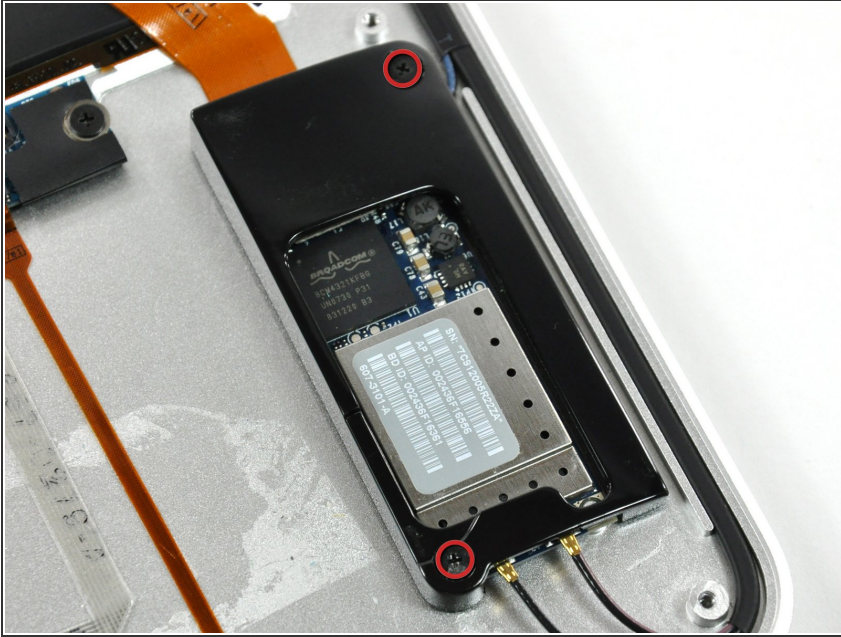
- Remove the following nine screws securing the battery to the Air:
  - Four 2.9 mm Phillips.
  - Four 3.8 mm Phillips.
  - One 7.2 mm Phillips.

## Step 5



- Lift the battery out of the Air.
- ☑ If you're installing a new battery, you should [calibrate](#) it after installation:
  - Charge it to 100%, and then keep charging it for at least 2 more hours. Then, unplug and use it normally to drain the battery. When you see the low battery warning, save your work, and keep your laptop on until it goes to sleep due to low battery. Wait at least 5 hours, then charge your laptop uninterrupted to 100%.
  - If you notice any unusual behavior or problems after installing your new battery, you may need to [reset your MacBook's SMC](#).

## Step 6 — AirPort/Bluetooth Bracket



- Remove the two Phillips screws securing the AirPort/Bluetooth bracket to the upper case.

## Step 7



- Lift the AirPort/Bluetooth bracket out of the upper case.

To reassemble your device, follow these instructions in reverse order.