



# Samsung Galaxy S6 Active Rear Camera Replacement

Use this guide to remove and replace the rear...

Written By: Lucia Valbuena



# INTRODUCTION

Use this guide to remove and replace the rear camera lens from your phone.

---

## TOOLS:

[iFixit Opening Tool](#) (1)

[iOpener](#) (1)

[Suction Handle](#) (1)

[Tweezers](#) (1)

[JIS Driver Set](#) (1)

---

## Step 1 — SIM Card



- Insert your fingernail or a plastic opening tool into the pivot on the side of the SIM tray.
- Pry open the tray to get it out of the socket.

## Step 2



- Remove the SIM tray with SIM card from the phone.

## Step 3 — Display Assembly



- Heat the front face (sides, top, bottom) of the phone with the iOpener, a hair dryer, or a heat gun for 60 seconds to loosen the adhesive around the edge of the glass.

ⓘ If using an iOpener, heat it in a microwave for thirty seconds.

## Step 4



- Attach a suction cup to the lower half of the screen.

## Step 5



- Using the suction cup, pull gently the lower half of the panel.

⚠ If you pull too hard you may break the display. If you still feel resistance repeat Step 3, leaving the iOpener on longer.

## Step 6



- Once you've opened a large enough gap, insert a plastic tool at the bottom, between the glass and the rest of frame of the phone.
- Slide the plastic opening tool around the screen, prying the display gently away from the body

## Step 7



- Pull the lower half of the screen screen with the suction cup while holding down the frame of the phone to separate both components.

⚠ Only lift the lower part of the screen. It is connected with a clip to the top of the motherboard and can rip off if you pull too hard.

## Step 8



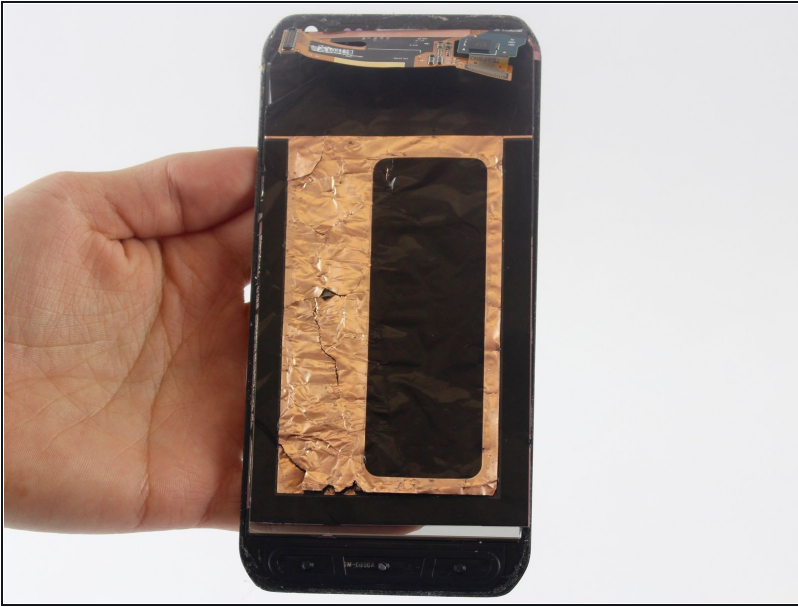
- Once the glass is off, you will see a small clip covering the screen connection to the motherboard at the top of the phone. Use [tweezers](#) to grab the clip by the crease on its side and pull it out.

## Step 9



- Undo the screen connection with a plastic tool.

## Step 10



- Remove the display assembly (LCD and Digitizer).

## Step 11 — Battery



- Use the Phillips Head Screwdriver sized PH000 to remove the sixteen 4mm screws from the frame.

## Step 12



- Put a little pressure on the top, on the bottom, and on the sides of the phone to separate the rear case.
- ① You will hear the clips start undoing themselves.

## Step 13



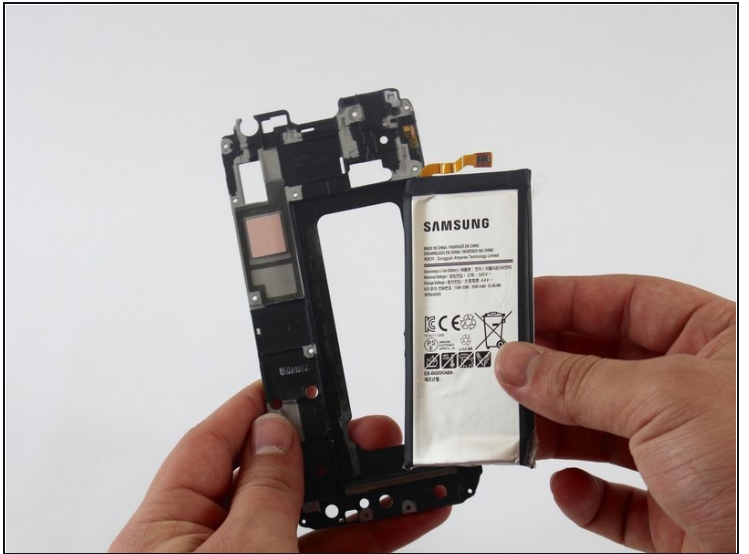
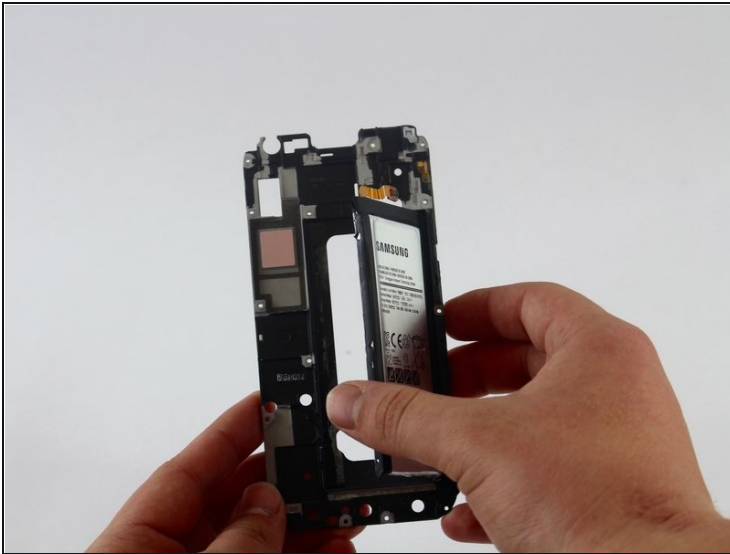
- Once all the clips have popped, pull out the rear case to separate it from the frame with the battery.
- The battery will be on the back side of this frame.

## Step 14



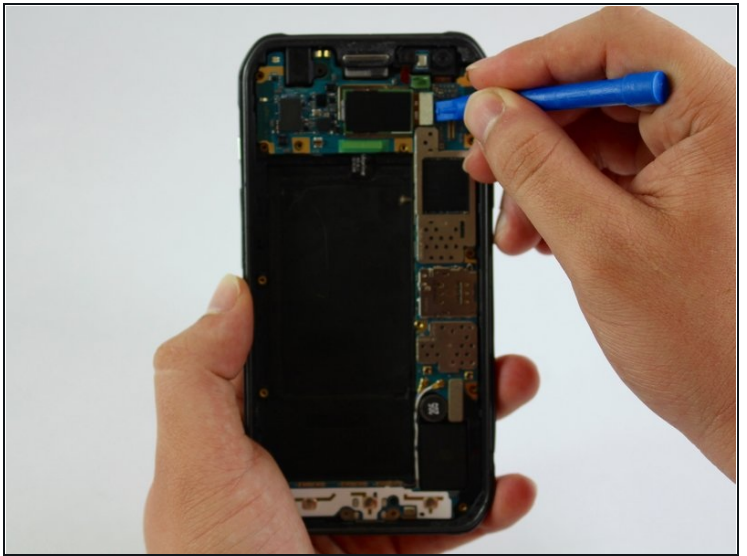
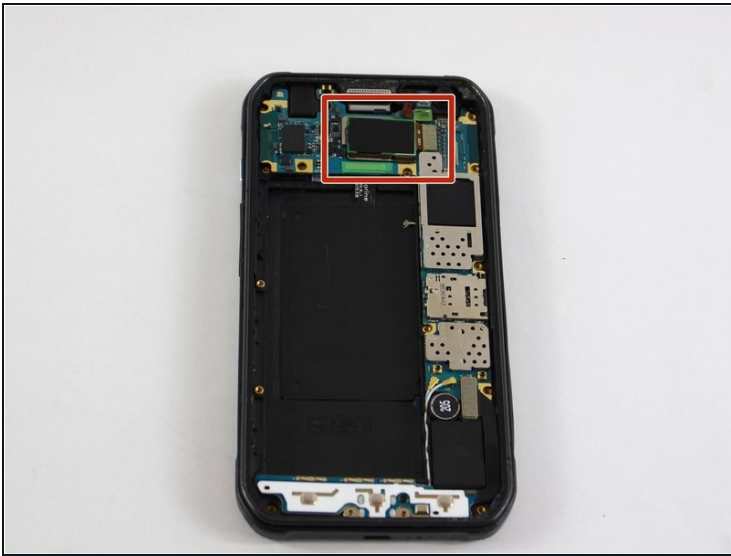
- Insert a plastic opening tool on the side of the frame and pull out the battery.

## Step 15



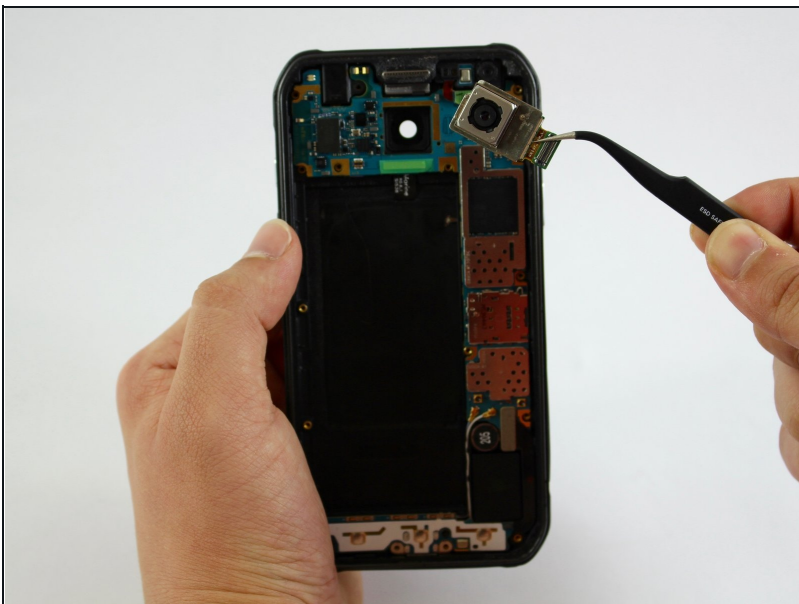
- Remove the battery from the frame.

## Step 16 — Rear Camera



- The rear camera will be attached to the motherboard on the rear case.
- Use a plastic tool to undo the connection of the rear camera from the motherboard.

## Step 17



- Use the [tweezers](#) to remove rear camera from motherboard.

---

To reassemble your device, follow these instructions in reverse order.