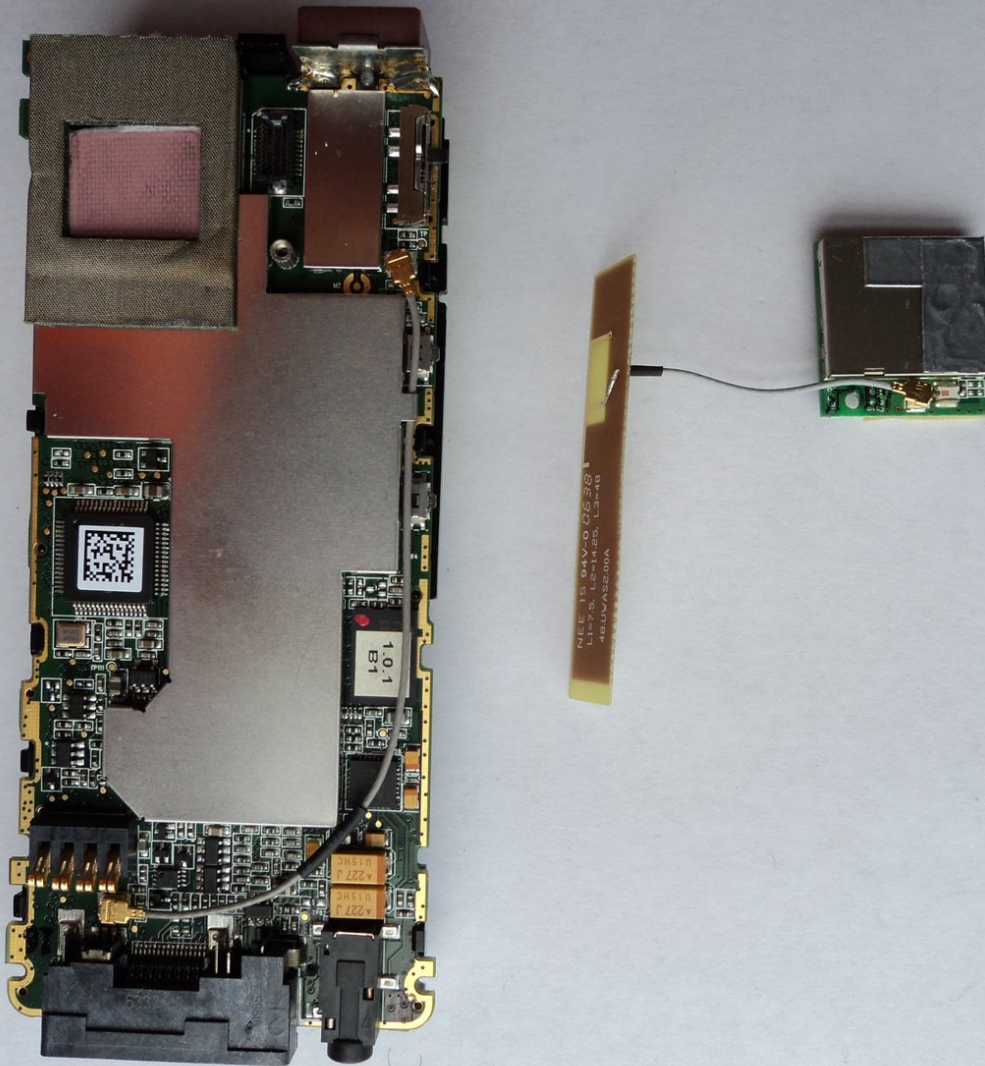




Disassembling Sirius Stiletto 100 Internal Antenna

This guide demonstrates how to remove the internal antenna from the Sirius Stiletto 100.

Written By: Trey





TOOLS:

- [Phillips #0 Screwdriver](#) (1)
 - [Spudger](#) (1)
-

Step 1 — Front Cover



- Remove the battery (which also functions as the back cover) from the device. This step is not explicitly shown, but a picture without the battery cover shows the device post-battery removal.

Step 2



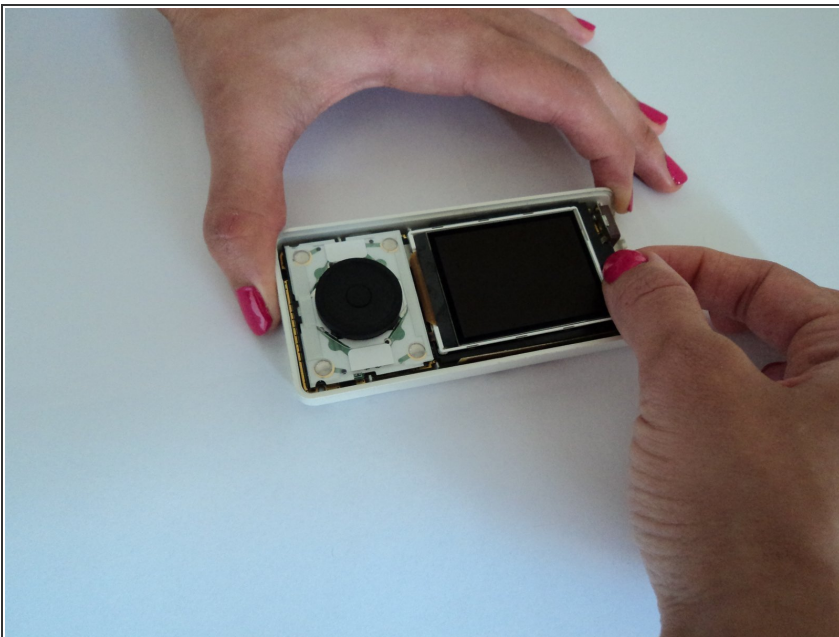
- Use a Philip's head screw driver to remove the screws from the case.
- Place the screws in a small container to avoid losing them.

Step 3



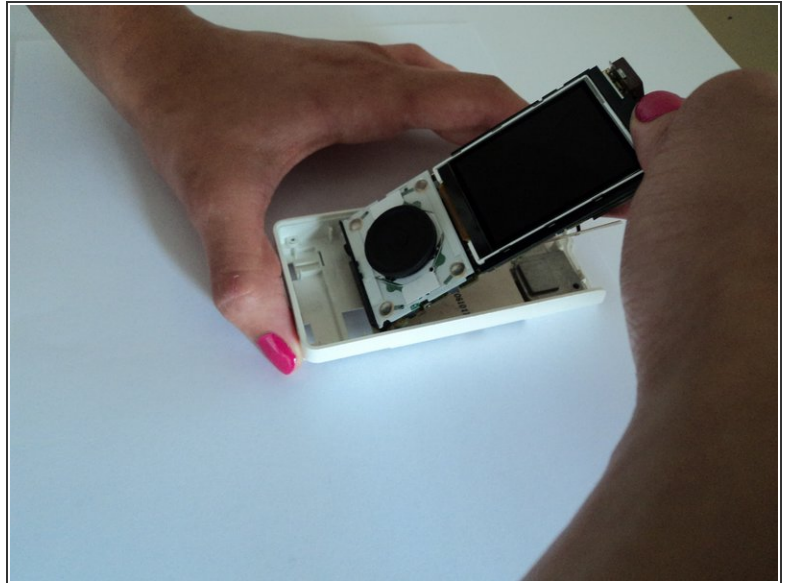
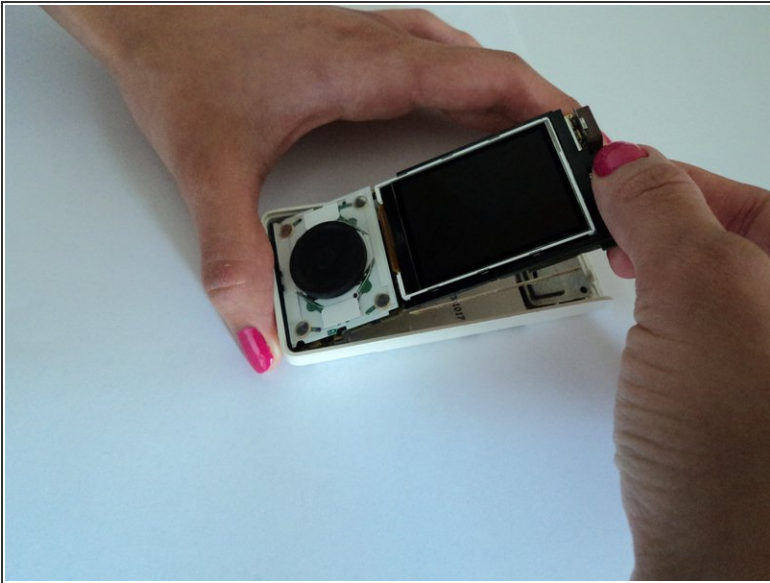
- Remove the front cover.
 - First, insert a small pry bar where the black front cover and white back cover meet.
 - Begin prying the black plastic up, slowly moving around to the bottom and other side.
 - At an angle, carefully pull up on the front cover separate the two pieces.
- Excellent! Now you have removed the front cover!

Step 4 — Circuit Board



- While looking down at the device, place your index finger at the top of the circuit board and your thumb on the device screen.

Step 5



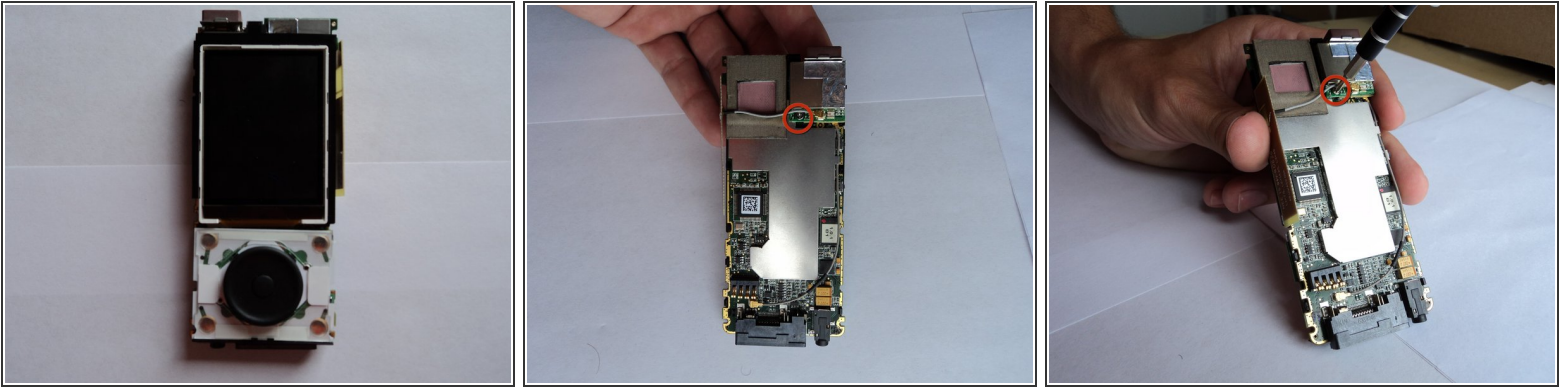
- Using your fingers, gently pull the top of the circuit board up toward you while also sliding the bottom of the circuit board away from the bottom of the Sirius Stiletto 100 back cover.

Step 6



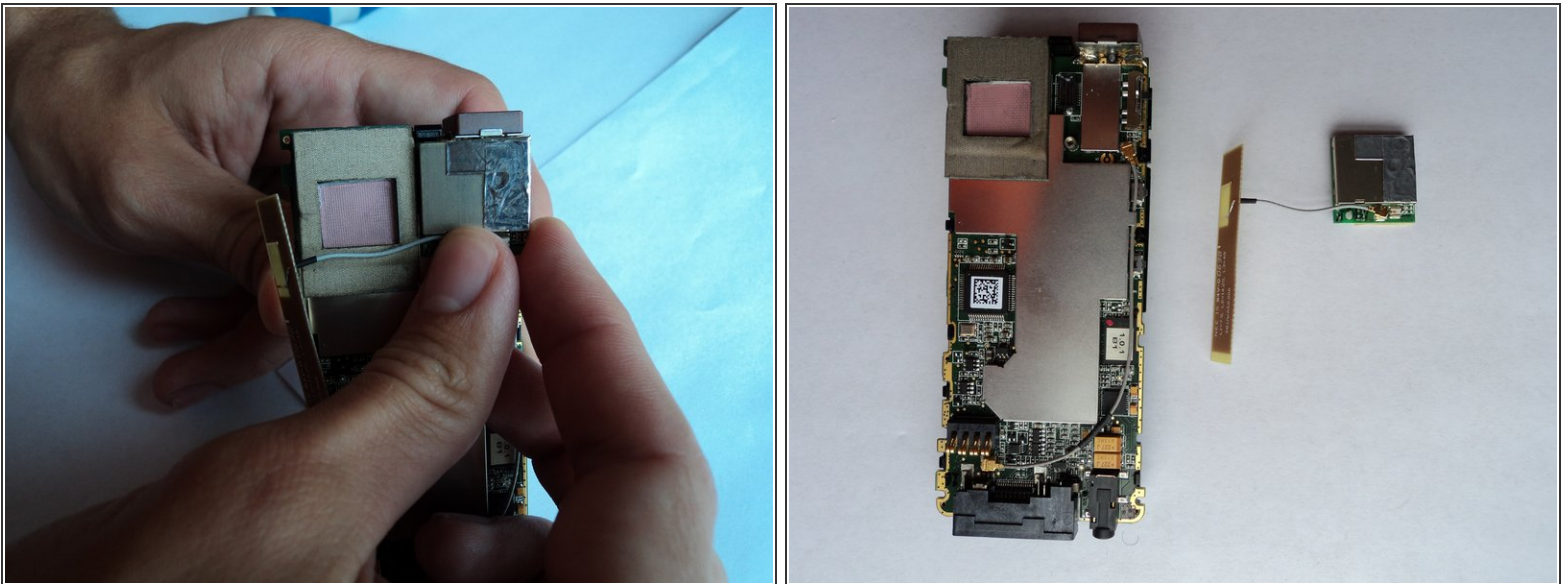
- Congratulations! You have successfully removed the internal circuit board from the Sirius Stiletto 100 back cover.

Step 7 — Internal Antenna



- Flip the circuit board over to look at the back side, so that LCD screen is facing away from you.
- Use a Phillips's head screwdriver to remove the screw from the back of the internal antenna.

Step 8



- Use your fingers to pry the internal antenna off of the circuit board. You may need to wiggle it back and forth to successfully remove it.
- Woohoo! You have removed the internal antenna!

To reassemble your device, follow these instructions in reverse order.