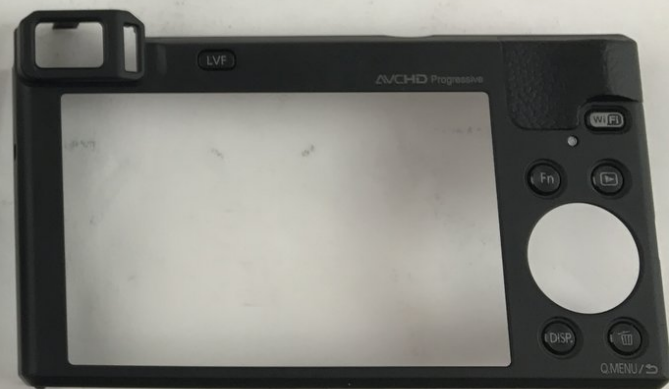




# Panasonic Lumix DMC-ZS40 LCD Screen Replacement

This guide will explain how to replace the LCD Screen of the Panasonic Lumix DMC-ZS40 camera.

Written By: Osayamen Orhue



## INTRODUCTION

The LCD screen might need to be replaced due to either physical damage or hardware malfunction. It is a fairly simple process but take care not to damage the motherboard when replacing the LCD screen.



### TOOLS:

- [Phillips #000 Screwdriver](#) (1)
  - [Tweezers](#) (1)
  - [Spudger](#) (1)
-

## Step 1 — Battery



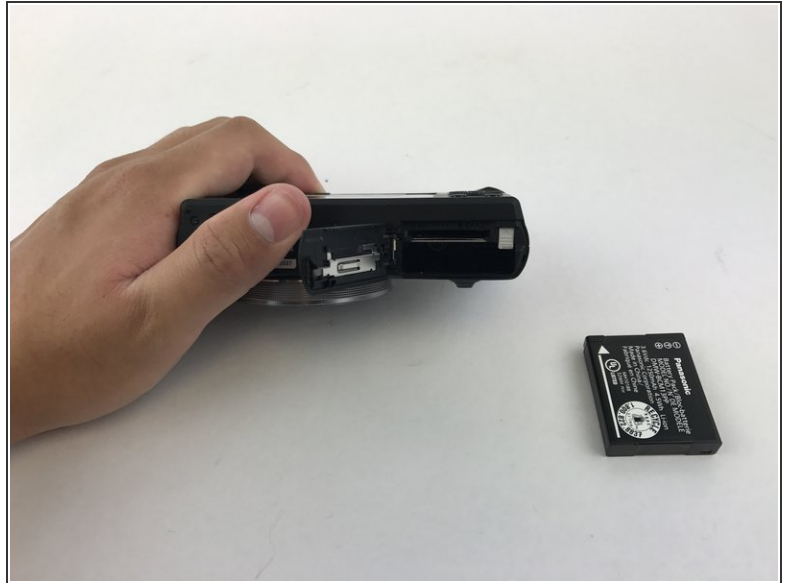
- Find the battery/memory card door on the bottom right of the camera.
- Use your finger or screw driver to slide the grey latch from the locked position to the open position. This will swing open the door.

## Step 2



- Push up on the right-hand-side tab to release the battery.

### Step 3



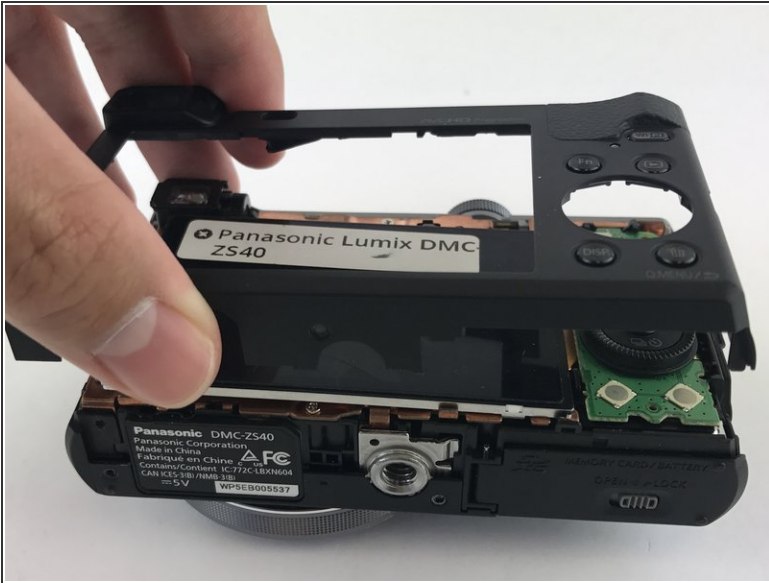
- Remove battery from camera.

### Step 4 — LCD Screen



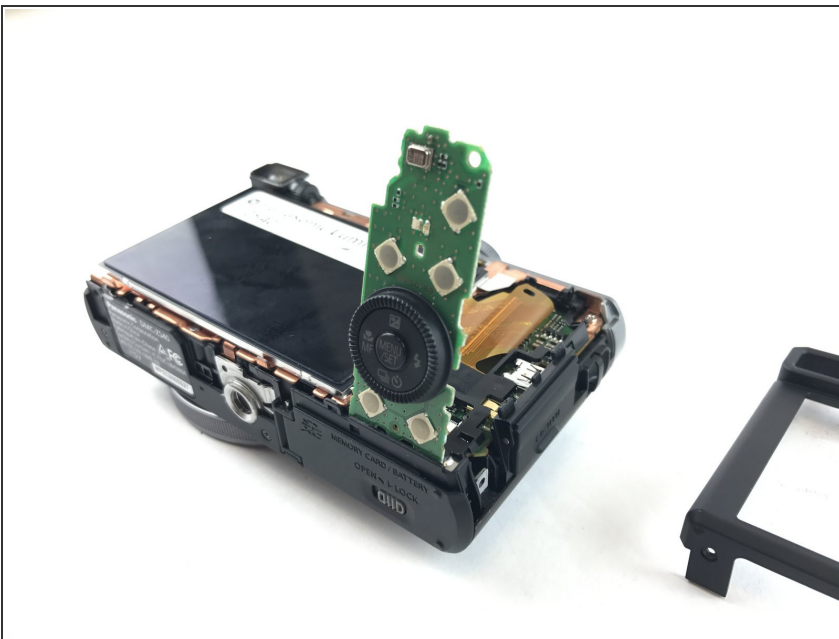
- Unscrew the five 3mm screws located around the sides of the camera using a PH000 bit or Phillips 000 Screwdriver.

## Step 5



- Pry off the back casing of the camera and place the camera face down.

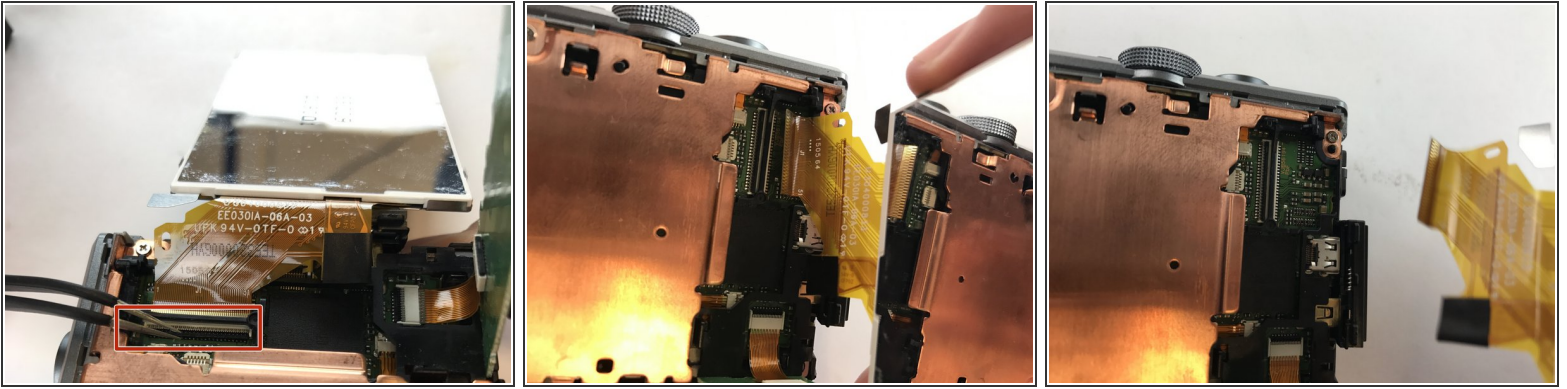
## Step 6



- Flip the right hand side control dial circuit board up.



## Step 7



- Turn the LCD screen over to the side exposing the connection to the motherboard.
  - Remove the display data cable connecting the LCD screen to the motherboard. Using tweezers, pry up the black retaining flap then gently pull the display data cable free.
- ⚠ Be careful when handling any display data cables in the camera as they are prone to tearing.
- 🔧 To close for reassembly, slide the display data cable back into the ZIF connector and close the retaining flap.

To reassemble your device, follow these instructions in reverse order.