



Sony Xperia Z3 Battery Replacement

Use this guide to replace the old battery in...

Written By: Dominik Schnabelrauch



INTRODUCTION

Use this guide to replace the old battery in your Sony Xperia Z3.

TOOLS:


iOpener (1)
Suction Handle (1)
iFixit Opening Picks (Set of 6) (1)
Tweezers (1)
Spudger (1)

PARTS:

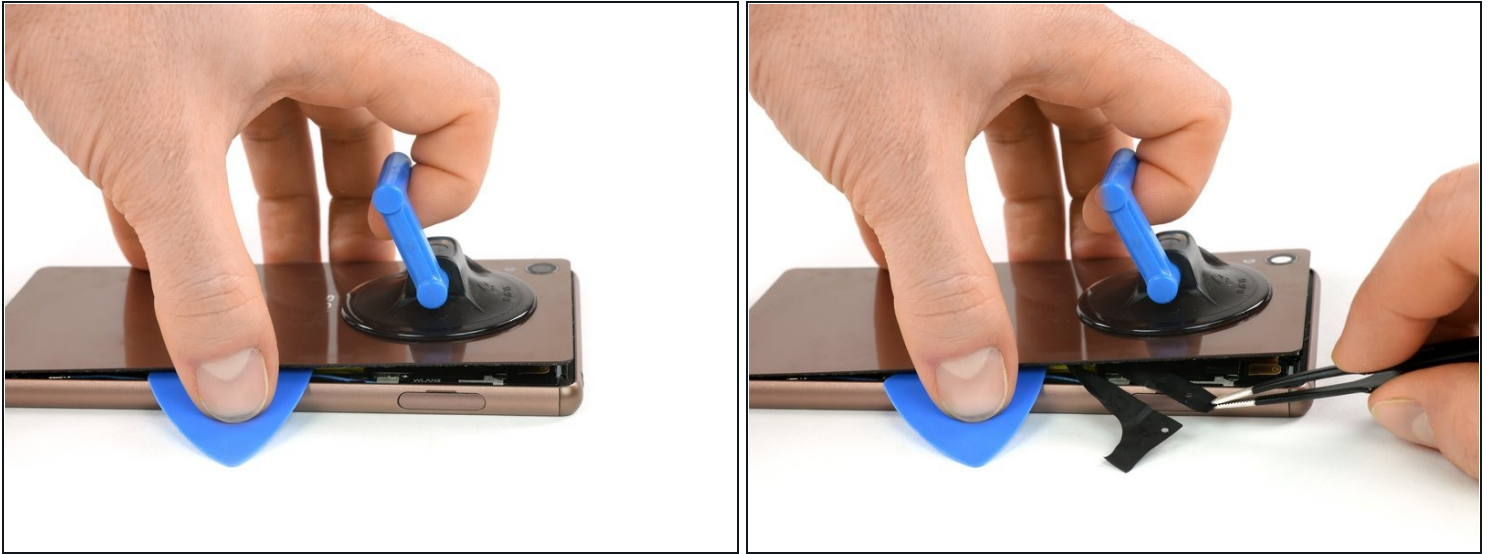
Sony Xperia Z3 Battery (1)
Sony Xperia Z3 NFC Antenna (1)

Step 1 — Back Cover



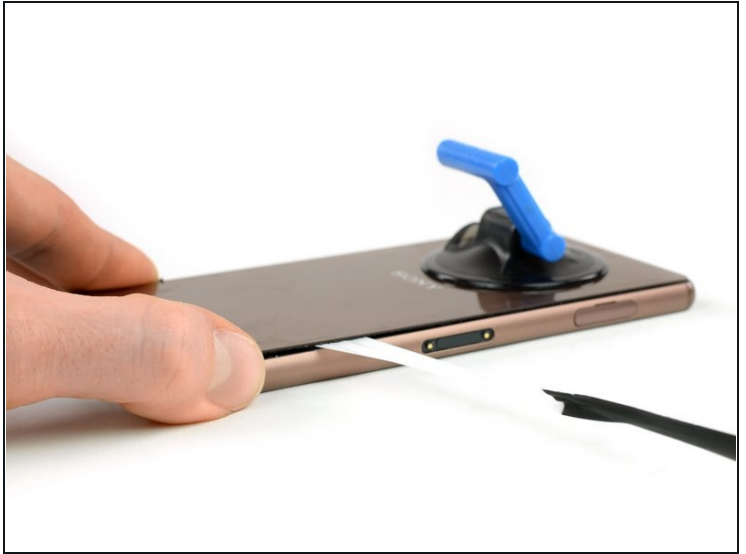
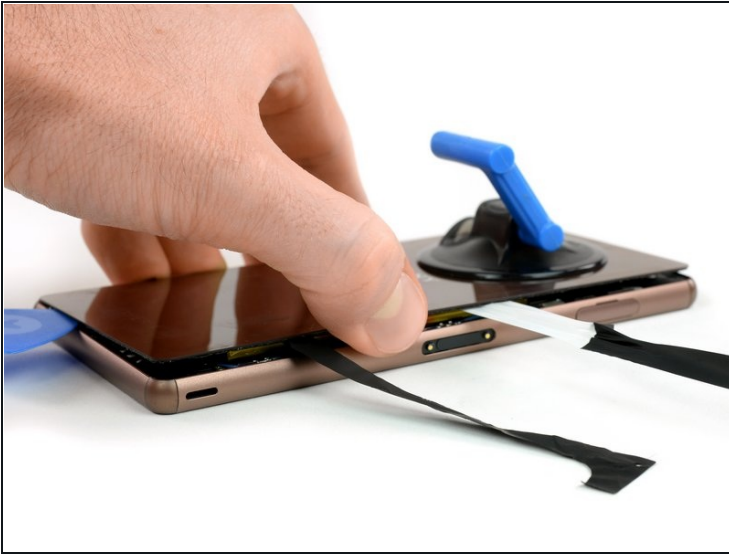
- Heat the back cover of your Xperia Z3 to loosen the adhesive underneath.
 - ⓘ If you use an iOpener, follow these [instructions](#) for use.
 - Lift up the back cover with a suction handle and put an opening pick in the gap.
 - Move the pick carefully around the edges to loosen the adhesive on every side of the phone.
-  **Don't put the pick in too deep under the back cover to not damage any parts inside the phone.**

Step 2



- ① There are two adhesive strips in the center of the phone connecting the rear case to the battery, you'll need to remove them to open the phone.
- When the edges of the cover are free from adhesive, tilt it to allow access to the battery tabs.
- Use [tweezers](#) to pull the two black adhesive strips out of the phone but don't pull just yet.

Step 3



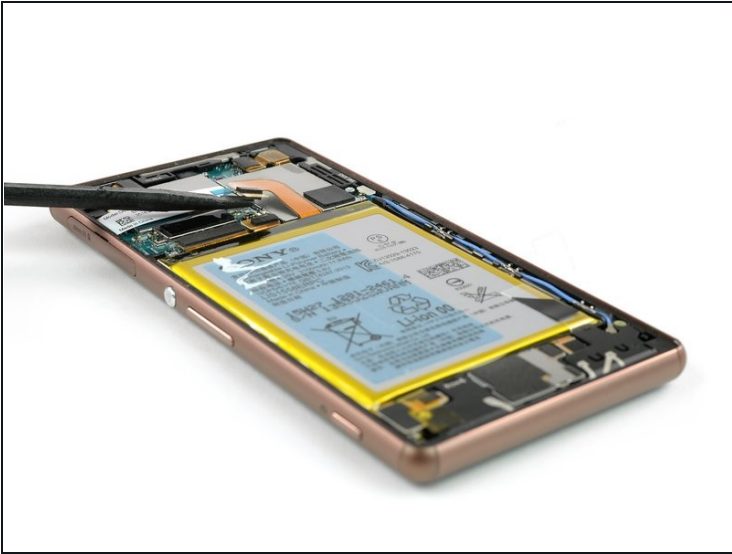
- Gently pull out both of the adhesive tabs out of the phone, parallel to the rear cover.
- ① If the adhesive tabs break, try to use a thin flat plastic tool such as a [plastic card](#) to remove the last of the adhesive. If the adhesive is stubborn, heat it with an iOpener or hair dryer and pry again.

Step 4



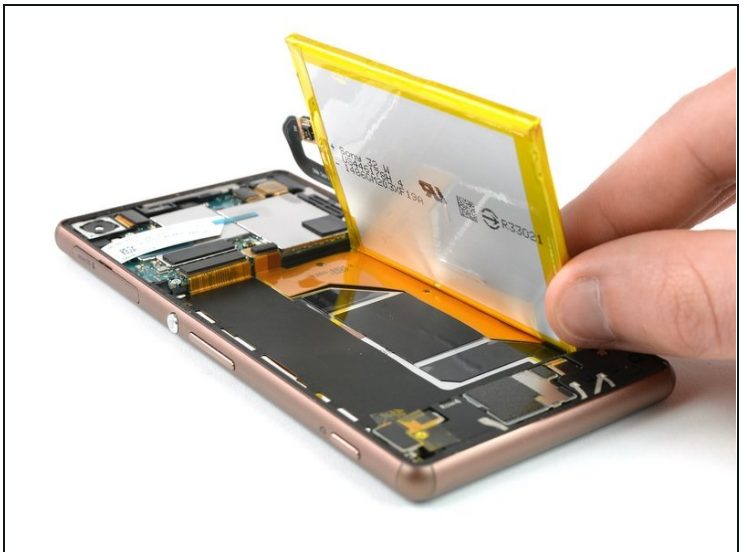
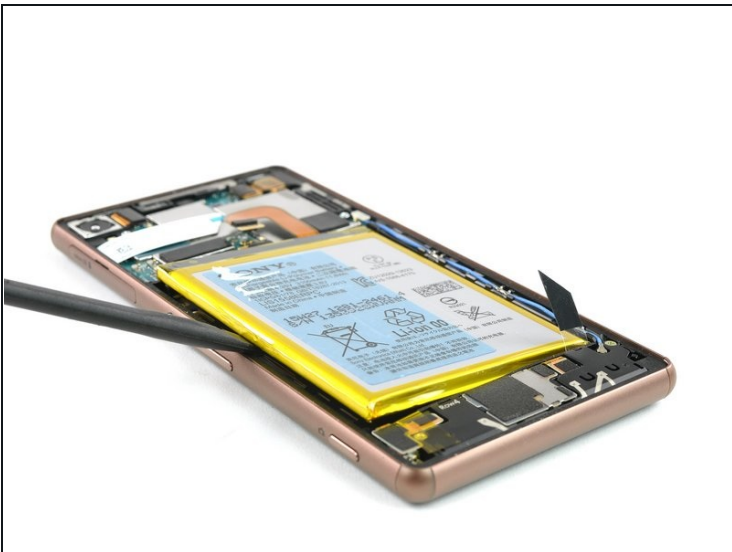
- After pulling out the adhesive tabs, you can lift the back cover and remove it.

Step 5 — Battery



- Unplug the battery flex connector.
- Use a tweezer to gently pull off the adhesive strip on the bottom part of the battery.

Step 6



- Use a spudger on the left side of the frame to lever out the battery.
⚠ Be careful with the spudger - there are cables beneath the battery!
- Remove the battery.

To reassemble your device, follow these instructions in reverse order.