



Sony Cyber-shot DSC-W230 LCD Display Screen Replacement

Installation of a replacement LCD screen.

Written By: Michael Henry



INTRODUCTION

This guide will explain how to take the necessary components of the camera apart in order to replace a damaged LCD display screen.

TOOLS:

- [Fingers](#) (1)
 - [iFixit Opening Tools](#) (1)
 - [Flathead 3/32" or 2.5 mm Screwdriver](#) (1)
-

Step 1 — Separating Camera and Display



- Align the camera so that the side with "4x Optical Zoom" is facing toward you.
- Gently twist the bottom corner clockwise until you feel the side panel unlock.
- Lift off the side panel and set aside.

Step 2



- Rotate the camera 180 degrees to face the side panel with the lanyard loop on it.
- Gently lift the panel vertically until it lifts off

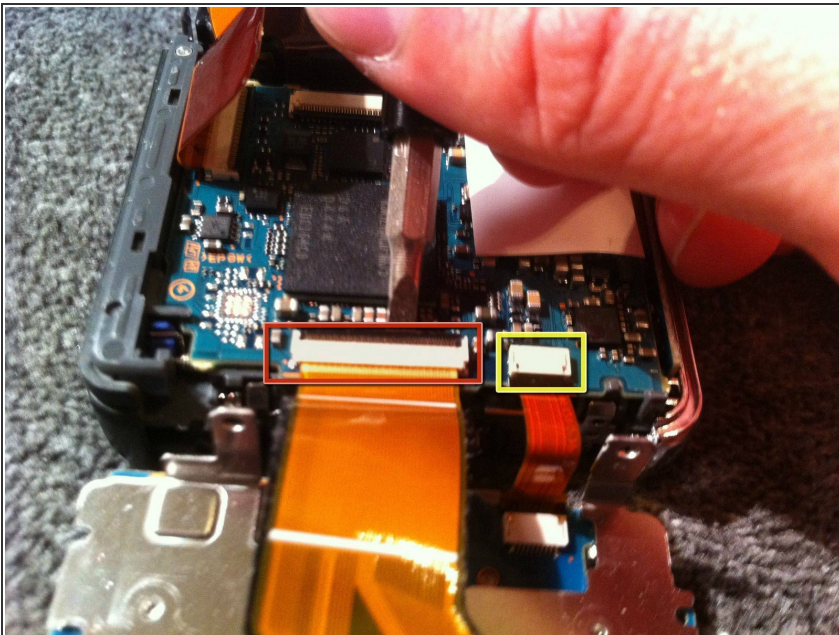
⚠ Take care to not lose the small rectangular portion on the bottom of the panel.

Step 3



- Position the camera so the bottom is facing up and the display away from the surface.
- Gently pry the screen portion from the camera portion with your fingers or a plastic prybar.
- ⚠ Do not fully separate the two components! the screen is attached by two ribbon cables.
- Lay the display flat to expose the circuit board and the display control ribbon cables.

Step 4 — LCD Display Screen



- Using a flat head screw driver gently pry up the tab securing the ribbon cable from the display screen to the camera sensor and battery housing.
- Remove the ribbon cable connecting LCD display to camera sensor and battery housing

- Following the same procedure as above, uninstall the ribbon cable connecting the main camera controls to the camera sensor and battery housing

Step 5



- The LCD display screen is now removed from the camera sensor and battery housing.
- The main camera controls are now removed from the camera sensor and battery housing.

Step 6



- Unsnap LCD display screen from its mount by unsnapping it from the display screen using your finger nail.
- Now the new LCD screen can be installed.

To reassemble your device, follow these instructions in reverse order.