



# Disassembling Sony Cyber-shot DSC-W230

## Exterior Case

Removing the camera's exterior case.

Written By: Alex



---

## INTRODUCTION

This guide will explain how to take off the camera's exterior case.



### TOOLS:

- [64 Bit Driver Kit](#) (1)
-



## Step 1 — Disassembling Sony Cyber-shot DSC-W230 Exterior Case



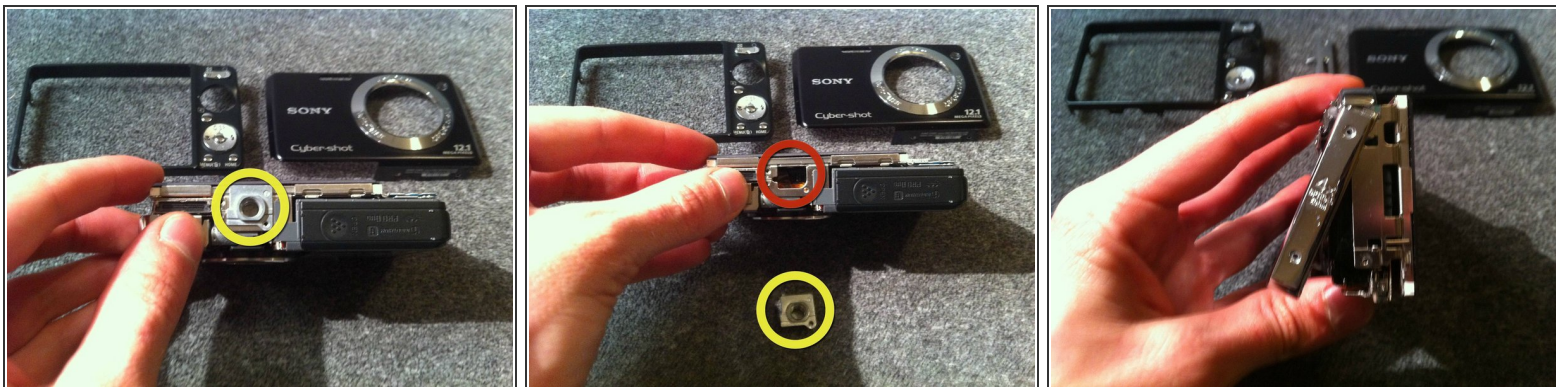
- Begin by placing the camera upside down and removing the three small center screws.
- All screws are the same size and length and can be used interchangeably.

## Step 2



- Turn the camera on its side (Counterclockwise). Remove the two small screws on either side of the silver panel.
- Turn the camera 180 degrees onto its other side and remove the two small screws on either side of the silver panel.

## Step 3



- Locate the camera's tripod mount located on the bottom of the camera.
- Carefully remove the camera's tripod mount and place it aside.
- Be careful not to lose this piece.
- Rotate the silver panel labeled 4x clockwise.

To reassemble your device, follow these instructions in reverse order.