



Samsung Galaxy Tab 2 7.0 Camera Replacement

Replace the main camera on your tablet.

Written By: Katija Tarailo



INTRODUCTION

Cameras can be damaged by water or by physical impact, but it is much easier to replace than you may think. Follow these few simple steps so that you can get back to capturing the world around you on your tablet.



TOOLS:

- [Heavy-Duty Spudger](#) (1)
- [Phillips #000 Screwdriver](#) (1)



PARTS:

- [Galaxy Tab 2 7.0 Rear Camera](#) (1)

Step 1 — Camera



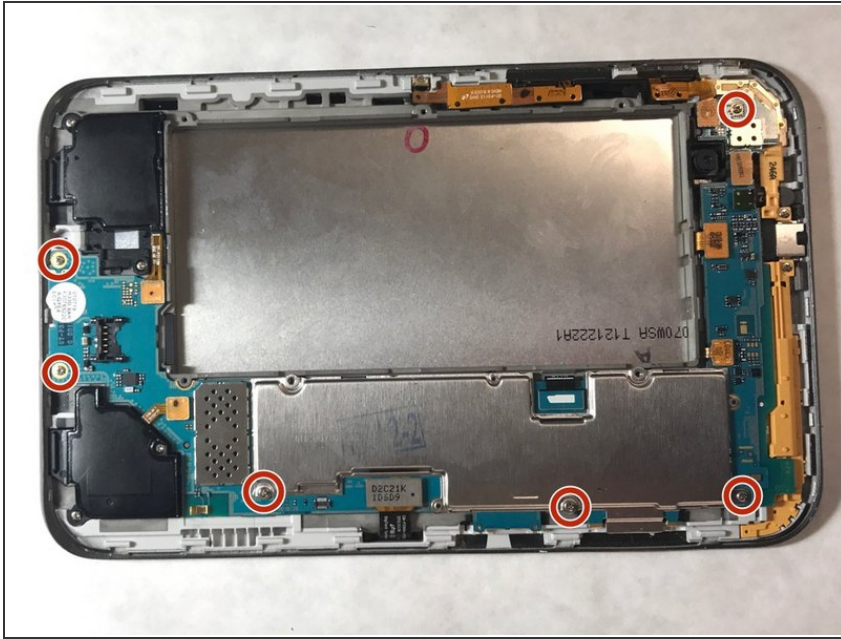
- Using a nylon spudger or a flat plastic opening tool, pry open the back of the device.
- ❗ It is easiest to begin this process by starting at the micro SD card insert, as shown in the pictures.

Step 2



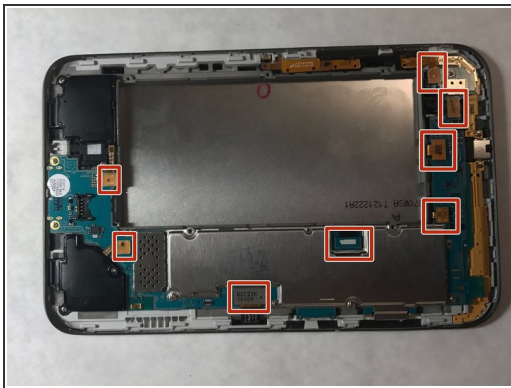
- Using a phillips head screwdriver, remove the 6 4mm screws holding the battery on the device.
- Remove the battery, and set it aside.

Step 3



- Using a phillips head screwdriver, remove the 6 4mm screws holding the motherboard in the device.

Step 4



- Locate the 8 flex cables attached to the motherboard.
- Using a nylon spudger, gently detach each flex cable from the motherboard.
 - ⚠ Be careful when detaching flex cables. Excessive force and sharp objects have the potential to damage these components.
- Lift the motherboard from the device and set it aside.

Step 5



- Locate the camera towards the top of the device.
- Use a nylon spudger to gently lift the camera and remove it from the device.

To reassemble your device, follow these instructions in reverse order.