



Sony Ericsson W350a Battery Replacement

How to replace the battery in a Sony Ericsson W350a phone.

Written By: Parker Stroble





TOOLS:

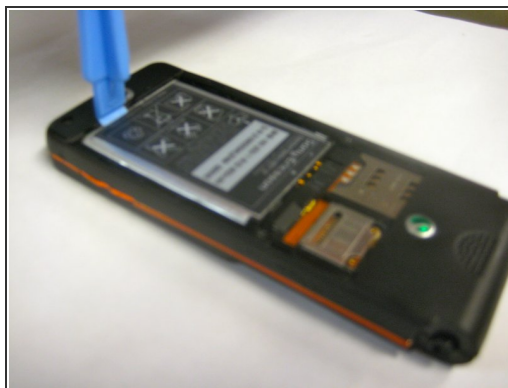
- [iFixit Opening Tools](#) (1)
-

Step 1 — Battery



- Place the phone face down on a flat smooth surface so that the camera, logos, and speaker face up.
- Using the provided notch on the bottom of the back cover, insert a plastic opening tool and lift upwards to remove the back cover of the phone.

Step 2



- Set the cover to the side upon removal.
- Insert the plastic opening tool into the crevice between the camera and the battery of the phone. Using a gentle prying motion, lift the end of the battery and remove.
- After removal, recycle the defective battery appropriately.

To reassemble your device, follow these instructions in reverse order.