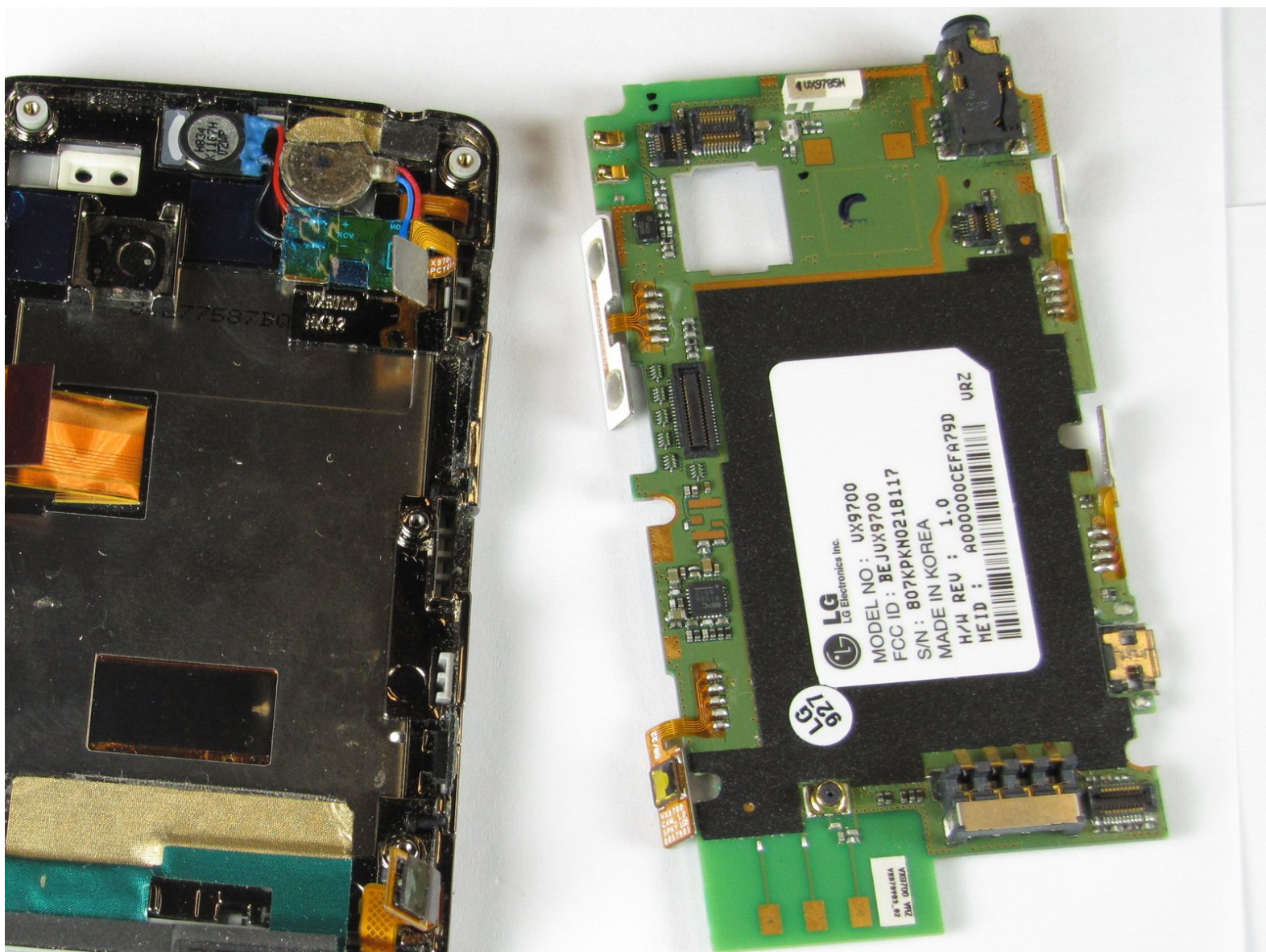




# LG Dare Logic Board Replacement

Replacing a broken logic board in an LG Dare.

Written By: Haoyan Huang



---

# INTRODUCTION

Use this guide to install a new logic board in your LG Dare.



## TOOLS:

- [Phillips #00 Screwdriver](#) (1)
  - [iFixit Opening Tools](#) (1)
-

## Step 1 — Battery



- Remove the back cover by firmly pressing against the raised lip on the back panel. Slide the cover towards the top of the phone.

## Step 2



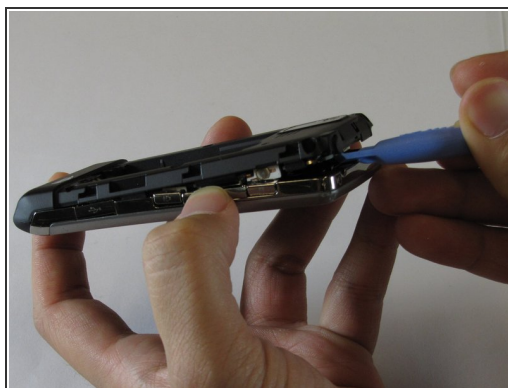
- Remove the battery by placing your fingernail or a opening tool in the recessed edge and lift the battery out.

## Step 3 — Logic Board



- Use the #00 screwdriver to remove the six 4mm phillips screws located around the edges of the phone.

## Step 4



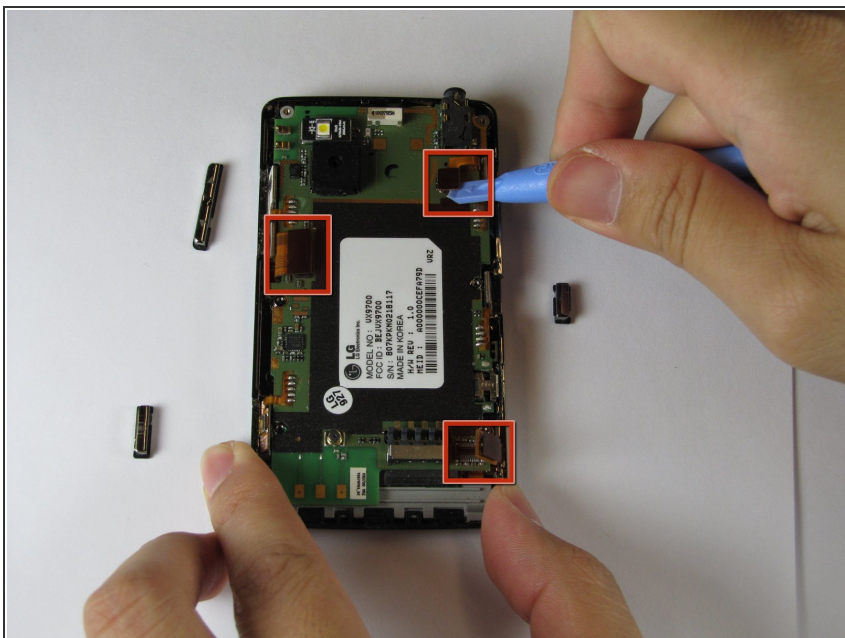
- Lift the back plastic cover off by moving the opening tool around the edges of the phone.
  - Wedging the opening tool in several places on the bottom of the phone will help release small tabs that hold the back to the front frame.
- i** The side buttons may fall out when removing the back plastic.

## Step 5



- Pull off the back plastic panel.
- Remove the buttons from the edge of the frame. The buttons are [lock], [volume control], [speaker], and [camera].

## Step 6



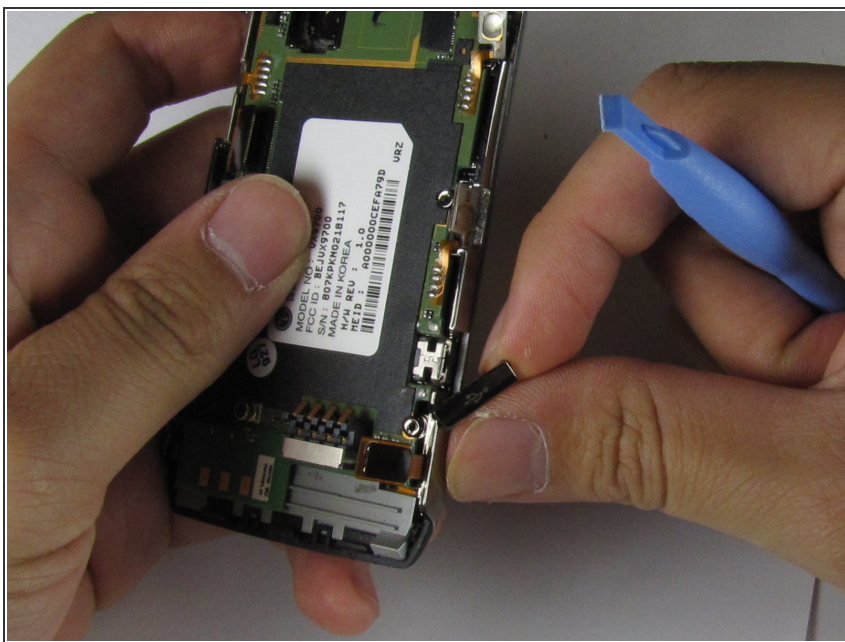
- Disconnect the three ribbon connectors from the motherboard.

## Step 7



- Remove the LED.
- Remove the camera connector.
- Remove the camera sensor from the logic board. Squeeze the sides of the camera sensor firmly and pull straight up.

## Step 8



- Open the USB port cover.

## Step 9



- Use the opening tool to lift up the green logic board in all areas and remove it.
- ⓘ The logic board may require some force to remove because it is taped to the plastic frame.
- ⓘ When removing the logic board, be careful not to tear any of the ribbon cables or side buttons.

To re-assemble your device, follow these instructions in reverse order.