



ThinkPad T420 Hard Drive Replacement

If the hard drive in your ThinkPad T420 has...

Written By: Nick



INTRODUCTION

If the hard drive in your ThinkPad T420 has failed or you wish to install a larger or faster drive, this guide will show you how to replace the hard drive.

Guide notes

- **This guide does not cover operating system installation.**
 - **I may be able to help locate an image if I know what you need, but there are no gaurantees.**
- If you are installing an SSD or an thin Advanced Format (AF) drive, a 7mm->9.5mm drive spacer may be required. These are readily available online from sites like eBay if required.
 - **If you are installing a hard drive, cut the spacer based on the location of the breather hole. Heat kills spinning drives.**
- **ANY UNKNOWN HDP PASSWORDS MUST BE REMOVED BEFORE REPLACING THE DRIVE.**
 - **This will transfer to your new drive since it is stored on the ATMEL chip.**
- Make a backup of your original drive and image it, if possible. This is optional, but can be used to recover if something goes wrong.
 - ***Note: Not recommended for used systems. Reinstall from scratch, and make a clean image from a fresh install.***
- Once you are done with the old drive if you do not need it, securely erase it.
 - ***Note: SED's (and FDE) can be erased by deleting the encryption key from the drive rather than a full drive erase.***



TOOLS:

[64 Bit Driver Kit](#) (1)



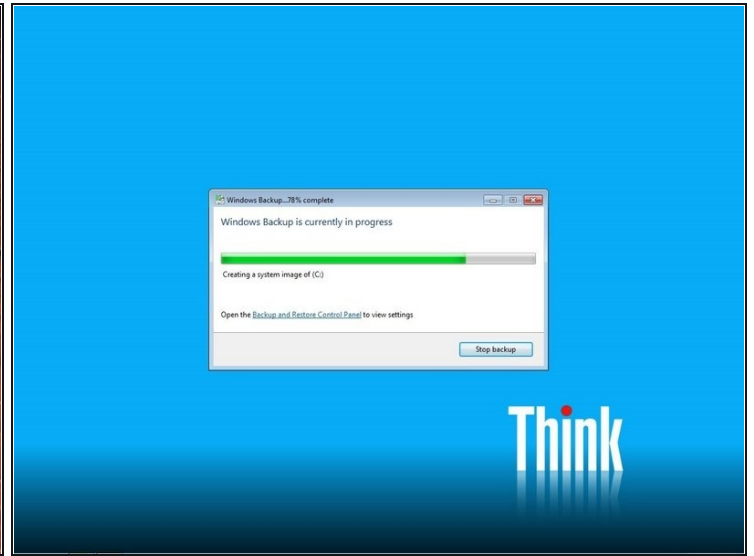
PARTS:

[Crucial MX500 1 TB SSD](#) (1)

[2 TB SSD](#) (1)

[Crucial MX500 500 GB SSD](#) (1)

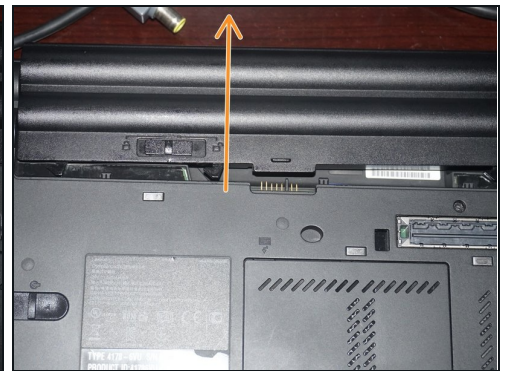
Step 1 — Backup your laptop first!



⚠ In most cases, it is better to reinstall the OS from scratch rather than image and restore. If the OS install is old, it is often overdue.

- Before replacing the drive, backup your personal files. This can be done by hand, or automated.

Step 2 — Unplug the system/remove the battery



- If the system is plugged in, disconnect it from power and remove the battery. **Slide the lock tab to the unlocked position.**
- While holding the tab in place, remove the battery.

Step 3 — Remove the hard drive door



- Remove the hard drive door from the system. Use a **Phillips #1** bit.
- Once the screw is loose, remove the drive cover as shown.

Step 4 — Remove the hard drive caddy



- Pull the black tab on the drive caddy to remove the drive.

Step 5 — Remove the drive bumpers



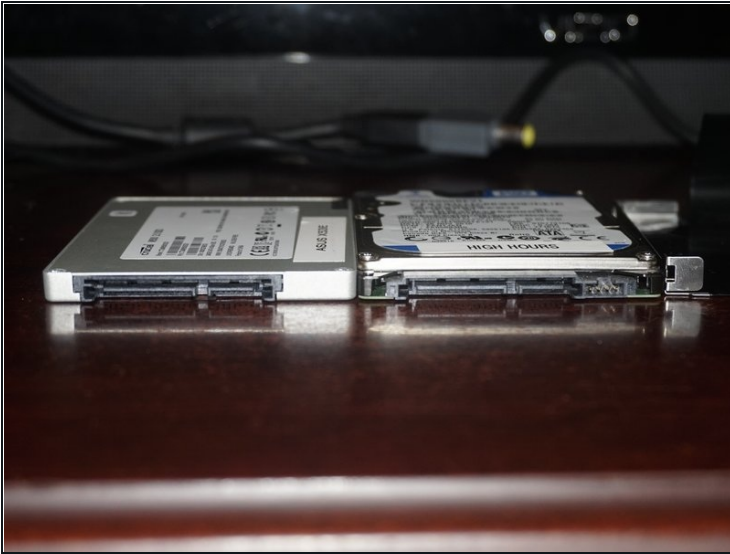
- Remove the hard drive bumpers.
- Remove the drive screws using a **Phillips #1** screwdriver.

Step 6 — Remove the old hard drive



- Remove the old hard drive from the laptop. If you intend to keep it, store it in a antistatic bag if possible.

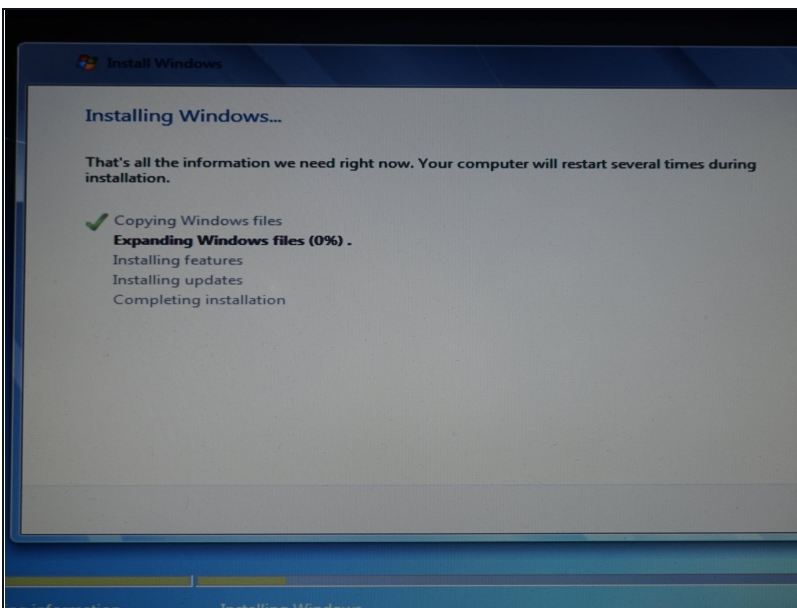
Step 7 — Install the new hard drive



⚠ If you are installing an SSD, a 7mm->9.5mm spacer may required.

- Install your new drive using steps 6 through 3. Reinstall or reimage the operating system.

Step 8 — Install the operating system



⚠ If you are installing Windows, use an official ISO or purchase OEM installation media without a product key.

i In order to save time setting up your system in the future, reinstall Windows from scratch and image the computer once all the drivers and updates are installed.

- After reassembling the system and confirming the new drive is recognized, reinstall your operating system.

Once you install the new hard drive, reassemble your computer in reverse order. Once you do this, install an OS and restore your data.