



Yamaha NS-AW190BL Front Panel and Speaker Housing Replacepemt

This guide will demonstrate the proper way to replace the front panel and speaker housing on the Yamaha NS-AW190BL if they are not functional.

Written By: Nick Ruiz





TOOLS:

- [Metal Spudger](#) (1)
- [iFixit Opening Tools](#) (1)

Step 1 — Rear Casing



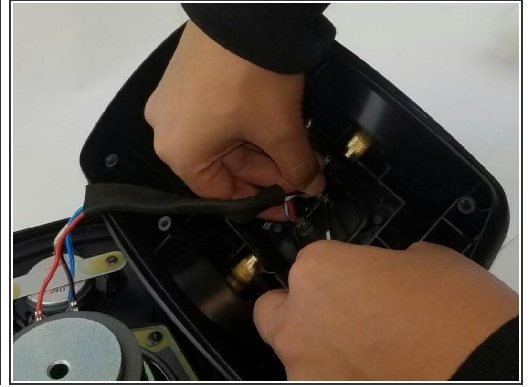
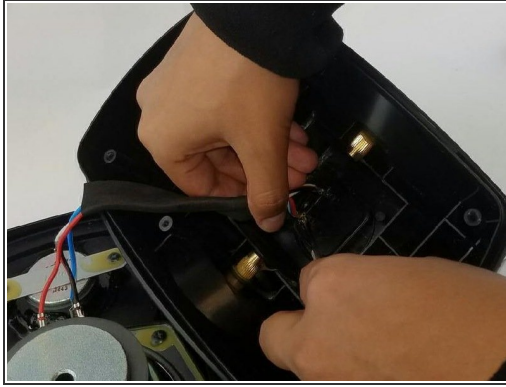
- Remove the six Phillips Head 1.2mm screws on the front side of the speaker.

Step 2



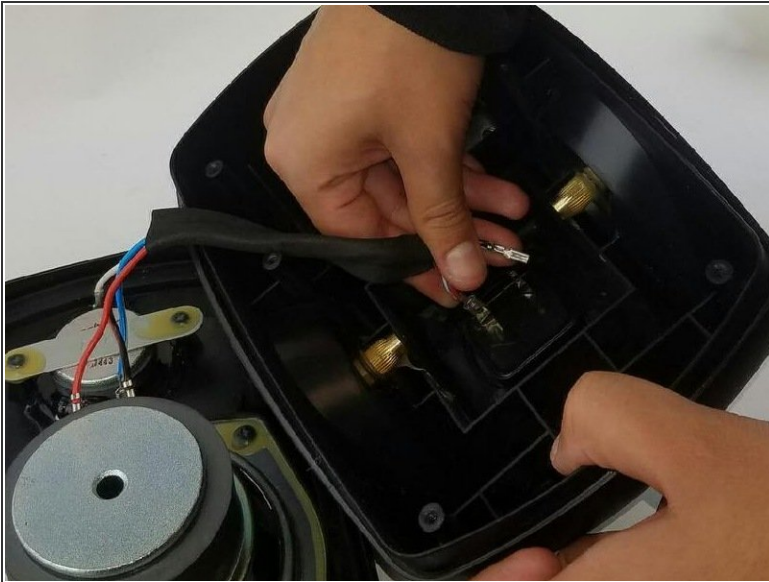
- Crack open both parts of the casing carefully.
- Using a plastic opening tool, wedge open the bottom of the speaker to separate the two parts of the speaker.

Step 3



- Remove the cooling foam.
- Use a metal spudger to push the tab in on the red wire.
- Repeat the process for the blue wire.

Step 4



- The blue wire can now be removed from its connector.
- Remove the red wire to free the rear casing.

Step 5 — Wiring



- Use the metal spudger to bend down the metal tabs that hold the wires to the terminals. The tabs are small and in between the grooves of the terminal.

Step 6



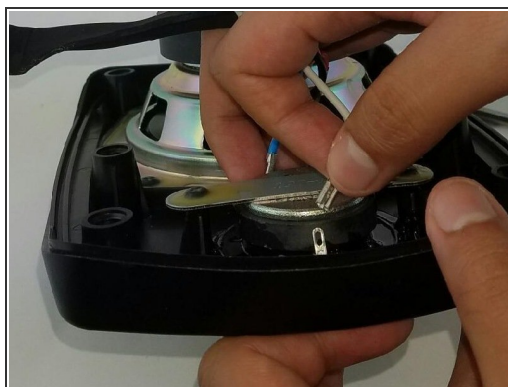
- Remove the wires from the terminals.

Step 7



- Use the metal spudger to bend the metal tabs that hold the connectors to the terminals.

Step 8



- Remove the wires from the terminals. Then remove the entire wire assembly.

Step 9 — Front Panel and Speaker Housing



- Once the wire assembly is removed, the entire front panel and speaker housing should be separated to replace.

To reassemble your device, follow these instructions in reverse order.