



Yamaha NS-AW190BL Damaged Wires Replacement

Use this guide to repair or replace damaged wires on the Yamaha NS-AW190BL.

Written By: Roshal Robince



INTRODUCTION

This guide explains the method to repair or replace damaged wires on the Yamaha NS-AW190BL.



TOOLS:

- [Metal Spudger](#) (1)
 - [iFixit Opening Tools](#) (1)
-

Step 1 — Rear Casing



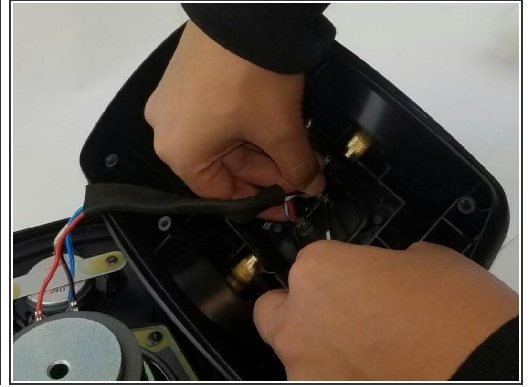
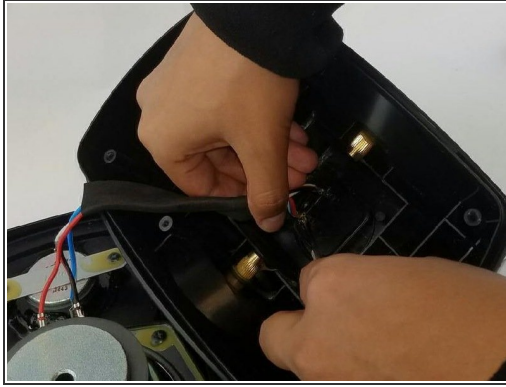
- Remove the six Phillips Head 1.2mm screws on the front side of the speaker.

Step 2



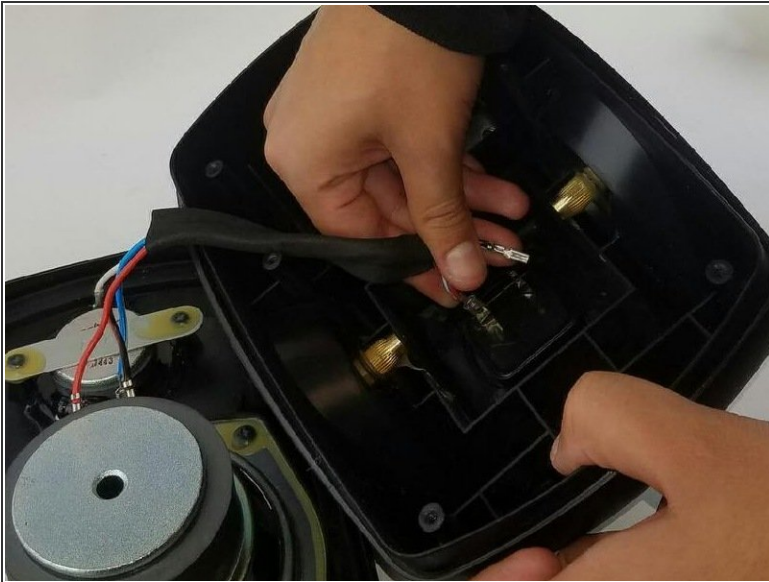
- Crack open both parts of the casing carefully.
- Using a plastic opening tool, wedge open the bottom of the speaker to separate the two parts of the speaker.

Step 3



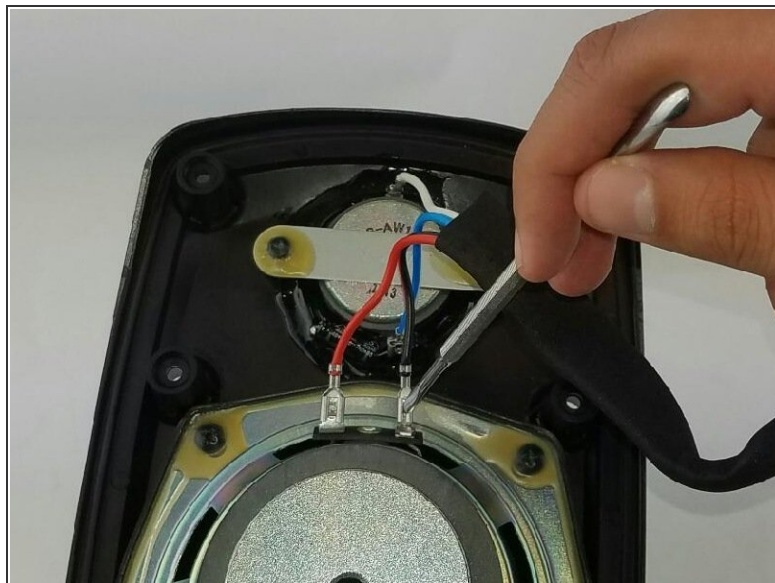
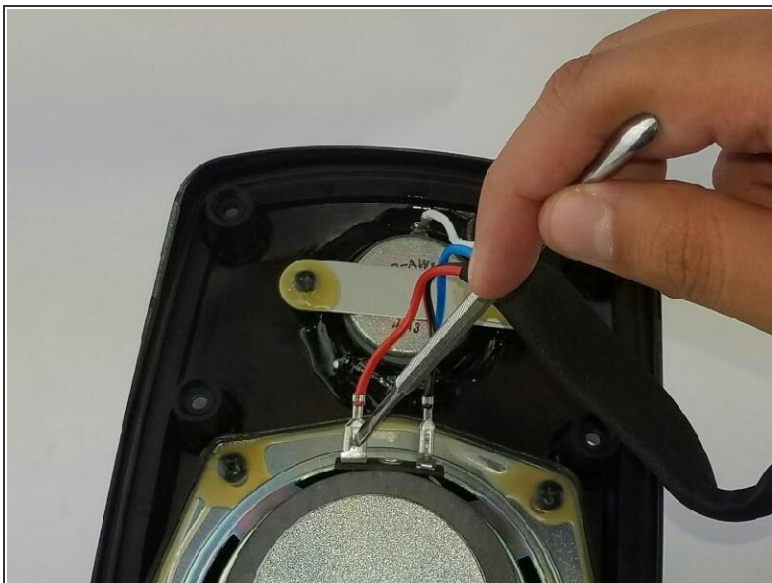
- Remove the cooling foam.
- Use a metal spudger to push the tab in on the red wire.
- Repeat the process for the blue wire.

Step 4



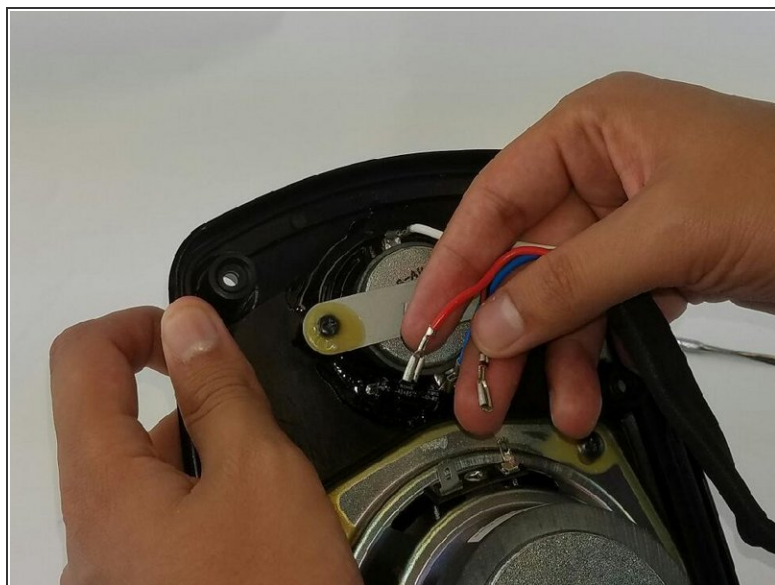
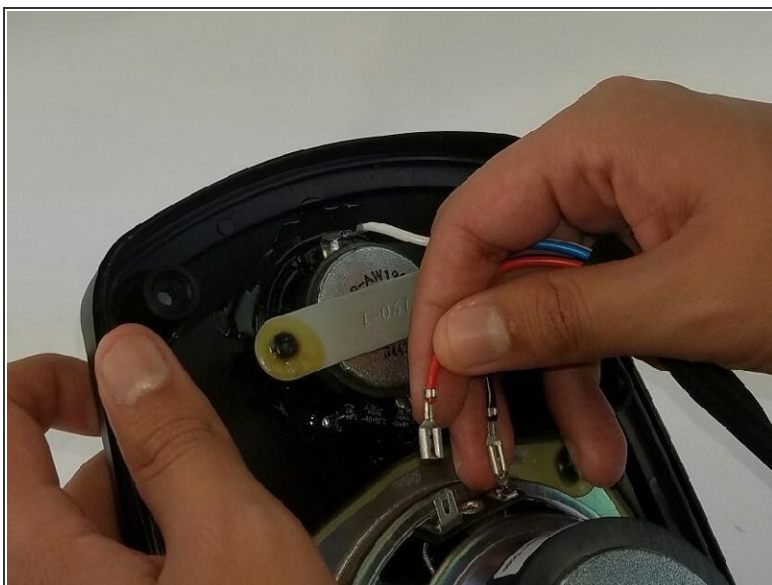
- The blue wire can now be removed from its connector.
- Remove the red wire to free the rear casing.

Step 5 — Wiring



- Use the metal spudger to bend down the metal tabs that hold the wires to the terminals. The tabs are small and in between the grooves of the terminal.

Step 6



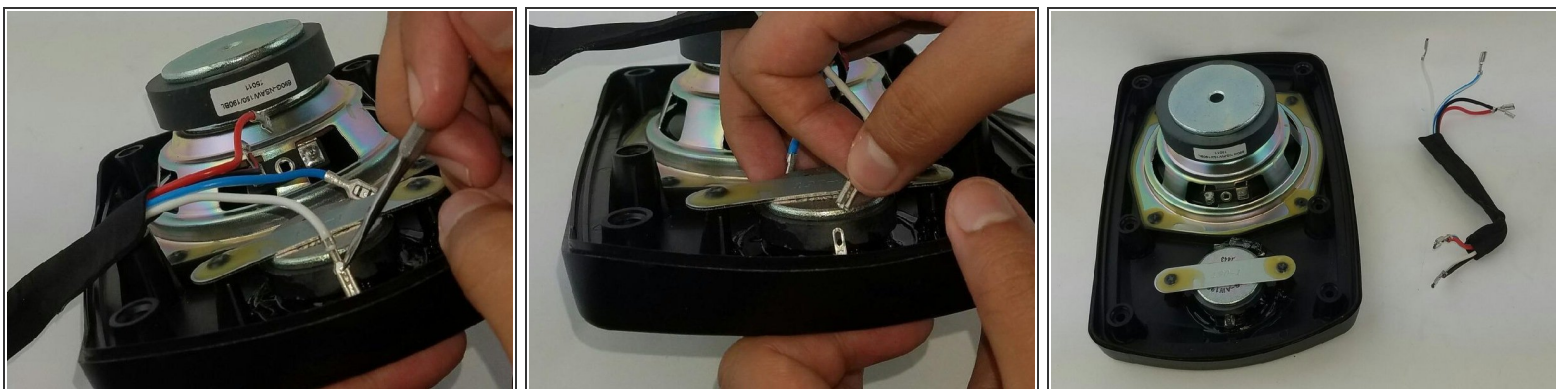
- Remove the wires from the terminals.

Step 7



- Use the metal spudger to bend the metal tabs that hold the connectors to the terminals.

Step 8



- Remove the wires from the terminals. Then remove the entire wire assembly.

To reassemble your device, follow these instructions in reverse order.