



LG Muziq LX570 Display Panel Replacement

This guide will assist you in removing and...

Written By: Braden Burk



INTRODUCTION

This guide will assist you in removing and replacing the display panel on your LG Muziq.



TOOLS:

- [Phillips #00 Screwdriver](#) (1)
 - [iFixit Opening Tool](#) (1)
-

Step 1 — Front Case



- Use a spudger to remove the two screw covers below display.
- Use a screw driver to remove the four Phillips #00 (3.3mm) screws at corners of the display.

Step 2



⚠ Caution: Wires and ribbon connect the front case to the main body. Exhibit care when separating front case from the main body as to not break the connections.

- **Note:** Side buttons may fall out when removing the front case. Do not misplace them.
- **Note:** Each side button will only fit in the side that it came from.
- Insert a spudger between the black and grey casings and gently spread them apart.
- Work around the device gradually, opening the gap further.

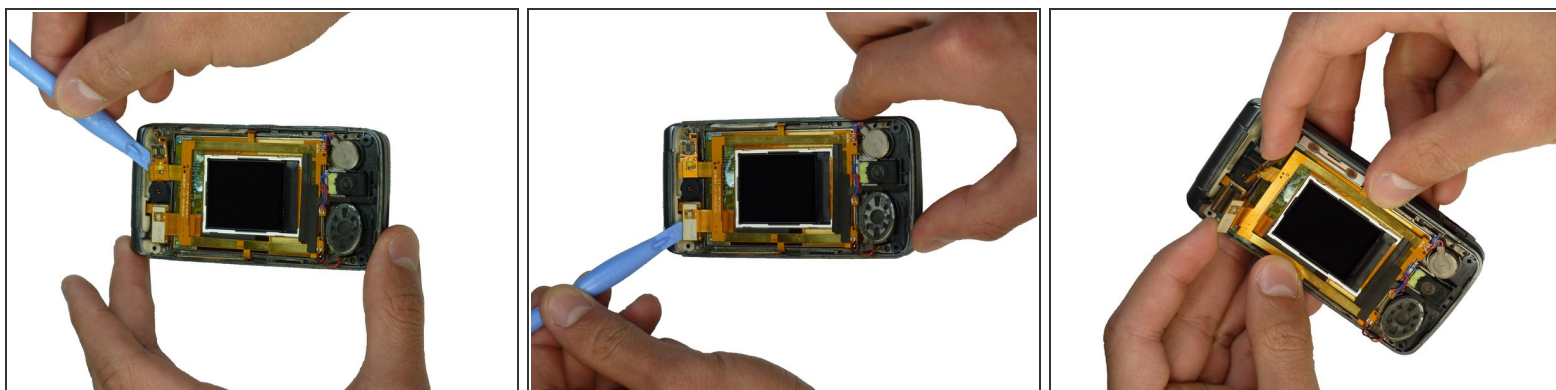
Step 3



⚠ Caution: The wires and ribbon connector can break easily. Exhibit care when removing them.

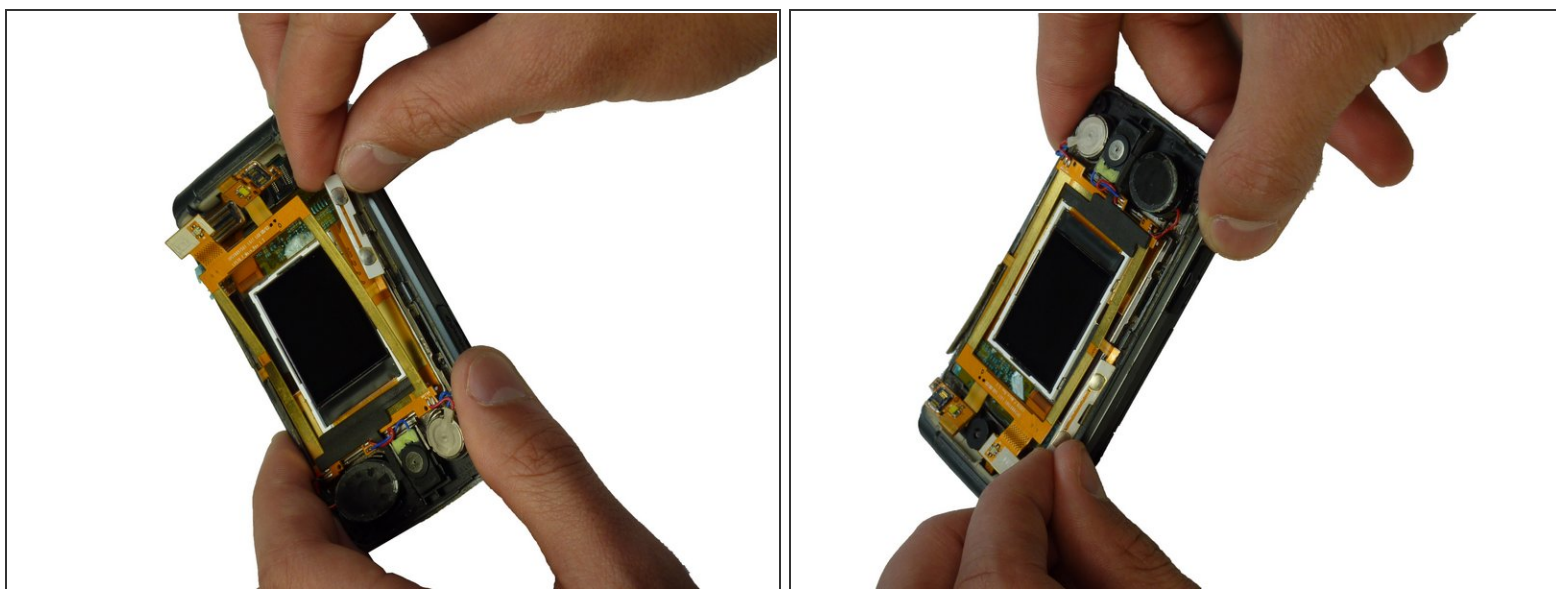
- Use the spudger and lift upward to disconnect the ribbon from the main part of the phone.
- Carefully remove any parts stuck to the front case such as speakers.

Step 4 — Display Panel



- Use the spudger to unclip the two upper wiring connections.

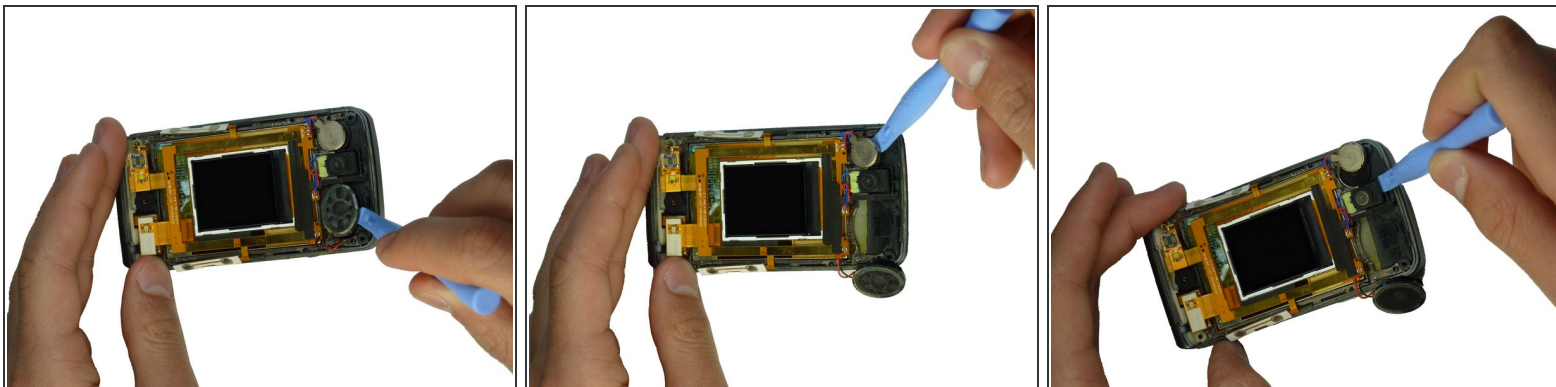
Step 5



⚠ Caution: The side buttons are attached to the ribbon around the display screen. Do not separate the side buttons from the ribbon when removing.

- Gently lift the side buttons from the phone casing.

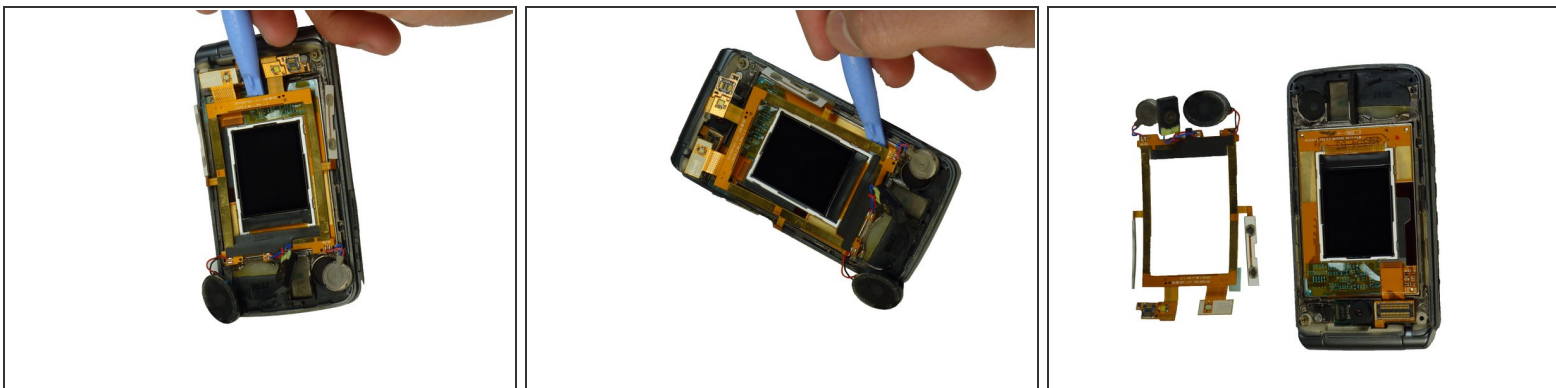
Step 6



⚠ Caution: The wiring on the ribbon connector is delicate. Do not excessively pull on the wires.

- Use the spudger to remove the three components connected to the ribbon.

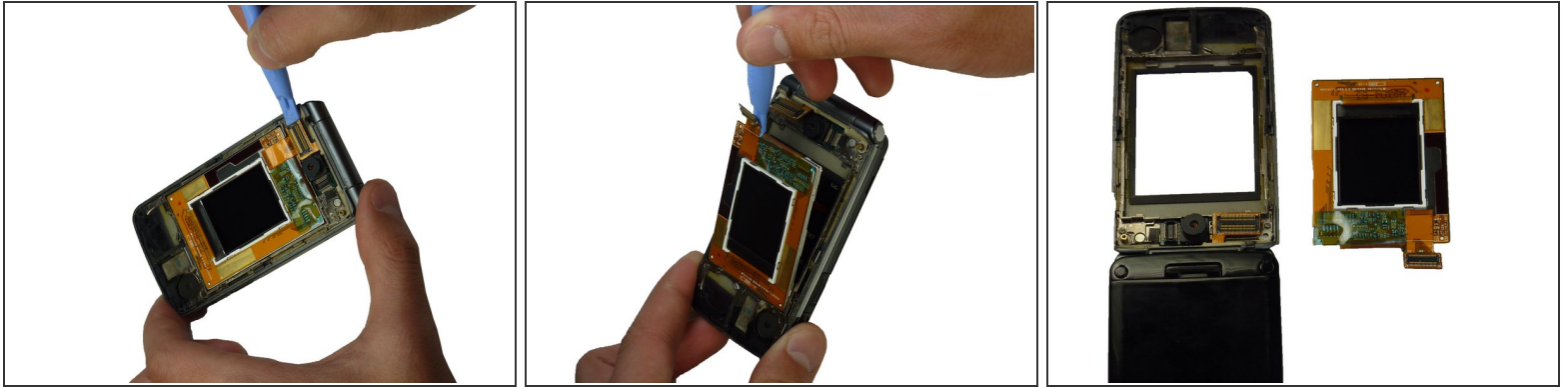
Step 7



⚠ Caution: The ribbon contains important wiring and is glued to the phone. Be careful when removing the ribbon.

- Use the spudger to gently remove the ribbon from the phone.

Step 8



- Use the spudger to lift the upper tab in the top left corner of the display.
- Continue lifting until the display panels lift out of their setting and can be removed.

To reassemble your device, follow these instructions in reverse order.