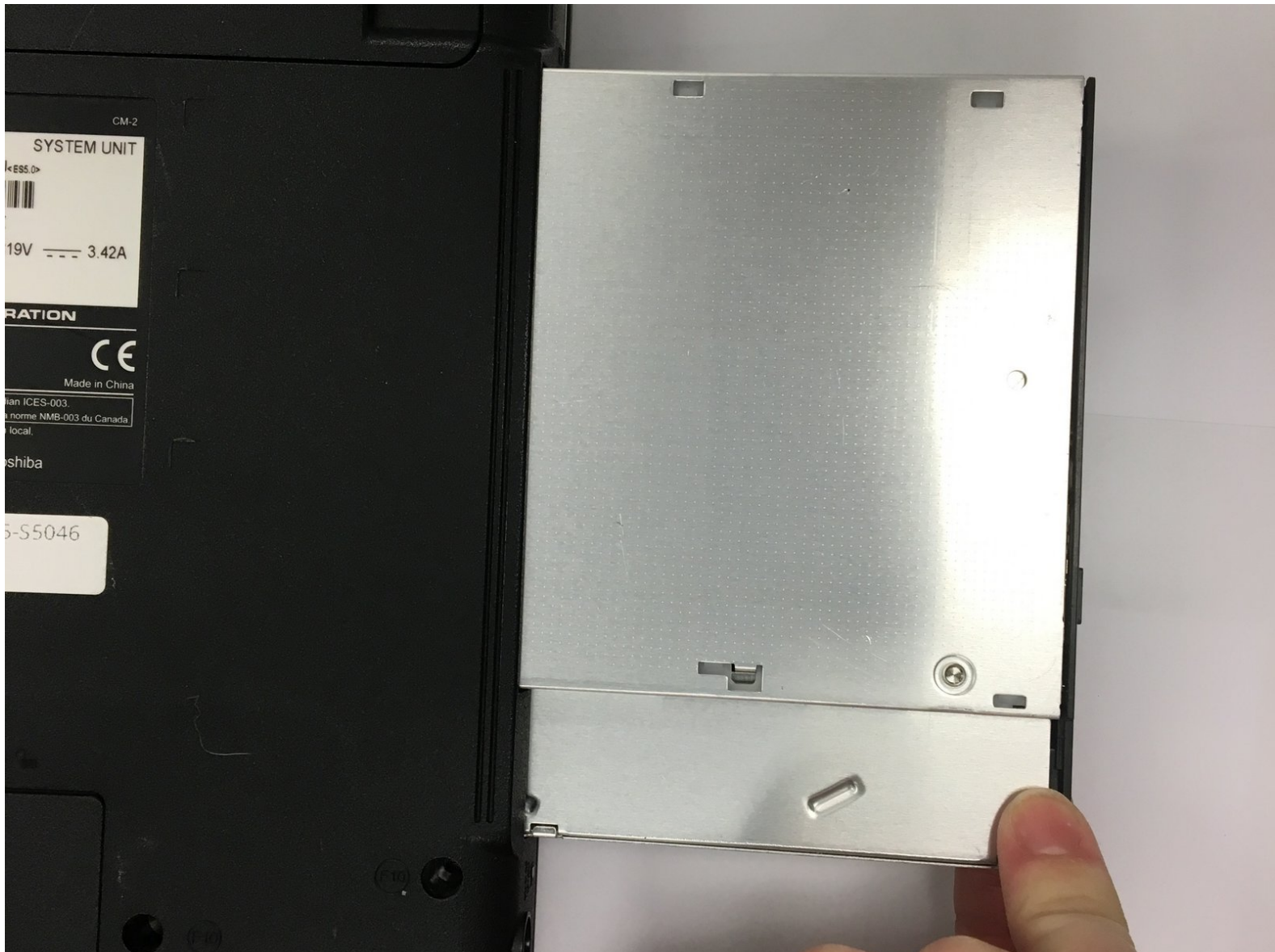




# Toshiba Satellite L455-S5046 Optical Drive Replacement

How to take out and then replace the Optical Case located on the side of the Toshiba Satellite L455-S5046. This is the place where DVDs are played.

Written By: Daryl Spurgeon



---

## INTRODUCTION

In this guide we will instruct you on how to change the optical drive of your laptop. This will be helpful if yours is broken.

---



### TOOLS:

- [Phillips #0 Screwdriver](#) (1)
-

## Step 1 — Optical Drive



- Unscrew 1 Phillips #0 7-mm screw on the back of the computer.

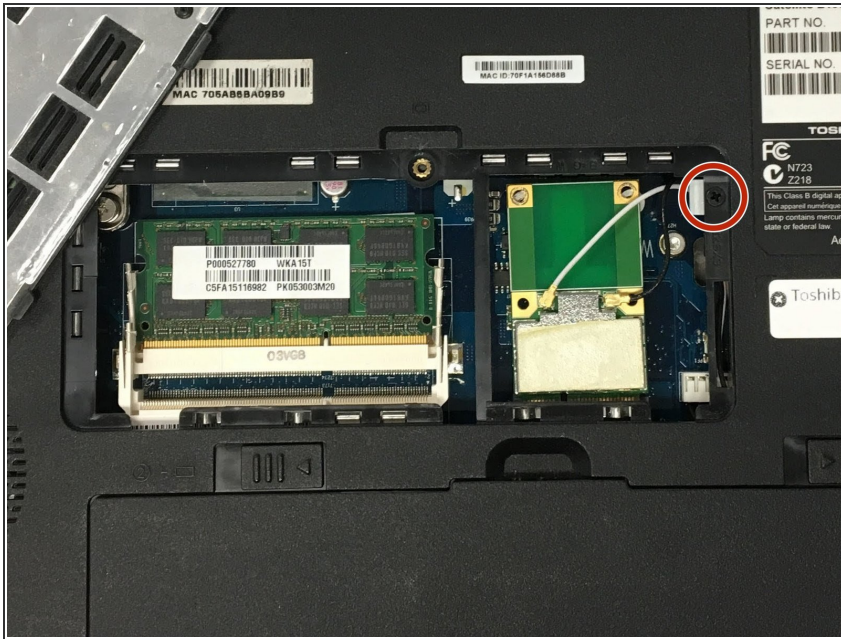
## Step 2



- Lift the plate and gently pull it away from yourself, until it is removed.



### Step 3



- Unscrew the 1 Phillips #0 7-mm screw, located on the right side where the silver tabs of the optical drive poke out.

### Step 4



- The optical drive is partially visible and push it to the right.
- The optical drive should pop out on the right side, and you can gently pull it out.

To reassemble your device, follow these instructions in reverse order.