



# Samsung Galaxy Tab 3 10.1 Rear-Facing Camera Replacement

Written By: Corey Brown



---

## TOOLS:

Phillips #000 Screwdriver (1)  
iFixit Opening Picks (Set of 6) (1)  
Spudger (1)  
Tweezers (1)  
Nylon Tipped Tweezers (1)

## PARTS:

Galaxy Tab 3 10.1 Rear Camera (1)

---

### Step 1 — Rear Case



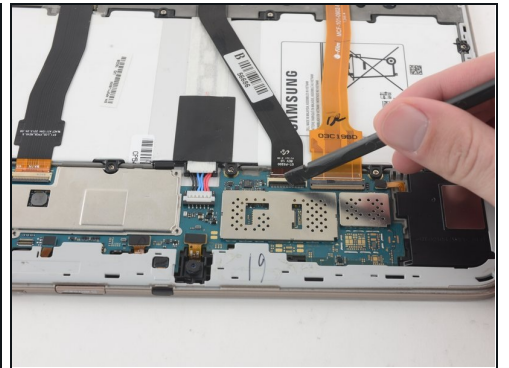
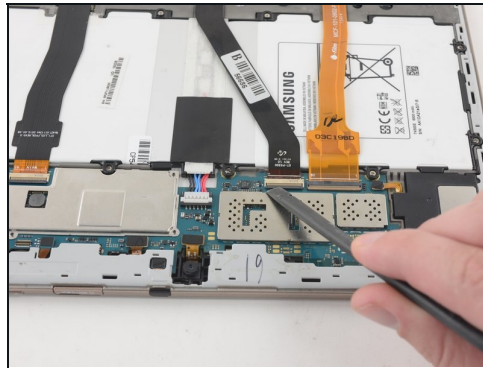
- Insert an opening pick between the rear case and the plastic rim.
- ① You may need to add multiple picks to detach the clips.
- Slide the pick along the edge of the rear case until you release the plastic clips attaching the rear case to the display.
- Continue to slide the pick around the edge of the rear case until all clips are released.

## Step 2



- Lift the case up to remove it.

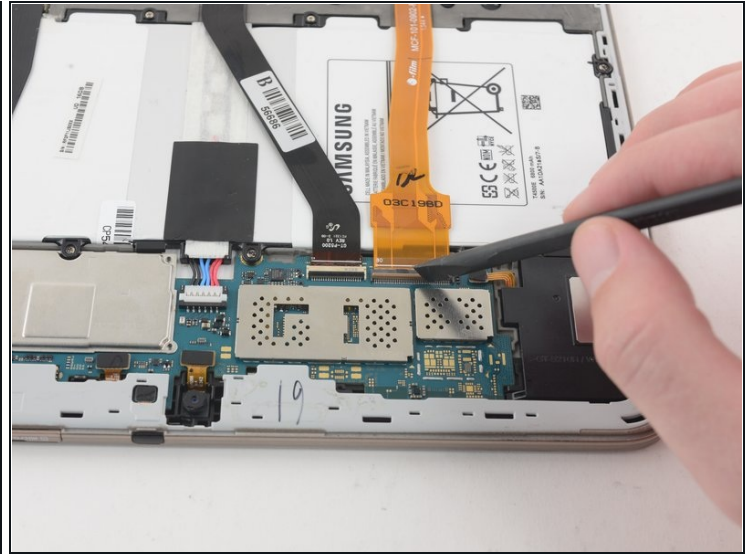
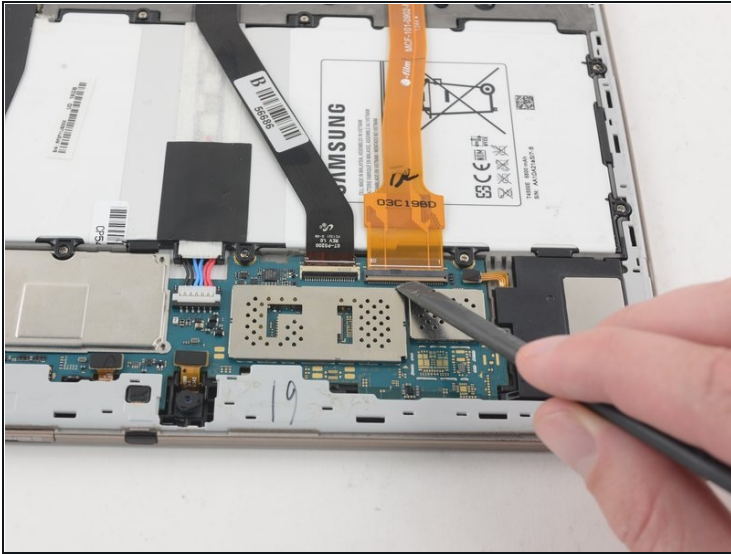
## Step 3 — Battery



- Use the flat end of a nylon spudger to pry up the **black** plastic tabs securing the two ZIF connectors.

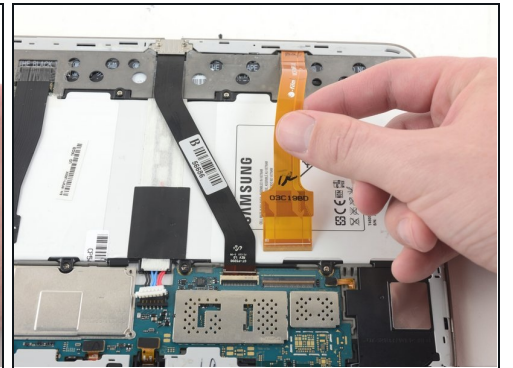
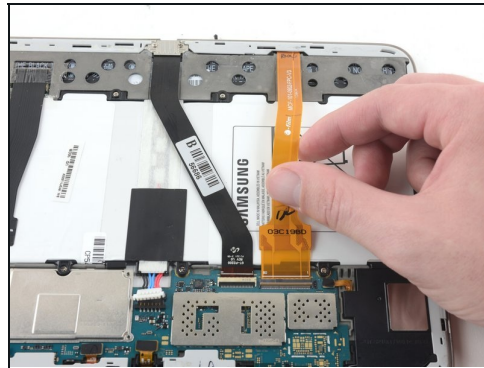


## Step 4



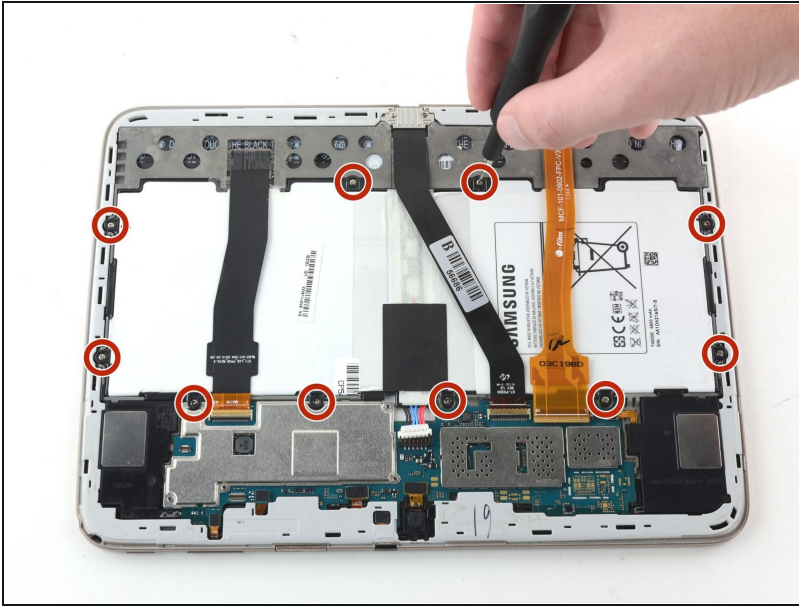
- Use the flat end of a nylon spudger to pry up the **brown** plastic tab securing the orange ribbon cable.

## Step 5



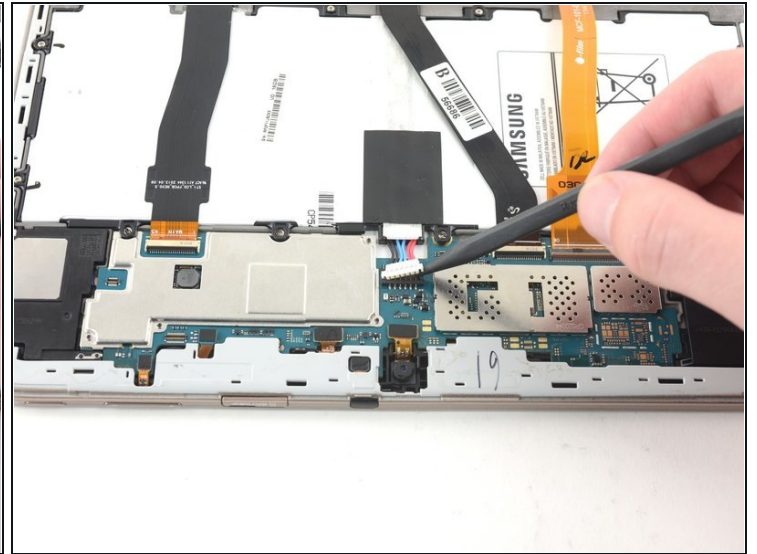
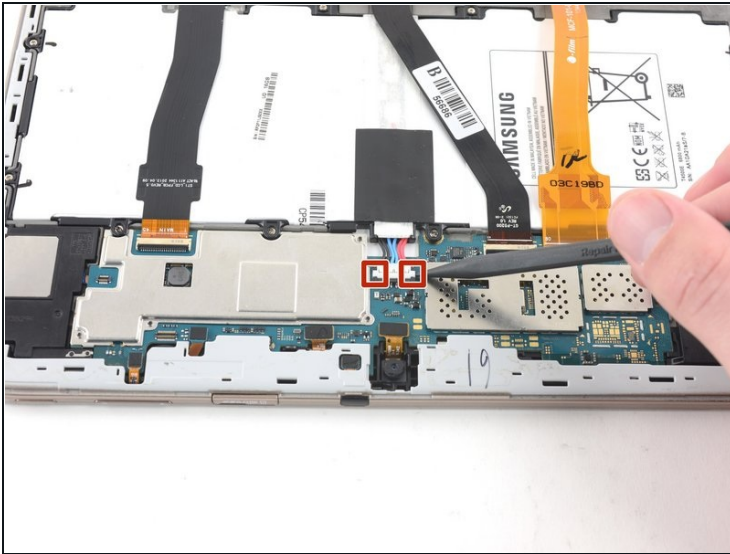
- Remove all three ribbon cables by gently pulling the cables away from the ZIF connectors.

## Step 6



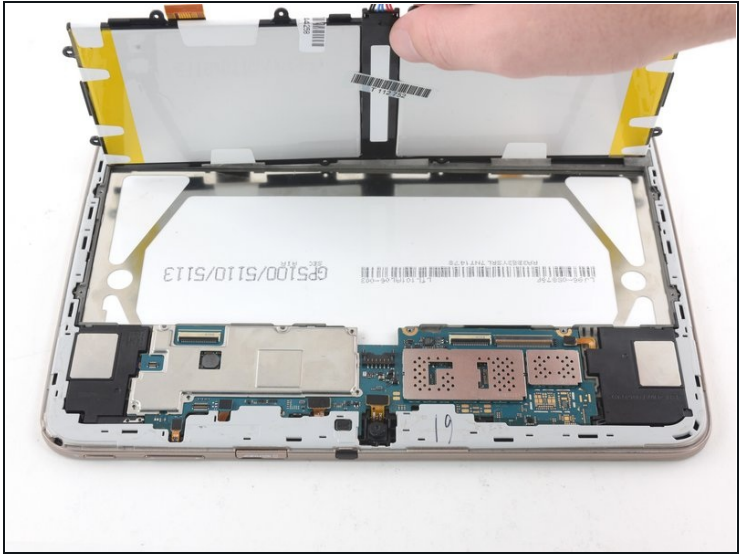
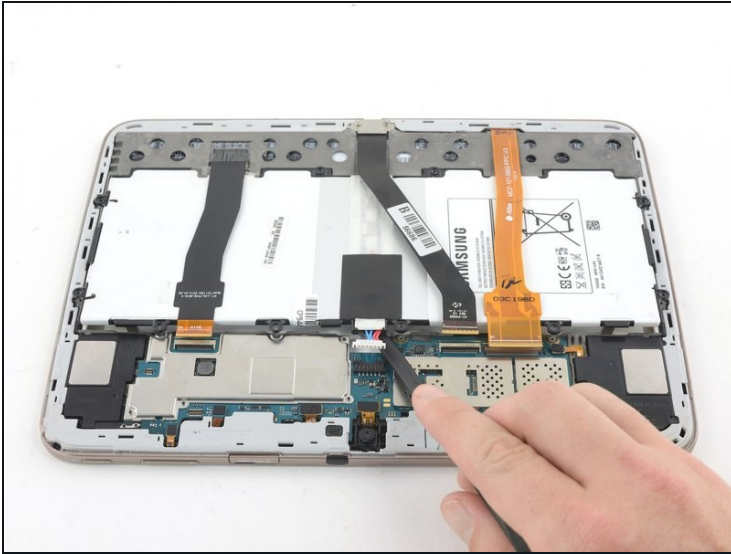
- Use a Phillips #000 screwdriver to remove the ten 3mm screws securing the battery to the chassis.

## Step 7



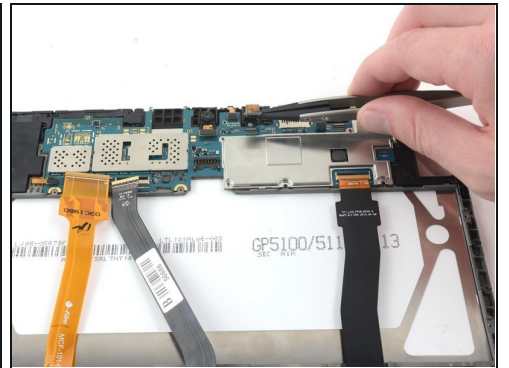
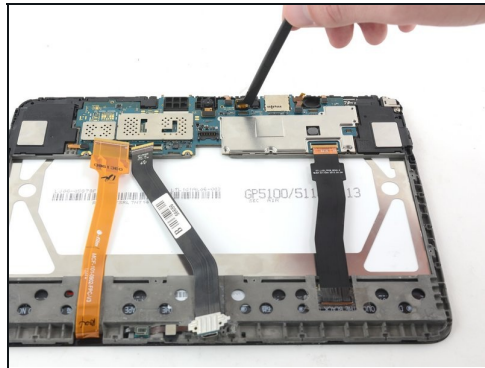
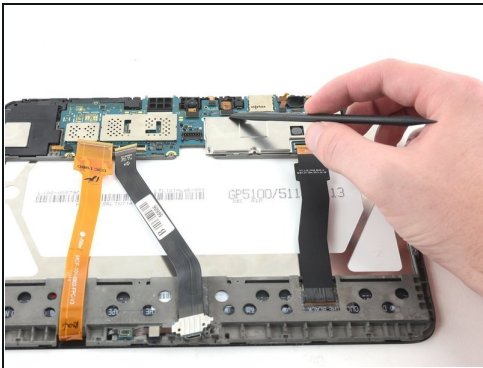
- Use the pointed end of a nylon spudger to pry the two battery connections away from the motherboard.

## Step 8



- Lift with a nylon spudger to remove the battery.

## Step 9 — Rear-Facing Camera



- Use the flat end of a plastic spudger to pry up the press-fit connector from the motherboard.
- Remove the camera by gently pulling upward with a pair of tweezers.

---

To reassemble your device, follow these instructions in reverse order.