



Princess Croque Monsieur Thermal Fuse Replacement

In the following guide we will show you how to repair your Princess Croque Monsieur. Our toaster did not heat up after inserting the plug in a socket. So we took it apart and came to the conclusion that the thermal fuse was defect.

Written By: Merijn van Niekerk



INTRODUCTION

Thermal fuses are the most common part in a toaster that stop working. When a toaster machine stops working, people usually throw it away and buy a new one. however, the problem is really simple to fix, and is way cheaper than buying a new Croque Monsieur-/panini press. We are going to show you how.



TOOLS:

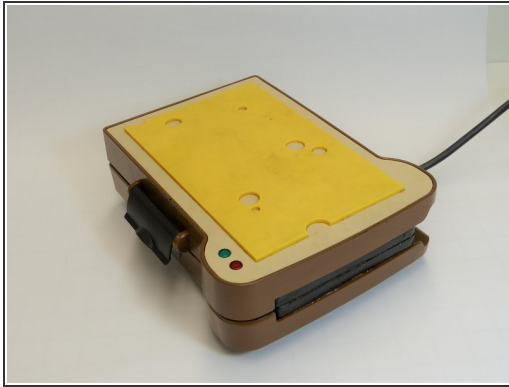
- [Solder](#) (1)
- [Flush Wire Cutters](#) (1)
- [Large Needle Nose Pliers](#) (1)
- [Phillips #1 Screwdriver](#) (1)
- [Soldering Iron](#) (1)



PARTS:

- [ESKA SW-128TL](#) (1)
<https://www.conrad.nl/nl/eska-sw-128tl-temperatuurzekering-240-c-10-a-250-v-1-stuks-419026.html>

Step 1 — Thermal Fuse



- Pull the plug of the panini press the out of the socket.
- Unclip the black 'closing part' and open the toaster.

Step 2



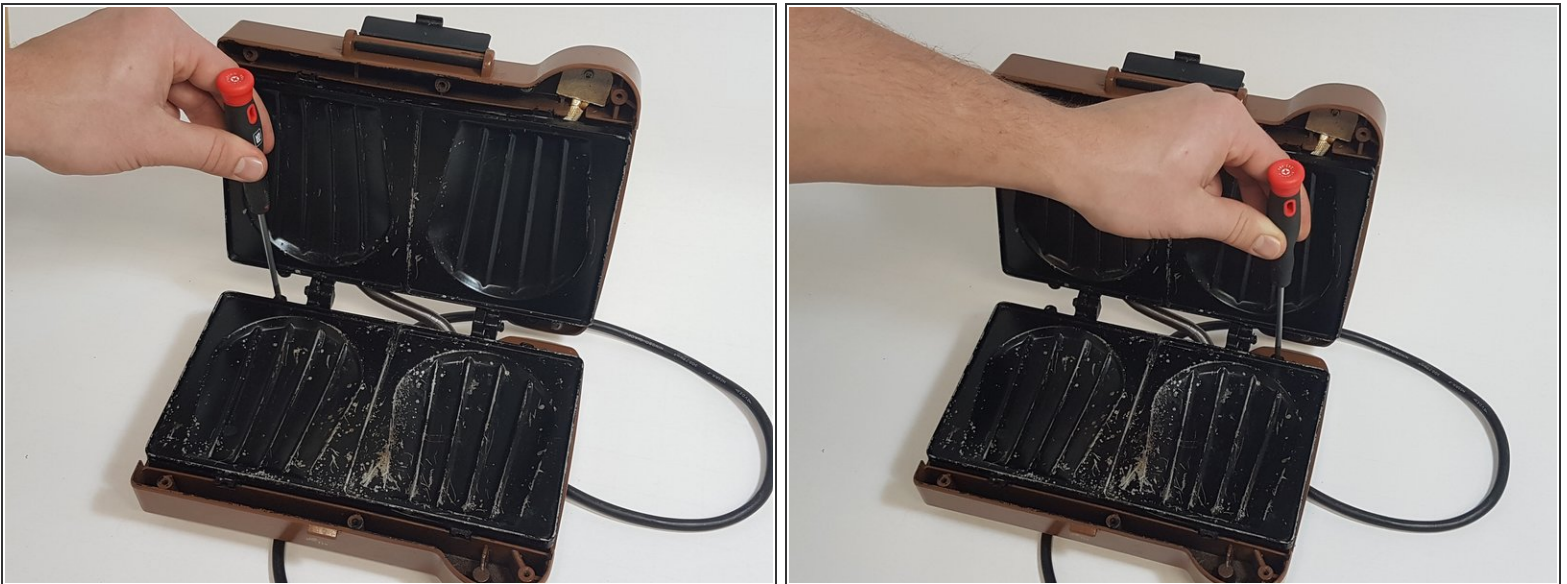
- Remove the screws of the front plate, by using a Philips #1 Screwdriver

Step 3



- Remove the front plate as shown on the picture.
- Remove the screws of the top plate, the same way you did at the bottom (see step 2).
- Remove the top plate as shown in the picture.

Step 4



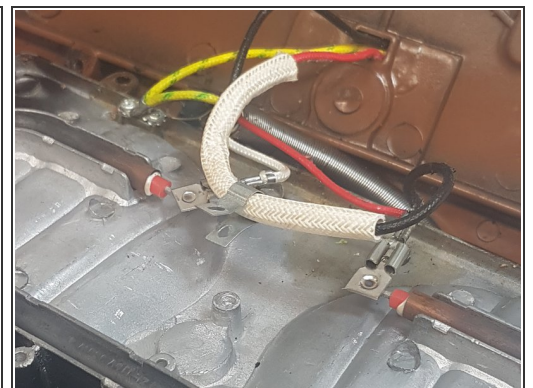
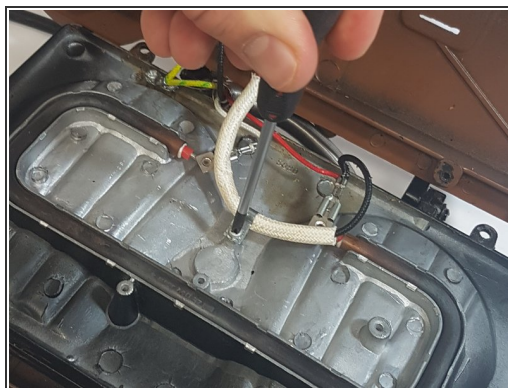
- Remove the two screws at the back of the heating plate as shown in the pictures.

Step 5



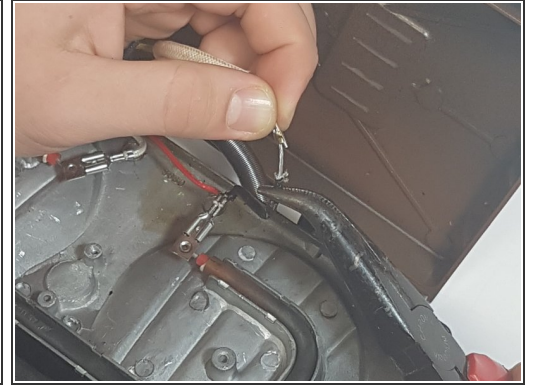
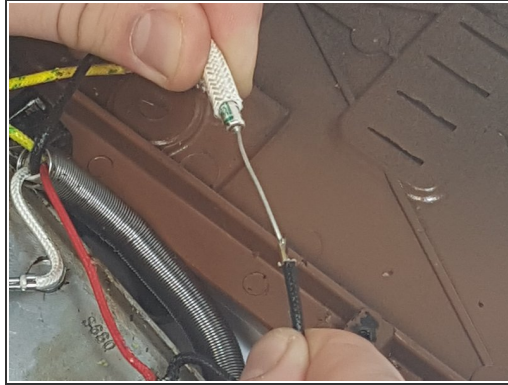
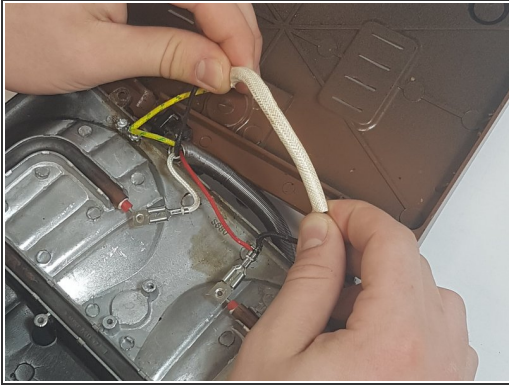
- Turn the panini press around to be able to reach the screws of the other heating panel. and remove these screws the same way you did at the bottom side (step 4).
- Place the panini press such that you can easily look under the heating elements (as seen in the second picture).

Step 6



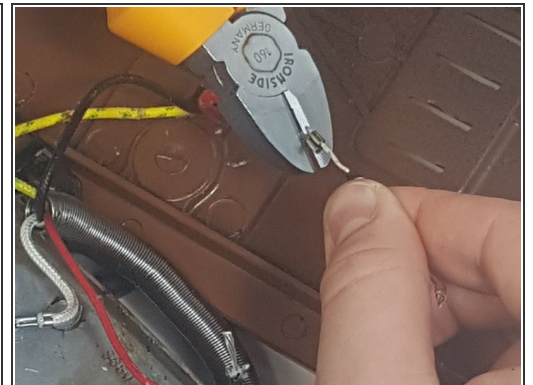
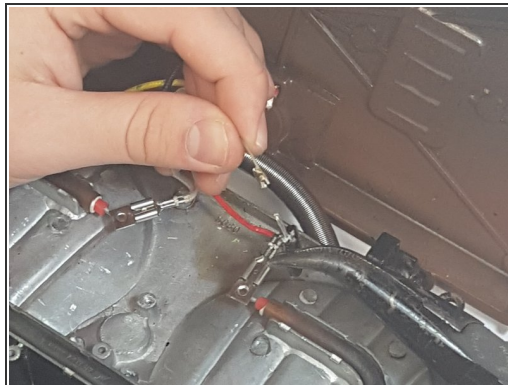
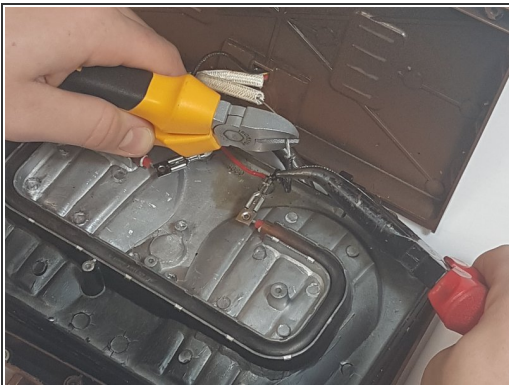
- The thermal fuse is placed at the top part of the panini press.
- The fuser is covered by a white 'rope-like sleeve'.
- you can reach the fuser by removing the screw in the middle, using the screwdriver.

Step 7



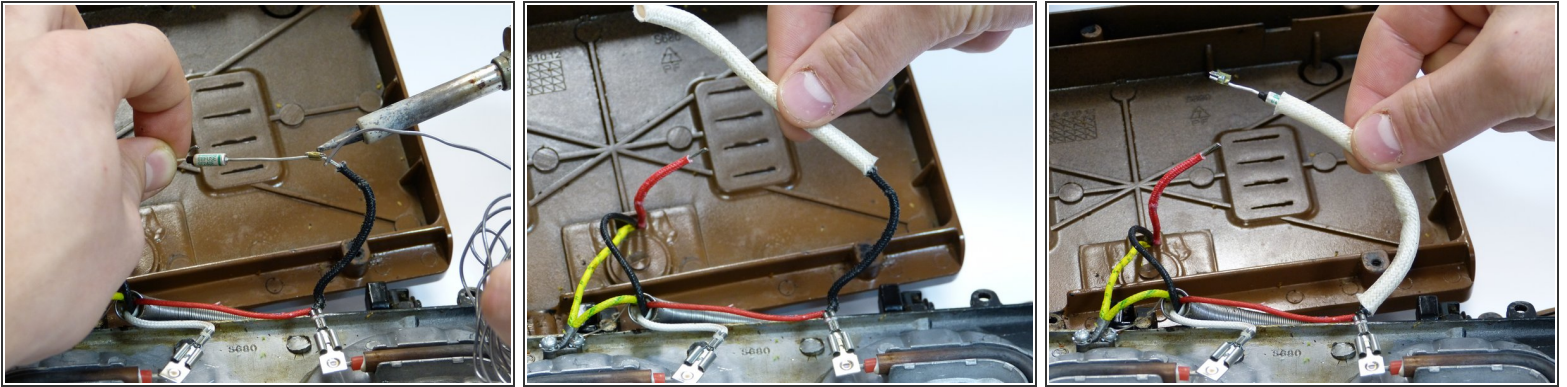
- Move the rope-like sleeve to the left side to reach the thermal fuse.
- Remove the black 'rope' so you can cut the wire, using the wire cutter.

Step 8



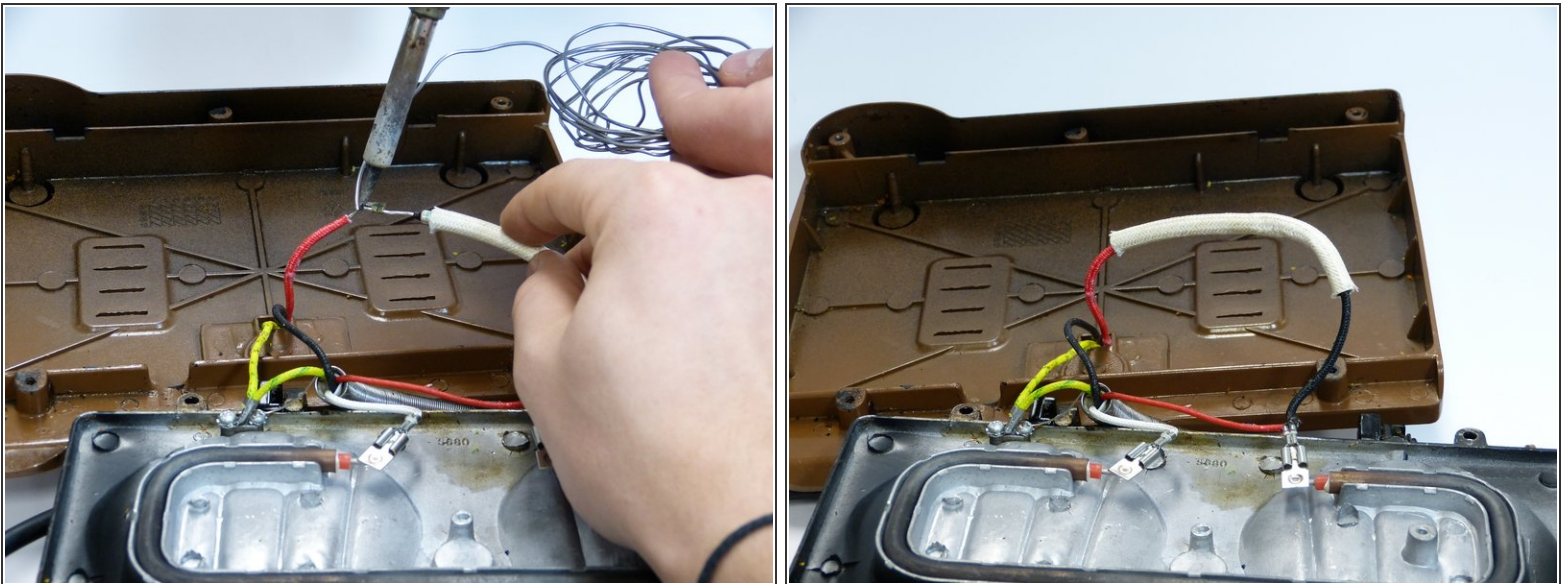
- Cut the wire as shown in the picture.
- Remove the white sleeve and cut the other side of the fuse.

Step 9



- Solder the new thermal fuser on the cable, using the soldering machine.
- Slide the 'rope-like sleeve' on the cable until the fuser sticks through the other side.

Step 10



- Solder the other part on to the red cable as shown in the picture.
- Slide the sleeve over the fuse as it was before you had cut the fuse (if you don't remember how it needs to be, just go back to the picture in step 6).

Step 11



- Reassemble the panini press by following the steps in reverse.

To reassemble your device, follow these instructions in reverse order.