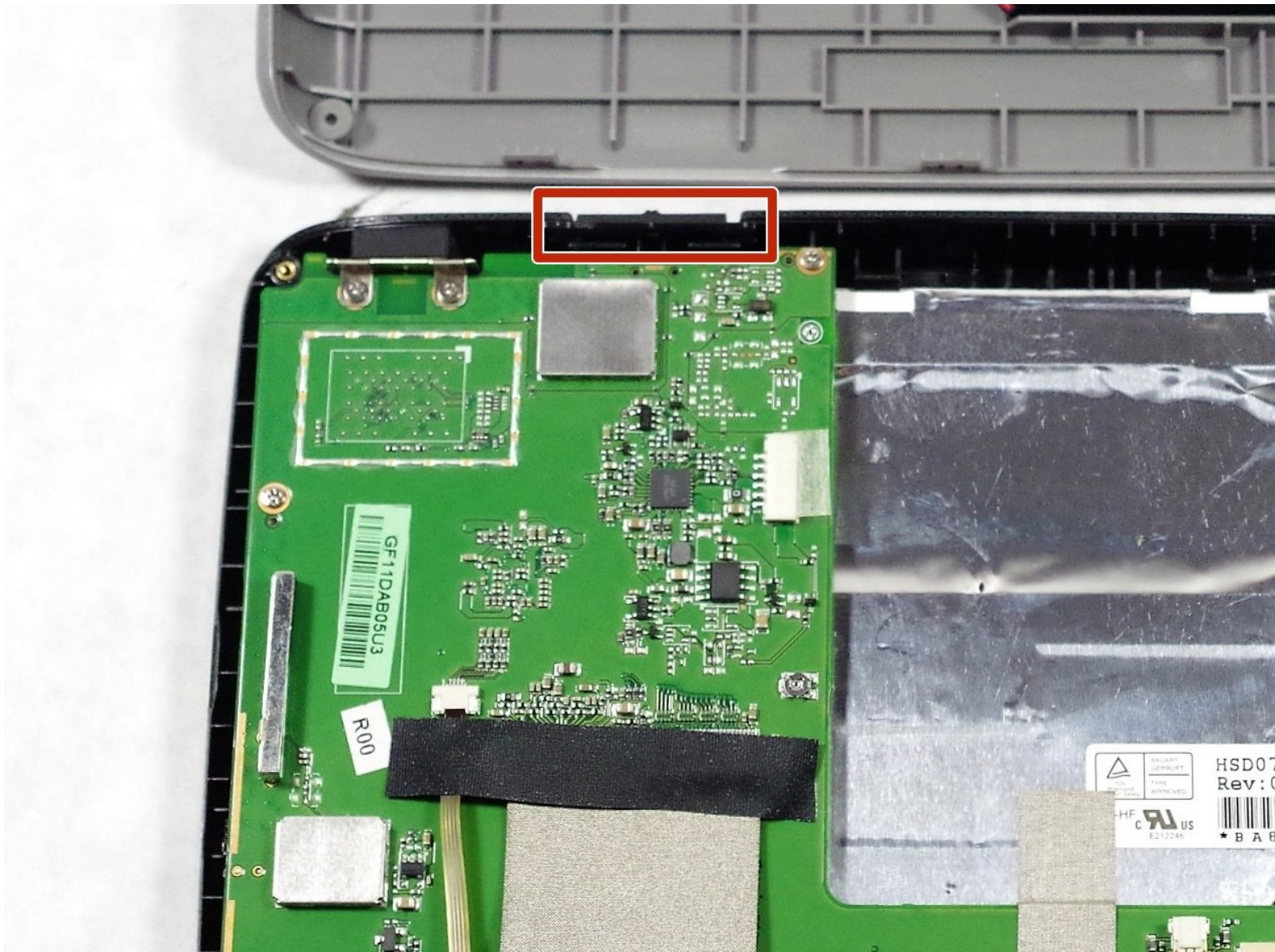




# Magellan Roadmate 9055-LM Button Replacement

How to replace the button

Written By: Giovanni



 **TOOLS:**

- [iFixit Opening Tools](#) (1)
- [Phillips #0 Screwdriver](#) (1)

## Step 1 — Magellan Roadmate 9055-LM Back Panel Disassembly



⚠ Flip your device with back panel facing up.

## Step 2



- Unscrew four Phillips #0 screws from the back panel.

### Step 3



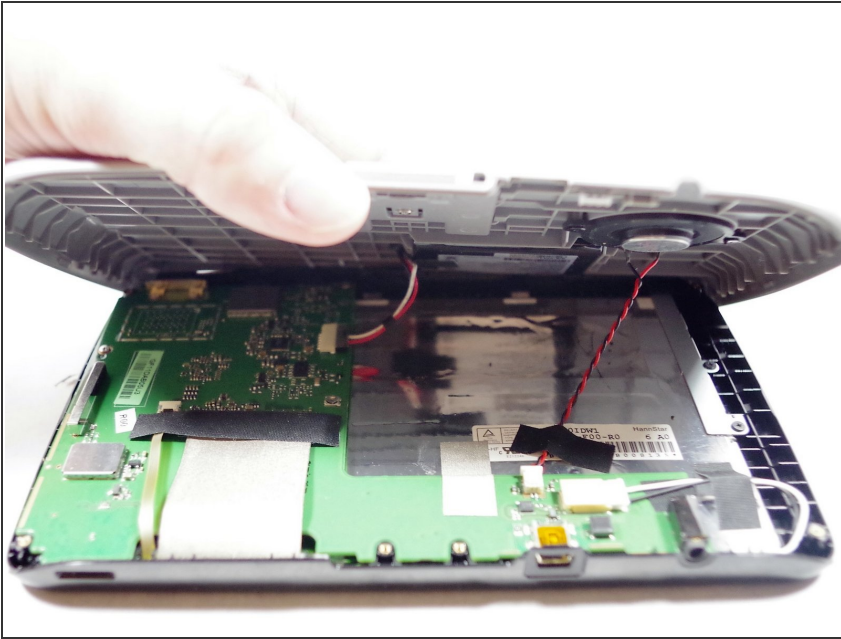
- Unscrew two Phillips #0 screws from the back panel.

### Step 4



- Use a plastic opening tool to pop the right side of the panel.

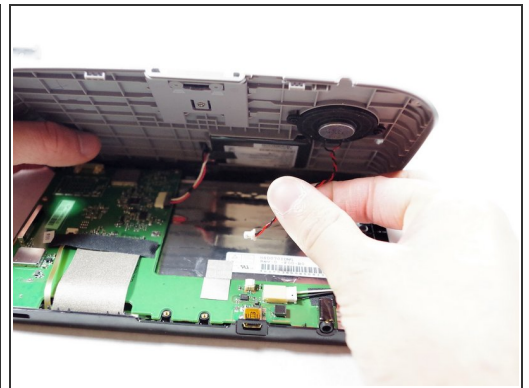
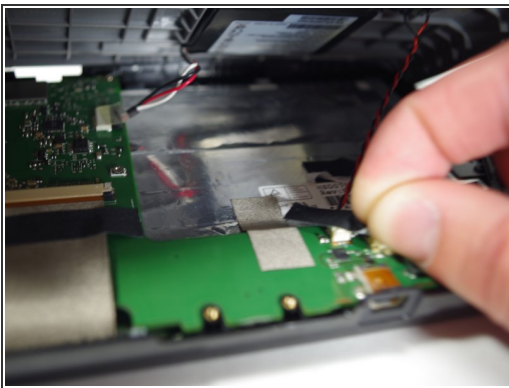
## Step 5



⚠️ Lifting the back panel too quickly or forcefully may damage the speaker cable and battery cable, which are still attached underneath.

- Gently lift up the back panel.

## Step 6




- Remove the tape.
- Unplug the cable for the speaker.

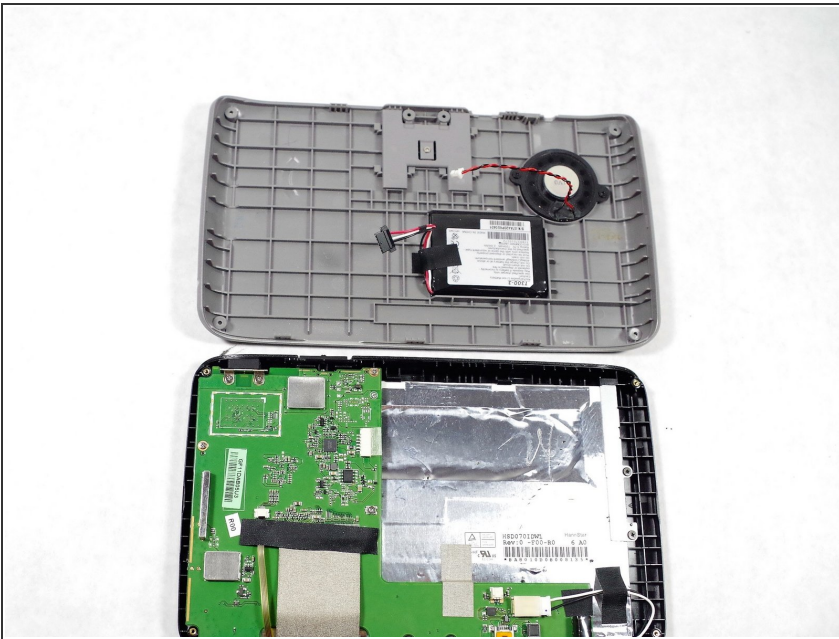
## Step 7



- Remove the cable of the battery.

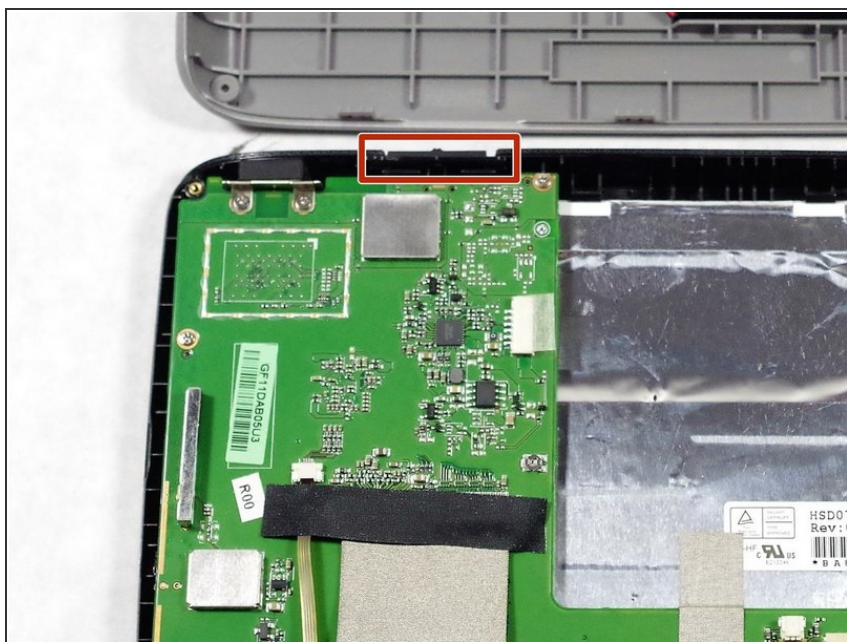
 Tape removal is not necessary.

## Step 8



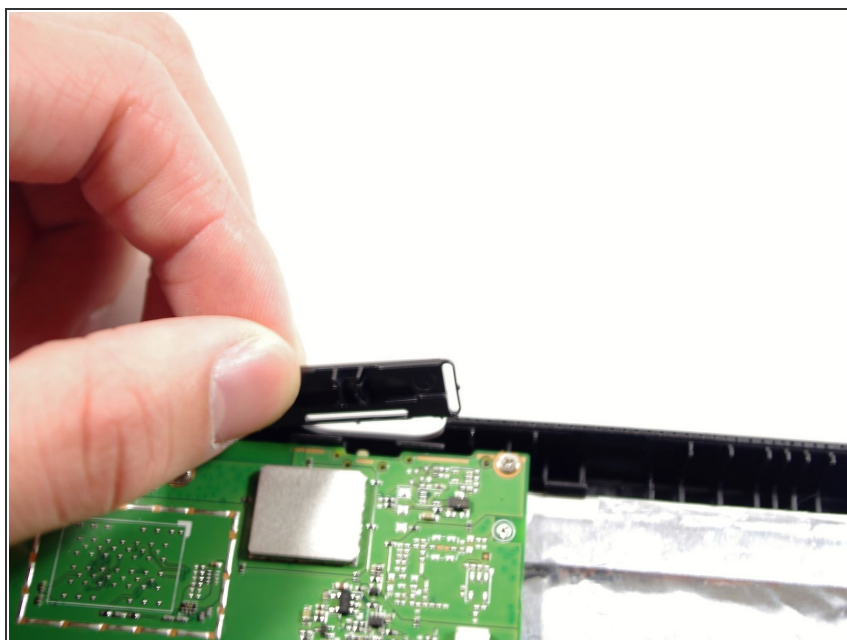
- Place the back panel gently on the table.

## Step 9 — Button



- Locate button

## Step 10



- The button can be easily removed and can now be replaced

To reassemble your device, follow these instructions in reverse order.