



# Dell Inspiron E1505 RAM Replacement

Whether due to it failing or the desire to upgrade replacing RAM is an easy task for owners of the Dell Inspiron E1505. This step by step guide can be used for removal, replacement as well as upgrading.

Written By: Anthony Toscano





## TOOLS:

- [Phillips #0 Screwdriver](#) (1)
  - [iFixit Opening Tools](#) (1)
-

## Step 1 — Battery



- Before any work can be done ensure that the laptop is powered off.
- Use either the power button on the computer or issue a shutdown from the operating system.
- Once the device is off place the laptop on a flat surface and flip it so that the bottom is facing upwards.

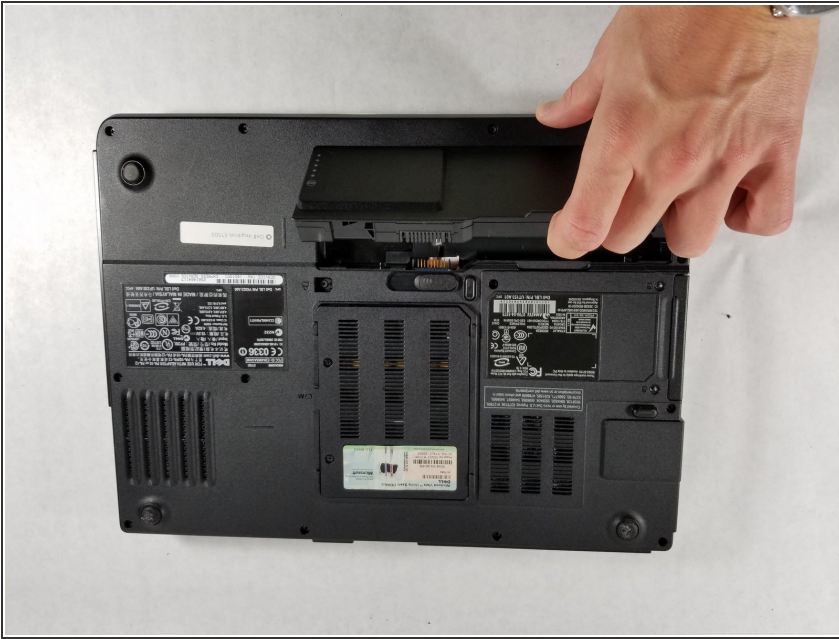
## Step 2



- Locate the battery release switch on the bottom of the laptop.
- Once located slide the switch into the unlock position.



### Step 3



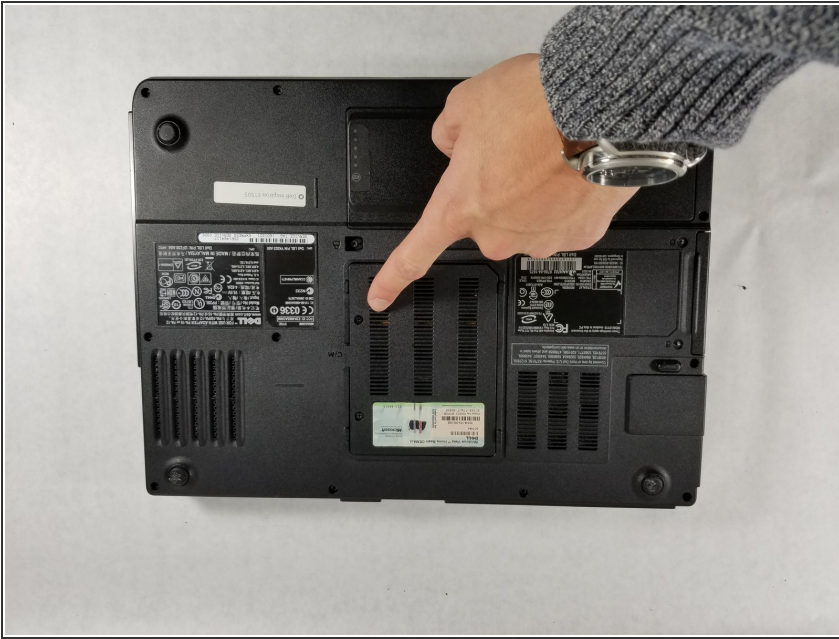
- Locate the “lip” on the laptop to lift the battery outside of the compartment.
- Once the battery is out, you will be able to find the replacement part number in order to purchase a new battery.

### Step 4



- Once the new battery has been acquired take the battery and place it in the empty battery slot.
- Slide the switch into the lock position to secure the new battery.

## Step 5 — RAM



- On the back of the laptop there is a compartment for the RAM for easy access.
- It is located right above the switch for the battery and has two Phillips head screws as well as a sticker for the laptop's product key.
- Unscrew the two screws with a screwdriver and lift the backplate up to unveil the RAM.

## Step 6



- There are two metal tabs on each of the sticks of RAM.
- Press each of the tabs outward and the RAM stick should slide up.
- Gently pull the stick of RAM out and get the product number to get replacement RAM.
- Do this for both of the sticks of RAM.

## Step 7



- **Inserting new RAM:** Line up the RAM by making sure the slot on the RAM stick lines up with the slot on the laptop.
- Insert it at slight angle while it lined up.
- Gently press the stick of RAM down until the two metal tabs snap it back in. Repeat this as necessary.

To reassemble your device, follow these instructions in reverse order.