



Minolta Maxxum QTSI Tripod Mount Replacement

If you are unable to mount your camera to a...

Written By: Jordan Ellery



INTRODUCTION

If you are unable to mount your camera to a tripod, the tripod socket could be broken and may need to be replaced.

TOOLS:

Tweezers (1)

Phillips #00 Screwdriver (1)

Step 1 — Tripod Mount



- With a screwdriver, remove the (7) black Phillips #00 5.0mm screws on the bottom of the camera.

ⓘ The screws are located on the outer edge of the bottom panel.

⚠ Be careful when removing the screws from the panel because they are easy to lose.

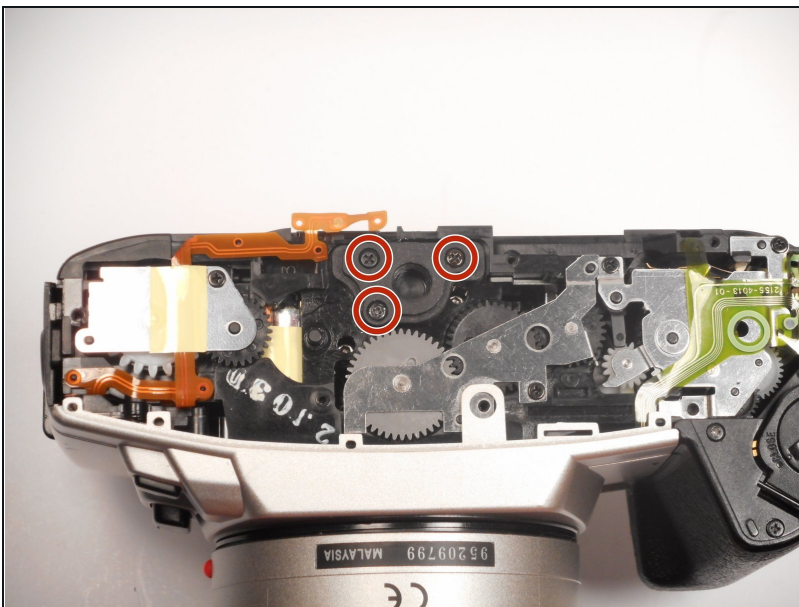
Step 2



① Once all the screws are removed, the panel should easily come off.

- Remove the bottom panel of the camera by placing your index finger and thumb on the outer edges of the panel.
- Pull the bottom panel towards you, it should come off easily.

Step 3

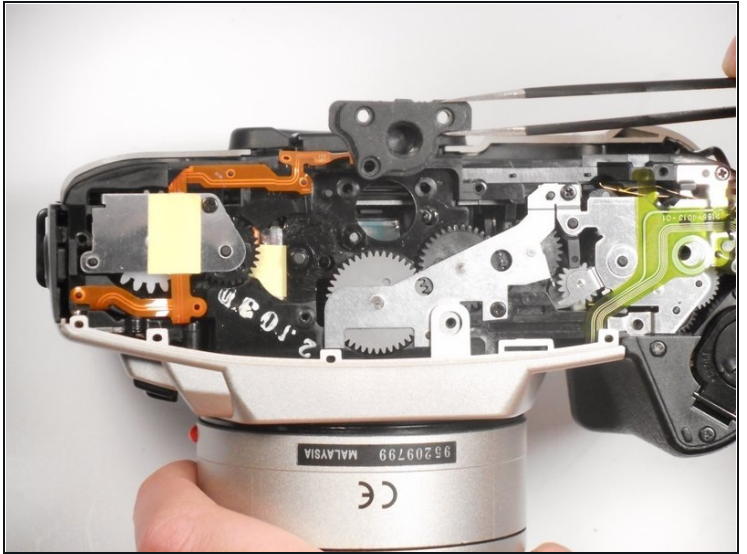
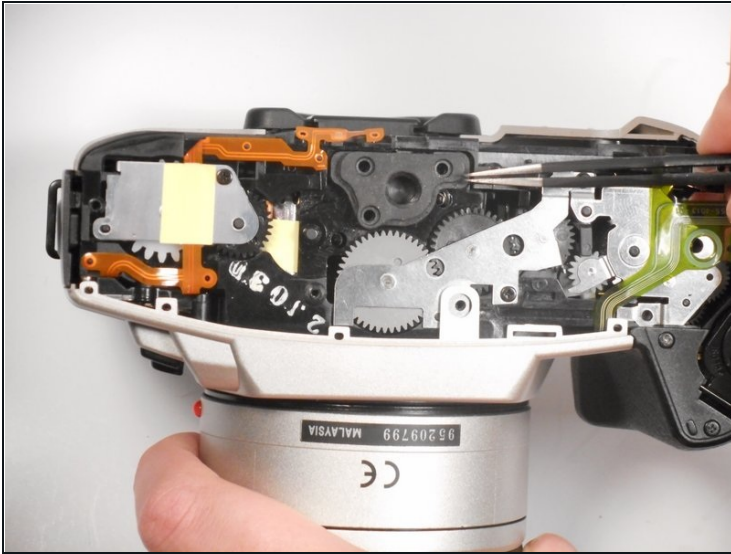


① The tripod socket is visible when the bottom panel is removed.

- Remove the (3) black Phillips #00 6.25mm screws from the tripod socket.

⚠ When the screws are removed, the tripod socket is free and can easily be lost.

Step 4



- Use the [tweezers](#) to gently remove the tripod socket, and replace it.

To reassemble your device, follow these instructions in reverse order.