



# Panasonic Lumix DMC-GF2 Back Cover Replacement

This guide shows how to remove and replace the back cover of the camera.

Written By: Kingsley East



## INTRODUCTION

This guide requires the use of a screw driver and close attention to which screws need to be removed. While following these steps, be careful not to rip out the blue and yellow ZIF ribbons that attach the back cover to the camera.



### TOOLS:

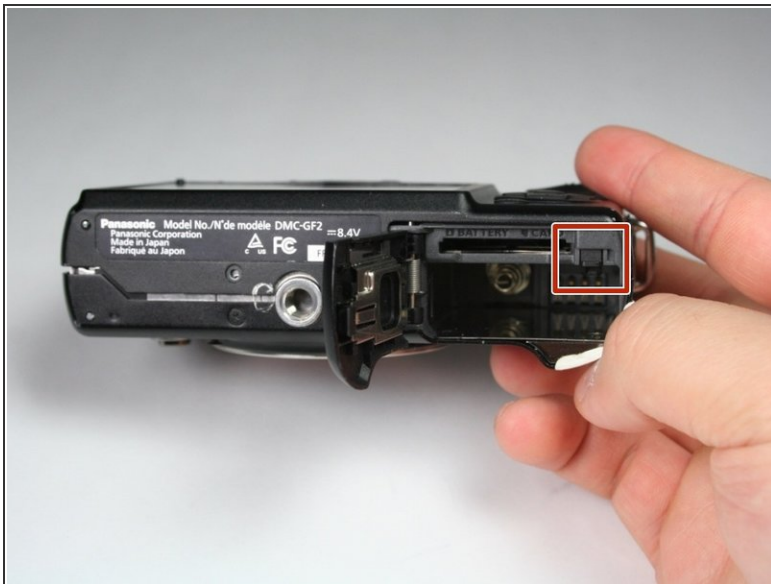
- [Phillips #00 Screwdriver](#) (1)
  - [Heavy-Duty Spudger](#) (1)
-

## Step 1 — Battery



- On the bottom of the camera, use your finger to push the lock button to the open position which will cause the hinged door to swing open.

## Step 2



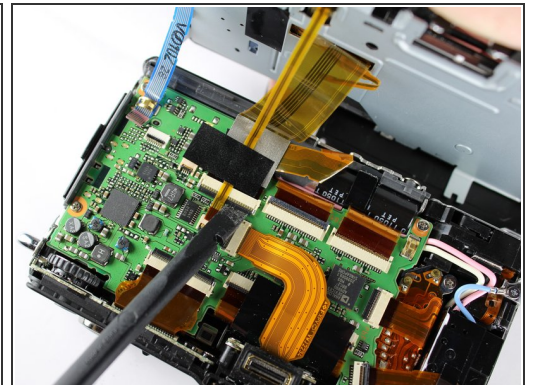
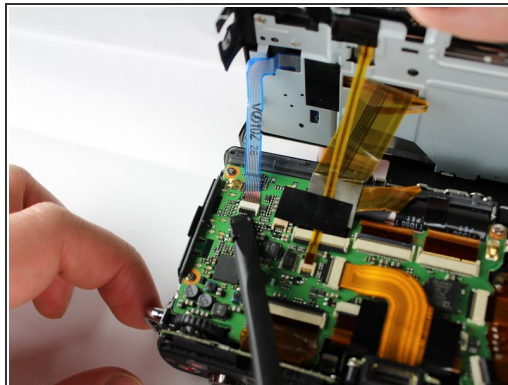
- Push the small black tab that holds the battery with your finger to release the battery.
- Use your fingers to pull the battery out of the camera.

## Step 3 — Back Cover



- Using a Phillips #00 screwdriver, remove six 2.69mm, silver screws located on the two short sides of the camera and the bottom side.

## Step 4

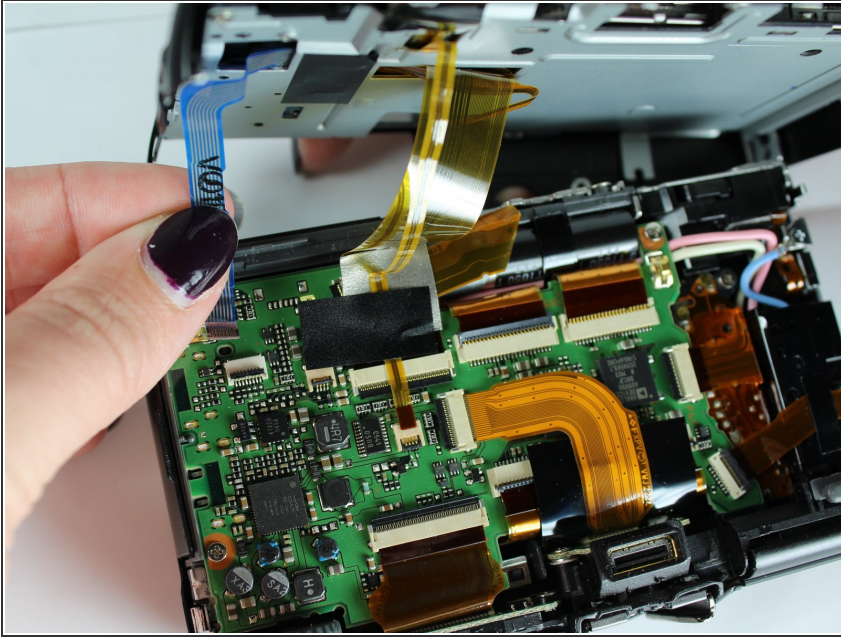


- Gently lift up the back cover to access the ZIF connectors for the blue and yellow ribbons.
- To unlock the ZIF connectors, gently push the black portion of the lock from a flat position to an upright position using a spudger.

⚠ Take caution not to rip the ribbons out of the ZIF connectors when lifting the back panel.

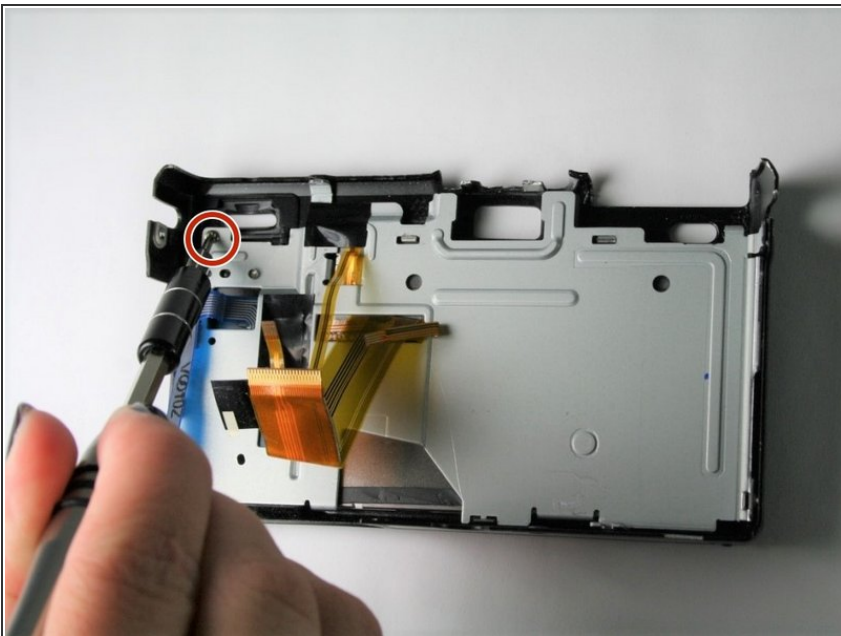


## Step 5



- Gently push the blue and yellow ribbons out of the unlocked ZIF connectors using your fingers.

## Step 6



- Using a Phillips #00 screwdriver, remove the 3.5 mm silver screw from the upper left hand corner of the back cover.

## Step 7



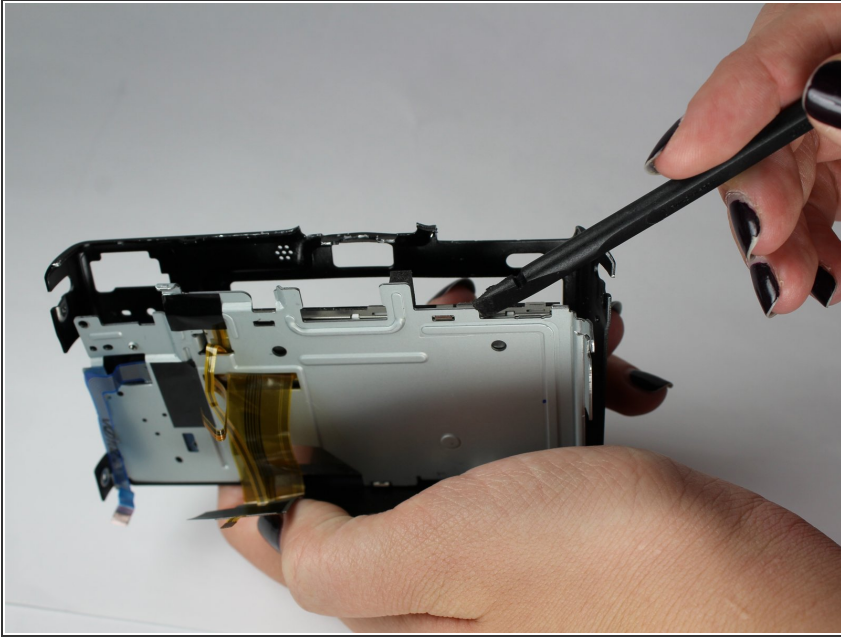
- Using a spudger, lift up and remove the plastic cover piece from the back cover.
- ❗ Plastic cover may fall off without prying.

## Step 8



- Using a Phillips #00 screwdriver, remove the 2.69 mm silver screw located beneath the plastic piece that was previously removed.

## Step 9



- Using a spudger, lift up and separate the heavier metal cover from the light, plastic back cover.
- ⓘ Metal cover may fall off without prying.

To reassemble your device, follow these instructions in reverse order.