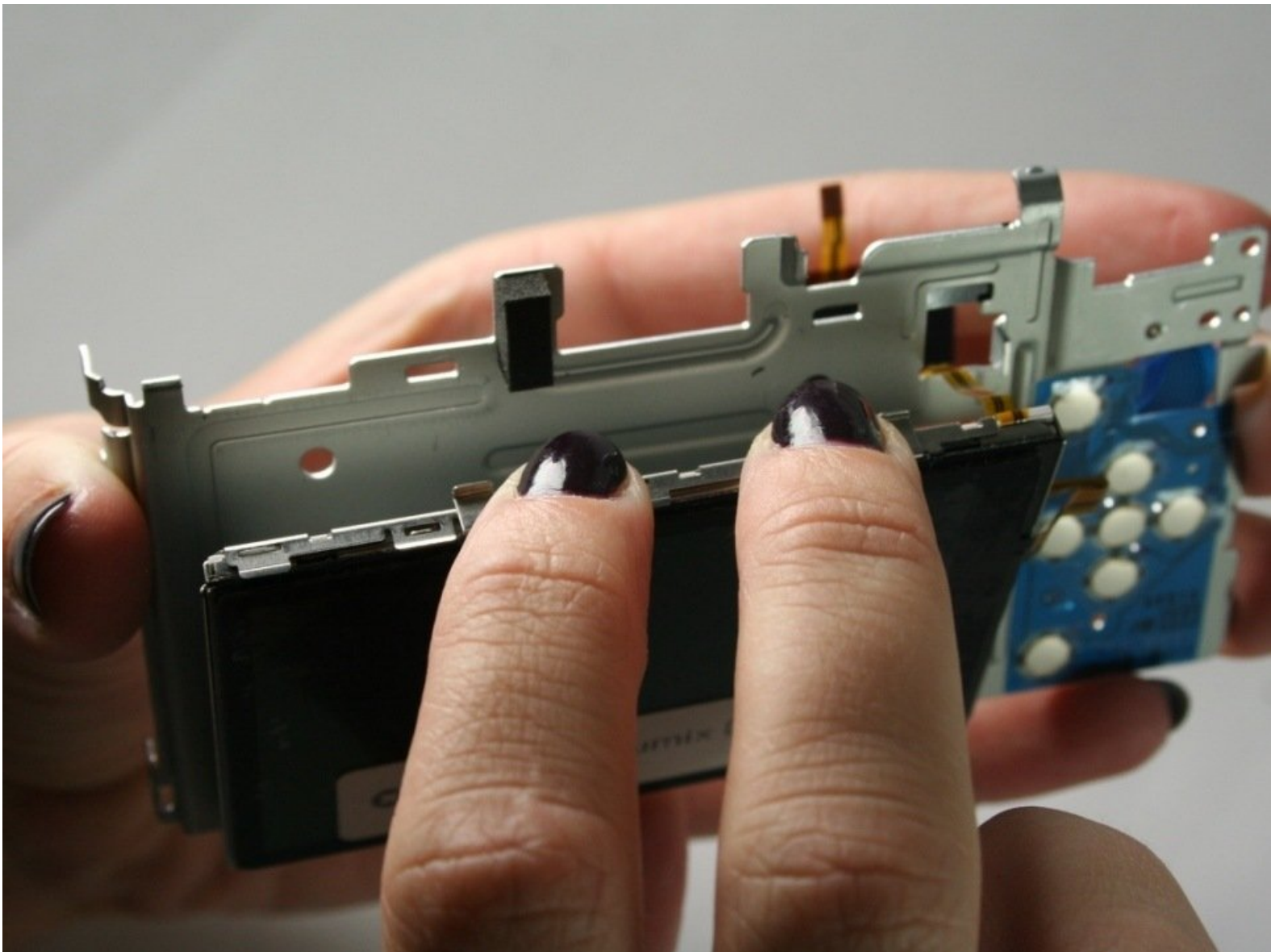




Panasonic Lumix DMC-GF2 LCD Replacement

This guide shows users how to replace the LCD screen on the back of the camera.

Written By: Kingsley East



INTRODUCTION

This guide requires careful handling of the inner parts of the camera. One needs a screw driver and spudger tool to open the camera and remove its parts.

TOOLS:

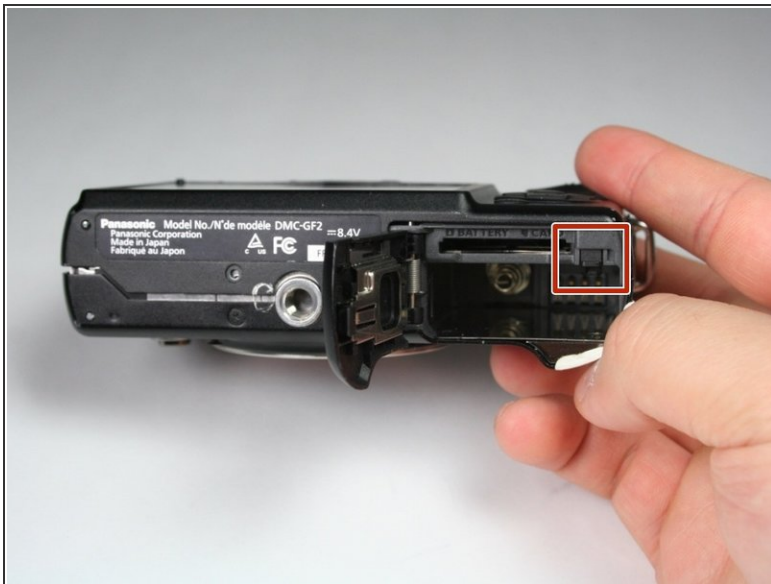
- [Heavy-Duty Spudger](#) (1)
 - [Phillips #00 Screwdriver](#) (1)
-

Step 1 — Battery



- On the bottom of the camera, use your finger to push the lock button to the open position which will cause the hinged door to swing open.

Step 2



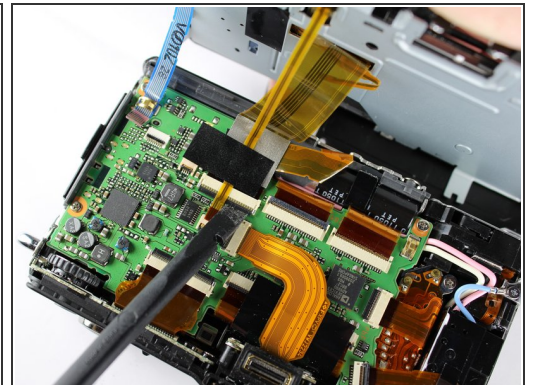
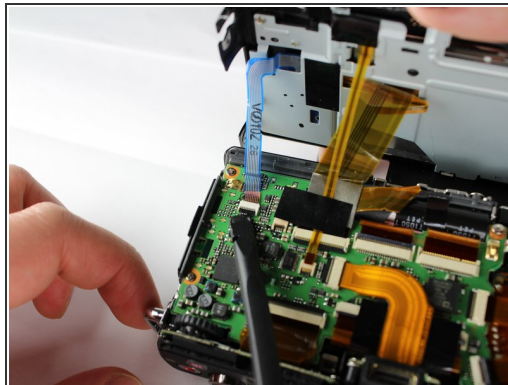
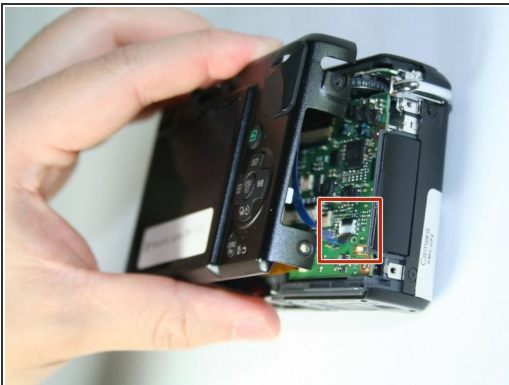
- Push the small black tab that holds the battery with your finger to release the battery.
- Use your fingers to pull the battery out of the camera.

Step 3 — Back Cover



- Using a Phillips #00 screwdriver, remove six 2.69mm, silver screws located on the two short sides of the camera and the bottom side.

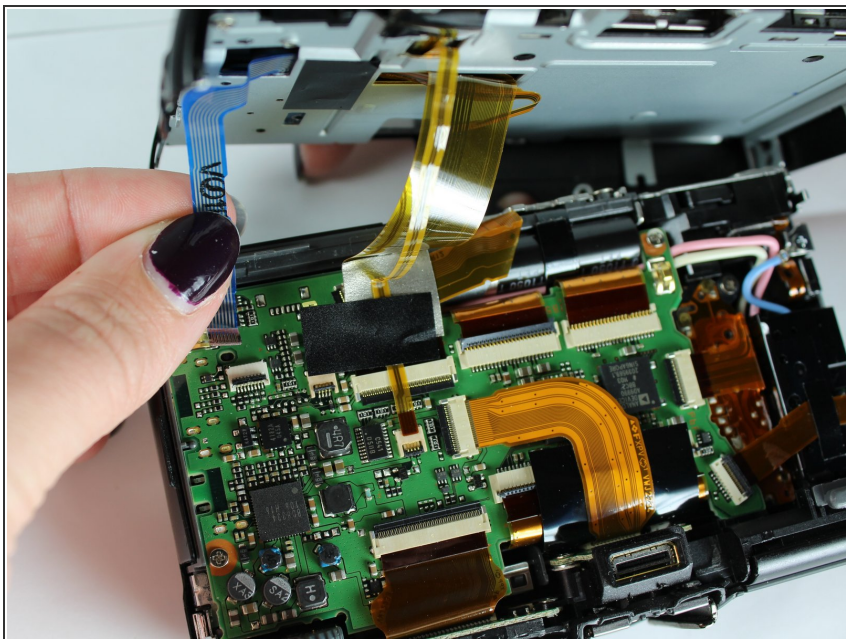
Step 4



- Gently lift up the back cover to access the ZIF connectors for the blue and yellow ribbons.
- To unlock the ZIF connectors, gently push the black portion of the lock from a flat position to an upright position using a spudger.

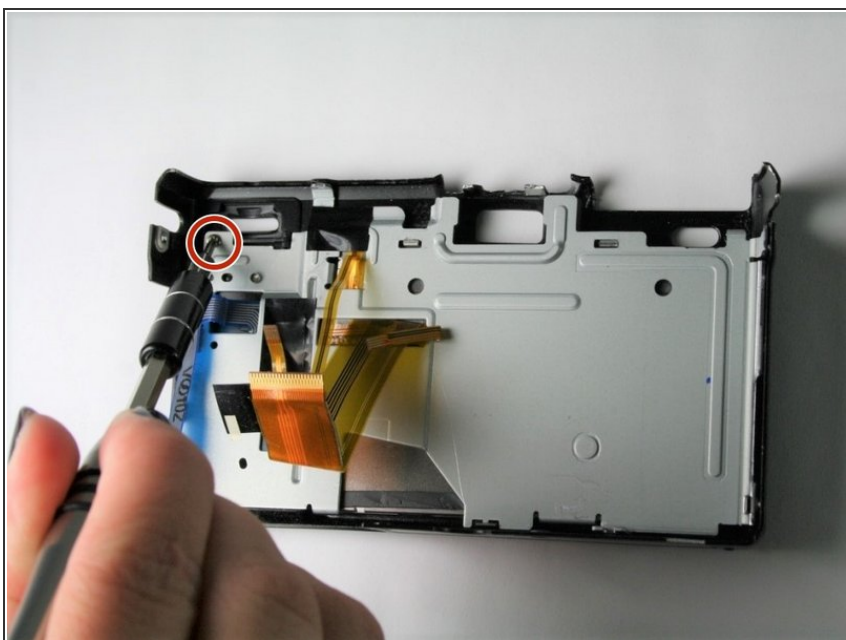
⚠ Take caution not to rip the ribbons out of the ZIF connectors when lifting the back panel.

Step 5



- Gently push the blue and yellow ribbons out of the unlocked ZIF connectors using your fingers.

Step 6



- Using a Phillips #00 screwdriver, remove the 3.5 mm silver screw from the upper left hand corner of the back cover.

Step 7



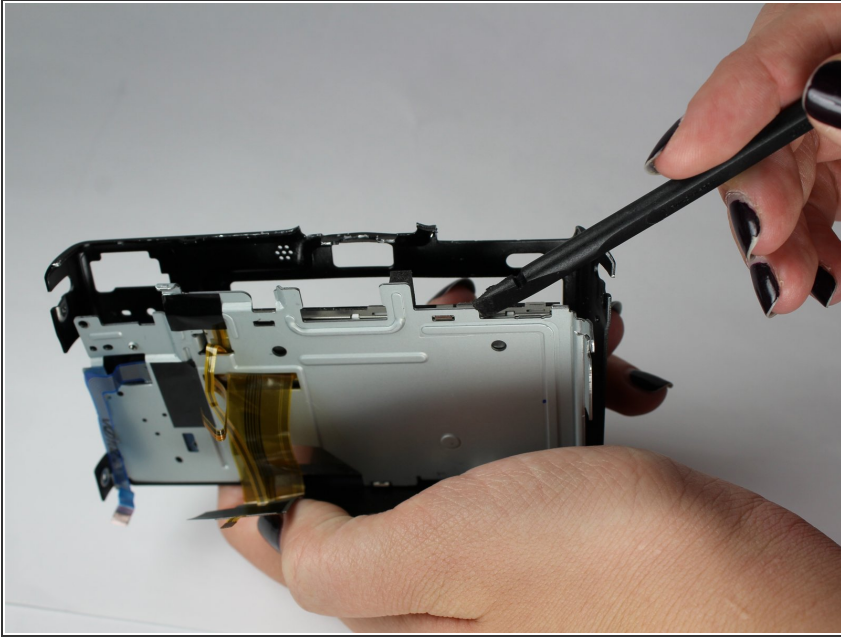
- Using a spudger, lift up and remove the plastic cover piece from the back cover.
- ❗ Plastic cover may fall off without prying.

Step 8



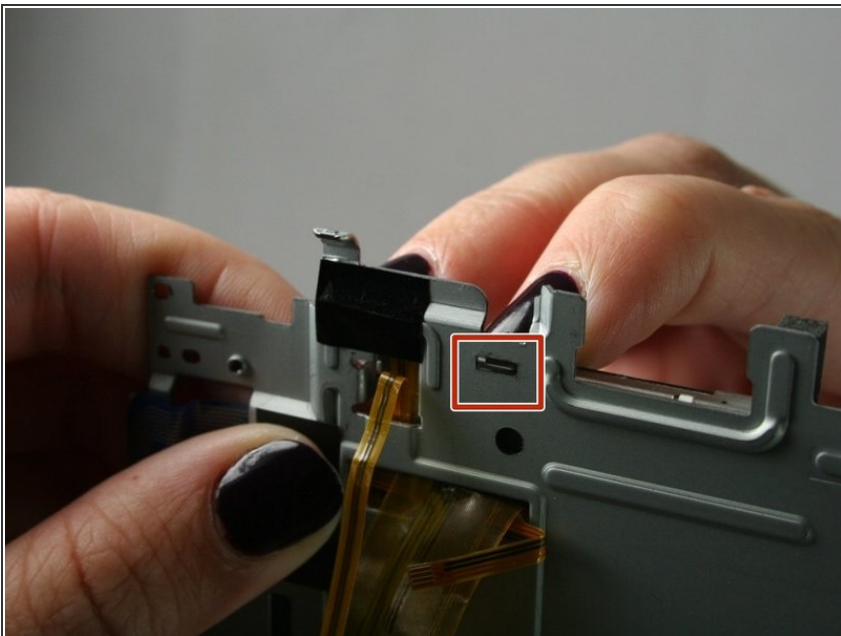
- Using a Phillips #00 screwdriver, remove the 2.69 mm silver screw located beneath the plastic piece that was previously removed.

Step 9



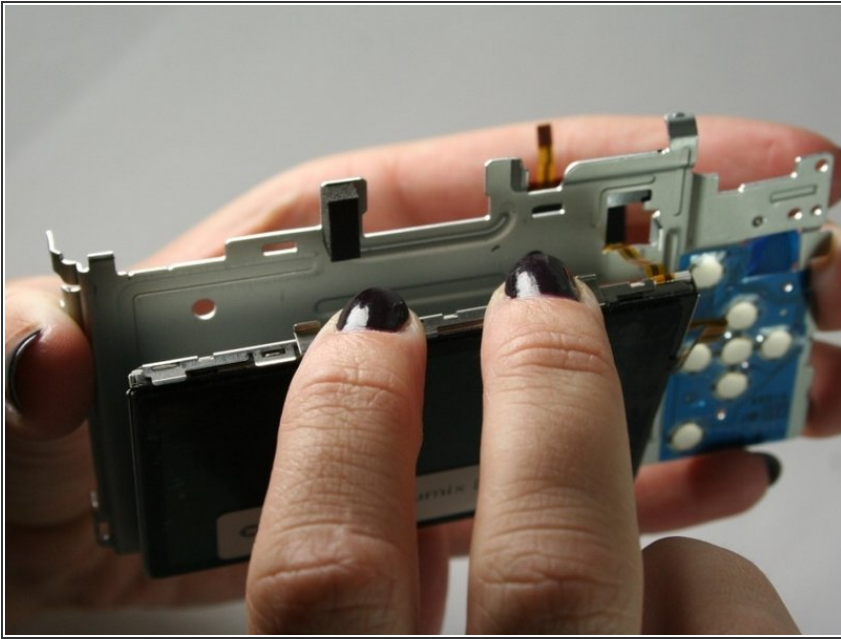
- Using a spudger, lift up and separate the heavier metal cover from the light, plastic back cover.
- ⓘ Metal cover may fall off without prying.

Step 10 — LCD screen



- Using your fingers, push down on the small, metal hooks that are a part of the metal cover and attach on top of the LCD screen.

Step 11



- Using your fingers, remove the LCD screen from the metal cover. This may require some back and forth movements of the LCD screen until it detaches completely from the bottom hooks.

⚠ Careful not to rip the yellow ribbons when removing the LCD screen from the metal cover.

To reassemble your device, follow these instructions in reverse order.