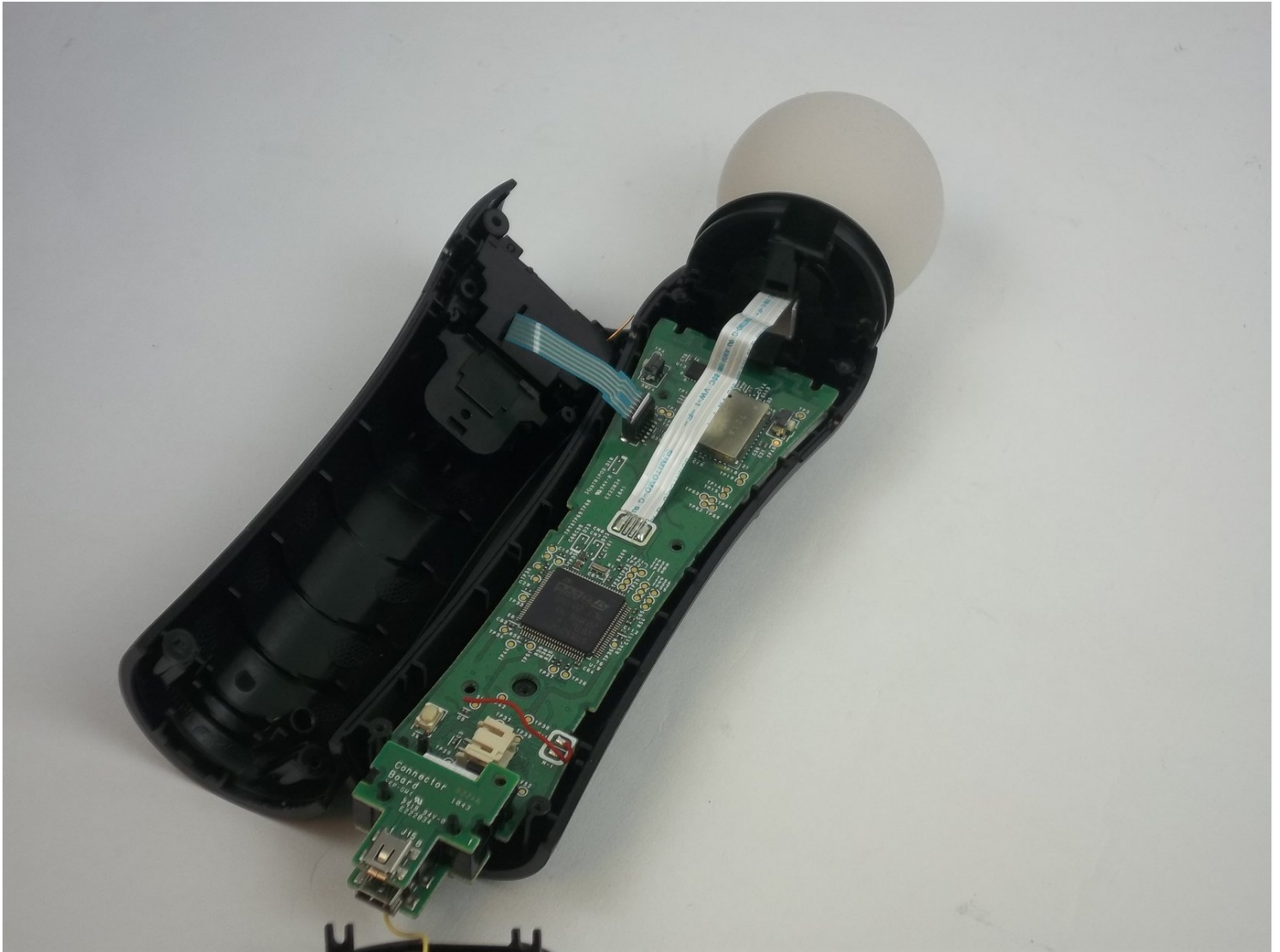




PlayStation Move Motherboard Replacement

Use this guide to replace a faulty Playstation...

Written By: Destiny Jenkins



INTRODUCTION

Use this guide to replace a faulty Playstation Move Motherboard.

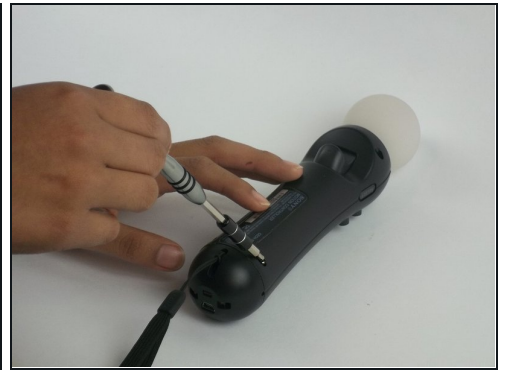
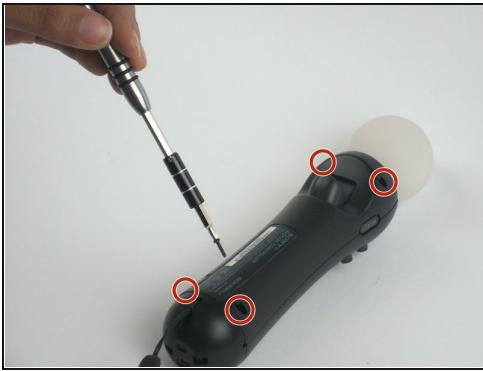
TOOLS:

[Tweezers](#) (1)

[iFixit Opening Tool](#) (1)

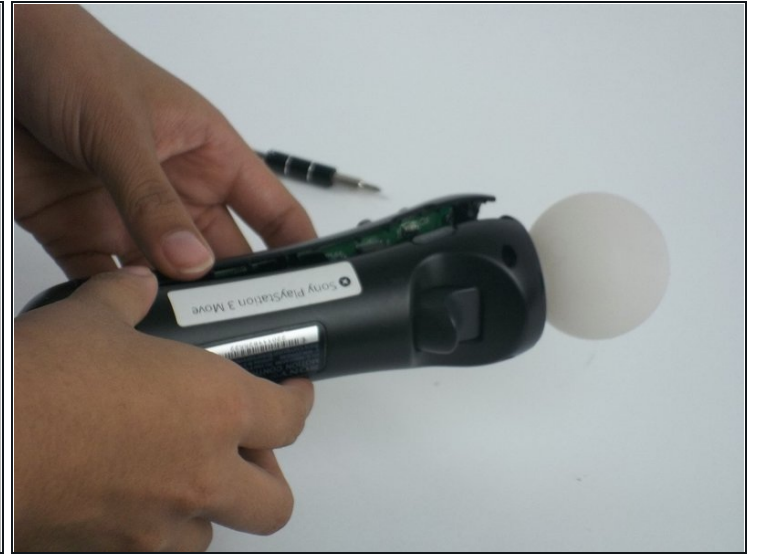
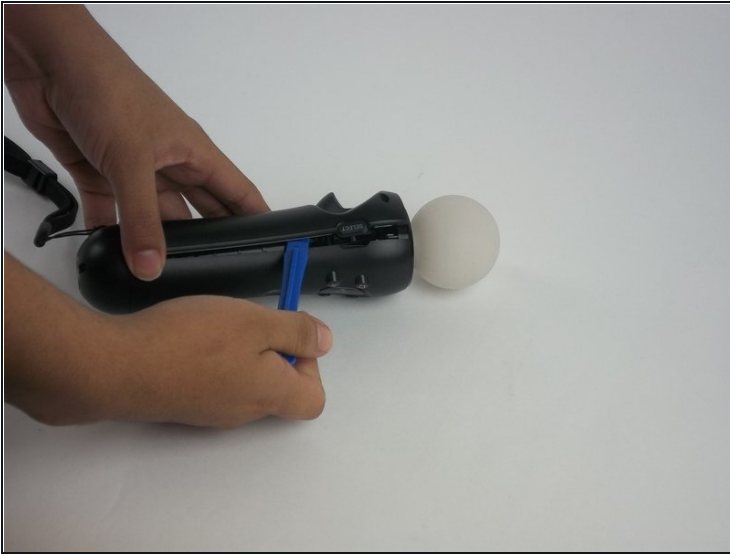
[Phillips #0 Screwdriver](#) (1)

Step 1 — Battery



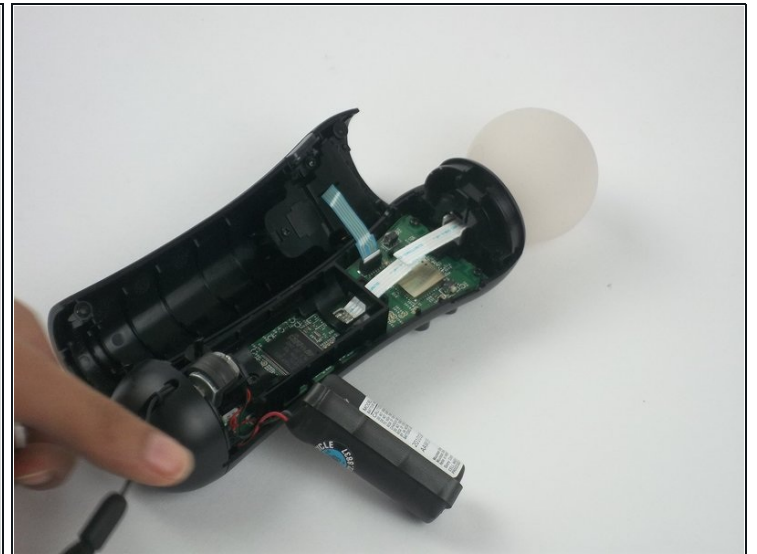
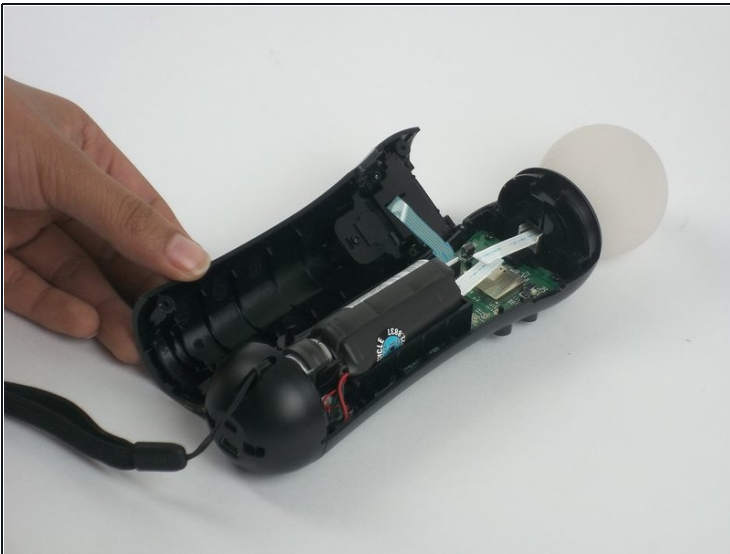
- Using a Phillips #0 screwdriver, remove the four 10mm screws located on the back of the device.

Step 2



- Insert the plastic opening tool at the indent.
- Gently use a forward and backward motion to safely pop open the cover.
- Using your hands to further pull it apart.

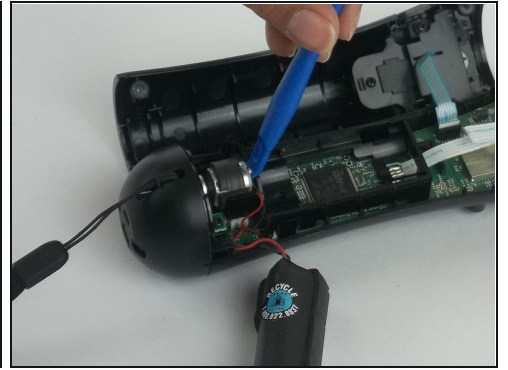
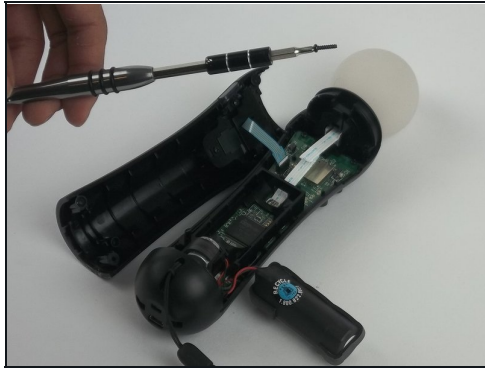
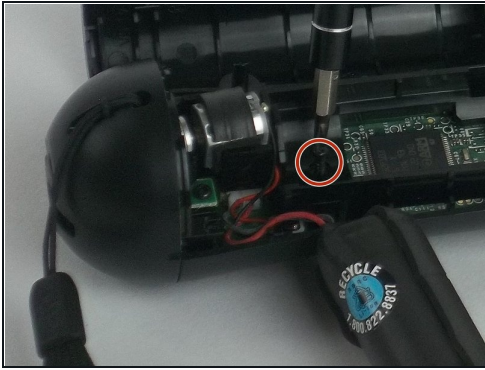
Step 3



- Once the device is opened, lift the battery out of the black plastic holder.

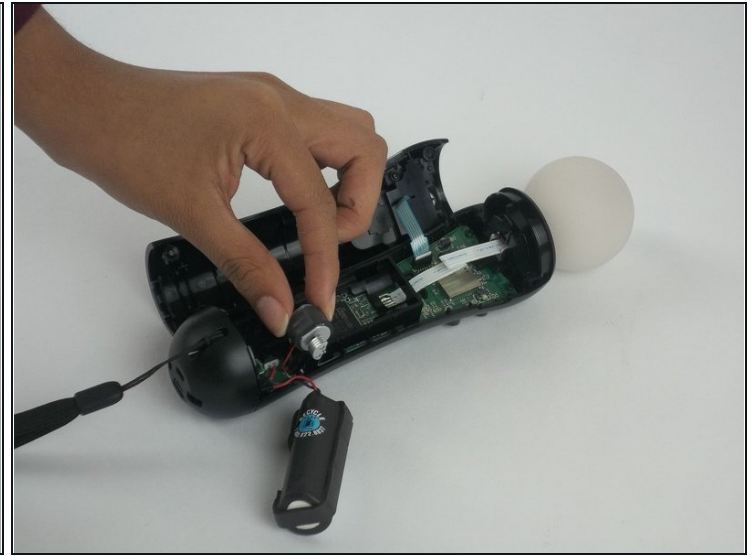
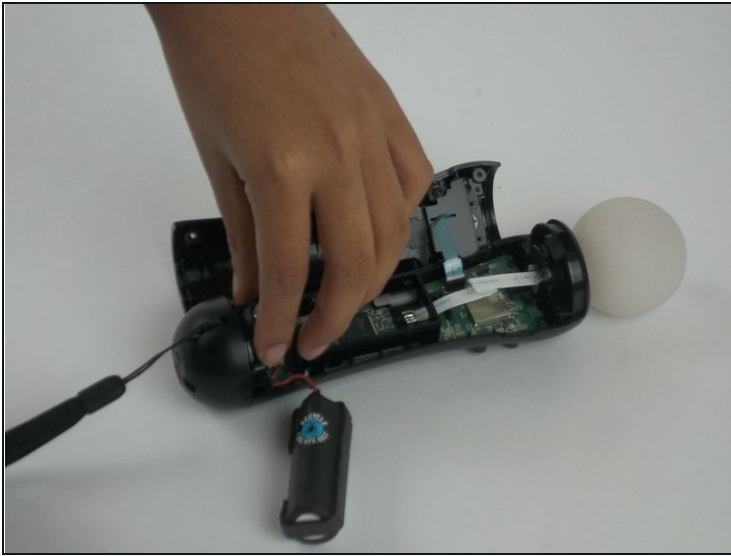
⚠ Carefully pull the battery out and ensure that it's wires are still connected to the inside.

Step 4



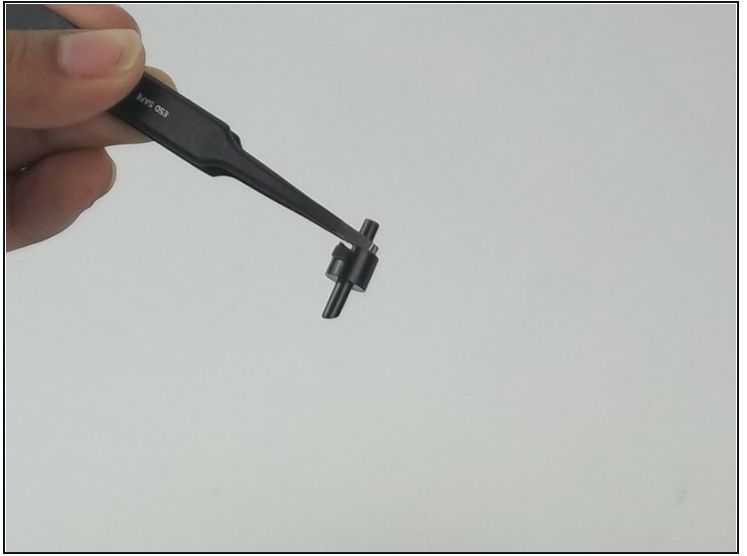
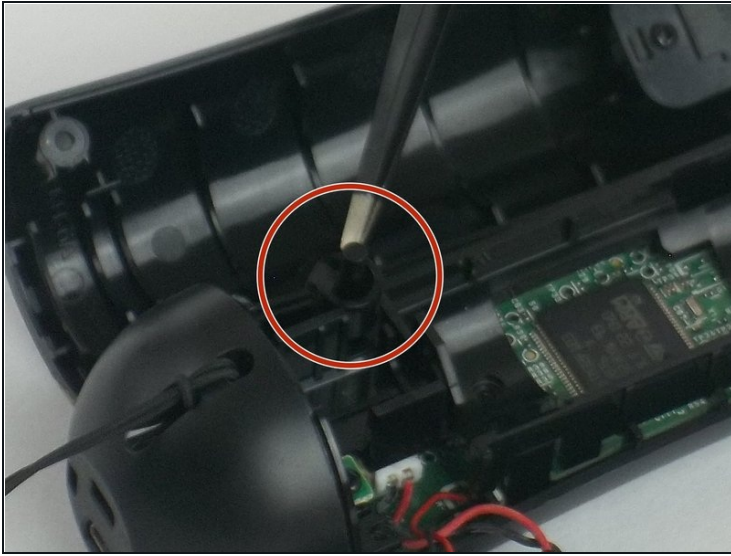
- Using a Phillips head screwdriver, remove the 9mm screw located to the right of the battery, which is connected to the inner plastic frame.
- Using the plastic opening tool carefully take out the grey cylindrical piece (vibrator) that is also attached to a wire.

Step 5



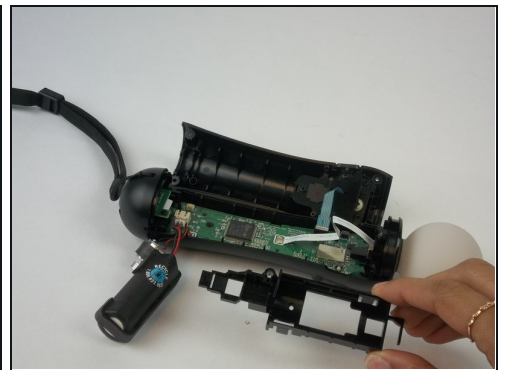
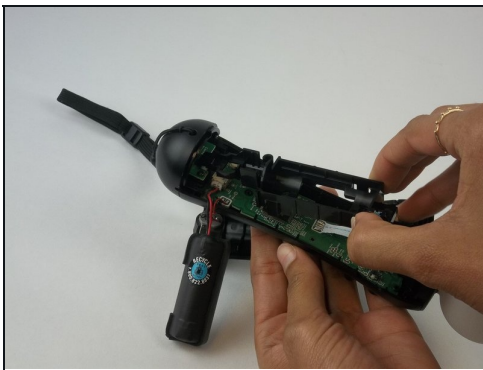
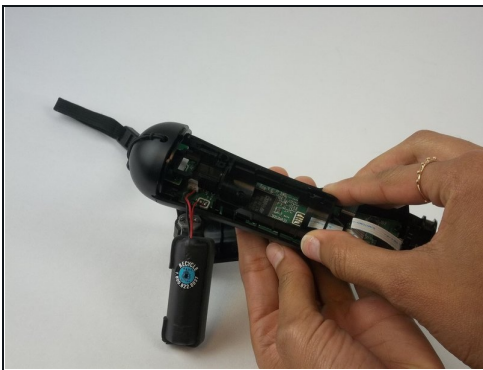
- Gently pull out the small grey cylindrical piece (vibrator).
- ① Removing this piece makes it easier to access the wire connection of the battery and remove it.

Step 6



- Using [tweezers](#), remove the small piece with a cylindrical top that is located to the left of the inner plastic frame.

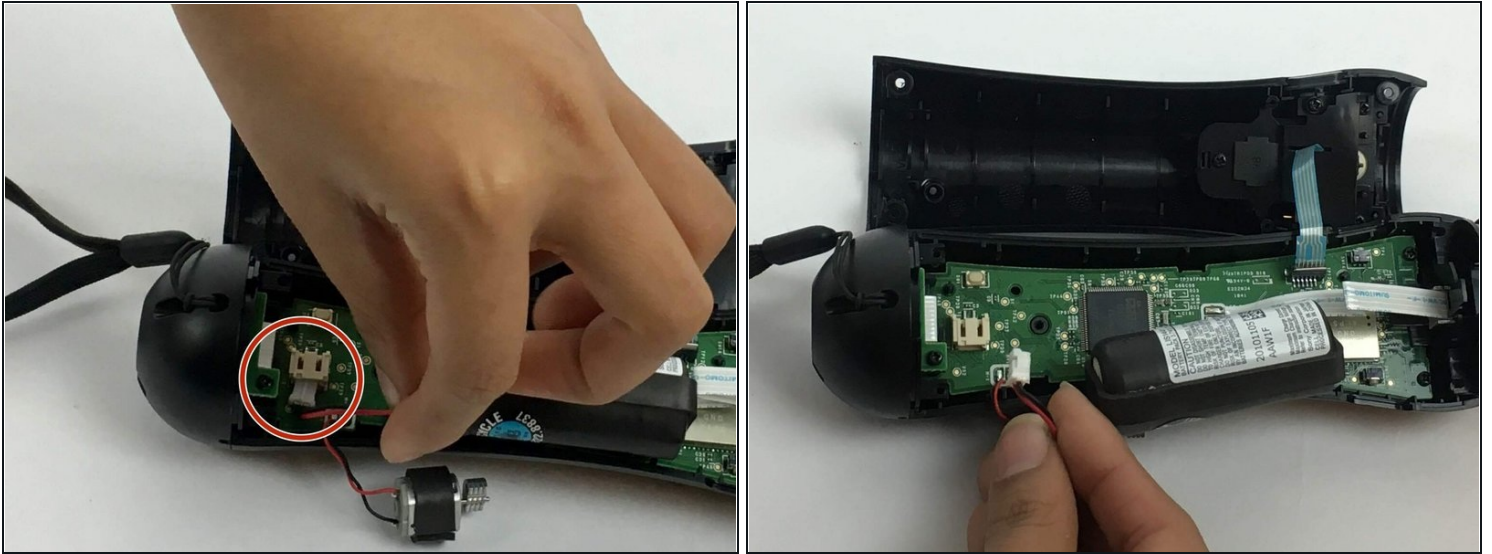
Step 7



- Using one hand to hold the device, and the other hand to squeeze the inner plastic frame.
- Remove by squeezing the inner plastic frame, lift and pull it towards you.

⚠ While removing the frame, be extremely careful because it could damage the frame or the motherboard.

Step 8



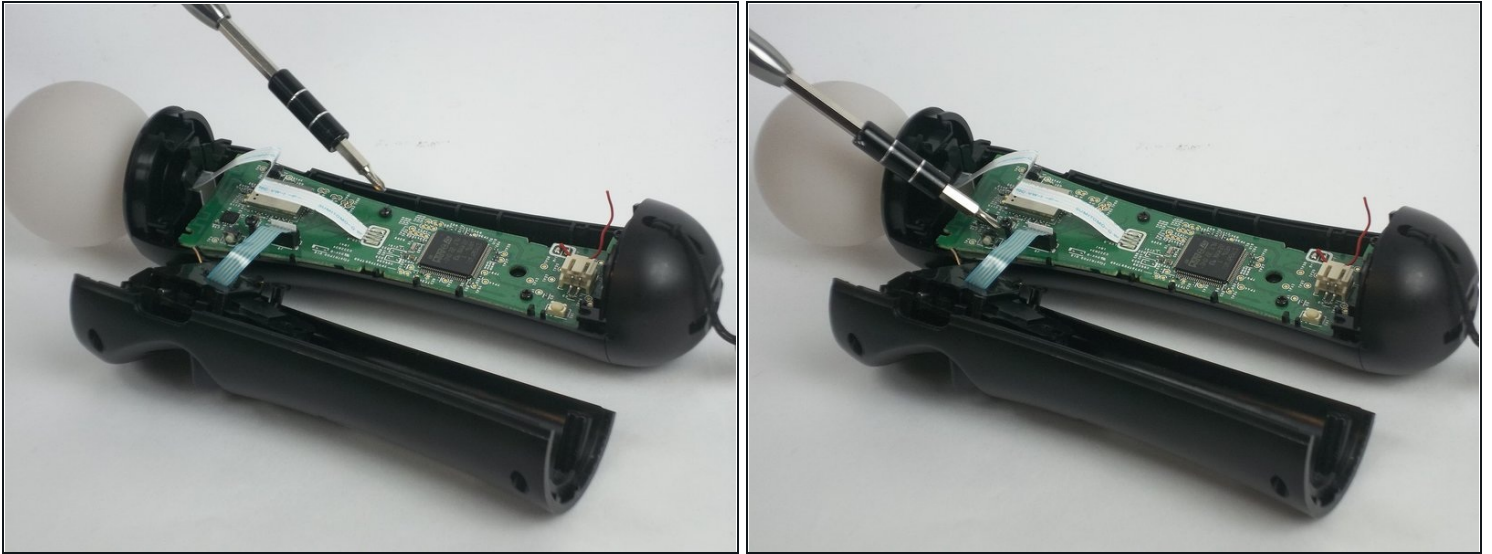
- Gently pull on the white piece connecting the battery and the connector.

Step 9 — Motherboard



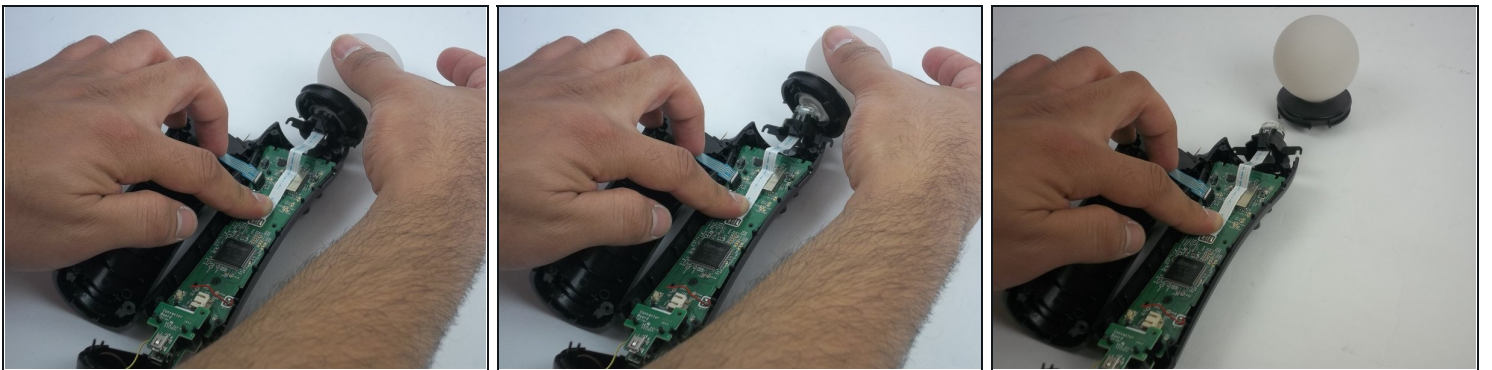
- Remove the five 1.2 mm screws from upper portion of the controller.
- ① If you are replacing the **trigger button**, continue to step 13.

Step 10



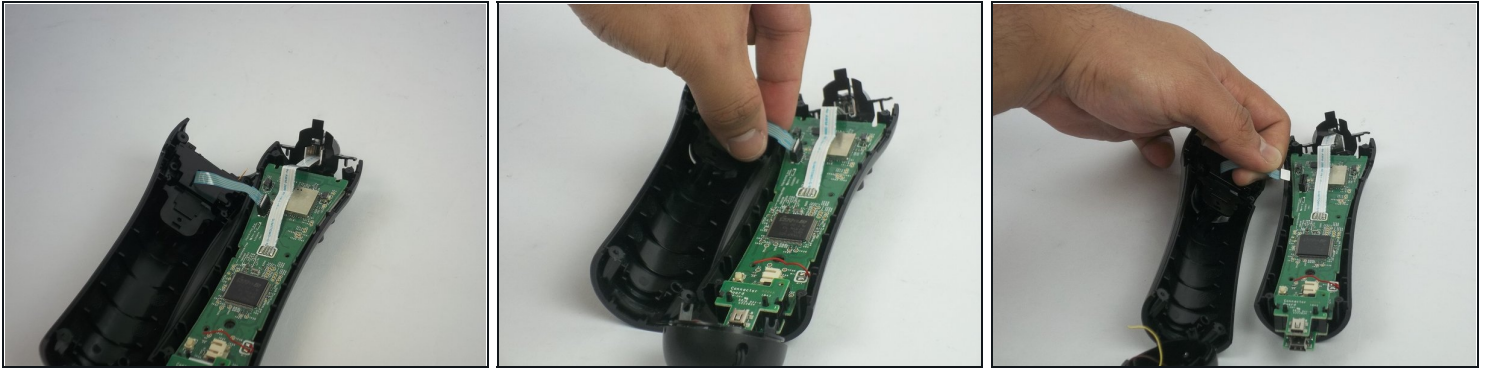
- Remove the two 1.2mm Phillips #1 screws.

Step 11



- Cautiously remove the circular white piece at the top without removing the LED inside.

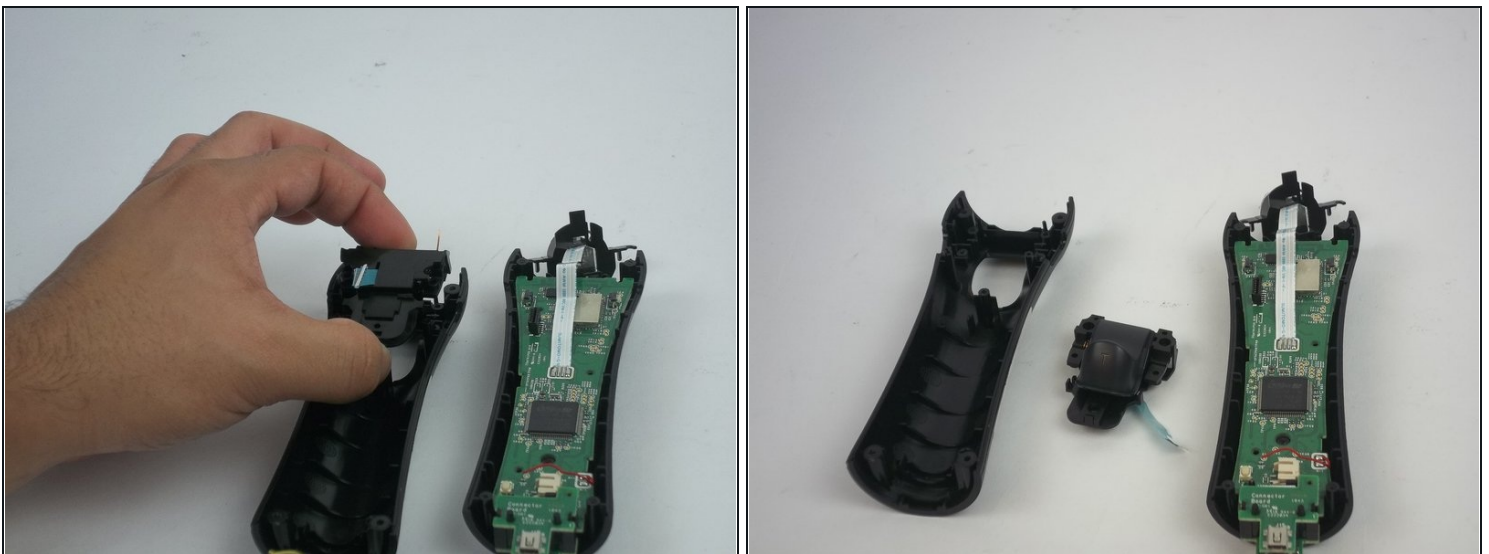
Step 12



- Remove the blue strip that is connected to the trigger button from the motherboard.

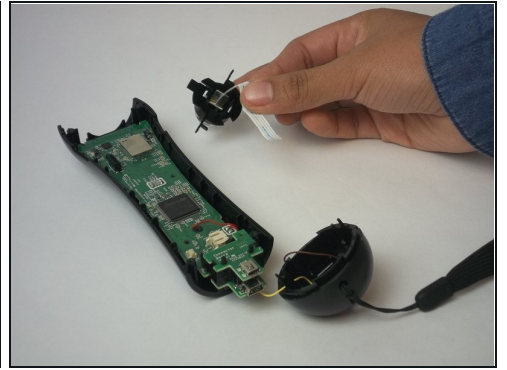
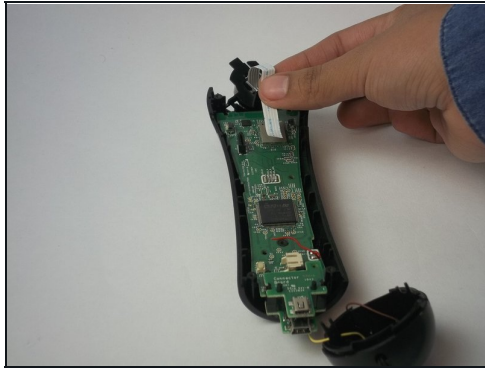
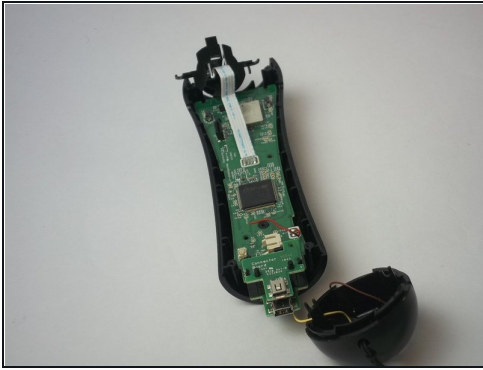
⚠ Be careful to gently detach it from the motherboard. The strip may rip if too much strength is applied.

Step 13



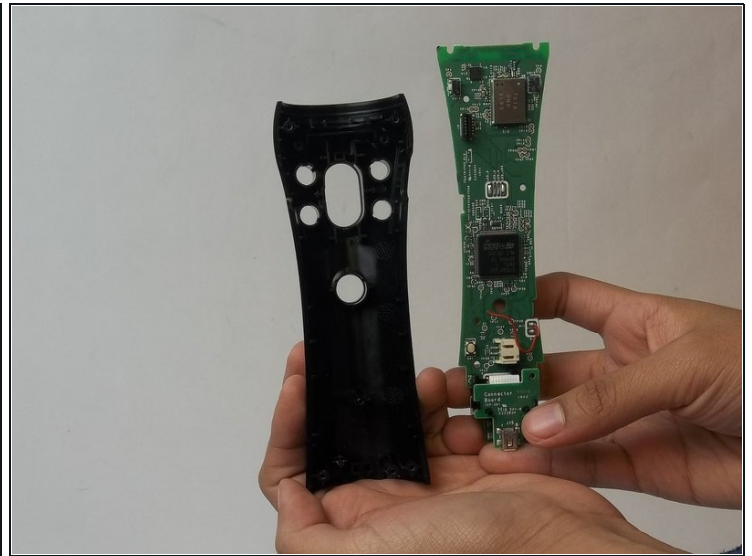
- Remove the trigger button from the controller.

Step 14



- Remove the LED light by removing the white strip.
- ① If you are replacing the **LED light**, continue to [Step 17](#).

Step 15



- Remove the motherboard from the plastic case.

To reassemble your device, follow these instructions in reverse order.