



# Dell Studio 1555 RAM Replacement

Memory replacement guide for the Dell Studio 1555.

Written By: Josh Boone



---

## INTRODUCTION

The memory of your laptop may become corrupted or full and need to be replaced. A Philips 1 screwdriver is required for this guide.



### TOOLS:

- [Phillips #1 Screwdriver](#) (1)
-

## Step 1 — Battery



- Turn off and unplug the laptop.
  - ⚠ Failure to properly turn off device before handling the battery could result in electrical shock.
- Flip the laptop so the underside is facing up with the battery closest to you.

## Step 2



- Slide the locking switch to the left to release the battery.

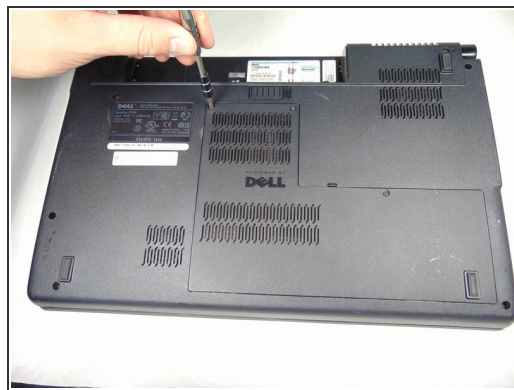
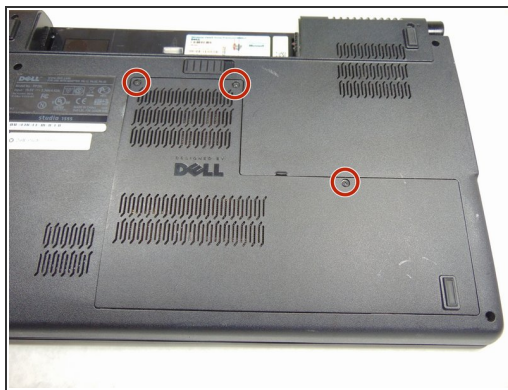
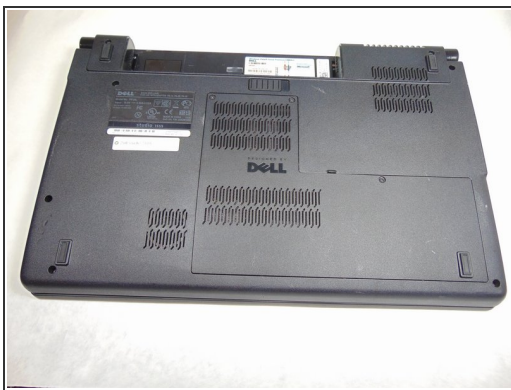


## Step 3



- Gently pull the battery away from the device.

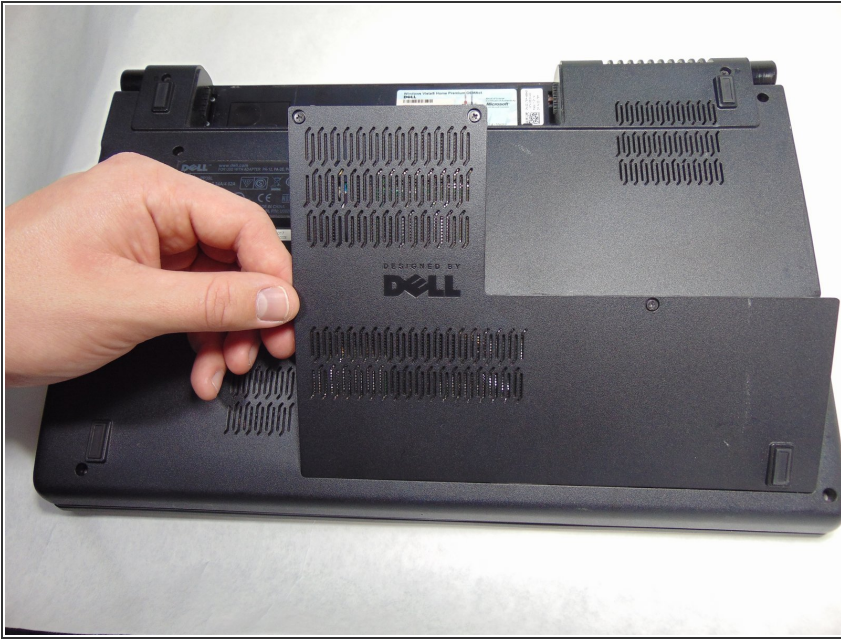
## Step 4 — Back Panel



- Loosen the three 5mm screws from the back panel using the # 1 Philips screwdriver.

**i** The three 5mm screws will stay in place on the back panel.

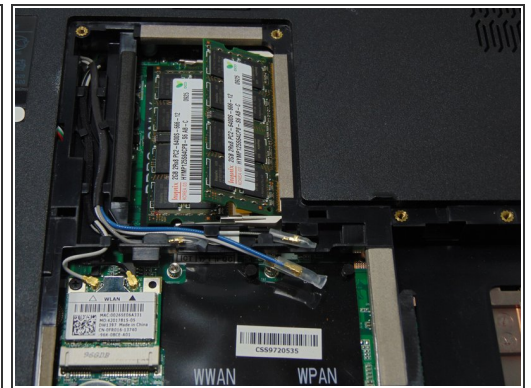
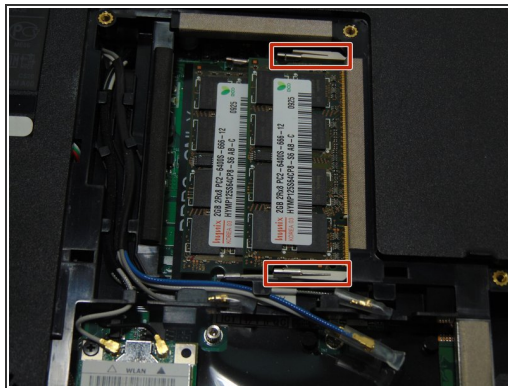
## Step 5



- Carefully remove the separated back panel.

⚠ If the back panel is difficult to remove and feels like it is going to break, DO NOT force it. Check to confirm that all the screws are unscrewed all the way before attempting again.

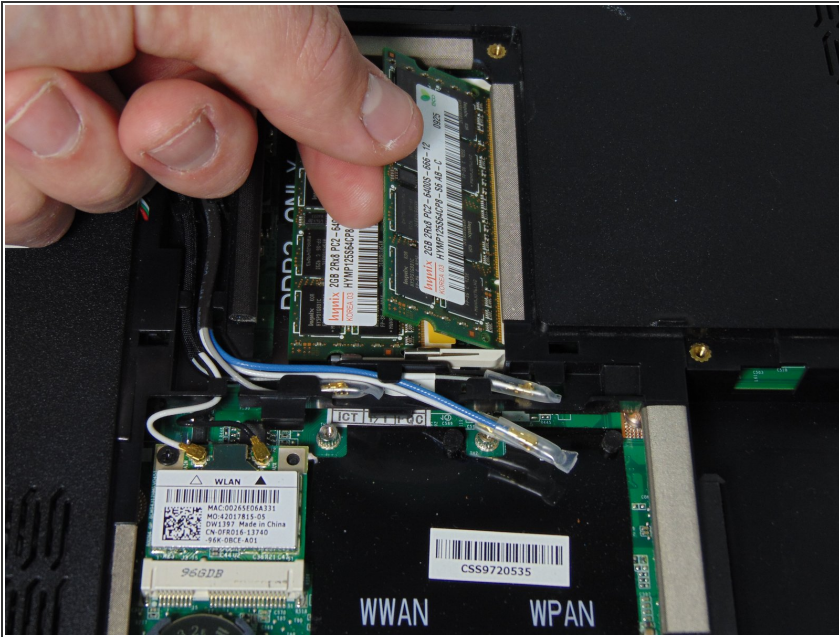
## Step 6 — RAM



- Press the tabs outwards to release the tabs. The memory stick is spring loaded and will be released at an angle.



## Step 7



- Gently remove the memory stick from the slot.

## Step 8



- Once the first memory stick is removed, press the tabs outwards to release the tabs. The memory stick is spring loaded and will be released at an angle.

## Step 9



- Gently remove the memory stick from the slot.

To reassemble your device, follow these instructions in reverse order.