



Canon PowerShot SX150 IS Prerequisite

Prerequisite Only

Written By: Sam Blanton



INTRODUCTION

Prerequisite Only

TOOLS:

[Tweezers](#) (1)

[JIS Driver Set](#) (1)

Step 1 — Canon PowerShot SX150 IS Prerequisite



- Remove the two 2mm screws above the screen using the size J000 screwdriver.

Step 2



- Remove the two 5mm screws from the side of the camera with the J000 head screw driver.
- Using the same screwdriver, remove the one 5mm screw from the other side of the camera located under the A/V Out flap.

Step 3



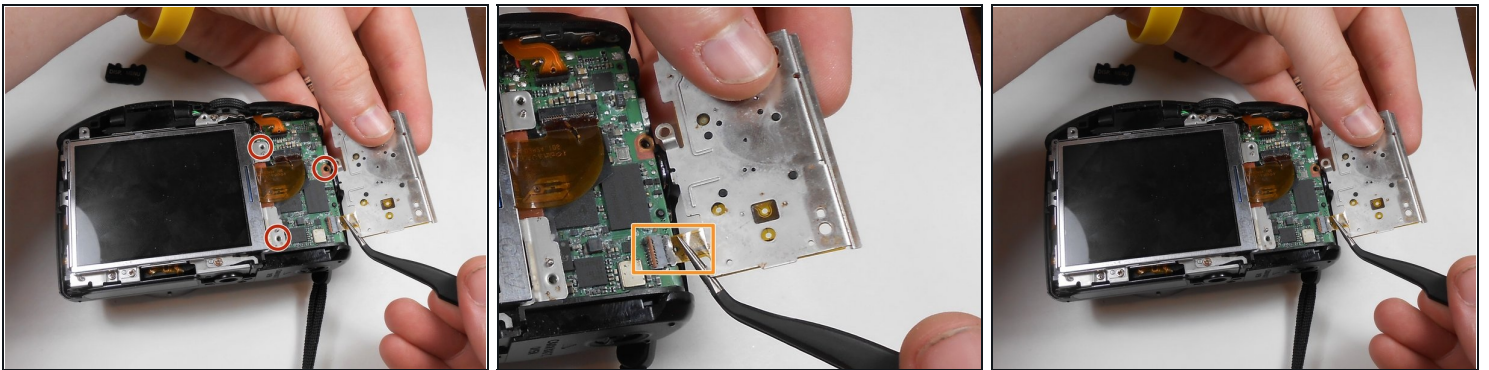
- Remove two 4mm screws from the bottom of the camera with the J000 head screw driver.

Step 4



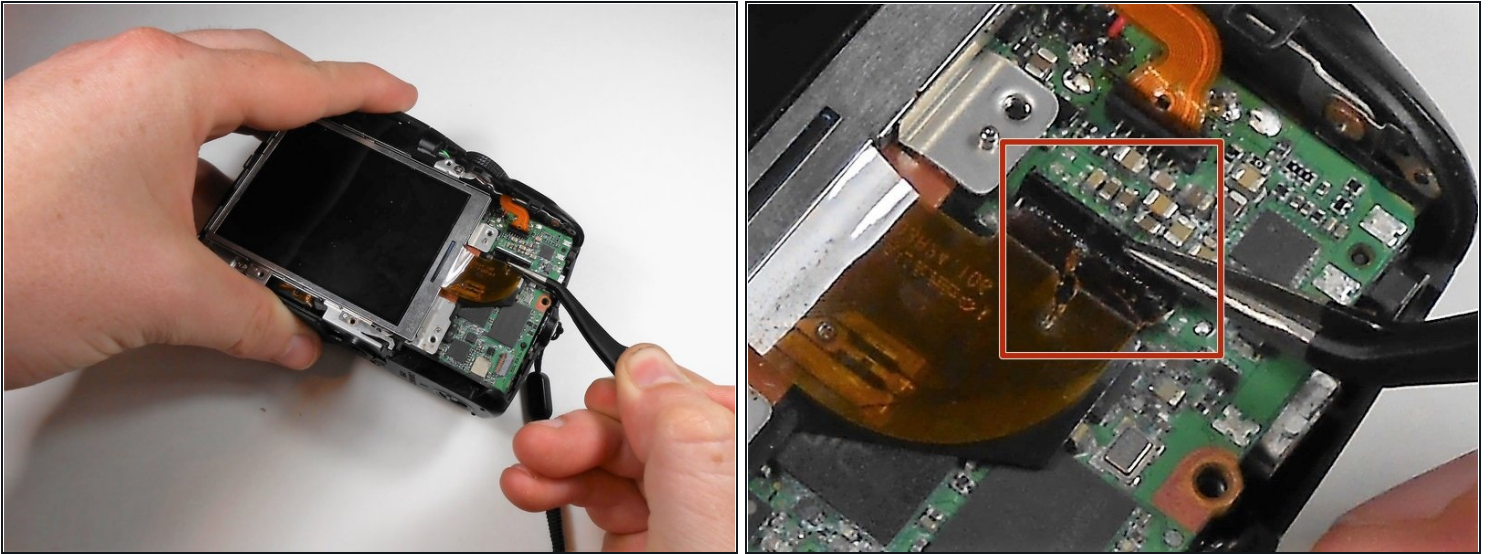
- Remove the plastic panel surrounding the back screen.

Step 5



- Remove the three 3mm screws using the size J000 screw driver from the button plate.
- Gently flip up the flex ribbon lock and remove the flex ribbon using [tweezers](#).
- Move the button plate out of the way.

Step 6



ⓘ There is a black flex ribbon lock that must be lifted and unlocked with your tweezers before this flex ribbon will detach.

⚠ Any small tear could ruin the flex ribbon. Be very gentle while removing it.

- Gently lift the lock and detach the flex ribbon from the circuit board with the tweezers.

Step 7



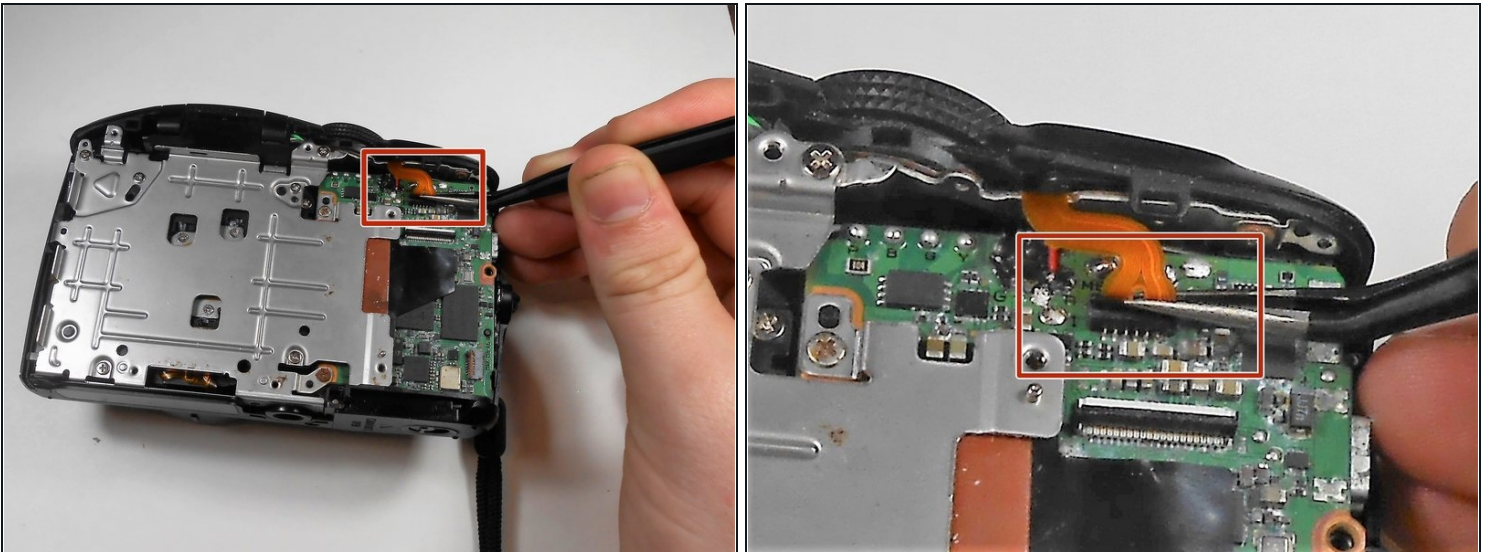
- Remove the two 2mm screws from the bottom of the screen with the size J000 screw driver.
- You can then lift the screen out of place and set it aside.

Step 8



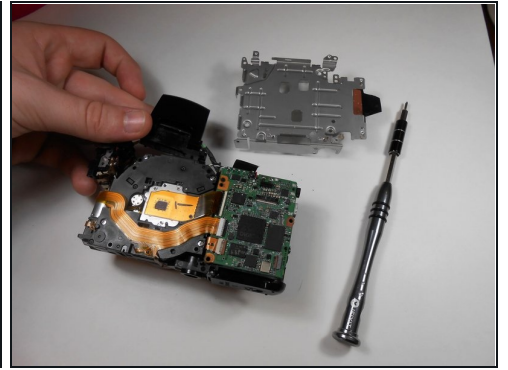
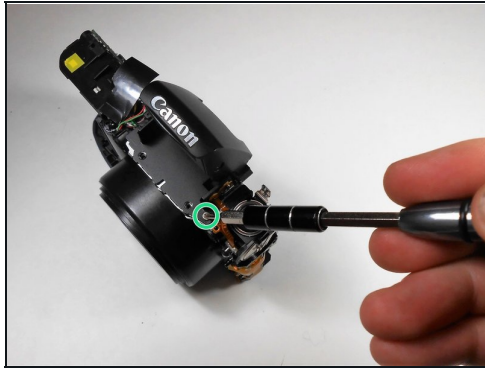
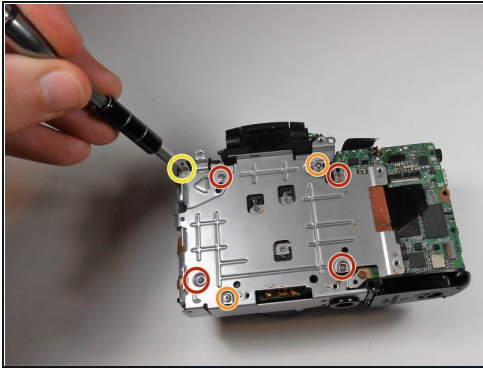
- With the J000 Philips head screwdriver, remove the two 2mm screws from under the flash.
- Using the same screwdriver, remove the two 5mm screws from the bottom. One is under the battery door.
- With the same screwdriver, remove the 2mm screw at the top of the metal plate.

Step 9



- Gently detach the flex ribbon with your tweezers before removing the front plate.

Step 10



- Using the J000 Philips head screwdriver, remove the four 7mm screws from the silver panel.
- Remove the two 5mm screws.
- Remove the one 3 mm screw.
- Using the same screwdriver, remove the 3mm screw from the top of the camera.
- Pull the panel off and set it aside.

To reassemble your device, follow these instructions in reverse order.